

# PEARLS *of* PREVENTION

30

Thirty years of convening and collaborating to  
*Stop Cancer Before it Starts!*®



---

2016 Annual Report



Carolyn Aldigé

PRESIDENT AND FOUNDER

Jan Bresch

EXECUTIVE VICE PRESIDENT  
AND CHIEF OPERATING OFFICER

Karen Peterson, Ph.D.

VICE PRESIDENT OF PROGRAMS

Janet Hudson

MANAGING DIRECTOR, DEVELOPMENT

Lisa M. McGovern

EXECUTIVE DIRECTOR, CONGRESSIONAL FAMILIES  
CANCER PREVENTION PROGRAM

Amy Sokal

MANAGING DIRECTOR, FINANCE AND ADMINISTRATION

Lisa J. Berry

EDITOR

The Prevent Cancer Foundation® is a national nonprofit health foundation whose mission is saving lives across all populations through cancer prevention and early detection.



# TABLE OF CONTENTS

**2** THIRTY YEARS — PEARLS OF PREVENTION  
Letter from the President and Founder

**4** CELEBRATING OUR 30TH ANNIVERSARY  
Ringing of the Bell at New York Stock Exchange  
30th Anniversary Reception

**5** PEARLS OF GLOBAL IMPACT  
Technology Transfer Fellowships  
Rwanda grant

**6** PEARLS OF RESEARCH  
Research Awardees  
30 Years of Research

**11** PEARLS OF EDUCATION  
Think About the Link®  
Quantitative Imaging Workshop  
Breast Health Education  
Dialogue for Action®  
Congressional Families Cancer Prevention Program

**16** PEARLS OF OUTREACH  
Mammovan  
*¡Celebremos la Vida!*  
American Indian/Alaska Native Activities  
State Fairs

**18** PEARLS OF INFLUENCE  
Foundation in the News

**20** PEARLS OF ADVOCACY  
Advocating for Preventive Health

**21** PEARLS OF SUPPORT  
2016 Gala  
No-Shave November  
Awesome Games Done Quick  
5k Walk/Run and Health Fair  
Donor Spotlight

**25** BOARD OF DIRECTORS

**26** MEDICAL ADVISORY BOARD  
SCIENTIFIC REVIEW PANEL

**28** WAYS TO GIVE

**29** LEGACY MEMBERS AND LIFETIME FRIENDS  
FINANCIAL STATEMENT



Dear Friends,

On December 3, 2015, the Prevent Cancer Foundation® celebrated 30 years—our pearl anniversary. It is hard to believe that three decades have passed since I sat at my kitchen table and started the Foundation. To this day, we are the only U.S. nonprofit organization dedicated solely to cancer prevention and early detection.

A beautiful pearl is both admirable and valuable, created when an irritant becomes trapped in an oyster shell. Cancer is our irritant—to put it mildly—and from this burden we have created admirable, valuable pearls of prevention. In the following pages, you'll read more about the latest pearls we've produced in research, education, outreach, advocacy and more.

We have also ensured these pearls are at the forefront of every cancer conversation by continuing to fund scientific breakthroughs and insisting prevention and early detection be prioritized in the fight against cancer. With recent controversies surrounding screening, particularly around how frequently women should have mammograms, the Foundation has stood firm in our message that screening matters and *early detection saves lives*.

The numbers are clear. In 1985, 910,000 new cancer cases were diagnosed and 461,563 people died from these diseases. In 2015, 1.6 million new cancer cases were diagnosed and 595,690 people died from these diseases. Diagnoses are increasing because—as the cancer-prone population ages—more cancers are being detected, but mortality rates have slowed because these diseases are being found at earlier, more treatable stages.

This is good news, but we still have a lot of work to do. That's why we are continuing to support innovative, early-career scientists and educate the public on how to reduce cancer risk. From the Iowa state fair to the floor of the New York Stock Exchange, we are beating the drum for these critical public health messages.

And now, our reach is greater than ever before. Our Breast Health Education Guide has stretched across the country and around the world; it's been downloaded in 45 states and the District of Columbia, as well as more than 20 countries outside the U.S. The Foundation also began funding International Cancer Technology Transfer Fellowships, to rapidly transfer cancer prevention and early detection knowledge and technology to nations with limited access to vital, lifesaving equipment.

Our rallying cry was even heard by the White House, and Vice President Joe Biden's Cancer Moonshot Task Force named both prevention and early detection as top priorities. The Moonshot set a goal to achieve a decade's worth of progress in five years, and the Prevent Cancer Foundation® is dedicated to supporting the next administration and the Cancer Moonshot program to achieve this vision.





## CANCER DIAGNOSES AND DEATHS 1985 vs. 2015

**1985: 910,000 new cancer cases  
461,563 deaths**

**2015: 1.6 million new cancer cases  
595,690 deaths**

With the support of our donors, researchers, volunteers and advocates, the Foundation has been changing public perception about cancer. Cancer does not have to be something over which you have no control: there *are* steps you can take to reduce your risk and give yourself and your loved ones the best chance at a healthy life. You are your own best health advocate.

Thank you for being on our team as we create pearls of prevention and work together to *Stop Cancer Before It Starts!*®

Sincerely,

*Carolyn R. Aldigé*  
Carolyn R. Aldigé  
President and Founder





# CELEBRATING OUR 30TH ANNIVERSARY

## Ringing the Bell

In celebration of the Foundation's 30th Anniversary and the launch of the *Think About the Link*® campaign, the Prevent Cancer Foundation® rang the closing bell of the New York Stock Exchange (NYSE) on February 5, 2016.

Foundation leaders, board members, corporate supporters and two individuals who had lost a family member to cancer shared the honor of participating in the ceremony—a tribute to the impact of the Foundation's 30 years of saving lives through cancer prevention and early detection.

The Prevent Cancer Foundation® is grateful to the NYSE and many of its members, whose support makes possible several Foundation programs.

## Celebrating 30 Years of Cancer Prevention

On December 3, 1985, Carolyn "Bo" Aldigé founded the Prevent Cancer Foundation®. This year, the Foundation celebrated 30 years of saving lives across all populations through cancer prevention and early detection.

In recognition of this milestone, the Foundation hosted a reception to honor Congressional Leaders in Cancer Prevention for their dedicated service and commitment to our mission.

"Thirty years ago, prevention was not a part of the mainstream conversation," said Rep. Debbie Dingell, who was one of the congressional leaders honored. "The Prevent Cancer Foundation was at the forefront of responding to a critical public health need—and three decades later they continue to beat the drum and make significant contributions to cancer prevention and early detection."

Left to right: Rep. Debbie Dingell and Carolyn Aldigé







# PEARLS OF GLOBAL IMPACT

## International Technology Transfer Fellowships

In 2016, the Foundation began to fund **International Cancer Technology Transfer Fellowships**, focusing on rapid transfer of knowledge and technology in cancer prevention and early detection. The program was initiated through a partnership with the Union for International Cancer Control (UICC), an international nonprofit organization. The Technology Transfer Fellowships allow health care professionals in poor nations to train on vital, lifesaving equipment for the early detection and treatment of cancer at top research and cancer institutes around the world.

The first fellow supported by the Foundation was Ranjan Duggal, M.D., who was trained at Johns Hopkins University in Baltimore, Maryland. There, he was able to implement his project, *Immunohistochemical Approach in Poorly Differentiated Genitourinary Malignancies Where Question of Prostatic Origin Is an Issue*. Dr. Duggal is on staff at Medanta The Medicity, a well-known hospital in Delhi, India.

According to Dr. Duggal, implementing the tests with newer, more-specific markers of prostate cancer will help his lab more correctly identify the origin of cancer in 25-30 percent of the poorly differentiated tumor samples, thus improving early diagnosis and initiation of appropriate treatment. Dr. Duggal will then share his knowledge and training with other hospitals in the region.

## Detecting Cancer in Rwanda

These days, you can use your cell phone to send emails, order takeout or do just about anything. Now **Philip Castle, Ph.D.**, is testing an innovative new use for your phone—detecting cervical cancer.

Cervical cancer is a disease linked to poverty. In fact, 76 percent of new cervical cancer cases and 88 percent of deaths across the globe occur in developing countries with minimal resources to vaccinate, screen or treat women for this deadly disease.

This year, the Prevent Cancer Foundation® awarded Dr. Castle a grant to evaluate the ability to detect cervical cancer early with new technology built on a mobile phone base. This would have the potential to make cervical cancer screening more available in low-resource countries where cervical cancer rates are still high. This project is part of a larger study of cervical cancer in HIV-infected women in Rwanda.



Funding for this grant was made possible by the 6th annual **Awesome Games Done Quick (AGDQ)** speedrunning marathon.



# PEARLS OF RESEARCH

## 2015 Partnership Award

**Grantee:** Valsamo Anagnostou, M.D., Ph.D.

**Institution:** Johns Hopkins University, Baltimore, MD

**Partnership Award:** IASLC/Prevent Cancer Foundation®/Richard C. Devereaux

**What she will study:** The prognosis of non-small cell lung cancer (NSCLC) largely depends on tumor stage, and low overall survival rates are attributed to late diagnosis, when the tumor is either unresectable (cannot be completely removed by surgery) or metastatic.



The relapse rate even in early-stage resectable lung cancer patients is in the range of 35-50 percent within 5 years after potentially curative treatment. Radiographic surveillance is currently the gold standard for detection of recurrence, but it is limited in its efficacy for predicting outcomes in early-stage NSCLC patients.

It is critical to develop sensitive and highly-specific molecular markers that will improve the detection of recurrence in early-stage NSCLC patients and complement the predictive value of radiographic imaging. Dr. Anagnostou hypothesizes that there are tumor subsets in early-stage NSCLC with distinct somatic mutations, which reflect differences in clinical outcome. She proposes a comprehensive genomic analysis of both the primary tumor, as well as circulating cell-free DNA, in order to identify genomic alterations associated with disease recurrence in early-stage NSCLC patients.



## 2015 AGDQ Awardee

**Grantee:** Dorraya El-Ashry, Ph.D.

**Institution:** University of Miami, Miami, FL

**Named Award:** Awesome Games Done Quick Grant

**What she will study:** In recent years, earlier detection of breast cancer has dramatically improved treatment success and clinical outcomes for breast cancer patients. Nevertheless, the lion's share of deaths associated with breast cancer are due to disease metastasis, i.e., the spreading of breast cancer to organ sites other than the breast, which can occur years or decades after initial therapy.

Cancer Associated Fibroblasts (CAFs), non-cancer cells that make up a large portion of a breast tumor, produce key factors involved in breast cancer initiation to progression, drug-resistance and metastasis, and, critically, may be a target for therapeutic intervention in breast cancer of all stages. Dr. El-Ashry hypothesizes that CAFs are biomarkers indicative of breast cancer metastasis, and may be key for early detection of disease progression and metastasis.



## 2015 Research Awardees

**Grantee: Andrew Bostom, M.D.**

**Institution: Rhode Island Hospital, Providence, RI**

**What he will study:** “Non-melanoma” skin cancers and pre-cancerous growths (actinic keratosis or “AKs”) develop at high rates in kidney transplant patients. When they do develop in these patients, they tend to be aggressive and require frequent medical procedures, often surgery, for their removal. If not removed, the pre-cancers can develop into skin cancers, and the skin cancers may spread and even cause death.

It would be an important medical advance to reduce the occurrence and complications of these skin cancers and pre-cancers in kidney transplant patients with a safe, effective, well-tolerated treatment taken by mouth. Dr. Bostom and his team are testing oral nicotinamide (NAM)—a B-vitamin compound—to see if NAM treatment reduces the numbers of pre-cancerous growths and “non-melanoma” skin cancers in these patients.



**Grantee: Katherine Cook, Ph.D.**

**Institution: Wake Forest University Health Sciences, Winston Salem, NC**

**Named Award: The Living in Pink/Prevent Cancer Partnership Award**

**What she will study:** Several studies have shown a strong link between obesity and breast cancer; an estimated three out of 10 breast cancers may have been prevented if the women were not overweight.

Dr. Cook’s preliminary data show that, compared to lean mice, obese mice are more likely to develop breast cancer and to have a worse response rate to endocrine-targeted therapies.

Dr. Cook hypothesizes that elevated UPR and autophagy induction in mammary glands of obese mice promote tumor formation and impair responsiveness to anti-estrogen therapy. Targeting these pathways may prevent obesity-mediated primary breast cancer and prevent secondary breast cancer recurrence, thus reducing overall breast cancer mortality.



**“This grant will enable our group to start investigating the role of dietary fat contribution to breast cancer risk and serve as a basis for future grant proposals in order to continue our research on this important topic.”**

## 2015 Research Awardees

**Fellowship Awardee: Nicole M. King, Ph.D.**

**Institution: Wayne State University, Detroit, MI**

**What she will study:** Currently, there is no effective screening test for ovarian cancer, and development of specific and sensitive biomarkers for ovarian cancer remains a challenge.

A preliminary study using a small number of patients in Dr. King's lab has shown that a combination of serum myeloperoxidase (MPO) and free iron levels can differentiate between early (stage I) ovarian cancer and healthy controls and between early- and late-stage ovarian cancer.



Dr. King and her team will further test whether serum MPO and free iron can serve as biomarkers for early detection of ovarian cancer alone or in combination with commercially available tests for ovarian cancer. The outcome of this project is significant, because the development of a sensitive and specific method for early detection is widely recognized as a high priority to improve the diagnosis and treatment of this deadly disease.

**"I believe that we have a very novel finding that could lead to a more effective biomarker for the early detection of ovarian cancer. The funding [from the Prevent Cancer Foundation] will support the research needed to improve upon current biomarkers, which lack the specificity and sensitivity to clearly detect ovarian cancer at an early, more treatable stage."**

**Fellowship Awardee: Brittany Lasseigne, Ph.D.**

**Institution: HudsonAlpha Institute for Biotechnology, Huntsville, AL**

**Named Award: William J. Maier III Fellowship in Cancer Prevention**

**What she will study:** When tumors are confined to the kidney, they can be surgically removed, and five-year survival rates are high. However, early symptoms are rare, later symptoms are not easily recognizable and there are no clinical biomarkers for early detection. Once the cancer has spread outside the kidney, kidney cancer becomes harder to treat and much deadlier.

Dr. Lasseigne has identified differences in DNA between kidney tumors and normal tissue that can easily distinguish them, even in early-stage patients. These tissue biomarkers are strong candidates for development of a clinical diagnostic test.

Their preliminary data suggest detection of these biomarkers is possible in patient urine, which provides an avenue for the development of a DNA-based diagnostic, non-invasive test for the early detection of kidney cancer.



**"As a postdoctoral fellow, funding from the Prevent Cancer Foundation will help support my continued training and career development in cancer genomics. I am both honored and excited by this award."**

**Fellowship Awardee: Ranjan Preet, Ph.D.**

**Institution: University of Kansas Medical Center Research Institute, Inc., Kansas City, KS**

**Named Award: Lilly USA Research Award in Cancer Prevention and Early Detection**

**What she will study:** A major factor contributing to colorectal tumor progression is overexpression of oncogenes, inflammatory mediators and angiogenic growth factors.

Exosomes are small secreted vesicles that contain biological materials such as RNA and proteins that can deliver this cargo to target cells. Tumor cells secrete higher amounts of exosomes that contain oncogenic cargo, and colorectal cancer patients have higher levels of circulating blood exosomes. This allows for their potential use as a disease marker.

The goals of this study are to characterize a novel protein present in colorectal cancer exosomes and to determine if it can serve as a non-invasive biomarker for colon cancer screening. The study will characterize a novel protein that is selectively secreted from colorectal cancer cells, and Dr. Preet aims to explore this as a potential biomarker for development of a non-invasive blood-based detection method for colorectal cancer.



**“I believe that prevention of biologically aggressive early lesions represents the best hope for preventing death from biologically aggressive breast cancer.”**

**Grantee: Victoria Seewaldt, M.D.**

**Institution: Beckman Research Institute of the City of Hope, Duarte, CA**

**Named Award: The Green Flash Brewing Company Grant in Cancer Prevention and Early Detection**

**What she will study:** Everyone knows a woman who had a normal mammogram or biopsy, and despite her “normal” results, went on to develop an aggressive cancer. Part of the problem is that we know very little about how aggressive breast cancers develop.

The majority of breast biopsies are evaluated by appearance (morphology) and not by biology; however, there is evidence that biology can sometimes be even more important than morphology. In this study, Dr. Seewaldt aims to test whether some breast biopsies may look normal but have activation aggressive biology that, if left unchecked, promotes rapid progression to triple-negative breast cancers (TNBC). Dr. Seewaldt’s hypothesis is that activation of this network signaling predicts loss of nuclear expression of BRCA1 (loss of function) and can be used to improve early detection of TNBC.



# 30

## Thirty Years of Research

For the past three decades, the Prevent Cancer Foundation® has tirelessly advocated for research on cancer prevention and early detection. When the Foundation was launched in 1985, cancer prevention was not central to the conversation— most cancer organizations at the time were focused on treatment, seeking the “magic bullet.”

Venturing into an area that was being overlooked by most, the Prevent Cancer Foundation® began funding novel and potentially groundbreaking science in cancer prevention and early detection. This includes studies in the areas of:

- tobacco cessation and other behavioral health and behavioral change;
- health equity, also known as “social determinants of cancer”;
- chemoprevention, both naturally occurring compounds and pharmaceutical agents;
- dietary components that can cause or protect against cancer;
- dietary interventions to reduce obesity (second only to tobacco use as a cause of cancer) and the links between inflammation and cancer;
- advanced technologies for early detection;
- biomarkers of early cancer;
- vaccines that prevent cancer and genetic links to cancer;
- environmental toxins that cause cancer; and
- effective ways to communicate cancer prevention messaging to motivate people to take action.

In the preceding pages, you got a peek at the exciting projects we supported during our last fiscal year. We are proud of the innovative research we have funded in the past 30 years, and look forward to new developments and future breakthroughs.



# PEARLS OF EDUCATION

## Think About the Link®

In January, the Prevent Cancer Foundation® launched *Think About the Link®*, a national, multi-year campaign to educate the public on the link between certain viruses and cancer. This campaign focuses on human papillomavirus (HPV), hepatitis B and hepatitis C, which are directly linked to at least seven types of cancer. Through *Think About the Link®*, the Foundation aims to increase screening rates for the viruses, increase vaccination rates for HPV and hepatitis B and raise awareness of available treatment options for hepatitis B and C.

At any given time, one in every four people in the U.S. is infected with at least one strain of HPV, a common virus that infects 14 million Americans each year. HPV is responsible for more than 90 percent of anal and cervical cancers, about 70 percent of vaginal, vulvar and oropharyngeal (back of the throat) cancers and more than 60 percent of penile cancers. Hepatitis B and C are two of the leading causes of liver cancer, and in the next 10 years, approximately 150,000 people in the U.S. will die from liver cancer and end-stage liver disease associated with these viruses.

Prior to the campaign's launch, the Foundation surveyed more than 650 health care professionals and 1,000 adults in the U.S. Survey results revealed a significant lack of awareness about the link between viruses and cancer, demonstrating the need for greater education and communication. Key findings include:

- 57 percent of adults are unaware the HPV vaccine can significantly reduce the risk of certain cancers.
- 76 percent of adults are unaware the hepatitis B vaccine can lower the risk of liver cancer.
- 73 percent of adults are unaware treating hepatitis C can reduce the risk of liver cancer.

Stay tuned for the next phase of the campaign in 2017, where we will focus on populations most affected by these viruses: African-American, Asian-American and Latino.



*Think About the Link® traveled to Harlem, New York to provide screenings and educate the community on viruses and cancer.*

# PEARLS OF EDUCATION

## Evolution of the Quantitative Imaging Workshop

Challenges made, vision realized, lives saved.

The evolution of the Quantitative Imaging Workshop stands as a shining example of the Foundation's ability to move the needle on a nationwide scale by convening the right people and facilitating crucial collaborations to change outcomes for people with lung cancer and other tobacco-induced diseases.

Thirteen years ago, the Prevent Cancer Foundation® brought together oncologists, surgeons, radiologists, measurement scientists, computer scientists and photonics experts to explore how to use the fast-improving capability of spiral CT scans to improve outcomes for lung cancer. The two most promising new possibilities were to better find early curable lung cancer with screening and to use the increasing resolution of spiral CT to better assess response to new treatments for early lung cancer. Since then, Workshop participants have contributed to the development of an NCI-sponsored lung imaging database, and have collaborated with industry experts and the Optical Society of America to develop open-source quantitation tools.

The Workshop format has supported several types of software evaluations (known in the field as “bake-offs”) to identify the most reproducibly precise way to measure objects of interest using spiral CT. Most recently, the Workshop has been a catalyst in advancing cross-disciplinary quantitative imaging analysis of CT scans as a transformational tool for the integrated early detection of tobacco-induced thoracic diseases, including COPD and cardiovascular disease.

The Foundation and Quantitative Imaging Workshop participants have also successfully collaborated with other organizations to:

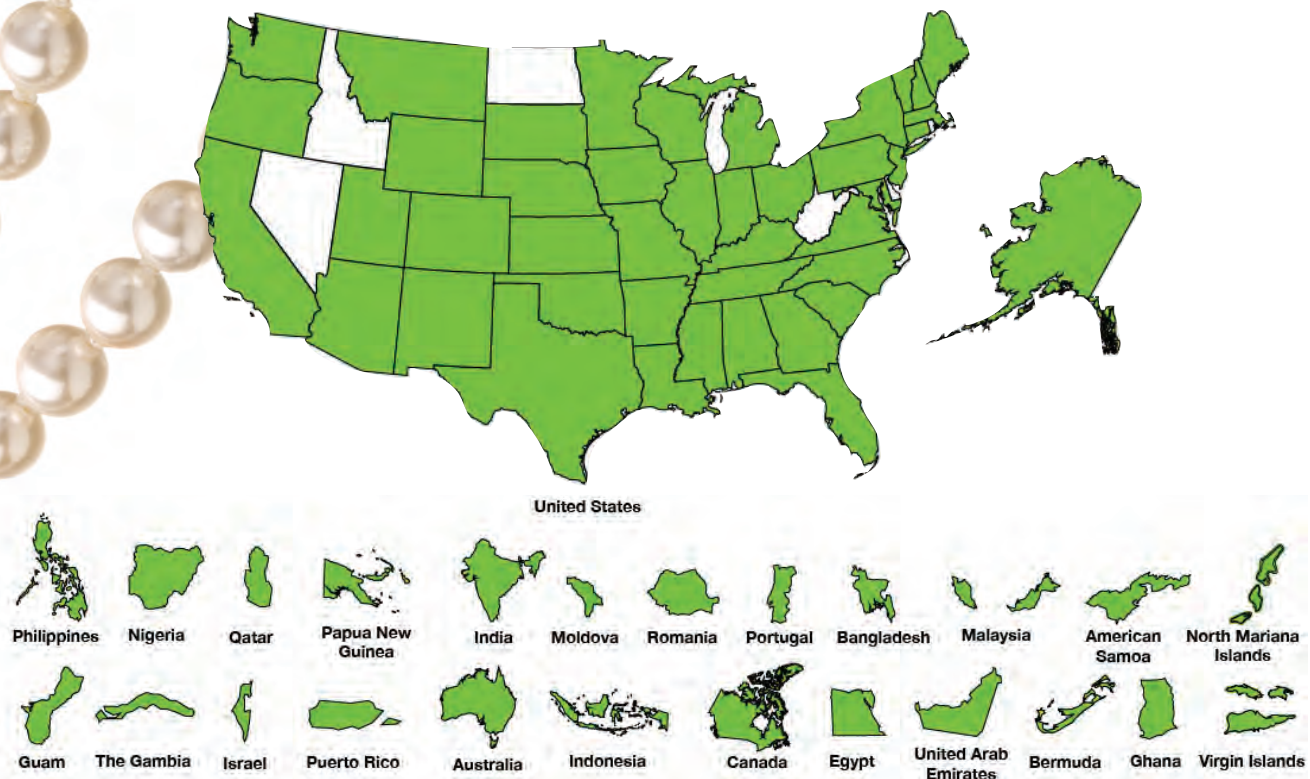
- Petition the Centers for Medicare and Medicaid Services to reimburse the cost of lung cancer screening to the high-risk populations indentified by the U.S. Preventive Services Task Force (USPSTF).
- Consistently advocate for the routine integration of tobacco cessation into all lung cancer screening efforts, to emphasize the complementary value of the two preventive approaches.
- Identify an opportunity for harnessing large amounts of data as a resource for examining the quality of CT scans and producing usable measurements with existing tools.

In June 2016, the Workshop and its partners issued the first ever crowd-sourced challenge, asking imaging facilities to submit their CT scanning protocols to determine the best CT settings and imaging techniques for screening sites to obtain accurate early lung cancer imaging. This is another Workshop milestone, as it provides a model for building a national image quality infrastructure for clinical applications of quantitative imaging. This workshop continues to bring innovation to integrate quantitative imaging into robust approaches to significantly reduce the lethal impact of lung cancer.





## BREAST HEALTH EDUCATION GUIDE DOWNLOADS



## Breast Health Education

The Prevent Cancer Foundation's *Breast Health Education for Young Women: Facilitator's Guide* is designed to increase young women's skills and knowledge about breast health. This user-friendly education tool provides current breast cancer screening and breast self-awareness guidelines and has been utilized by communities around the world to teach young women about breast health and breast cancer.

The Guide was revised in 2016 to include new information, such as recent research that shows eating fruits and vegetables in adolescence may lower your risk of cancer later on.

Guides have been downloaded and shared in 45 states, the District of Columbia and Puerto Rico, as well as Australia, Bangladesh, Bermuda, Canada, Egypt, Ghana, Indonesia, Malaysia, Moldova, Nigeria, Papua New Guinea, the Philippines, Portugal, Qatar, Romania and the United Arab Emirates.

Translation and cultural adaptation of the *Guide* for Spanish-language groups was also completed in 2016 and will be shared with Spanish-speaking communities in the coming year.



*“I’m . . . reading your *Breast Health Education for Young Women* guide. It’s incredibly impressive.”*

— Helen, Australia

# *Dialogue for Action*®

The Prevent Cancer Foundation® held its 18th annual *Dialogue for Action*®, April 6-8, 2016, in Baltimore, Maryland. In past years, the focus of this annual conference has been on colorectal cancer screening. Since 2013, *Dialogue for Action*® has expanded to include the mandated guidelines-driven cancer screenings (colorectal, cervical, breast and now lung cancer screenings) and cover issues related to other cancer screenings (e.g., prostate, oral and skin). All participants are encouraged to take the dialogue back to their communities and workplaces to promote appropriate screening.

Topics at the 2016 *Dialogue* included big data; key legislation; prevention initiatives to reduce health disparities; the Vice President's Cancer Moonshot initiative; updates on screening guidelines; patient navigation; and a discussion on food and cancer prevention.



Dr. Kristi Funk (left) gave the opening keynote address on improving health equity and breast cancer incidence and death rates. Dr. Funk runs the Pink Lotus Breast Center in California where she treats the rich and famous, as well as uninsured women in need of education, screening and treatment.

Dr. Walter Willett (right) served as the closing keynote speaker. He is a renowned physician and nutrition researcher from the Harvard T.H. Chan School of Public Health. He discussed the importance of eating more fruits and vegetables while limiting red meats, and how food impacts the development of cancer.

We are proud to serve a diverse group of stakeholders and provide an opportunity to learn, discuss and collaborate to equip participants with concrete tools and effective strategies for use in both clinical and public health settings.







Left to right: Lisa McGovern, Ashleigh Black, Franki Roberts, Sandra Lee, Siddhartha Mukherjee, Jennifer Griffin, Sharon Rockefeller and Kasey Crowley

## Congressional Families Cancer Prevention Program

The Congressional Families Cancer Prevention Program celebrated its 25th anniversary year and capped it off with its annual *Action for Cancer Awareness Awards Luncheon*. Honorees were Senate spouse Franki Roberts; Dr. Siddhartha Mukherjee, author of “The Emperor of All Maladies;” Sharon Rockefeller, whose efforts resulted in a PBS series based on Mukherjee’s book; and lifestyle guru Sandra Lee, for their outstanding contributions in creating awareness of cancer prevention and early detection. More than 50 congressional spouses and 20 members of the House and Senate attended, along with members of the diplomatic corps and leaders in the cancer community.

Throughout the year, the Program hosted educational events on Capitol Hill. This included a briefing on “Aging Audaciously,” which began with welcoming remarks by Congresswoman Debbie Dingell, co-founder of the Congressional Cancer Prevention Caucus. The discussion focused on preventing cancer and other diseases of aging. Panelists Dr. Lisa Nelson and Dr. Eugenia Victoria Ellis presented to the group and answered questions.

The value of mindfulness, meditation and their role in disease prevention were the subject of another briefing the Program held in the U.S. Capitol. Congressman Tim Ryan, who wrote a book on this topic, discussed with spouses how groups in their home states could benefit from practices that reduce stress. Expert Patrick Coffey also presented. Meditation is often incorporated into cancer treatment plans and is a useful tool to help prevent cancer by improving overall health.

The Program continues its national outreach by offering op-eds and other communication tools to its more than 200 members, enabling them to use their unique platforms to raise awareness and reduce cancer risk.





# PEARLS OF OUTREACH

## Mammovan

Early detection of breast cancer is critical for successful treatment outcomes, but not every woman has the means or access to get yearly mammograms. That's why George Washington University Breast Care Center, supported by the Prevent Cancer Foundation®, created a mobile mammography unit, also known as the Mammovan. The Mammovan provides free mammograms to uninsured and underinsured women in the District of Columbia, Maryland and Northern Virginia who otherwise might not have access to screenings.

The Prevent Cancer Foundation® has been supporting the Mammovan for more than 20 years, and has provided nearly \$4 million in funding for the Mammovan since 1995. To date, more than 43,000 mammograms have been performed in the mobile mammography unit, and 138 breast cancer cases have been diagnosed. Every woman with abnormal results receives follow-up diagnosis and treatment, regardless of her ability to pay.

The Prevent Cancer Foundation® is proud of our continued support of the George Washington University Mammovan and grateful for all your contributions that make this valuable program possible.

**"The wonderful work done by the Mammovan team would not be possible without the Prevent Cancer Foundation's long-standing support!"**

**—Bathsheba Philpott, CFRE, Director, Institutional Giving**

**The George Washington University, School of Medicine & Health Sciences**



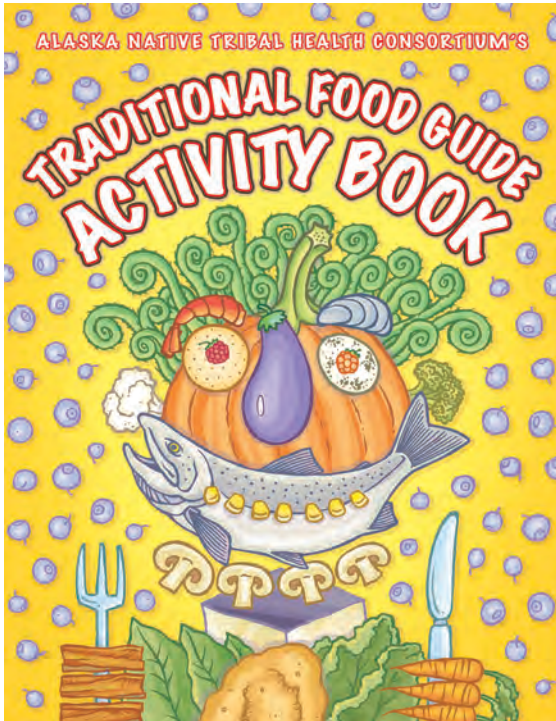
## ¡Celebremos la Vida!

For the past 22 years, *¡Celebremos la Vida!* (Let's Celebrate Life!) has been ensuring Latinas receive free/low-cost comprehensive breast and cervical cancer screenings and education in a setting that is culturally appropriate and nurturing.

Our bilingual, bicultural patient navigators have helped participants through more 48,000 screening and follow-up services and educational interactions.

The *Campeonas contra el cancer de seno* (Champions against Breast Cancer) project addresses health disparities in breast cancer screening rates for Latinas. The program offers training for Latinas to share their own breast cancer screening experiences with friends and family members to encourage them to get screened.

Partnering with faith-based and medical institutions, the Foundation ensures that any women screened through *¡Celebremos!* will receive all needed diagnostic services and follow-up care, the hallmarks of a successful screening program.



## American Indian/Alaska Native Activities

The Prevent Cancer Foundation® has been making a difference in American Indian and Alaska Native (AI/AN) communities since 2007 through grants that support powwows, traditional food guides, colorectal cancer screening, community grants and numerous other cancer prevention projects. Our grants have enabled groups across Indian Country to implement cancer initiatives tailored to their individual communities and cultural needs.

Compared to other Americans, American Indians and Alaska Natives generally have disproportionately high cancer rates and low cancer screening rates. This means many American Indians and Alaska Natives are at increased risk of cancer and cancer may be diagnosed at later stages.

The Foundation's support and involvement with the AI/AN community have included developing and distributing a culturally-tailored *Guide to Preventable Cancers for American Indians and Alaska Natives: Steps to Wellness for You and Your Family*, as well as hosting sessions at the annual *Dialogue for Action*® conference for sharing cancer screening and educational resources among groups serving American Indian communities. Many representatives from the AI/AN community come to the *Dialogue* each year to identify ways they can work collectively to combat cancer in Indian Country.

“This [screening] is the only reason I come to the fair.”

## State Fair Health Awareness and Screening Booths

Since 1993, Prevent Cancer Foundation® has been reaching out to rural populations with messages of cancer prevention and screening at annual state fairs. By partnering with local clinics and members of Congress who share our interest in cancer education and screening, the Foundation brings cancer screenings to the people and encourages healthy behaviors in thousands of state fair visitors every year.

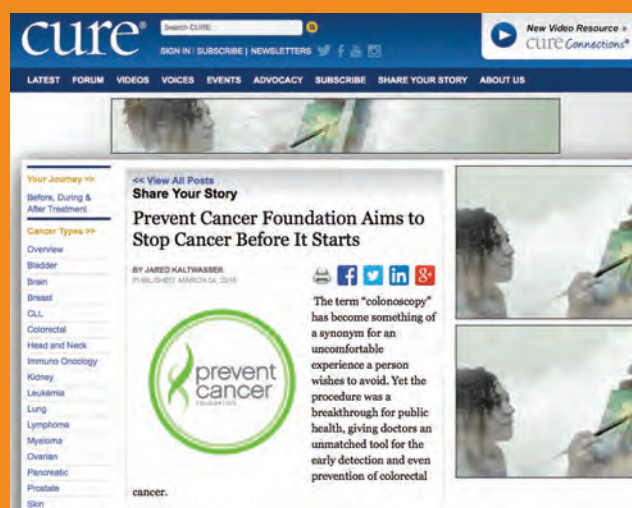
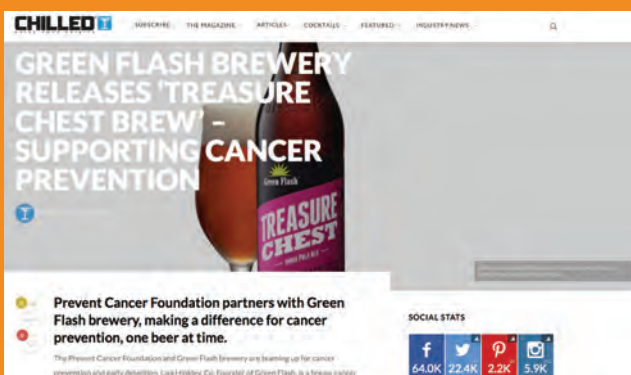
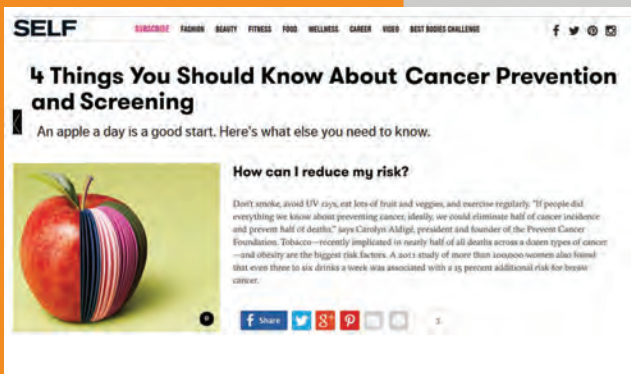
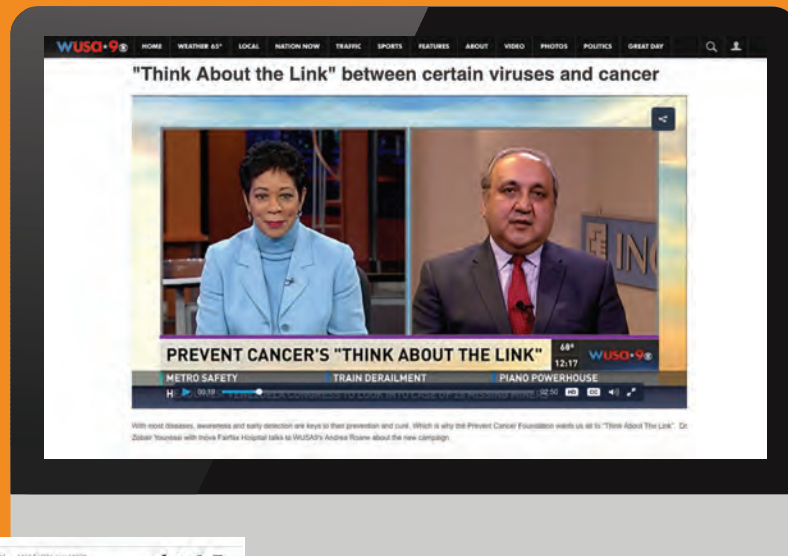
The Foundation has provided cancer screening and education services at state fairs in Kansas, Idaho, Iowa, Montana, Nebraska, North Dakota, Ohio and South Dakota.



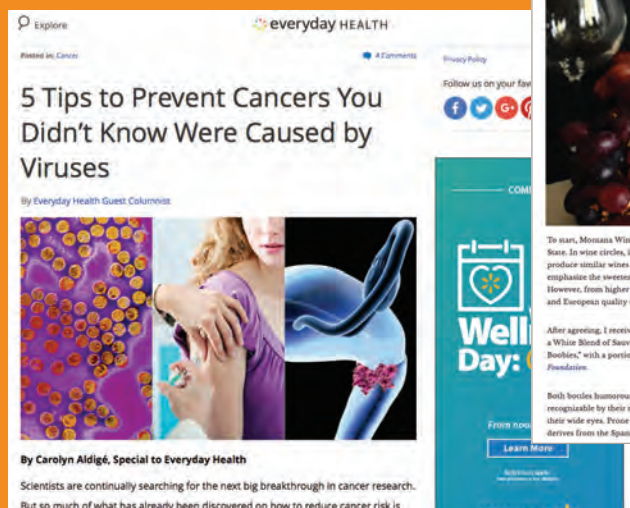
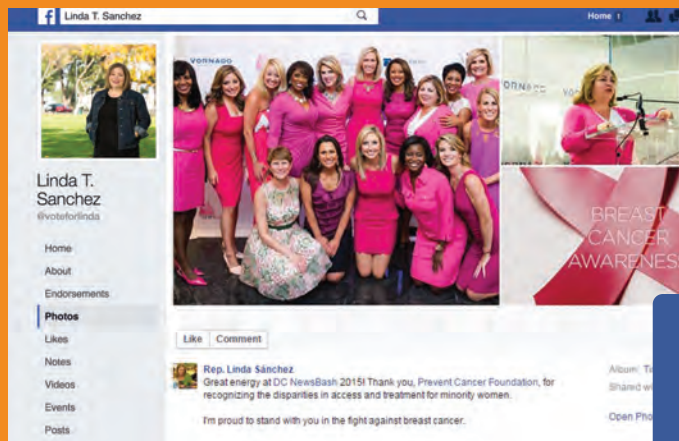
“My grandfather died from lung cancer, and to see him suffer through it makes me want to always [be] sure I am checked to prevent cancer from either happening or spreading so I can be around longer than cancer allow[ed] him [to be].”

— Iowa State Fair visitor





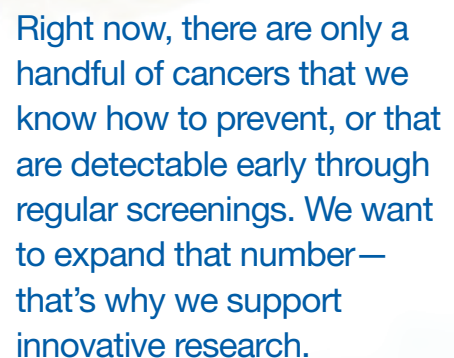








We will continue our work in advocating for new preventive measures and ensuring everyone has access to and coverage for the cancer screenings they need. Make your voice heard on these issues and more by joining our growing advocacy network, and help us make a difference in preventive health.





# PEARLS OF SUPPORT

## 22nd Annual Spring Gala

The 2016 Annual Spring Gala, *La Vie En Rose*, was held under the honorary patronage of His Excellency, the Ambassador of France, Gérard Araud. The Gala attracted nearly 1,000 people and raised more than \$1.5 million to support cancer research fellowships and community outreach programs.

In his remarks, Ambassador Araud highlighted the Foundation's role in making cancer prevention a priority. "Tonight we recommit ourselves to fighting cancer and going further in the fight against cancer," he said. "The Prevent Cancer Foundation® plays a very specific role in the cancer fight...what it has achieved is transformative."

The evening featured the 2016 Cancer Champion awards, which were presented to House Energy and Commerce Committee Chairman Fred Upton and Representative Diana DeGette for their work on the 21st Century Cures Act. The late Congressman Mike Oxley, who died of lung cancer on New Year's Day 2016, was honored during the "Lighting the Way to Prevention" pledge drive with a heartfelt tribute from his son, Elvis.

The Gala is widely recognized as one of the signature charity events of the year and was covered by *Bisnow*, *Hollywood on the Potomac*, *Georgetown Dish* and *Washington Life*. The Gala décor was personally designed by celebrity party planner David Tutera, who is a member of the Foundation's Board and was in attendance at the event. Tutera's filming of a Prevent Cancer PSA was featured in an episode of David Tutera's "CELEBrations" on WE TV last year.

Next year's Gala will salute Italy and will be held on March 10, 2017. It will honor His Excellency, the Ambassador of Italy, Armando Varricchio, and Mrs. Varricchio.



His Excellency, the Ambassador of France, Gérard Araud



Board members David Tutera and the Hon. Vic Fazio surround Carolyn "Bo Aldigé"





# PEARLS OF SUPPORT

## No-Shave November

The No-Shave November movement was started in 2009 by Matthew Hill's eight children after they lost their father to colon cancer in November 2007.

Participants ditch their razors for the month of November and donate the cost of grooming to the cause—many also solicit donations from family and friends. Even the men from NBC's "Today" show got in on the action, and Foundation staff and supporters were on set to cheer them on as they shaved their beards at the end of the month.

Thanks to everyone who #LETITGROW, No-Shave November donated nearly \$400,000 to the Prevent Cancer Foundation®.



## Awesome Games Done Quick

Awesome Games Done Quick is an annual live-streamed video game marathon organized in support of the Prevent Cancer Foundation®. Hundreds of all-star gamers from around the world meet in Virginia to "speedrun"—or play as fast as possible—their favorite video games. Gamers all around the globe tune in online and donate to the Foundation.

Thanks to these incredible donors, the 2016 Awesome Games Done Quick marathon raised \$1.2 million. These funds are being used to support research grants, a lung cancer fellowship, six International Cancer Technology Transfer fellowships and more.



## A Rainy Day is No Match for the Prevent Cancer 5K

Planning for the Prevent Cancer Foundation's 7th annual 5k Walk/Run had been going on for months; but when the big day arrived, Hurricane Joaquin had different plans. Despite the weather, hundreds braved the rain and cold to walk or run along the Capitol Riverfront and raise \$200,000 for prevention and early detection.

After drying off, participants explored the Health Fair and got skin checks, oral cancer screenings, nutrition counseling, flu shots and more. The Prevent Cancer 5k provided the perfect opportunity to start building healthy habits to *Stop Cancer Before It Starts!*®



## Donor Spotlight:

### Maya Warren

Nine-year-old Maya Warren proved that you don't have to be big to make a big impact.

Maya proved that when she took on the Typhoon Texas Kids Triathlon on May 23 in memory of her dad. Months earlier, her father died from injuries sustained in a motorcycle accident, but while he was in the hospital, doctors learned he was also suffering from cancer.

"I don't want anyone else to not know they have cancer," Maya said when she chose to raise money for the Prevent Cancer Foundation®.

Triathlon participants could choose to take part in the "Onurmark Giving Challenge," which allowed each Typhoon Texas Kid to pick a charity and fundraise. Maya worked hard to compete in memory of her father. She raised \$1,300 for the Foundation and won first place in the giving challenge.

Maya is one of our youngest donors—and one of our most inspiring. Her work will help fund groundbreaking research and lifesaving education and screening programs so more people can prevent cancer or detect it early, when it is most treatable.

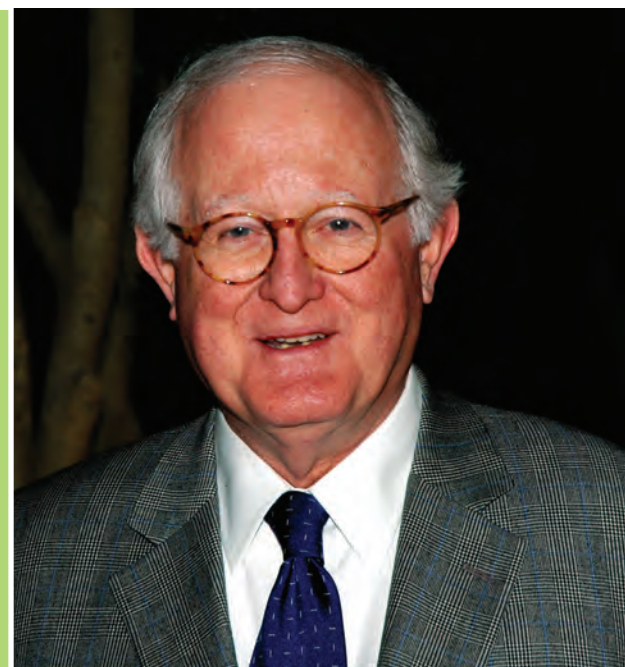
As Maya says, "Together we can change a small part of our world!"

## Alan Dye

"The Prevent Cancer Foundation® has made a solid impact on cancer prevention. My law firm represents hundreds of charities, and many of them have been start-ups. It is the rare start-up charity with success like [the Foundation's], and I think a lot of that success has to do with the cooperative attitude adopted from the outset.

When we first started out, many of the other charities in the cancer space viewed us as competitors for donor dollars. As time went on, most of them recognized that Prevent Cancer Foundation was not interested in competing, but in acting cooperatively to beat these diseases. That is largely due to Bo Aldigé's leadership, and it has been a pleasure to be part of it."

—Alan Dye, long-time donor and founding board member





# PEARLS OF SUPPORT

“We are impressed by the Foundation’s spending more on programs than other organizations.”

– Alan Cerwick,  
President,  
VP Racing Fuels



VP Racing Fuel auctions off a pink fuel container autographed by National Hot Rod Association drivers Erica Enders, Courtney Force and Alexis DeJoria. They are pictured here with VP Racing Fuel's Freddie Turza.

## Raising funds with the motorsport community

From students in the District of Columbia to poker players in New York, the Prevent Cancer Foundation® has worked with many diverse groups to raise funds for cancer prevention and early detection. One community we had never connected with, however, is the motorsport and racing community. That all changed in 2012 when the Foundation was contacted by VP Racing Fuel, which sells race fuel for all motorsports on land, sea and air.

Motorsports rank as one of the most popular sports in America, and, with fans across the country, this group is large, enthusiastic and growing. But the field is still largely dominated by men, so in an effort to help diversify the sport, VP Racing Fuel decided to sell pink fuel containers to help combat breast cancer.

Originally, the fundraiser was set to run only during the month of October (National Breast Cancer Awareness Month). But the fundraiser proved to be so popular, VP Racing Fuel decided to keep it going year-round. They donate a percentage of all profits to the Prevent Cancer Foundation®—and double the percentage during October.

Since the program’s inception, VP Racing Fuel has donated nearly \$38,000 to the Foundation. When VP Racing first started selling the pink fuel containers, “We didn’t know what to expect,” said Steve Scheidker, Director of Marketing at VP Racing Fuel. “But if I’ve learned anything in my time in this industry, it’s that those involved in racing having a magnanimous spirit.” We couldn’t agree more.



# BOARD OF DIRECTORS



Carolyn R. Aldigé,  
President and Founder



Scott McIntyre  
Chairman



Gary Lytle  
Vice-Chairman



Joann Piccolo  
Vice-Chairman



James Mulshine, M.D.  
Vice-Chairman,  
Scientific Director



Kathryn West, RN  
Secretary

## Sustaining Directors

Betty Alewine  
Michael F. Brewer  
Ron Doornink  
Karen D. Fuller  
Gordon (Don) Hutchins, Jr.  
Joel Jankowsky  
Marcelle Leahy  
Jon Mittelhauser  
Jean Perin  
Andrea Roane  
David Tuter  
Margaret Vanderhye  
Virginia A. Weil



Brock Landry  
Treasurer



Katherine Kennedy  
Allen



Frantz Alphonse



Ron Christie



Vic Fazio



Drew Figdor



Jeremy Hardy  
FitzGerald



Kimberley Fritts



Joyce H. Gates

## Emeritus Directors

David S. Alberts, M.D.  
Catherine P. Bennett  
Margaret Bush  
Marcia Myers Carlucci  
Elmer E. Huerta, M.D., MPH  
Alexine Clement Jackson

## Founding Directors

Alan P. Dye  
The Honorable  
Harold M. Keshishian\*

\*deceased



Lilibet Hagel



Pawan Singh



Sharon Stark



George Swygert

“Early detection and prevention are so important. That’s what sets the Prevent Cancer Foundation apart from all the other cancer charities—and it’s why in 1988 I began donating to the Prevent Cancer Foundation. I know what it’s like to face a cancer diagnosis—and how painful it is to watch someone you love die of the disease.”

– Donor since 1988



# MEDICAL ADVISORY BOARD

**Chairman, David S. Alberts, M.D.**  
Director Emeritus, University of Arizona Cancer Center

**Jasjit S. Ahluwalia, M.D., MPH, MS**  
Dean, Rutgers School of Public Health

**Bart Barlogie, M.D., Ph.D**  
Professor of Medicine, Hematology and Medical Oncology, Ichan School of Medicine Mt. Sinai

**Rachel F. Brem, M.D.**  
Director, Breast Imaging & Interventional Center  
Professor of Radiology,  
George Washington University Medical Center

**Paul A. Bunn Jr., M.D.**  
Professor, James Dudley Chair in Cancer Research  
University of Colorado Denver School of Medicine

**Donald S. Coffey, Ph.D.**  
Professor, Urology, Oncology, Pathology,  
Pharmacology  
Johns Hopkins University School of Medicine

**Kenneth H. Cowan, M.D., Ph.D.**  
Director, Fred and Pamela Buffet Cancer Center  
University of Nebraska Medical Center

**Riccardo Dalla-Favera, M.D.**  
Professor and Director, Institute for Cancer Genetics  
Herbert Irving Comprehensive Cancer Center  
Columbia University Medical Center

**William Dalton, M.D., Ph.D.**  
Founding Director, Personalized Medicine Institute  
H. Lee Moffitt Cancer Center & Research Institute  
University of South Florida

**Andrew Dannenberg, M.D.**  
Henry R. Erk, MD – Roberts Family Professor of Medicine  
Weill Medical College of Cornell University

**Robert W. Day, M.D., Ph.D.**  
President and Director, Emeritus  
Member, Public Health Sciences Fred Hutchinson Cancer Research Center  
Professor, Health Services School of Public Health and Community Medicine  
University of Washington

**Raymond M. Dubois, M.D., Ph.D.**  
Dean, College of Medicine  
Medical University of South Carolina

**H. Shelton Earp, III, M.D.**  
Director, Lineberger Comprehensive Cancer Center  
University of North Carolina

**Stephen B. Edge, M.D.**  
Vice President for Healthcare Outcomes and Policy  
Roswell Park Cancer Institute

**Margaret Foti, Ph.D.**  
Chief Executive Director  
American Association for Cancer Research

**Harold P. Freeman, M.D.**  
Medical Director  
Ralph Lauren Center for Cancer Care and Prevention

**Patricia A. Ganz, M.D.**  
Professor, UCLA Schools of Medicine and Public Health  
Director, Division of Cancer Prevention & Control Research  
Jonsson Comprehensive Cancer Center  
University of California, Los Angeles

**David M. Gershenson, M.D.**  
Professor and Chair, Department of Gynecologic Oncology  
MD Anderson Cancer Center  
University of Texas

**Edward Giovannucci, M.D., Sc.D.**  
Associate Professor of Nutrition and Epidemiology  
Harvard School of Public Health

**Anna R. Giuliano, Ph.D.**  
Professor and Director of Cancer Prevention  
H. Lee Moffitt Cancer Center & Research Institute  
University of South Florida

**Gary E. Goodman, M.D., M.S.**  
Staff Oncologist/Joint Member  
Swedish Cancer Institute  
Fred Hutchinson Cancer Research Center

**Stanley R. Hamilton, M.D.**  
Professor and Head Division of Pathology and Laboratory Medicine  
MD Anderson Cancer Center  
The University of Texas

**Claudia Henschke, Ph.D., M.D., FCCP**  
Clinical Professor, Department of Radiology  
The Mount Sinai Hospital  
Mount Sinai Medical Center

**Elmer E. Huerta, M.D., M.P.H.**  
Director, Cancer Preventorium  
Washington Cancer Institute  
Washington Hospital Center

**Waun Ki Hong, M.D.**  
Professor, Department of Thoracic Head and Neck Medical Oncology  
M.D. Anderson Cancer Center  
University of Texas

**Derek M. Huffman, Ph.D.**  
Assistant Professor of Medicine & Molecular Pharmacology  
Co-Director, Healthy Aging Physiology Core  
Institute for Aging Research  
Albert Einstein College of Medicine

**Lovell A. Jones, Ph.D.**  
Research Faculty  
College of Science & Engineering  
Texas A&M University Corpus Christi

**Ann G. Kulze, M.D.**  
Just Wellness, LLC

**LaSalle D. Leffal, Jr., M.D., F.A.C.S.**  
Professor of Surgery  
Department of Surgery  
Howard University Hospital College of Medicine

**Bernard Levin, M.D.**  
Professor, Emeritus  
M.D. Anderson Cancer Center  
University of Texas

**Marc E. Lippman, M.D**  
Deputy Director Kathleen & Stanley Glasser Professor  
Chairman, Department of Medicine  
Leonard M. Miller School of Medicine  
University of Miami

**Scott M. Lippman, M.D.**  
Director, Moores Cancer Center  
University of California, San Diego

**Patrick J. Loehrer, Sr., M.D.**  
Director, Melvin and Bren Simon Cancer Center  
Indiana University

**John L. Marshall, M.D.**  
Associate Professor of Medicine  
Chief, Division of Hematology and Oncology  
Lombardi Comprehensive Cancer Center  
Georgetown University Hospital

**Elena Martinez, M.P.H., Ph.D.**  
Professor of Family and Preventive Medicine  
Moores Cancer Center  
University of California, San Diego

**Harold L. Moses, M.D.**  
Director, Emeritus  
Vanderbilt-Ingram Comprehensive Cancer Center

**Larry Norton, M.D.**  
Deputy Physician in Chief for Breast Cancer Programs  
Memorial Sloan Kettering Cancer Center

**Gilbert S. Omenn, M.D., Ph.D.**  
Professor of Internal Medicine, Human Genetics and Public Health  
University of Michigan

**Darrell S. Rigel, M.D.**  
Director, Melanoma and Pigmented Lesion Division  
Laser Skin Surgery Center of New York

**John C. Ruckdeschel, M.D.**  
CEO, Ruckdeschel Consultants

**David Schottenfeld, M.D., M.Sc.**

John G. Searle Emeritus Professor of Epidemiology  
and Internal Medicine,  
University of Michigan School of Public Health

**Paul Talalay, M.D.**

John Jacob Abel Distinguished Service Professor  
Department of Pharmacology and Molecular  
Sciences  
Johns Hopkins University School of Medicine

**Andrew Weil, M.D.**

Founder and Director, Integrative Medicine  
Program  
University of Arizona

**George J. Weiner, M.D.**

Director, Holden Comprehensive Cancer Center  
University of Iowa

**Richard Wender, M.D.**

Chief Cancer Control Officer  
American Cancer Society

**Petra Wilder-Smith, DDS, Ph.D.**

Director of Dental Programs  
The Beckman Laser Institute and Medical Clinic  
University of California, Irvine

**Walter C. Willett, Ph.D.**

Chairman, Department of Nutrition  
Harvard School of Public Health

**Stephen G. Yang, M.D., FACS, FCCP**

Chief, Division of Thoracic Surgery  
Associate Professor, Surgery and Oncology  
Johns Hopkins Medical Institute

**Robert C. Young, M.D.**

RCY Medicine

## SCIENTIFIC REVIEW PANEL

**Bernard Levin, M.D. (Co-Chair)**

Professor (Emeritus)  
University of Texas, MD Anderson Cancer Center

**James L. Mulshine, M.D. (Co-Chair)**

Vice-Chairman, Scientific Director  
Dean, Graduate College (Acting) and Professor  
Professor, Rush Medical College, Rush University

**Chris Albanese, Ph.D.**

Professor, Departments of Oncology and Pathology  
Director, Preclinical Imaging Research Laboratory  
(PIRL)  
Lombardi Comprehensive Cancer Center  
Georgetown University Medical Center

**Rebecca Ashare, Ph.D.**

Assistant Professor, Center for Interdisciplinary  
Research on Nicotine Addiction  
Perelman School of Medicine  
University of Pennsylvania

**Janet Audrain-McGovern, Ph.D.**

Associate Professor, Department of Psychiatry  
Perelman School of Medicine  
University of Pennsylvania

**Christine D. Berg, M.D.**

Adjunct Professor, Department of Radiation  
Oncology and Molecular Radiation Sciences  
Johns Hopkins Medicine

**David Berrigan, Ph.D., M.P.H.**

**Robert Clarke, Ph.D., D.Sc.**

Dean for Research  
Professor, Oncology  
Lombardi Comprehensive Cancer Center  
Georgetown University Medical Center

**Nancy Emenaker, Ph.D., M.Ed., R.D.N**

Program Director  
National Cancer Institute/NCI  
Nutritional Science Research Group Division of  
Cancer Prevention

**Leena Hilakivi-Clarke, Ph.D.**

Professor, Oncology  
Georgetown University

**Stephen D. Hursting, Ph.D., M.P.H.**

Professor, Department of Nutrition and Nutrition  
Research Institute  
Director, Division of Nutritional Biochemistry  
Member, Lineberger Comprehensive Cancer Center  
University of North Carolina at Chapel Hill

**Mary Beth Martin, Ph.D.**

Professor, Departments of Oncology, Biochemistry,  
and Molecular Biology  
Lombardi Comprehensive Cancer Center  
Georgetown University Medical Center

**Marc D. Schwartz, Ph.D.**

Professor, Oncology  
Associate Director for Population Science  
Co-Director, Fisher Center for Hereditary Cancer  
and Clinical Genomics Research  
Georgetown University  
Lombardi Comprehensive Cancer

**Peter G. Shields, M.D.**

Deputy Director, Comprehensive Care Center  
Professor, College of Medicine  
Wexner Medical Center  
The Ohio State University

**Kenneth D. Tew, Ph.D., D.Sc.**

John C. West Chair in Cancer Research  
Chairman, Department of Cell and Molecular  
Pharmacology and Experimental Therapeutics  
Medical University of South Carolina

**Danyelle M. Townsend, Ph.D.**

Assistant Professor, Department of Drug Discovery  
and Biomedical Sciences  
Medical University of South Carolina

**Bruce J. Trock, Ph.D.**

Director, Division of Epidemiology  
Brady Urological Institute  
Professor of Urology, Epidemiology, Oncology, and  
Environmental Health Sciences  
Johns Hopkins University School of Medicine

**Kent E. Vrana, Ph.D.**

Elliott S. Vesell Professor  
Chair, Department of Pharmacology  
Penn State College of Medicine

**Zhen Zhang, Ph.D.**

Associate Professor, Department of Pathology and  
Oncology  
Johns Hopkins Medical Institutions



"I decided to donate to an organization that concentrates on the cause and prevention more so than creating drugs for treatment. I've always believed that preventing in the first place is better than creating more drugs."

– Donor since 1989



# WAYS TO GIVE

The Prevent Cancer Foundation® relies on donations from supporters like you to achieve our mission of saving lives across all populations through cancer prevention and early detection.

Thank you for your continued generosity and support. Here are several ways you can support the Prevent Cancer Foundation® today:

## DIRECT GIVING

Every dollar donated to the Prevent Cancer Foundation® makes a difference in cancer prevention and early detection. Make a donation of cash or equities to support this lifesaving work.

## HONORARY/MEMORIAL GIVING

Recognize special milestones in your loved ones' lives or celebrate the life of someone you've lost by bestowing a gift to the Prevent Cancer Foundation® in their honor or memory. When the Foundation receives your gift, we will promptly send a personalized tribute card to the person or family you are honoring.

## SUSTAINED GIVING

Monthly or annually recurring gifts provide the Foundation with a reliable source of funds. You can arrange to have a predetermined gift amount automatically charged to your credit card on a regular basis.

## PLANNED GIVING

Estate gifts benefit the Prevent Cancer Foundation® and present the opportunity for tax benefits and income for you and your family. There are many gifting options, ranging from a bequest in your will to various types of charitable trusts. Talk to your financial adviser or attorney about the best way to make an estate gift to the Foundation.

## WORKPLACE GIVING

Workplace donations are a simple way to donate to the Foundation through payroll deduction plans. You can designate your gift to the Foundation through the Combined Federal Campaign or other employee giving programs. Talk to your Human Resources or Charitable Giving Department to learn more about your company's employee giving programs, and ask about a matching gift program that could double the impact of your support!



“Thank you for all you have done to bring attention to cancer and its treatment and prevention. You have touched many lives, including mine, and we are grateful.”

– Diana Enzi, wife of Senator Mike Enzi

The Prevent Cancer Foundation® is a 501(c)3 charitable organization. All donations are tax-deductible.

Gifts can be made online at <http://preventcancer.org/donate> or mailed to:

Prevent Cancer Foundation®  
1600 Duke Street, Suite 500  
Alexandria, VA 22314



# PEARLS OF FUNDING

## *Legacy Members and Lifetime Friends*

### THE EDWARD PERRY RICHARDSON LEGACY SOCIETY

*Edward Perry Richardson was the father of Carolyn R. Aldigé, president and founder of the Prevent Cancer Foundation®. His struggle against cancer inspired her to establish the organization and his memory has sustained Prevent Cancer's mission of saving lives across all populations through cancer prevention and early detection. Members of the Edward Perry Richardson Legacy Society are special friends of the Prevent Cancer Foundation® who have committed to ensuring the legacy of Prevent Cancer by naming it as a beneficiary in their will, charitable gift annuity, charitable trust, individual retirement account or life insurance policy, or have made a gift of real estate or tangible personal property.*

#### Legacy Members

Mr. Henry Acad\*  
Mr. and Mrs. James G. Aldigé III  
Mrs. Betty C. Alewine  
Mr. Dewey Vincent Allen\*  
Mrs. Florence Atkins\*  
Mr. Forrest R. Ayers\*  
Miss Helen U. Baker\*  
Ms. Margaret Bartel\*  
Mrs. Lee Lupher Bartruff\*  
Ms. Reba Cora Bean\*  
Mr. John A. Beaty\*  
Mr. Anton J. Befort\*  
Ms. Alice Elizabeth Behnke\*  
Ms. Ellen Behrens  
Mrs. Blanche Berg  
Dr. Charles Bessey\*  
Ms. Elizabeth M. Beylon\*  
Ms. Elizabeth R. Black\*  
Mr. Rex A. Bohling  
Mrs. Anne R. Bord\*  
Ms. Lucille Bowman\*  
Mrs. Rosa Braun\*  
Mrs. Lucille Brents\*  
Ms. Artie Mae Brooks\*  
Ms. Jenny Brown\*  
Dr. Victoria Nicolau Busulegas\*  
Ms. Ettorina M. Cardella\*  
Ms. Ida T. Cavoli\*  
Mrs. Elizabeth Chisholm  
Ms. Victoria Conchie\*  
Mrs. Isabel H. Cosgrove\*  
Mrs. Jennie R. Craib\*  
Ms. Martha F. Cromley\*

Mr. Richard L. Davies\*  
Mr. Marvin M. Davis\*  
Mrs. Idella Church Dean\*  
Mrs. Katharine S. DeLashmutter\*  
Miss Leslie C. Devereaux  
Ms. Irene Diefenbach\*  
Mrs. Sally Dollinger\*  
Mrs. Virginia S. Doolittle\*  
Mrs. Myrtle F. Draffen\*  
Mrs. Sylvia N. Ehrlich\*  
Mr. Charles N. Eischen\*  
Mr. Jerome L. Ellenberg\*  
Miss Grace M. Elliott\*  
Ms. A. Irene Emswiler\*  
Mr. Paul Escalante\*  
Miss Mollie R. Evin\*  
Mr. Edward Joseph Fabish\*  
Ms. Barbara Fallick\*  
Ms. Anita M. Farmer\*  
Mr. James Farrell  
Ms. Claire Fearnside\*  
Ms. Teresa Felton\*  
Mr. Robert I. Fendrich\*  
Ms. Estelle Filomio\*  
Mr. and Mrs. Peter J. FitzGerald, Sr.  
Mr. Howard E. Foltz\*  
Mr. Marion Frank\*  
Ms. Berta Mae Gallagher\*  
Mr. Lewis T. Gardiner\*  
Mr. Harold N. Gilbert\*  
Mrs. Esther Glendinning\*  
Ms. Susan L. Goroll\*  
Ms. Patricia O. Greenwell\*  
Mr. James T. Grossmann  
Mrs. Helen Hall\*  
Mr. Samuel D. Hall, Jr.\*  
Ms. Elizabeth Handley\*  
Ms. J. Harriet Hanson\*  
Ms. Myrtle Hara\*  
Ms. Sarah A. Hayat\*  
Ms. Goldie Herrmann\*  
Mrs. Ruth Hoare\*  
Ms. Maria M. Hoemann\*  
Mrs. Deborah Houlihan  
Mr. Charles S. Houser  
Mrs. Alexine Clement Jackson  
Ms. Stella Jacobs\*  
Ms. Elizabeth C. Jenne\*  
Ms. Hazel Johnson\*  
Mr. Nahum Joslyn\*  
Mrs. Leslie A. Karr  
Mr. Joseph F. Kelly, Jr.  
Mrs. Lenora M. Kerschner\*  
Ms. Virginia Kintz\*  
Lt. Col.\* and Mrs. William Konze  
Ms. Rose Koury\*

Ms. Harriet R. Kutik\*  
Mr. Emil G. Kramer\*  
Mr. Herbert Kramer\*  
Ms. Lorraine D. Lader\*  
Ms. Carla Laemmle\*  
Ms. Tirzah A. Lassahn\*  
Mrs. Floy Lehman\*  
Ms. Jennie C.C. Li\*  
Ms. Laurie D. Lima\*  
Mr. and Mrs. Hal Litzius\*  
Mr. Stanley L. Mackey\*  
Mr. Gordon L. Mann, Jr.\*  
Mr. Pasquale A. Maresco\*  
Mr. Benjamin Marks\*  
Ms. Blondie L. Marsh\*  
Ms. Miriam H. Mason\*  
Mrs. Mary E. Mathis\*  
Ms. Barbara Mazur\*  
Mr. Norman S. McCallister\*  
Mrs. Virginia N. McConchie\*  
Mr. Robert Lee McGuire\*  
Mr. Robert F. McKinley\*  
Ms. Margaret F.L. McKnight\*  
Ms. Ezilda T. Michel\*  
Ms. Irene B. Miller\*  
Mr. and Mrs. Jon E. Mittelhauser  
Ms. Diane M. Montini\*  
Ms. Mary Helen Moorhead\*  
Mr. Donald Moy\*  
Ms. Marabelle Nape\*  
Ms. Claire Nemser\*  
Mr. and Mrs. Donald R. Neubrecht\*  
Mrs. Elizabeth H. Newberry\*  
Mr. Bernard Niewoehner\*  
Mr. Harvey L. Panzer\*  
Mrs. Anna Papa\*  
Ms. Rose Pasternak\*  
Mrs. Catherine Bond Patterson\*  
Ms. Lonetta C. Patterson\*  
Mr. and Mrs. Thomas Perez  
Mrs. Josephine Ann Perrella\*  
Ms. Patricia A. Peterson\*  
Ms. Sylvia Petters\*  
Mr. Richard J. Phillips\*  
Mr. John J. Pikulski\*  
Mrs. Myrtle Potter\*  
Mr. John Prigee\*  
Mrs. Nancy Gray Pyne  
Mrs. Josephine Rich\*  
Ms. Joan L. Rochelle\*  
Mrs. Zelda B. Rockwell\*  
Ms. Arlene Rosen\*  
Mr. Richard T. Russell, Jr.  
Mrs. Ida I. Schaefer\*  
Dr. and Mrs. Daryl R. Schaller  
Ms. Marian A. Schwab\*

Mr. Glenn E. Selix\*  
Mrs. Theresa R. Shapiro\*  
Ms. Eleanor Shelly\*  
Mr. Alfred J. Shaw\*  
Ms. Dorothy Singleton\*  
Mr. Elias Skaaren\*  
Mrs. Elizabeth Cornell Smith\*  
Ms. Elvera W. Smith\*  
Ms. Claire Strub\*  
Ms. Genevieve Suss\*  
Ms. Mildred Swartzbaugh\*  
Ms. Ruth Thayer\*  
Mr. Overton Arnold Thompson\*  
Ms. Nancy E. Tronaas  
Mrs. Ione M. Uphoff\*  
Mr. Nicholaas Van Reisen  
Ms. Colleen Mae Veith\*  
Dr. Jan P. Vette\*  
Ms. Margaret Vorous  
Ms. Rose Helen Walker\*  
Mrs. Margery L. Weil\*  
Mr. Richard Weiss\*  
Ms. Bertha Wempe\*  
Ms. Sarah H. West\*  
Mrs. Laura S. Williams  
Mrs. Margaret A. Wilson\*  
Ms. Kathy Winslowe\*  
Ms. Victoria Winters\*  
Mr. James B. Wittrock\*  
Mr. Murlyn V. Wolstenholm\*  
Ms. Edith M. Zimmerman\*  
Ms. Bernice Zuber\*  
\* Deceased

### LIFETIME FRIENDS

*Lifetime Friends (\$25,000 and above in lifetime giving)*

#### Individuals

##### *\$1,000,000 and above*

The Devereaux Foundation

##### *\$500,000 to \$999,999*

Estate of Tirzah A. Lassahn

Estate of Gordon L. Mann, Jr.

Joan L. Rochelle Revocable Trust

Dr. Paul G. Stern

##### *\$100,000 to \$499,999*

Dr. and Mrs. Ralph W. Alewine III

Estate of Dewey V. Allen

The Cecile & Fred Bartman Foundation

Estate of Lee Lupher Bartruff

Bohling 1994 Trust

Estate of Anne R. Bord

The Honorable Frank C. Carlucci  
and Mrs. Marcia Myers Carlucci  
Estate of Martha F. Cromley  
Estate of Richard L. Davies  
Estate of Marvin M. Davis  
Mr. and Mrs. Ron Doornink/  
Doornink Family Charitable Fund  
Robert I. Fendrich Family Trust  
Mr. and Mrs. Drew Figdor  
Mrs. Nancy M. Gray  
Estate of Samuel D. Hall, Jr.  
Mr. and Mrs. Charles Holden III  
Mr. and Mrs. Don Hutchins, Jr.  
Estate of Hazel M. Johnson  
Lt. Col. and Mrs. William Konze  
Estate of Harriet R. Kutik  
Estate of Jennie C. Li  
Laurie D. Lima Trust  
Mr. and Mrs. Richard Meyer III  
The Neubrecht Family Trust  
Ms. Jean Perin  
Estate of Josephine Ann Perrella  
Estate of Theresa R. Shapiro  
Estate of Dorothy Singleton  
Mrs. Rachel Stern  
Estate of Betty C. Stich  
Mrs. Marianne Stohlman/Richard  
& Marianne Stohlman Family  
Foundation  
Estate of Margery L. Weil  
Ms. Virginia A. Weil/The VAW Family  
Fund  
Estate of Margaret A. Wilson  
Estate of Murlyn V. Wolstenholm

#### **\$25,000 to \$99,999**

Mr. and Mrs. James G. Aldigé III  
The Honorable Hushang Ansary and  
Mrs. Ansary  
Alfred Bartel and Margaret Bartel 1992  
Revocable Trust  
Estate of John A. Beaty  
Ms. Catherine P. Bennett and  
Mr. Fred Frailey  
Mr. and Mrs. John D. Beveridge  
Elizabeth R. Black Revocable Trust  
Mr. and Mrs. David G. Bradley  
Mr. and Mrs. Michael F. Brewer/  
Michael Brewer and Janet Brown  
Charitable Fund  
Estate of Rosa Braun  
Mr. and Mrs. Marvin P. Bush  
Mr. Landon H. Butler  
Estate of Ida T. Cavoli  
Ms. Concetta DiLeo  
The Max and Victoria Dreyfus  
Foundation  
Mr. and Mrs. Alan P. Dye  
Estate of Grace M. Elliott  
Estate of Paul Escalante  
Ms. Linda K. Eyestone  
Estate of Edward Joseph Fabish  
Estate of Barbara Falltrick  
Estate of Anita M. Farmer  
Estate of Claire Fearnside  
Mrs. Andrea S. Ferris  
Mr. and Mrs. Peter J. FitzGerald, Sr.

Estate of Howard E. Foltz  
Irene B. Miller Foundation  
Mrs. Kimberley D. Fritts and  
Mr. Francis M. Turner  
The Honorable and Mrs. Craig Fuller  
Mr. and Mrs. Rafe Furst  
Helen M. Galvin Charitable Trust  
Estate of Lewis T. Gardiner  
Mr. Thomas Gardner  
Mr. and Mrs. Bruce A. Gates  
Mr. and Mrs. Joseph Gleich  
Mr. and Mrs. Phil Gordon  
Estate of Patricia O. Greenwell  
Estate of Mr. and Mrs.  
Van Buren Hansford  
Estate of J. Harriet Hanson  
Estate of Sarah A. Hayat  
Mr. Phillip Hellmuth, Jr.  
Mr. and Mrs. Terry J. Houlihan  
Joel & Carol Jankowsky Foundation  
Mr. and Mrs. Thomas H. Johnston  
Mrs. Leslie A. Karr  
Mr. Anthony P. Kavanagh  
KBPK Foundation  
Virginia J. Kintz  
Charitable Remainder Trust  
Charles A. Kraenzle  
Colon Cancer Foundation  
Mr. Brock R. Landry and Mrs. Diane M.  
Casey-Landry  
The Lebensfeld Foundation  
Estate of Hal Litzius  
Mr. and Mrs. Gary R. Lytle  
Ms. Kathryn A. MacLane and  
Mr. Dan Alcorn  
Estate of Pasquale A. Maresco  
Mr. and Mrs. Michael McGettigan  
Mr. and Mrs. Mark D. McKinnon  
Mr. and Mrs. Michael R. Megargee  
Mr. and Mrs. Kenneth Moelis  
Mr. Chris Moneymaker  
Mrs. Angela Moore  
Dr. James L. Mulshine and  
Dr. Pamela Mulshine  
Mr. and Mrs. Arthur H. Nash  
George Preston Marshall Foundation  
Sylvan and Ann Oestreicher Foundation  
Estate of Lonetta C. Patterson  
Mrs. Marjorie F. Perin  
Peterson Family Foundation  
Estate of Sylvia Petters  
Mr. Dennis Phillips  
Ms. Joann A. Piccolo and  
Mr. Timothy Carmody  
The Lynn R. & Karl E. Prickett Fund  
Mr. and Mrs. Alfred C. Quenneville  
Catherine B. Reynolds Foundation  
Mr. and Mrs. James A. Rogers  
Ida I. Schaefer Trust  
Marian A. Schwab Revocable Trust  
Estate of Alfred J. Shaw  
The Honorable and  
Mrs. Kenneth W. Starr  
Mr. and Mrs. Kenneth E. Stinson/Ken  
and Ann Stinson Fund of the Omaha  
Community Foundation  
Estate of Claire B. Strub

Mr. and Mrs. Mark A. Taylor  
Estate of Overton Arnold Thompson  
Mr. David Tintera  
Estate of Ione M. Uphoff  
Mr. and Mrs. Robert A. Vanderhye  
Estate of Collen Mae Veith  
Estate of Jan P. Vette  
Mrs. Sharon Borg Wall  
Ms. Irene E. Walters  
Mr. Paul Wasicka  
Mr. Robert S. Weil, Sr./The Viro Fund  
Mr. and Mrs. Anthony Welters  
Estate of Sara H. West  
Mr. and Mrs. D. Anderson Williams/  
The Christian Giving Fund  
Estate of James B. Wittrock  
Mr. Robert H. Zeps  
Estate of Edith M. Zimmerman  
Estate of Bernice Zuber

#### **Organizations**

##### **\$1,000,000 and above**

Amgen  
Amgen Foundation  
AstraZeneca LP  
Awesome Games Done Quick  
Bristol-Myers Squibb Oncology  
Genentech, Inc.  
GlaxoSmithKline  
Lilly USA, LLC  
Merck & Co., Inc.  
Novartis Pharmaceuticals Corp.  
Pfizer  
Pharmacia Corporation  
Roche  
Sanofi  
Susan G. Komen

##### **\$500,000 to \$999,999**

Eisai, Inc.  
PhRMA  
Wal-Mart/Sam's Club Foundation

##### **\$100,000 to \$499,999**

Abbott Laboratories  
Akin, Gump, Strauss,  
Hauer & Feld, L.L.P.  
American Cancer Society  
American Council for Excellence &  
Opportunity  
American Society of Clinical Oncology  
AmerisourceBergen  
Astellas/OSI  
AT&T  
Bank of America  
Bayer HealthCare LLC  
Beckman Coulter  
Caesar's Entertainment Group  
Celgene Corporation  
COMSAT International Holdings  
Daimler  
EMD Serono, Inc.  
Ernst & Young LLP  
Exact Sciences  
FedEx Corporation  
Ford Motor Company

FoxKiser  
General Dynamics Corporation  
General Motors Foundation  
Georgetown University/Lombardi  
Comprehensive Cancer Center  
Humble Bundle, Inc.  
IBM Employee Services Center  
Johnson & Johnson  
Kellogg Company  
LIVESTRONG Foundation  
Living In Pink, Inc.  
Lockheed Martin Corporation  
Mac Heist  
Microsoft Corporation  
NACDS Foundation  
National Association of Broadcasters  
National Race for the Cure  
New York Life  
Onyx Pharmaceuticals  
PwC  
Qwest Communications  
Salt River Project  
SBC Foundation  
SBC Telecommunications, Inc.  
Schering-Plough Corporation  
Southern Company  
Takeda Pharmaceuticals International  
TE Connectivity Ltd.  
The Boeing Company  
The Gloria Heyison Breast Cancer  
Foundation  
Time Warner, Inc.  
Toyota Motor North America, Inc.  
Tribune Company  
Tyco  
United Parcel Service  
United Way of the National Capital Area  
US Oncology  
Verizon

##### **\$25,000 to \$99,999**

1-800 Contacts, Inc.  
A&E Television Networks  
AbbVie  
Accenture LLP  
Active Network  
Advanced Health Media  
Advanced Medical Technology  
Association  
Aetna Foundation, Inc.  
Aetna Health Plans  
Aflac  
Agouron Pharmaceuticals  
Aircraft Owners & Pilots Association  
Airlines for America  
Alaska Poker Association  
Alberto Culver USA, Inc.  
Alcalde & Fay  
Alexandria Real Estate Equities  
Allied Domecq Spirits & Wine USA, Inc.  
Allstate Insurance Company  
Alston & Bird, LLP  
American Airlines, Inc.  
American Beverage Association  
American College of Radiology



American Express Foundation  
Employee Gift Matching  
American Fuel & Petrochemical  
Manufacturers  
American Gaming Association  
American Gastroenterological  
Association  
American Insurance Association  
American Medical Association  
American Society for Radiation  
Oncology  
American-Italian Cancer Foundation  
AmeriChoice Health Services, Inc.  
APCO Worldwide  
Apple Inc.  
Arthur Andersen LLP  
Aventis Pharmaceuticals, Inc.  
B.K. Miller Company, Inc.  
Battelle  
Biotechnology Industry Organization  
Black Entertainment Television  
BlueCross BlueShield Association  
BlueCross BlueShield of Nebraska  
BNSF Railway Company  
Boston Scientific Corporation  
Brink's Company  
Capital Group Companies Charitable  
Foundation  
Capital One Bank  
Cardinal Bank Community Fund/  
Community Foundation for Northern  
Virginia  
Cardinal Health  
Cardon Healthcare Network  
C-Change  
CenterPoint Energy, Inc.  
Chicago Mercantile Exchange  
Christus Health  
CIGNA  
Cingular Wireless  
Cisco Systems, Inc.  
Citigroup Management Corp.  
Coalition of Cancer Cooperative  
Groups, Inc.  
Coca-Cola Company  
College of American Pathologists  
Comcast Corporation  
ConAgra Foundation, Inc.  
Corman Construction, Inc.  
Council of Fashion Designers  
of America  
Covidien  
Covington & Burling  
CTIA-The Wireless Association  
Dell Computer Corporation  
Dell Direct Giving  
Deloitte  
Diageo North America, Inc.  
Discovery Communications  
Dominion Resources Services, Inc.  
Duke Energy Corporation  
Edison Electric Institute  
El Paso Corporation  
Emergent BioSolutions  
Endo Pharmaceuticals  
Entergy Corporation

ExxonMobil Corporation  
FLUOR  
Focus Foundation  
Freddie Mac  
Friedman, Billings, Ramsey & Co.  
Charitable Foundation, Inc.  
Full Tilt Services Corporation  
Fund to Prevent Cervical Cancer  
Game Time Marketing, LLC  
GE Company  
General Motors LLC  
Genomic Health, Inc.  
George Washington University Breast  
Care Center  
Georgia Department of Education  
School & Community Nutrition  
Gilead Sciences  
Goldman, Sachs & Co.  
Grocery Manufacturers of America, Inc.  
H. J. Heinz Company  
Harrah's Operating Company, Inc.  
Helsinn  
Honeywell International, Inc.  
Hunton & Williams  
iHeartMedia, Inc.  
Instinet  
International Association for the  
Study of Lung Cancer  
International Physician Networks LLC  
Jack Horner Communications, Inc.  
Ketchum/The Washington Group  
Kiewit Companies Foundation  
Koch Industries, Inc.  
KPMG LLP  
Ladies Charity Classic of the  
National Capital Area  
Mark Krueger & Associates  
Mayfair Partners, L.P. Boston Market  
Middle-Atlantic Section of the PGA  
Mortgage Insurance Companies  
of America  
Motorola  
NASDAQ  
National Association of Convenience  
Stores  
National Cable & Telecommunications  
Association  
National Dialogue on Cancer  
Foundation  
Nestlé  
News Corporation  
NextEra Energy, Inc.  
Nickles Group  
Nortel Networks  
Northrop Grumman Corporation  
NRA – Institute for Legislative Action  
Nuclear Energy Institute  
Opus East, L.L.C.  
Otsuka America Pharmaceutical, Inc.  
Palmetto Peloton Project, Inc.  
Palms Casino Hotel  
Patton Boggs LLP  
Personal Care Products Council  
Pfizer Foundation  
PGA Tour Charities, Inc.  
PNC

Poker Players Alliance  
Poker Productions  
Pokerstars  
Progress Energy  
Prostate Cancer Foundation  
Quest Diagnostics  
Quinn Gillespie & Associates, LLC  
Recording Industry Association  
of America  
Reliant Resources, LLC  
Reuters  
Rocksprings Foundation  
Rockwell Automation  
Ron Ruffennach Golf Classic  
Rush University Medical Center  
Schering-Plough Foundation, Inc.  
Shell Oil Company  
Siemens Corporation  
SIFMA  
Sprint Nextel Corporation  
Stohlgan Volkswagen, Inc.  
Story Partners  
Sun Safety Alliance  
Sunoco, Inc.  
Tele-Communications, Inc.  
Teva Pharmaceuticals  
Time Warner Cable  
Travelers Indemnity  
TTR Sotheby's International  
TXU Business Services  
U.S. Chamber of Commerce  
Union Pacific Corporation  
United Airlines  
United States Steel Corporation  
United States Telecom Association  
United Way Crusade of Mercy  
United Way of Greater Philadelphia and  
Southern New Jersey  
United Way of New York City  
United We Care  
Universal Music Group  
Van Scoyoc Associates  
Vanderbilt University and Medical  
Center  
Venable Foundation, Inc.  
Viacom International, Inc.  
Vodafone U.S. Foundation  
Wachovia  
WEST\*GROUP Management LLC  
Williams & Jensen, PLLC  
Wine and Spirits Wholesalers  
of America  
Women's Shooting Sports Foundation  
of the National Capital  
World Bank Community Connections  
Fund  
World Reach, Inc.  
Wyeth  
Yahoo!  
Yetee LLC

## MEMORIAL AND HONOR TRIBUTES

*These tributes are special ways to honor friends, loved ones and colleagues. Honor gifts often mark a special occasion like Mother's or Father's Day, Bar/Bat Mitzvahs or a birthday. Many couples also designate the Prevent Cancer Foundation® as a recipient of contributions in lieu of wedding or shower gifts. In return, the Foundation sends a card acknowledging these thoughtful donations.*

### Honor Tributes

Mrs. Carolyn R. Aldigé  
Ms. Barbara Allen  
Ms. Mariel Baca  
Mr. Turner Bartenfeld  
Ms. Catherine P. Bennett and  
Mr. Fred Frailey  
Mr. Benny Blanco  
Ms. Patricia Bobic  
Ms. Judi Cecena  
Mr. and Mrs. Peter J. FitzGerald, Sr.  
Mr. Brian Graham  
Ms. Katie Jo Hamre  
Mr. Charlie Holden  
Ms. Margaret Holladay  
Ms. Mary Kate Holladay  
Mr. Don Hutchins  
Ms. Katherine Kelly Lang  
Ms. Lynn Lankau  
Mr. and Mrs. George Martin  
Ms. Sheri McGrath  
Ms. Bethany Rakes  
Mr. Andrew Sakai  
Ms. Julie Werner Simon  
Ms. Susan Vizvary  
Ms. Lisa Walker

### Memorial Tributes

Ms. Patsy Anderson  
Ms. Mary Bacarisse  
Ms. Margaret Belanus  
Ms. Valeria Beversdorf  
Mrs. Margaret Blinks  
Ms. Nancy Butler  
Mrs. Adelaida Cabrera  
Mr. Gregorio Cabrera  
Mr. Hardwick Caldwell  
Ms. Phyllis Cipriano  
Mr. William Cloud  
Dr. Gerald Cohen  
Mrs. Bernice Cohen  
Ms. Mary C. Conley  
Ms. Michele A. Conley  
Ms. Sara E. Cooper  
Mr. Fred H. Danzey, Sr.  
Ms. Sharon Davis  
Mrs. Nancy Hosmer Edmond  
Mr. Michael T. Errecart  
Mr. Merv Fauss  
Ms. Hila Ferguson  
Ms. Dianne Fischer

Mr. Robert Michael Fowler  
 Ms. Louise Fricano  
 Ms. Jane Gilbert  
 Ms. Omelia Gonzalez  
 Ms. Janet Habecker  
 Ms. Mary Ellen Hegedus-DeVico  
 Mr. Charles Hering  
 Ms. Penny Hillsman  
 Mr. Troy A. Hinkle  
 Mr. William Hoene  
 Mrs. Janie Houser  
 Mr. Son Huback  
 Mrs. Patricia R. Hunt  
 Mr. Jim Inglett  
 Mr. Kenneth J. Juneau  
 Mr. Joseph Jvetzer  
 Mr. Murray Kennedy  
 Ms. Tommie Jean Kennepohl  
 The Honorable Harold M. Keshishian  
 Mrs. Harriet Kleinberg  
 Mrs. Joanne Kuhn  
 Mr. Richard La Fave  
 Mr. Russell Landry  
 Mr. Richard I. LeMahieu  
 Ms. Virgene Lowe  
 Mr. Jim Lyndsay  
 Mrs. Barbara Lytle  
 Mr. Barry Martin  
 Mr. William H. McFadden  
 Mr. Bruce Melillo  
 Mr. Brian Milam  
 Ms. Karen Newell  
 Ms. Alice Niamatali  
 Ms. Elizabeth Nibley  
 Mrs. Ann Northrup  
 The Honorable Michael G. Oxley  
 Mr. Thomas Pollack  
 Mr. Ronald Porter  
 Ms. Sasha Premoli  
 Ms. Elma Pugh  
 Mr. George Raney  
 Mrs. Christy Rocks  
 Ms. Beverly Rothstein  
 Mr. Kermit C. Schoch  
 Mr. Randy Schumann  
 Mrs. Doris Schwartz  
 Ms. Molly Smith  
 Mr. Richard Stohlman  
 Mr. Charles Ullman  
 Mr. Paul Vasiloff  
 Mr. Roger Veiga  
 Mr. Martin Vine  
 Ms. Carole Watrous  
 Mr. William Weissler  
 Mrs. Margaret S. Wiegand  
 Mr. J. H. T. Wilson  
 Ms. JoAnn Wolf

## THE DOLL SOCIETY

(\$25,000 and above)

*Sir William Richard Shaboe Doll, a distinguished British physician and epidemiologist, was the first scientist to establish the link between smoking and lung cancer. This singular discovery led scientists to identify a genetic mutation which is caused by chemicals found in tobacco smoke.*

### Individuals

**\$100,000 and above**

Estate of Florence Atkins  
 Estate of Eleanor Shelly

**\$50,000 to \$99,999**

Miss Leslie Devereaux

**\$25,000 to \$49,999**

The Honorable Frank C. Carlucci and  
 Mrs. Marcia Myers Carlucci  
 Mr. and Mrs. C. T. Rowe

### Organizations

**\$1,000,000 and above**

Awesome Games Done Quick 2016

**\$100,000 to \$999,999**

AbbVie, Inc.  
 Amgen  
 Genentech, Inc.  
 Gilead Sciences  
 Hologic, Inc.  
 Matthew Hill Foundation, Inc.  
 Merck  
 Pfizer Inc.

**\$50,000 to \$99,999**

Eisai Inc.  
 Lilly USA, LLC  
 Novartis Pharmaceuticals Corporation  
 PwC  
 The Yetee LLC

**\$25,000 to \$49,999**

Abbott Laboratories  
 Bank of America  
 Bristol-Myers Squibb Oncology  
 FedEx Corporation  
 FLUOR  
 Ford Motor Company  
 Helsinn Group  
 Humble Bundle, Inc.  
 Living In Pink, Inc.  
 National Association of Broadcasters  
 Northrop Grumman Corporation  
 PhRMA  
 Walmart Stores, Inc.

## THE BURKITT SOCIETY

(\$10,000 to \$24,999)

*Denis Parsons Burkitt was the pioneering British surgeon who first discovered that some cancers could be cured with chemotherapy. He is also known for associating a low-fiber diet with many of the serious diseases in Western society.*

### Individuals

Ms. Catherine P. Bennett and  
 Mr. Fred Frailey  
 Michael Brewer and Janet Brown  
 Charitable Fund  
 The Carl M. Freeman Foundation, Inc.  
 Mrs. Kimberley D. Fritts and  
 Mr. Francis M. Turner  
 Mr. and Mrs. Bruce A. Gates  
 Mr. and Mrs. Don Hutchins, Jr.  
 Joel & Carol Jankowsky Foundation  
 Mr. Anthony P. Kavanagh  
 Mr. Brock R. Landry and  
 Mrs. Diane M. Casey-Landry  
 Ms. Katherine Kelly Lang  
 Laurie D. Lima Trust  
 Ms. Elma Levy  
 Ms. Jean Perin  
 Mr. Markus Persson  
 Ms. Joann A. Piccolo and  
 Mr. Timothy Carmody  
 Mr. Craig Piligian  
 The Juliet Rosenthal Foundation, Inc.  
 Mr. Jonathan M. Topodas  
 Ms. Virginia A. Weil

### Organizations

Akin, Gump, Strauss,  
 Hauer & Feld, L.L.P.  
 Alexandria Real Estate Equities  
 Allstate Insurance Company  
 Alston & Bird, LLP  
 American Airlines, Inc.  
 American Chemistry Council  
 American College of Radiology  
 American Endowment Foundation  
 AmerisourceBergen  
 APCO Worldwide  
 Ariad Pharmaceuticals  
 Astellas Pharma  
 Baker & Hostetler, LLP  
 Battelle  
 The Boeing Company  
 Capital One Bank  
 Celgene Corporation  
 Comcast Corporation  
 Community Oncology Alliance, Inc.  
 Deloitte  
 Dropbox  
 Edison Electric Institute  
 EMD Serono, Inc.  
 Forbes-Tate Partners, LLC  
 Green Flash Brewing Co.  
 Health Care Services Corporation  
 Inova Health System Foundation

JAKL, LLC  
 The Midtown Group  
 Motion Picture Association  
 of America, Inc.  
 The NASDAQ Stock Market, Inc.  
 National Cable & Telecommunications  
 Association  
 New York Life  
 Nuclear Energy Institute  
 Otsuka America Pharmaceutical, Inc.  
 Pacific Gas & Electric Company  
 Quest Diagnostics  
 Salt River Project  
 Southern Company  
 Stohlman Volkswagen/Subaru  
 Tesaro  
 Teva Pharmaceuticals  
 The Travelers Indemnity Company  
 U.S. Chamber of Commerce  
 Venable Foundation, Inc.  
 Viacom  
 VP Racing Fuels, Inc.

## THE PETO SOCIETY

(\$5,000 to \$9,999)

*Sir Richard Peto is a distinguished physician and epidemiologist whose 1981 research at Oxford University with Sir William Doll connected diet and cancer. This work, along with that of other investigators, confirmed that 35 percent of certain cancers may be prevented by eating a healthy diet.*

### Individuals

The Cecile & Fred Bartman Foundation  
 Mr. Landon H. Butler  
 The Honorable Victor H. Fazio  
 Mr. and Mrs. Peter J. FitzGerald, Sr.  
 Mr. Gau Frederick  
 Mr. Daniel Gibson  
 Mr. and Mrs. Gary R. Lytle  
 Ms. Blondie L. Marsh  
 Mr. Justin J. McCarthy  
 Mr. Scott McIntyre  
 Irene B. Miller Foundation  
 James L. Mulshine, M.D.  
 Mr. Ray Narvaez, Jr.  
 Mr. and Mrs. Richard C. Notebaert  
 Mr. Ted Okon  
 Rogers Rissler Foundation  
 Mr. and Mrs. G. D. Vieth  
 Mr. Robert S. Weil, Sr.

### Organizations

Anonymous  
 AT&T  
 Biotechnology Industry Organization  
 Brownstein Hyatt Farber Schreck  
 CenturyLink  
 Clark-Winchcole Foundation  
 Endo Pharmaceuticals  
 Exact Sciences Corporation  
 Faxitron  
 Georgetown Lombardi  
 Comprehensive Cancer Center



Glover Park Group, LLC  
iHeartMedia, Inc.  
Independent Insurance Agents &  
Brokers of America, Inc.  
Johnson & Johnson  
MassMutual  
MasterCard Worldwide  
Mehlman Castagnetti Rosen Bingel &  
Thomas, Inc.  
Michigan Rod Products  
Nathanson + Hauck LLC  
National Association of Realtors  
The Nickles Group LLC  
ONEHOPE Foundation  
Pharmaceutical Care Management  
Association  
PNC  
Reston Limousine  
Rockwell Automation  
Rush University Medical Center  
SIFMA  
Taiho Oncology  
Tarplin, Downs, and Young, LLC  
Time Warner Cable  
Twelfth Sight Ltd.  
Verizon  
Yahoo!  
ZD Wines

## THE DEVEREAUX SOCIETY

(\$1,000 to \$4,999)

*In 1993, Leslie Cameron Devereaux established the Richard C. Devereaux Outstanding Young Investigator Award in memory of her father who died of lung cancer. This grant or fellowship supports promising lung cancer prevention research.*

### Individuals

Mr. Karl Agell  
Mr. and Mrs. James G. Aldigé III  
Mr. Abdullah Al-Saud  
Ms. Carrie L. Amaya  
Mr. Matt Anderson  
Mr. Peter Andrews  
Mr. Stephen Augenstein  
Mr. Brett Bande  
Mr. John A. Bardi  
Mr. Darryl Bass  
Mr. Drew Beierwaltes  
Ms. Linda K. Berdine  
Mr. and Mrs. John D. Beveridge  
Mr. Casey Bird  
Mr. Richard F. Blackburn  
Ms. Linda Blount  
Mr. Harvey R. Boltwood  
Mr. David Boylan  
Mr. Raphael Brambilla  
Mr. William Briggs  
Mr. Nicolas Bruneau  
Mr. F. Andrew Carroll III  
Mr. Timothy Carver  
Mr. Richard L. Chadakoff

Ms. Ashleigh Charlson  
The Honorable Ronald I. Christie  
Mr. Jay Claiborn  
Mr. Jonathon Clough  
Mr. David Cockreham  
Mr. James K. Conzelman  
Ms. Amber Cottle  
Mr. Michael Cowart  
Mr. Jay N. Cranford III  
Mr. Christopher Curry  
Mr. Benjamin C. Cutler  
Mr. Ed Datri  
Mr. Luiz Miguel De Oliveira Costa  
Dr. P. J. Wakelyn and  
Ms. Suzanne C. DeFrancis  
Ms. Stephanie DeLong  
Estate of Eva Devecsey  
The Honorable and  
Mrs. Norman D. Dicks  
Paul C. Domson, M.D.  
The Honorable and  
Mrs. Calvin M. Dooley  
Mr. and Mrs. Ron Doornink  
Mr. Sébastien Dournac  
Mr. and Mrs. Howard Drenth  
Mr. Matt Drury  
Mr. Timothy Dube  
Mr. Timothy Durnan  
Mr. and Mrs. Alan P. Dye  
Mr. David Eby  
Ms. Arianne Ferare  
Mr. Michael Fisher  
Ms. Jeremy FitzGerald  
Mr. J. J. Foote  
Mr. Andrew Foster  
Mr. Jerrod Fuller  
Mr. Sam Geduldig  
Mr. Gregory Gentry  
Mr. Christopher M. Giblin  
Mr. Guillaume Gicquel  
Ms. Chaseadaw Giles  
Mr. Glenn Gjesdal  
Mr. Ben Goldhaber  
Mr. Marc Gonzales  
Mr. Max Gonzalez  
Mr. Matt Goudreau  
Mr. Thomas J. Graves  
Mr. and Mrs. David Greene  
Mr. Chares Gupton and  
Mrs. Joan Simpson  
Mr. Isaac Guthrie  
Mr. and Mrs. Ernest T. Haas  
Mrs. Lilibet Hagel  
Mr. Jay Harvey  
Mr. Larry Hastings  
Mr. Mikael Hedberg  
Mr. Dane Henager  
Mr. Seth Hetu  
Mr. Alexander Hidalgo  
Mr. Jeff Hobson  
Mr. Daniel Hoernemann  
Mr. and Mrs. Scott R. Holden  
Mr. and Mrs. Philip E. Holladay, Jr.  
Mrs. Tina F. Holleman  
Mr. Ryan Holtz

Mr. and Mrs. Michael W. Hopke  
Mr. Charles S. Houser  
Mr. and Mrs. John W. Howard, Jr.  
Mr. Kuo-Ming Huang  
Mr. and Mrs. John P. Hynes, Jr.  
Mrs. Alexine Clement Jackson  
Mr. Jon James  
Ms. Erika Jarvi  
Mr. Charles Jenkins  
Mrs. Lori Jenkins and  
Mr. George D. Swygert  
Mrs. Leslie A. Karr  
Mr. Sean Kelly  
Mr. Nolan Kent  
Mr. and Mrs. Frederick T. Kieferle, Jr.  
Ms. Sophia Kim  
Mr. and Mrs. Thomas M. Lawler, Jr.  
Mr. Connor L. Locke  
Mr. and Mrs. Rafat Mahmood  
Mr. Nicholas Marston  
The Honorable and  
Mrs. Raymond McGrath  
Ms. Janet S. McUlisky  
The Dennis Meyer Foundation  
Mr. Buzz Miller  
Mr. Carl Minden  
Mr. Marc Mischkowsky  
Mr. and Mrs. Jon E. Mittelhauser  
Mr. and Mrs. Jerry B. Moore  
Mr. Preston Moore  
Mr. Nathan Morgan  
Ms. Lisa Mortier  
Mr. and Mrs. Arthur H. Nash  
Mrs. Patricia Oxley  
Mr. Augustine Park  
Mr. Loren Peace  
Peterson Family Foundation  
Mr. Daniel Ploch  
Mr. Anthony Podesta  
Mr. Normand Poulin  
Mr. Andrew L. Quan  
Mr. and Mrs. Alfred C. Quenneville  
Mr. and Mrs. Rollie Quinn  
Mr. Glenn Reece  
Mr. Thomas Refenes  
Ms. Andrea R. Roane  
Mr. Timothy Roche  
Mr. and Mrs. Seth D. Rosen  
Mr. Abdulla Saif  
Mr. Andrew Sakai  
Mr. Harold S. Sandahl IV  
Mr. Vinay Sarpeshkar  
Mr. Benjamin Schneider  
Mr. Douglas Schuster  
Mr. Jonathan Shoff  
Mr. and Mrs. Brian K. Shure  
Mr. Sebastian Simon  
Esther Simon Charitable Trust  
Mr. Kristoffer Skar  
Mr. Steven Southall  
Mr. William C. Sprouse  
Mrs. Sharon L. Stark  
The Honorable and  
Mrs. Kenneth W. Starr

Mr. and Mrs. Edward R. Stettinius  
Mrs. Carol Steuart  
Mrs. Marianne Stohlman  
Ms. Barbara A. Stohlman  
Mr. Brian Stringari  
The Honorable Thomas J. Tauke  
Mr. Travis Taylor  
Mr. Manuel R. Teixeira  
Mr. and Mrs. J. Timothy Thompson  
Mr. Carl M. Trevisan  
Mr. David Turch  
Mr. and Mrs. Robert A. Vanderhye  
Mr. Ian Volner  
Mr. and Mrs. D. A. Williams  
Mr. Jonathan Wilson  
Mr. and Mrs. Dave Withers  
Mrs. Jeanne H. Wolak  
Mr. Justin Wong  
Mr. Aaron Wright  
Mr. David Wu  
Mr. Alexander Young  
Ms. Amber Yust

### Organizations

Agir Ltd.  
American Bankers Association  
American Cancer Society  
American University Dance Team  
Amici's Restaurant  
AstraZeneca HealthCare Foundation  
Dovel Technologies, Inc.  
Eureka Restaurant Group LLC  
Fairway Payments, Inc.  
Frontstream  
Greenstein Delorme & Luchs, P.C.  
Groupon, Inc.  
Hartford Fire Insurance Company  
IBM Employee Services Center  
IGH Charitable Foundation, Inc.  
Jack Taylor's Alexandria Toyota  
Kynetic, LLC  
Lindsay Management Company LLC  
Lululemon USA, Inc.  
Manheim, Inc.  
Marathon Oil Corporation  
Mark Krueger & Associates, Inc.  
Middle-Atlantic Section of the PGA  
Passport BMW  
Pepsico Foundation  
Presence Saint Joseph Hospital  
Reason2Race  
Simpson Development, Inc.  
Steele Family Foundation  
Steele Foundation LLC  
Steptoe & Johnson LLP  
Susan G. Komen  
Takeda Pharmaceuticals  
International Co.  
The Charter 100  
TRUIST  
United Airlines  
United Way of Greater Philadelphia &  
Southern New Jersey  
Vanderbilt University Medical Center

Wells Fargo Advisors LLC  
World Bank Community Connections  
Fund

## THE KESHISHIAN SOCIETY

(\$500 to \$999)

*Harold M. Keshishian was a founding board member of the Prevent Cancer Foundation®. His leadership and commitment to Prevent Cancer's mission helped change the landscape of cancer prevention and early detection for generations of individuals affected by cancer.*

### Individuals

Mr. and Mrs. Clarence H. Albright, Jr.  
Mr. Frantz Alphonse  
Mr. Nathan Ames  
Mr. and Mrs. Gary J. Andres  
Mr. Bryce Aona  
Mr. Alder Arts  
Mr. Jim Avery  
Mr. Alexis Bailey  
Mr. Benjamin Bain  
Mr. Brian Balling  
Mr. Steven Barto  
Mr. Michael Barton  
Mr. Matthew Bates  
V. Max Beard/  
Lollee Judd Richardson Trust  
Mr. Joshua Beavers  
Mr. Sibylle Becker  
Mr. Mathieu Bélanger  
Mr. Enrico Bianco  
Mr. John Bidwell  
Mr. Vern Bittner  
Mr. Richard Bogan  
Ms. Jennifer Bogart  
Mr. Tucker Boner  
The Honorable and Mrs. David E. Bonior  
Mr. Mitchell Bontrager  
Mr. Samuel Bowman  
The Dorothy C. Boyce Fund of the  
T. Rowe Price Program  
for Charitable Giving  
Mr. Montre Burton  
Mr. and Mrs. Marvin P. Bush  
Mr. Mike Button  
Mr. Scott Carter  
Ms. Christine Chu  
Mr. David Chuhay  
Mr. Robert Chunn  
Mr. Jerod Collins  
Mr. Christopher Connett  
Mr. Joseph Coombs  
Mr. Nicholas Cote  
Ms. Teresa Couch  
Mr. Jason Dagit  
Mr. Kyle Dailey  
Mr. Nathan Damro  
Mr. and Mrs. Wallace L. Darnelle  
Mr. Elizabeth Daugherty  
Mr. David Davis  
Mr. Dick Davis  
Mr. Henry de Vegvar  
Mr. Jason Degroot  
Mr. and Mrs. E. K. Delph  
Mr. Wayne Denny  
Mr. Kunal Desai  
Mr. Andrew Dice  
Ms. Concetta DiLeo  
Mr. Bryan Donlan  
Mr. Aaron Doukas  
Mr. Mark Eigenbrode  
Mr. Tim Ernsberger  
Mr. and Mrs. Peter Findlay  
Mr. Julius Fleischer  
Ms. Karen Floriglio  
Mr. Jason Flynn  
Mr. David Foglesong  
Ms. Catherine Foltz  
Mr. Paul Fontaine  
Mr. Corey Frang  
Mr. Samuel Friedli  
Mr. Peter G. Gartlan  
Mr. Karl Germanovich  
Mr. Daniel Gerstein  
Mr. Peter Gilbert  
Mr. Adam Gleitman  
Mr. Simon Goldeen  
Mr. and Mrs. Micah S. Green  
Mr. Gerard Green  
Mr. and Mrs. Joseph M. Guiffré  
Mr. Michael Guiffré  
Mr. Mitchell S. Hailey  
Mr. Andrew Hamilton  
Mr. Daniel Hanson  
Mr. Michael Harkins  
Marilyn A. Harris, Ph.D.  
Mr. Michael Harris  
Mr. Taylor Harris  
Mr. Thomas P. Hasbrouck  
Ms. Martha F. Hay  
Mr. Christopher Hayes  
Ms. Stacey Herndon  
Mr. Colin Hill  
Mr. Jason Hinkle  
Mr. Paul Hlebowitsh  
Mr. Ryan Hobbs  
Mr. Gregory G. Hoffmann  
Ms. Michele E. Holt  
Mr. and Mrs. Leo S. Horey III  
Mr. Nathan Hoskins  
Mr. Matt Housh  
Dr. and Mrs. Herbert M. Hughes  
Mr. Patrick Hurston  
Mr. Lucas Itskin  
Mr. Alexis Jacob  
Mr. Franklin Jen  
Mr. Stephen Jezewski  
Mr. and Mrs. Robert C. Jones  
Mr. Randall Jones  
Mr. Malavarayan Kabilan  
Ms. Kristine Kamenstein  
The Honorable and Mrs. Frank Keating  
Mr. Robert Keefe  
Ms. Laurie P. Kelley

Mr. Simon Kenny  
Mrs. Melissa Anne Keshishian  
Mr. and Mrs. Craig Kipe  
Mr. Dave Kirsch  
Mr. Bryan Kowal  
Mrs. Margery Kraus  
Mr. Daniel Kroells  
Mr. Peter Kyrouac  
Mr. John Lawrence  
Mr. Stan Lawson  
The Honorable and  
Mrs. Patrick J. Leahy  
Mr. Richard Lietzau  
Ms. Almir Listo  
Mr. and Mrs. Gerald E. Long  
Mr. Todd Longendelpher  
Mr. William Luciani  
Mr. Dominic Macaluso  
Mr. William MacArthur  
Mr. Aaron Machtay  
Mr. Alexander Malmberg  
Mr. William Mann  
Mr. Nicholas Maragos  
Mrs. Lesley Pate Marlin  
Mr. and Mrs. Patrick J. McCarty  
Mr. Marshall McClure  
Mr. Michael McGuinness  
Mr. Robert L. Menefee  
Mr. Robert Merrill  
Mr. Steven Murray  
Sis Nash Memorial Fund of the  
Hampton Roads Community  
Foundation  
Mr. Paul Nemeth  
Ms. Michael Newton  
Mr. and Mrs. Stuart B. Nibley  
Mr. Bradley Nold  
Mr. Michael O'Beirne  
Ms. Laura O'Neal  
Mr. Jason Oster  
Mr. Jordan Parkin  
Mr. and Mrs. Delbert W. Parsons  
Ms. Elizabeth C. Patti  
Mr. Anthony Pavlak  
Mr. Justin Pendergraft  
Mr. Tito Piccolo  
Mr. Anthony Pogodzinski  
Mr. Paul-André Poulin  
The Honorable Deborah Pryce  
Mr. Theodore Rasmussen  
Mr. and Mrs. Peter B. Reilly  
Mr. William Reznak  
Mr. Davide Ricaurte Cogorno  
Mr. and Mrs. Richard F. Rodgers  
Mr. James Rodriguez  
Mr. Ronald Rosenfeld  
Ms. Lauren Rozells  
Mr. and Ms. Naoki Sakai  
Mr. Haruyoshi Sakai  
Mr. William Sanders  
Mr. Alfredo Sandoval  
Mr. and Mrs. Thomas J. Sargeant  
Mr. Balaji Sarpeshkar  
Mr. Manuel Sarter

Ms. Jenna Schachner  
Mr. Samuel Schetterer  
Mr. Brandon Scott  
Mr. Stephen Scott  
Mr. Matthew Sell  
Dr. and Mrs. Simon H. Serfaty  
Mr. Joseph Sewell  
Ms. Yang Shan  
Mr. and Mrs. C. Stephen Shaw, Jr.  
Mr. Kent Sheldon  
Mr. Michael Shoffeitt  
Mr. Stephen R. Sieke  
Mr. and Ms. Scott A. Sinder  
Mr. and Mrs. James B. Singerling  
Mr. David Sjöström  
Mr. Adam Smith  
Mr. Michael Smith  
Mr. Christopher Smithmyer  
Mr. James Soliman  
Mr. Lucas Spath  
Mr. Felix Spielmann  
Mr. Michael Staib  
Mr. Tommy Stewart  
Mr. Tobias Straßhofer  
Mr. Logan Stromberg  
Mr. Ryan Szydowski  
Mr. Patrick Tandler  
Mr. Adrian Tangsoc  
Friends of John Tanner  
Mr. Robert Tarrell  
Mr. Joshua Teeters  
Mr. and Mrs. Robert J. Test  
Mr. Harry L. Thomas, Jr.  
Mr. Matthew Thorson  
Mr. Seth Timmons  
Mr. JD Tomlinson  
Sami & Annie Totah Family Foundation  
Mr. and Mrs. Stefan Tucker  
Mr. Joe F. Viar, Jr. and  
Ms. Bonnie Christ  
Mr. Christopher Vincent  
Mr. Livio von Büren  
Mr. Matthew Wasserman  
Ms. Jennifer Weiss  
Mr. Joseph West  
Mr. and Mrs. Earle C. Williams  
Mr. Christopher Williams  
Ms. Terese T. Williams  
Mr. Trevor Wilson  
Mr. Adam Wirtala  
Mr. Clinton Woltering  
Mr. and Mrs. Rene R. Woolcott  
Mr. Ramin Wright  
Mr. Sandeep Yarabarla  
Robert C. Young, M.D.  
Mr. Derek Yu  
Mr. Robert Yu  
Mr. Martin Zehetbauer

### Organizations

AEG  
Alloro Collection LLC  
A-Tek, Inc.  
Cancer Support Community



Cantina Marina  
 Capybara Games Inc  
 Cardinal Bank Community Fund  
 D.A. Davidson & Co.  
 eSport.US  
 Fairgrounds LLC  
 Land, Carroll & Blair PC  
 Lemon Twist, Inc.  
 Montana Winery  
 MOTE Management Company, Inc.  
 Network for Good  
 Pint Defiance  
 St. Dominic Savio Catholic High School  
 United Way California Capital Region  
 Worldwide Speakers Group

## THE PITT SOCIETY

(\$250 to \$499)

*Robert H. Pitt was the first chairman of the Foundation's board of directors. His commitment, wisdom and leadership played an instrumental role in the Foundation's growth.*

### Individuals

Mr. Devon Adkisson  
 Mr. Steven Albers  
 Mr. Richard A. Alderson  
 Mr. and Mrs. James G. Aldigé IV  
 Mr. Trent Allen  
 Mr. Daniel Andersen  
 Mr. Trevor Andersen  
 Mr. Zach Anker  
 Mr. Andrew Araki  
 Mr. Joshua Arcilla  
 Mr. Joseph Arnett  
 Mr. Kristian Årvik  
 Mr. Philip Averill  
 Mr. Frederick Baier  
 Mr. Tres Bailey  
 Mr. Dustin Ballard  
 Mr. and Mrs. Charles W. Ballou  
 Mr. Marty Barbella  
 Mr. Christopher Baron  
 Mr. Vincent Barredo  
 Mr. Brandon Bean  
 Mr. and Mrs. Douglas N. Beatty  
 Mr. Bryon Beaubien  
 The Abram C. Becker Fund of In Faith  
 Community Foundation  
 Mr. Ed Beckwith  
 Mr. James Bell  
 Mr. Pontus Bergengren  
 Mr. Brandon Bergren  
 Mr. Richard W. Berman  
 Mr. Adam Berry  
 Mr. Cameron Berry  
 Ms. Michele Blair  
 Mr. James R. Blinka  
 Mr. Stefan Bloomenstein  
 Mr. and Mrs. James E. Boland  
 Mr. Tommy Bolger  
 Dr. Maarten Bosland  
 Mr. Josh Bothun  
 Mr. Michael Bower

Mr. Alexander Bradley  
 Mr. Thomas Breitenfeldt  
 Ms. Jan Bresch  
 Mr. Chase Brown  
 Mrs. C. P. Brownley III  
 Mr. Steven Brudenell  
 Mr. Pierre-Antoine Burdet  
 Mr. Noah Byrd  
 Mr. Tristan Carlson  
 Ms. Ana Caballero Álvarez  
 Mr. and Mrs. Donald R. Calloway, Jr.  
 Mr. Charles S. Caminiti  
 Mr. Nick Carosi  
 Mr. Jonathan Carroll  
 Mr. and Mrs. Michael Catanzaro  
 Ms. Christy Cecil  
 Mr. Donovan Chaffart  
 Mr. David Chialastri  
 Mr. Shane Christen  
 Mr. R. Michael Clark  
 Mr. Stephen B. Clark  
 Mr. Winthrop C. Cobb  
 Mr. Keith Cockerham  
 Mr. H. Colley  
 Mr. Joshua Colvin  
 Ms. Katherine Cronin  
 Mr. Fox Cutter  
 Mr. Paul Cychosz  
 Ms. Diana Dagher  
 Mr. Joseph Daniels  
 Mr. Cedric Davillars  
 Ms. Sharde Davis  
 Mr. Cameron Davison  
 Mr. Lawrence F. Del Pizzo  
 Mr. Gary DeReese, Jr.  
 Mr. Caulley Deringer  
 Mr. Sean DeVarney  
 Mr. Galen Devin  
 Ms. Anne Devlin  
 Mr. Ryan Dixon  
 Mr. Robert Dolan, Jr.  
 Mr. Michael D'Onofrio  
 Mr. Joseph Doran  
 Ms. Elizabeth A. Dorgan  
 Mr. Grégory Dozot  
 Mr. Jérémy Dubut  
 Mr. Richard Duckett  
 Mr. and Mrs. William F. Dunbar  
 Mr. and Mrs. Edward E. Dyson  
 Mr. Hunter Eblen  
 Mr. Erik Edner  
 Mr. Anders Ekermo  
 Mrs. Jeanne Ellinport  
 Mr. Daniel Evoy  
 Ms. Christine Fedenko  
 Mr. Kiev Federowicz  
 Mr. Sigmund Fidyke  
 Mr. J. Douglas Fife  
 Mr. John Fischer  
 Mr. Micah Fitzgerald  
 Mr. Nathan Fitzgerald  
 Mr. Peter G. Fitzgerald  
 Mr. and Mrs. Michael W. Fogarty  
 Mr. Robert Fox

Ms. Barbara Frailey  
 Mr. and Mrs. Grady C. Frank, Jr.  
 Mr. James Freeman  
 Mr. Ken French  
 Mr. Christopher Friedrich  
 Mr. Nick Frigillana  
 Ms. Kari Fry  
 Mr. and Mrs. Roger P. Furey  
 Ms. Barbara L. Furst  
 Mr. Kevin Gadd  
 Mr. Kurt Gallagher  
 Mr. Marcus Garcia  
 Mr. Tim Gauffin Andersen  
 Mr. Bruno Gauthier Goyette  
 Mr. and Mrs. Brian Gibney  
 Mr. Alex Glidewell  
 Mr. Matthieu Glousieau  
 Mr. Jordan Godard  
 Mr. Charles Goldhaber  
 Mr. Franck Goudard  
 Mrs. Susan M. Gould  
 Mr. Nickolas Grages  
 Mrs. Nancy M. Gray  
 Mr. Adam Grenier  
 Mr. and Mrs. Michael C. Gribbon  
 Mr. Shannon Gugarty  
 Mr. Mattias Gunnarsson  
 Ms. Arin Gutu  
 Mr. and Mrs. Charles C. Habliston IV  
 Mr. Thomas Hahn  
 Mr. James Hanlon  
 Mr. Patrick Hansen  
 Mr. and Mrs. Bertrand M. Harding, Jr.  
 Ms. Therese Hathaway  
 Mr. Steven Heid  
 Mr. Scot Hendricks  
 Mr. Sebastian Hentschel  
 Ms. Jani Hilkamo  
 Mr. John Hischer  
 Mr. and Mrs. Caswell O. Hobbs III  
 Mr. Albin Hofmeijer  
 Mr. Patrick Hogg  
 Mr. Scott A. Holbrook  
 Mr. Christopher Holloway  
 Mr. Samuel C. O. Holt  
 Mr. and Mrs. William E. Hoover, Jr.  
 Mr. and Mrs. Francis J. Hopke  
 Mr. Jonathan Horner  
 Ms. Toni Illgen  
 Ms. Fatima Iqbal  
 Mr. Jason Jack  
 Mr. Scott Jackman  
 Mr. Thomas Jackson  
 Ms. Sara Jackson  
 Mr. John M. Joerger, Sr.  
 Mr. Alex Johnson  
 Mr. Richard Johnson  
 Mr. David Jones  
 Mr. Cyril Kamowski  
 Mr. John Kearsley IV  
 Mr. Ben Keilty  
 Mr. Max Kielcz  
 Mr. Andrew King  
 Mr. Maxwell Kotre

Mr. John Krucik  
 Mr. Kevin Kühn  
 Mr. Davis Kummli  
 Mr. Ryan LaBelle  
 Mr. Rex Lacy  
 Mr. David Lampenscherf  
 Mr. Yoav Landau  
 Mr. John Lankau  
 Mr. Andrew LaPier  
 Mr. James LaPlant  
 Mr. Will Larsen  
 Mr. and Mrs. Rodney Lawrence  
 Mr. Jerry Layton  
 Mr. Amy Lee  
 Mr. Theodore R. Legler  
 Mr. Phil Leick  
 Mr. Matthew Leonard  
 Ms. Caitlin Leu  
 Mr. Clinton Lexa  
 Mr. Jakob Linde  
 Mr. Andrew Lindsay  
 Mr. Robert F. Logan  
 Mr. James Patrick Marren  
 Mr. Thorge Martens  
 Mr. and Mrs. Darren Martian  
 Mr. Jaime Alejandro Martinez Muñoz  
 Mr. Cody Massin  
 Mr. James J. Matthews, Jr.  
 Mr. Joseph Maxwell  
 Mr. Ryan McGraw  
 Mr. Michael McLaughlin  
 Mr. Tim McLennan  
 Mr. and Mrs. John J. McMackin, Jr.  
 Mr. and Mrs. Stephen D. McMillan  
 Mr. Robert McNish  
 Mr. and Mrs. Tony Meagher  
 Mr. Gus Mendoza  
 Mr. Jeffrey S. Mezera  
 Dr. and Mrs. Wayne Minami  
 Ms. Joanne Minnihan  
 Mr. Donald Mitchell  
 Mr. Eric S. Montalvo  
 Mr. Eric Moore  
 Mr. Quentin Morel  
 Mr. Michael Morgan  
 Mr. Jonathan Morrisette  
 Mr. Ramaswamy Murari  
 Mr. Jonathan Murphy  
 Mr. Daniel Murray  
 Mr. Ryan Myers  
 Mr. Michael Neligh  
 Mr. Michael Neumann  
 Mr. Matt Nevels  
 Mr. Andy Nibley  
 Mr. Brian Nickerson  
 Mr. Philip Michael Nielsen  
 Mr. Robert Nix  
 Mr. Max Nordlund  
 Mr. Josh Norton  
 Mr. Cody Noyes  
 Mr. Charles P. O'Connor  
 Mr. Nick Olivas  
 Mr. Eryk Olney  
 Mr. Chris O'Rourke

Mr. Daniel Ortosky  
 Mr. Adrian Packer  
 Mr. Joseph Anthony Parrott III  
 Mr. Kyle Paulsen  
 Mr. Brian Peck  
 Mr. Alexandre Penfield  
 Mr. David Petroni  
 Mr. Mark Pielemeier  
 Mr. Dalton Pierce  
 Mr. Timothy Pittman  
 Mr. Antonio Portis  
 Mr. Adam Poulter  
 Mr. Naram Qashat  
 Mr. Alexandre Queant  
 Mr. Michael Quinlan  
 Mr. Dan Radaj  
 Mr. Raymond Ramos  
 Mr. Jack Rand  
 Mr. Andrew Rayburn  
 Mr. Anthony Paul Raymond  
 Ms. Deborah Reeves  
 Mr. Thomas L. Regnell  
 Mr. and Mrs. Terrence E. Reideler  
 Mr. Myke Reiss  
 Mr. Willem Renzema  
 Mr. Dylan Repole  
 Mr. Gordon Reynolds  
 Ms. Mariel Reynolds  
 Mr. Christopher Rice  
 Mr. and Mrs. Thomas E. Riley  
 Mr. Aaron Ritter  
 Mr. Jennifer Ritz  
 Mr. Geoffrey Riutta  
 Mr. Stephan Roberts  
 Mr. William Robitske  
 Ms. Sandra T. Rodriguez  
 Mr. Everett G. Roehl  
 Mr. Jeremy Roman  
 Mr. Chris Romeo  
 Mr. Alexis Romero Frenzel  
 Mr. Adam Rosenfield  
 Mr. and Mrs. Donald Rothblatt  
 Mr. and Mrs. Clifford H. Routh  
 Mrs. Laurance P. Runyon, Jr.  
 Mr. Steven Schalek  
 Mr. Richard Scheer  
 Mr. Justin Scheimo  
 Mr. Stephen Schiber  
 Mr. Hayden Schiff  
 Mr. Christian Schumacher  
 Mr. Douglas Schwartz  
 Mr. Chris Scott  
 Mr. and Mrs. Thomas A. Scully  
 Mr. Nicholas Shaw  
 Mr. Colin Shea  
 Mr. Jarrod Sherwin  
 Mr. Timothy Shook  
 Mr. and Mrs. Robert B. Shue  
 Mr. Ethan Simpson  
 Mr. Lukas Sizemore  
 Mr. Andreas Slotte  
 Ms. Rachel Southall  
 Mr. Rob Speer  
 Mr. Kevin Spicer

Mr. Brian Scott Spitzer  
 Mr. Joseph G. Spitzer  
 Mrs. Joyce A. Spracklen  
 Mr. Jan H. St. Croix  
 Mr. Roy T. Starry, Jr.  
 Mr. Kyle Stegner  
 Mr. Hayden Stephenson  
 Mr. Michael Stewart  
 Mr. Michael Stigall  
 Mr. John A. Stipicevic  
 Mr. Richard Stohman, Jr.  
 Mr. Scott Surridge  
 Mr. Justin Svetlik  
 Mr. Corey Tallman  
 Ms. Collette Tamez  
 Mr. William P. Thomas  
 Mr. Cole Thompson  
 Mr. Nicholas Thompson  
 Mrs. Dolores M. Timmons  
 Mr. Joshua Tolliver  
 Mr. Patrick Toro  
 Mr. Brendon Tower  
 Ms. Marcella Townsend  
 Mr. Peter Tran  
 Mr. Gregory Trawinski  
 Ms. Cynthia Merifield Tripodi  
 Mr. Matthew Tropiano  
 Ms. Diane Tsimberova  
 Mr. Andrew Tudor  
 Mr. Rick Underhill  
 Mr. Thomas Vazquez  
 Mr. Caleb Veenstra  
 Mr. Yohann Verges  
 Mr. Jens Verhoeven  
 Mr. Jonas Verstrepen  
 Mrs. Marisa Vertrees  
 Mr. Anthony Viteritti  
 Mr. William F. Vosbeck  
 Mr. and Mrs. Don Walker  
 Mr. Mitchell Walker  
 Mr. Tyler West  
 Mr. and Mrs. Mark A. White  
 Mr. Adam Wick  
 Mr. James Williams  
 Mr. Jon W. Williams, Jr., D.D.S.  
 Mr. Aron Willms  
 Mr. Chad Wilson  
 Mr. Emanuel Waschitz  
 Mr. Andrew Woolston  
 Mr. Donald L. Wright  
 Mr. Andrew Yates  
 Ms. Katie Yuill  
 Mr. Scott Zadician  
 Mr. Stuart Zellin  
 Mr. Jonathan Zuo

#### Organizations

AGUA 301  
 AmazonSmile  
 CienaCares  
 The Common Table  
 Deckerville Community Hospital  
 Give With Liberty Employee Donations  
 Grill Concepts, Inc.

IBM Retiree Charitable Campaign  
 Jamison & Sullivan, Inc.  
 Neusolis, LLC  
 Silicon Valley Community Foundation  
 United Way of Houston  
 Valley of the Sun United Way

## BENEFICIARY EVENTS

*Individuals and organizations select the Prevent Cancer Foundation® to be the beneficiary of funds raised through events they organize and host. Beneficiary events vary in size and type, and include everything from lemonade stands, art shows, water ski competitions and online video games, to fantasy football and silent auctions.*

Abigail's Birthday Day  
 Alive Again Fashion Show  
 Awesome Games Done Quick 2016  
 Breakway from Cancer  
 Major Saviors  
 Charity Limestream  
 CrossFight Against Cancer  
 Deckerville Community Hospital Run  
 Dress-Down Day  
 ESport Gaming  
 Federal Practice Happy Hour  
 Frank J. Romano Foundation's Rock & Run 5k  
 Hyperdrive for Cancer Awareness  
 In Memory of Elma Pugh  
 Lemon Twist, Inc.  
 Manheim, Inc. Pumpkin Carving Contest  
 Maya's Typhoon Triathlon  
 Middle-Atlantic PGA  
 No-Shave November  
 Rate Your Beautician Basketball Tournament  
 Sober October  
 Teespring, LLC  
 VP Racing Fuels, Inc.  
 Wisconsin Poker Run

## IN-KIND DONORS

*The following donors have supported the Prevent Cancer Foundation® with in-kind gifts and services during the year.*

#### Individuals

Her Excellency,  
 the Ambassador of Ireland,  
 Anne Anderson  
 His Excellency,  
 the Ambassador of Italy,  
 and Mrs. Bisogniero  
 Her Excellency,  
 the Ambassador of Liechtenstein,  
 Claudia Fritsche  
 Her Excellency,  
 the Ambassador of Monaco,  
 Maguy Maccario Doyle  
 His Excellency,  
 the Ambassador of Portugal,  
 and Mrs. Vital

His Excellency,  
 the Ambassador of the  
 Russian Federation,  
 Sergey Kislyak

His Excellency,  
 the Ambassador of Singapore,  
 Ashok Kumar Mirpuri

His Excellency,  
 the Ambassador of Switzerland,  
 and Mrs. Dahinden

Mr. and Mrs. James G. Aldigé III

Mr. and Mrs. Bruce Allen

Mr. Andrew Baroch

Ms. Catherine P. Bennett and  
 Mr. Fred Frailey

Mr. Peter J. FitzGerald, Jr.

Mr. and Mrs. Craig Fuller

Ms. Teri Galvez and Mr. Michael Cleary

Mr. and Mrs. Bruce A. Gates

Ms. Stefanie Harrington

Ms. Liz Lindstrom

Ms. Deborah Lowham

Mr. Frank Mermoud and Mr. Ned  
 Shannon

Mr. and Mrs. Philip A. Odeen

Ms. Andrea R. Roane

The Honorable Pat Roberts

Mr. David Tutera

Mr. and Mrs. D. Anderson Williams

#### Organizations

Affordable Signs  
 Alton Lane  
 Arena Stage  
 Athena Water  
 Cafe Deluxe  
 College Hunks Hauling Junk  
 Design Cuisine  
 The Dylan Amsterdam  
 ESPN, Inc.  
 Flywheel Sports  
 Hermès of Paris Incorporated  
 The Inn at Little Washington  
 Irene Abdou Photography  
 JetBlue  
 Kendra Scott Jewelry  
 Kramer Portraits  
 Lansdowne Resort  
 L'Auberge Chez Francois  
 Montana Winery  
 Moulin Rouge  
 Reston Limousine  
 Ristorante Tosca  
 Robert's Grove Beach Resort  
 Shakespeare Theatre Company  
 Singing Sands Inn  
 Southwest Airlines Co.  
 Subway  
 Toscana Saporita Cooking School  
 Total Wine and More  
 Tyson's Pilates  
 Washington Kastles  
 Washington Redskins  
 Whole Foods Old Town



# STATEMENT OF FINANCIAL POSITION

FOR THE YEAR ENDING JUNE 30, 2016

## ASSETS

### CURRENT ASSETS

Cash and Cash Equivalents	2,256,360
Accounts and Pledges Receivable	275,886
	<b>2,532,246</b>

### INVESTMENTS

General	3,073,272
Donor Restricted and Board Designated Funds	5,924,287
	<b>8,997,559</b>

### PROPERTY

Office Furniture and Equipment	149,885
Accumulated Depreciation	-52,597
<b>Total Property Assets</b>	<b>97,288</b>

### OTHER ASSETS

Prepaid Expenses	49,541
Deposits	46,346
Charitable Gift Annuities	189,056
Interest in Remainder Trusts	433,246
Deferred Compensation Plan	188,698
	<b>906,887</b>

**Total Organization Assets** **12,533,980**

## LIABILITIES

### CURRENT LIABILITIES

Accounts Payable and Accrued Expenses	248,321
Deferred Income	-
Grants Payable	822,884
	<b>1,071,205</b>

### LONG-TERM LIABILITIES

Deferred Rent	49,875
Charitable Gift Annuities	57,791
Deferred Compensation	188,698
	<b>296,364</b>

**Total Liabilities** **983,760**

### NET ASSETS

Unrestricted	8,374,290
Temporarily Restricted	2,513,708
Permanently Restricted	278,413
	<b>11,166,411</b>

**Total Liabilities and Net Assets** **12,533,980**

# STATEMENT OF ACTIVITIES AND CHANGES IN NET ASSETS

## SUPPORT AND REVENUE

Contributions	2,840,421
Bequests and Other Income	507,773
Investment Loss	(29,197)
In-kind Contributions	127,167
Special Events	2,952,616
Less: Costs of Direct Benefit to Donors	(312,968)
<b>Total Support and Revenue</b>	<b>6,085,812</b>

## EXPENSES

Programs	
Research	1,289,760
Education and Public Awareness	2,395,950
Community Outreach	992,146
Management and General	486,767
Fundraising	974,609
<b>Total Expenses</b>	<b>6,139,232</b>

Change in Net Assets	(53,420)
Net Assets, Beginning of Fiscal Year	11,219,831
<b>Net Assets, End of Year</b>	<b>11,166,411</b>



### Expenses by percentage

- 39% Education and Public Awareness
- 21% Research
- 16% Community Outreach
- 16% Fundraising
- 8% Management and General



*Stop Cancer Before It Starts!®*

1600 Duke Street, Suite 500  
Alexandria, VA 22314

Phone: 703.836.4412

Fax: 703.836.4413

Toll-free: 800.227.2732

[www.preventcancer.org](http://www.preventcancer.org)