

Stop Cancer Before It Starts!®



2017 ANNUAL REPORT



Stop Cancer Before It Starts!®

SENIOR STAFF

Carolyn R. Aldigé
President and Founder

Jan Bresch
Executive Vice President
Chief Operating Officer

Karen Peterson, Ph.D.
Vice President of Programs

Lisa Berry
Managing Director, External Affairs

Janet Hudson
Managing Director, Development

Lisa M. McGovern
Executive Director, Congressional Families
Cancer Prevention Program®

Amy Sokal
Managing Director, Finance and Administration

TABLE OF CONTENTS

The Prevent Cancer Foundation® is the only U.S. nonprofit focused solely on cancer prevention and early detection. Founded in 1985, the Foundation has catapulted cancer prevention to prominence and fulfills its mission through research, education, outreach and advocacy.

| | |
|----|--|
| 2 | LETTER FROM THE PRESIDENT AND CHAIRMAN |
| 3 | OUR STORY |
| 4 | WHY WE'RE HERE |
| 6 | INSPIRING A NEW GENERATION OF RESEARCH RESEARCH AWARDEES |
| 10 | EDUCATION CONGRESSIONAL FAMILIES <i>THINK ABOUT THE LINK®</i> |
| 14 | THE FOUNDATION'S CONVENING POWER <i>DIALOGUE FOR ACTION®</i> |
| 16 | OUTREACH COMMUNITY GRANTS MAMMOVAN <i>¡CELEBREMOS LA VIDA!</i> |
| 18 | OUR GLOBAL REACH TECHNICAL FELLOWSHIPS |
| 20 | ADVOCACY |
| 22 | SUPPORT ANNUAL SPRING GALA 5K WALK/RUN AND HEALTH FAIR AWESOME GAMES DONE QUICK |
| 26 | BOARD OF DIRECTORS |
| 28 | MEDICAL ADVISORY BOARD SCIENTIFIC REVIEW PANEL |
| 30 | WAYS TO GIVE DONOR SPOTLIGHT |
| 32 | OUR DONORS |
| 44 | FINANCIAL STATEMENT |

Dear Friends,

This year, early detection and prevention strategies are more important than ever.

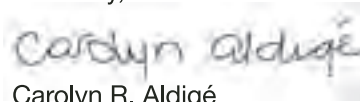
While the debate over health care in the U.S. Congress continues, the fact remains that prevention and early detection reduce health care costs and save lives.

For more than 30 years, the Prevent Cancer Foundation® has been leading the charge to make prevention and early detection the primary drivers in reducing cancer incidence and death—and we have never been more committed to that mission.

With your support, we will continue to fund groundbreaking research, education campaigns and service programs, while going deeper into our local communities than ever before to deliver prevention and screening services to the underserved.

Thank you for your support of all we have accomplished this year. We look toward the Foundation's future with optimism and enthusiasm.

Sincerely,



Carolyn R. Aldigé
President and Founder



Scott McIntyre
Chairman of the Board

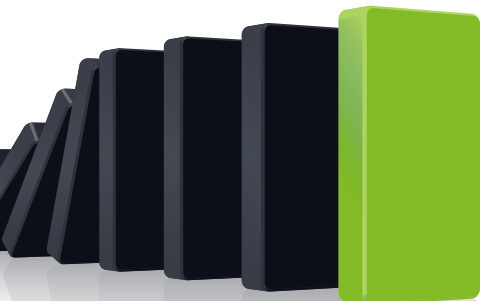
“For more than 30 years, the Prevent Cancer Foundation® has been leading the charge to make prevention and early detection the primary drivers in reducing cancer incidence and death—and we have never been more committed to that mission.”



Carolyn “Bo” Aldigé
President and Founder



Scott McIntyre
Chairman of the Board



Our story

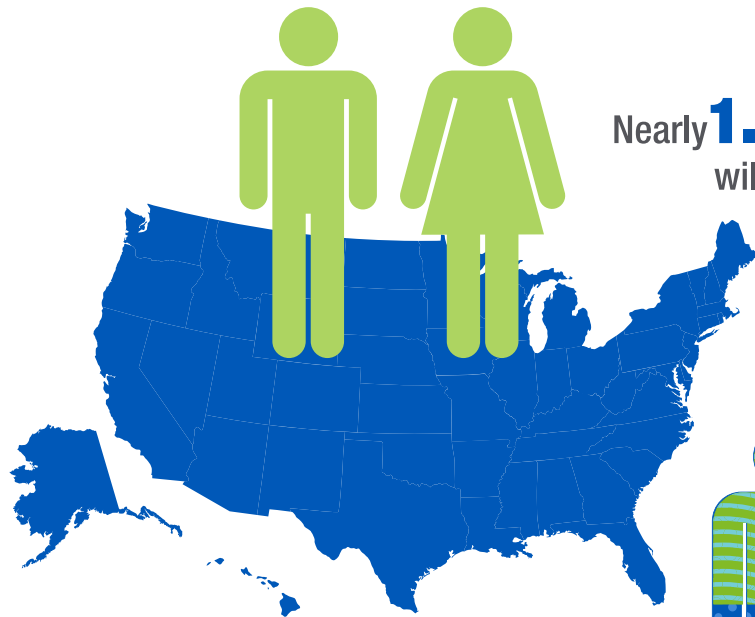
WHO WE ARE...

We are volunteers, advocates, caregivers, survivors, researchers and donors. Together we are working to *Stop Cancer Before It Starts!*®

Cancer prevention and early detection are at the core of our mission—and it is that mission which connects and strengthens us as we serve communities across the nation and around the world. We educate the public on healthy lifestyles and the importance of vaccinations, regular screenings and knowing your family history; we provide people with lifesaving information and direct service programs; we advocate for policies and regulations that advance cancer prevention and early detection and make services more accessible to all populations and we continue to fund cutting-edge cancer research. Our values and our mission fuel our work at the Prevent Cancer Foundation® and we are proud of the work we do.

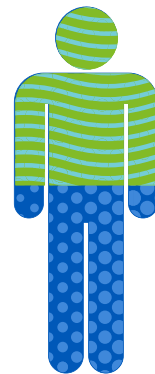


WHY WE'RE HERE




Nearly **1.7 Million Americans**
will be diagnosed with cancer this year

More than **600,000 will die**



Up to **50% of cancer cases**
and about **50% of cancer deaths**
are preventable with what we know right now



Research suggests that only five to ten percent of cancers are hereditary. That means the non-inherited causes of cancer—the lifestyle choices we make, the foods we eat and our physical activity levels—have a direct impact on our overall cancer risk.

INSPIRING A NEW GENERATION OF RESEARCH

Since 1985, you have funded innovative cancer research on prevention and early detection, enabling the Foundation to award grants and fellowships to hundreds of scientists from leading academic medical centers across the country. This year's grantees are an exceptional group, pushing the envelope of science and technology.



Grantee: Leah Frerichs, Ph.D.

Named Award: Marvin Davis Estate

Institution: The University of North Carolina at Chapel Hill, Chapel Hill, NC

Project Title: A randomized trial of an American Indian colon cancer screening strategy

American Indians are the only U.S. racial or ethnic group who has not had decreases in colorectal cancer cases and deaths. Dr. Frerichs' research project will test a culturally-sensitive multimedia video designed to overcome literacy and cultural barriers to improve colorectal cancer screening among American Indians.



Grantee: Jo Freudenheim, Ph.D.

Named Award: Richard C. Devereaux Grant

Institution: The Research Foundation for The SUNY on behalf of University at Buffalo, Buffalo, NY

Project Title: Effects of electronic cigarette use on the human lung

Smoking greatly increases lung cancer risk. Electronic cigarettes (e-cigs) are increasingly being used for smoking cessation and by people who have never smoked. Biological effects of e-cigs are not known. Dr. Freudenheim will study lung tissue from healthy young adults, smokers, never smokers and e-cig users.



Grantee: Rosa Munoz Xicola, Ph.D.

Named Award: Figdor Family Grant

Institution: Yale University School of Medicine, New Haven, CT

Project Title: New DNA repair alterations in hereditary cancer development

Patients with undefined cancer disorders that seem to be inherited tend to have a very high risk of developing cancer at young ages. Dr. Munoz Xicola will work to identify their molecular causes, which will allow us to tailor health care measures to prevent new diagnoses and provide adequate treatment to patients and family members.



Fellow: Rajesh Panigrahi, Ph.D.

Named Award: Figdor Family Fellowship

Institution: University of Massachusetts Medical School, Worcester, MA

Project Title: A virus-like particle vaccine for prevention of Epstein-Barr virus (EBV) associated cancer

Despite the enormous success of virus-like particle (VLP) vaccines that safely prevent hepatitis B virus and human papillomavirus (HPV) associated cancers, no EBV vaccine is licensed. EBV, a major human tumor-causing virus, cannot form VLP vaccines. Using a novel fusion platform, Dr. Panigrahi's research team developed an EBV-VLP candidate for cancer prevention and aims to develop an EBV vaccine that safely stimulates protective immunity to eliminate infection and cancer.

INSPIRING A NEW GENERATION OF RESEARCH

Each year, the Foundation receives scores of grant proposals from promising scientists doing remarkable work in fighting cancer. Each proposal is carefully peer-reviewed through a process similar to that of the National Institutes of Health. Funding is approved by the Foundation's Board of Directors. Your donations mean we can support more talented scientists who are working to ***Stop Cancer Before It Starts!***[®]



Grantee: Brian Rood, M.D.

Named Award: Sarah Howard Childhood Cancer Fund for Our Children's Health Grant

Institution: Children's Research Institute, Washington, D.C.

Project Title: Medulloblastoma risk and the germline foundation of predisposition

Microsatellites are DNA markers that associate non-randomly with disease states and can influence the function of nearby genes. Dr. Rood will work to identify medulloblastoma-specific microsatellite genotypes, which will provide the ability to predict the relative risk of individuals and yield insight into potential preventive strategies.



Grantee: Matthew Stachler, M.D., Ph.D.

Named Award: Marcia and Frank Carlucci Charitable Foundation Grant

Institution: Brigham and Women's Hospital, Inc., Boston, MA

Project Title: Genomic features associated with cancer development in Barrett's biopsies

Despite a known precursor and screening, most esophageal cancers are not detected early and are incurable. Dr. Stachler's research team aims to determine the genomic differences in the precursor between people who do and do not get cancer, in order to develop markers of disease progression for early detection and treatment.



Grantee: Kymberle Sterling, Dr.PH., M.P.H.

Institution: Georgia State University Research Foundation, Inc., Atlanta, GA

Project Title: The little cigar and cigarillo photovoice feasibility project

Little cigar and cigarillo (LCC) smoking has increased, particularly among African-American youth. Cigar use increases the risk of developing cancer. Dr. Sterling's research will assess factors that can prevent the initiation of LCC smoking.



Grantee: Zhenyu Zhong, Ph.D.

Named Award: Prevent Cancer Foundation Board of Directors Research Fund

Institution: University of California, San Diego, San Diego, CA

Project Title: Prevention of obesity-induced HCC by inhibition of sterile inflammation

Obesity promotes the development of liver cancer, however, the underlying mechanism remains elusive. Dr. Zhong will investigate how obesity induces liver inflammation and cancer development, and will promote the development of new preventive strategies for obesity-associated liver cancer.

“The Fellowship grant I received from the Prevent Cancer Foundation was the first grant I received. I credit it with providing the crucial support I needed to establish myself, and my current research program is built entirely on the work I performed during my Fellowship.”

**—Karen Sfanos, M.D., Ph.D.
Johns Hopkins University**

EDUCATION

The Congressional Families Cancer Prevention Program® is a bipartisan network of spouses of members of the House, Senate, administration, Supreme Court and diplomatic community who share an interest in advancing cancer prevention, early detection and education.

The Program regularly hosts seminars and events that bring together members and spouses with health professionals and medical experts, creating dialogue and equipping them with the tools to bring the message of cancer prevention and early detection back to their communities and constituents.

The Program held its 24th Annual Action for Cancer Awareness Awards Luncheon on September 22, 2016. The event recognized congressional spouse Pat Mica (wife of Rep. John Mica, FL.), Olympic medalist Summer Sanders and journalist Amy Robach (“Good Morning America”) for using their platforms to educate the public about cancer prevention and screening. Nearly 50 congressional and diplomatic spouses and more than 25 members of the House and Senate joined leaders in the cancer community for the bipartisan event.



(L to R) Summer Sanders, Carolyn Aldigé, Amy Robach, Pat Mica, Paula Zahn and Lisa McGovern





“I was very uninformed when I was first diagnosed with hepatitis C. Now I feel it’s important to offer as much information as possible to those who may be shy or ashamed of having contracted this virus.”

Alejandro Escovedo
Hepatitis C survivor
Mexican-American singer/songwriter
Think About the Link® spokesperson



“I believe knowledge is power. What happened to me is now preventable—and we need to educate our communities about the link between HPV and cancer.”

Marissa Jaret Winokur
Cancer survivor
Actress and Tony Award winner
Think About the Link® spokesperson



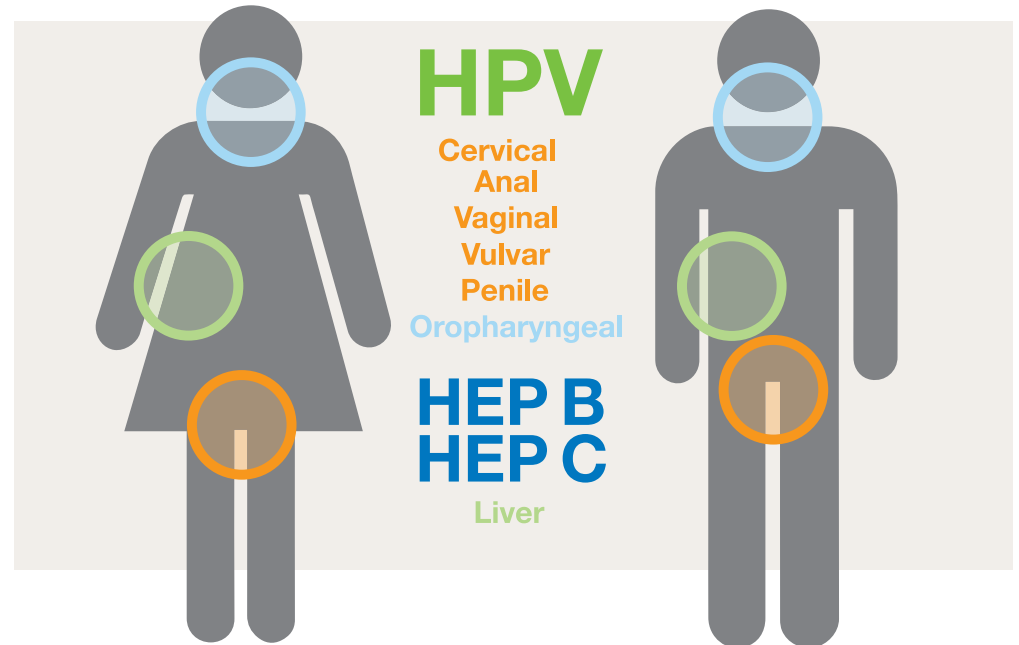
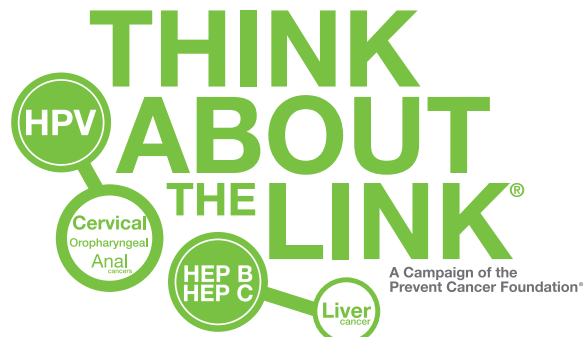
EDUCATION

Think About the Link® is a prevention and education campaign from the Prevent Cancer Foundation® about the connection between viruses and cancer.

Hundreds of thousands of people in the world suffer from cancers caused by viruses and millions more suffer from the viruses that cause them. *Think About the Link*® raises awareness of the link between human papillomavirus (HPV), hepatitis B, and hepatitis C and the many cancers they can cause.

This year, *Think About the Link*® launched a national public service campaign, partnered with Scholastic to reach thousands of parents about the importance of getting their kids vaccinated for HPV, and traveled to high-risk communities to spread awareness and vaccinate, screen and treat disparate populations for hepatitis B and C.

To learn more, visit ThinkAboutTheLink.org





For hundreds of women in rural Appalachia, the *Think About the Link*® health fair, in partnership with the College of American Pathologists in Norton, Virginia, was the only health care they received all year. The fair drew hundreds of women and families from Virginia, West Virginia, Kentucky and Tennessee, and provided cervical and breast cancer screenings; HPV, bone density and diabetes testing; and health education for the whole family. One out of every three women at the Norton health fair had abnormal test results and received treatment at no cost within days. Test results were provided the same day, and when treatment was needed, an immediate care plan was designed and provided by doctors.



“I was afraid to come today because I’ve had this bad pain and discharge for a couple of months and knew I had cervical cancer. But the doctors told me it’s a yeast infection. They gave me medicine—free—and I have an appointment to come back. Thank you!”



Dr. MaryLynn Ostrowski

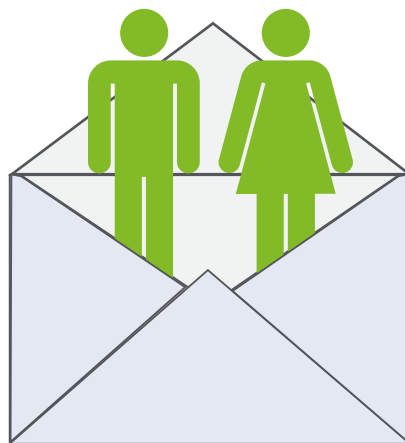
THE FOUNDATION'S CONVENING POWER

The Prevent Cancer Foundation® has used its extraordinary convening power to create shared dialogue and bring to the forefront groundbreaking new research in cancer prevention and early detection. With your help, we've done it time and time again, and we're not stopping here.

Dr. MaryLynn Ostrowski, Executive Director of the Aetna Foundation, delivered the keynote address at the 2017 *Dialogue for Action*® and gave a powerful assessment on the social determinants of health and why your zip code is more predictive of your health than your genetic code. "Social determinants vary between communities across the country and can ultimately end up affecting health and longevity," said Dr. Ostrowski. "By addressing the health and wellness of all communities, we improve how long and how well people live in their local communities across the nation." Social determinants of health include access to transportation, housing, education and community safety, just to name a few.

"By addressing the health and wellness of all communities, we improve how long and how well people live in their local communities across the nation."

— Dr. MaryLynn Ostrowski
Executive Director, the Aetna Foundation



Your
Zip Code
is more important than your
Genetic Code



Dialogue for Action®

Dialogue for Action® is an annual national conference that brings together a diversity of stakeholders, including primary care physicians, patient navigators, social workers, researchers and other medical professionals, to discuss the best ways to support cancer screening, prevention and risk reduction initiatives in their communities.

The Foundation's 19th annual *Dialogue for Action*® took place in McLean, Virginia on April 19-21, 2017. The conference included panels and break-out sessions on topics such as prevention initiatives to reduce health disparities, research trends and advancements in cancer prevention and early detection, developments in imaging for cancer screening, updates on screening guidelines, global prevention and early detection and much more.

This year's participants came from 35 states, nine American Indian/Alaska Native agencies and organizations, the District of Columbia, Puerto Rico, Guam, Nigeria and Tunisia.

Dr. Roy J. Duhé, University of Mississippi Medical Center

"I am much more aware of the screening protocols and categories, and best of all, I now understand why the age groups are significant in who gets screened and who doesn't. This information can now be passed on to my patients."

– *Dialogue* 2017 participant



"We plan to enact a better program for cancer screening and prevention in Tunisia. The types of cancer discussed at the Dialogue are some of the most prevalent and deadly in our country."

**— Dr. Amna Khalfaoui
Tunisian Association for Defending the Right to Health
Dialogue 2017 participant**

OUTREACH

Community Grants

Organizations across the country and around the globe are doing extraordinary work to get at-risk communities the education and screenings they need to prevent cancer or detect it early.

This year, 10 projects ranging from Honolulu to Reading, Pennsylvania, received grants of \$25,000 each to provide cancer prevention education and early detection services for underserved populations.

Meanwhile, international community grants were given to groups in Ghana, Kenya and Mozambique, where cervical cancer is often diagnosed in advanced stages. A grant was also awarded to an organization working to assure high-quality lung cancer screening worldwide and establish a standard for image quality across 40 international screening sites.

You can help ensure more community grants like these go to programs that make a real difference in the lives of our neighbors and our friends around the world.

Top right: The CHOW Project in Hawaii received a \$25,000 grant and is implementing a hepatitis B education program with the goal of testing at least 250 at-risk Pacific Islanders. The project will link those who test positive for the virus with hepatitis B care coordinators, who will ensure they get necessary medical care and treatment to prevent liver cancer.

Bottom right: The Save My Mother project is focusing on the prevention, screening and treatment of cervical cancer among women in Ghana. With the Foundation's \$25,000 grant, the goal of the project is to screen 5,000 women at risk of cervical cancer and create awareness of cervical cancer among 30,000 men and women. The project will utilize stakeholder partners to provide necessary follow-up care and treatment.

**\$540,000 awarded in
Community Grants in 2017**



An international community grant was awarded to the **Radiological Society of North America** for their project to assure high-quality lung cancer screening worldwide. Working with 40 international lung cancer screening sites, the goal is to establish a standard for image quality across numerous international screening sites. To meet this goal, a novel image certification protocol will be implemented at sites performing low-dose computed tomography (CT) lung cancer screening. Global certification is made feasible with the use of cloud-based tools, crowd-sourced data and a low-cost image quality assessment phantom.

“This is a very important project to get a high bar set for quality in quantitative imaging for lung cancer screening.”

— James L. Mulshine, M.D.
Vice-Chairman, Scientific
Director, Prevent Cancer
Foundation®

More than 20 years of Foundation funding for the Mammovan

Recognizing that Washington, D.C. has the highest state-level breast cancer mortality rate in the country, you have enabled us to provide funding for the George Washington University Breast Care Center's mobile mammography unit—the Mammovan. The van provides free mammograms to women who otherwise might not have access to screenings in D.C., Maryland and Northern Virginia community centers, clinics and churches. Since the program's inception in 1996, your support has increased access to mammography services among minorities, low-income communities and the uninsured. Additionally, the program works to ensure that every woman with abnormal results receives a follow-up diagnosis and treatment, regardless of her ability to pay.



¡Celebremos la Vida!

“God bless all of you, especially to the *¡Celebremos la Vida!* program and people that make possible this kind of service, which saves our lives year by year.”
— Program participant

Since 1994, *¡Celebremos la Vida!* (Let's Celebrate Life!) has been providing breast and cervical cancer education and screening to medically underserved Hispanic women in the Washington, D.C. area. *¡Celebremos la Vida!* ensures participants receive free/low-cost comprehensive education and screening in a setting that is culturally appropriate and nurturing. Without this access and support network, many of these women would suffer from a lack of confidence in navigating breast/cervical cancer screening and possible cancer care needs. Your donations will continue to make this program a success and will carry it forward another 25 years.

OUR GLOBAL REACH

Thanks to your help, the Prevent Cancer Foundation's reach extends around the globe.

The Foundation funds Technical Fellowships, focusing on the international exchange of knowledge to enhance skills in cancer prevention and early detection. The program was initiated through a partnership with the Union for International Cancer Control (UICC), an international non-profit organization. The fellowships allow health care professionals from around the world to learn new techniques and skills in the early detection and treatment of cancer at top research and cancer institutes that can be applied in the fellows' home institutions upon their return.



Prof. Fabrizio d'Adda di Fagagna

IFOM, Fondazione Istituto
FIRC di Oncologia Molecolare
Milan, Italy

Area of study: Diet in the prevention of telomere dysfunctions

Host Institution: University of Southern California, U.S.

Purpose: Diet has an impact on health and longevity. Professor d'Adda di Fagagna will study with a lab at the University of South California (USC) on dietary restriction, such as short-term starvation or low calorie diets, to modulate life spans and age-associated diseases.



Dr. Sonali Susmita Nayak

Tata Memorial Centre
Visakhapatnam, India

Area of study: Cervical cancer screening

Host Institution: Houston Methodist Hospital, U.S.

Purpose: Cervical cancer is one of the most common cancers in women worldwide and has an even higher rate of incidence in countries like India. Seventy percent of the Indian population resides in rural India, so increased screening programs and adequate infrastructure in these areas would help reduce cancer rates. Dr. Nayak plans to study at the Houston Methodist Hospital in order to acquire the skills in cervical testing with the goal of applying these skills in rural India.



Dr. Mario González

Universidad Nacional de Colombia
Colombia

Area of study: Ovarian cancer and NSAIDs

Host Institution: Queen Mary, University of London, U.K.

Purpose: In several investigations, the use of acetaminophen or NSAIDs has been found to lower the risk of developing multiple cancers, including ovarian cancer. The purpose of Dr. González's study is to evaluate the association between ovarian cancer and these drugs in patients at a referral hospital in Bogotá, Colombia.



Dr. Jennifer Walker

University of Melbourne
Melbourne, Australia

Area of study: Cancer risk assessment tools in primary care

Host Institution: Washington University in St. Louis, U.S.

Purpose: Dr. Walker's objectives are to participate in an academic visit to advance her skills in implementation science, increase opportunities for international collaborations with world leaders in implementation science, and disseminate her research to the international implementation science research community.



Olga Aleksandrovna Vlasova

N.N. Blokhin Russian Cancer
Research Center
Russia

Area of study: Influence of non-mutagenic DNA-binding small molecules on chromatin structure and FACT function

Host institution: Roswell Park Cancer Institute, U.S.

Purpose: Ms. Vlasova is studying preventive activity against colorectal cancer, demonstrated by a number of natural non-mutagenic DNA-binding compounds.



“While the debate over health care in the U.S. Congress continues, the fact remains that prevention and early detection reduce health care costs and save lives.”

— Carolyn Aldigé

ADVOCACY

This year has seen many significant challenges to prevention and early detection advocacy efforts. Numerous attempts to pass new health care legislation put the **Prevention and Public Health Fund** in jeopardy, and had those efforts been successful, would have had dire consequences for community organizations that provide screenings and vaccinations to millions of Americans who can't afford them. This has made it all the more important for the Foundation to grow and engage its advocacy base, while continuing to support legislation that makes it easier for people to access lifesaving cancer screening and coverage for preventive services. As part of that effort, the Foundation's *Advocacy Toolkit* provides a step-by-step guide for advocates on speaking with your respective members of Congress and engaging them in a dialogue to advance access to innovative services.

The Foundation's policy and advocacy program is here to educate public officials and move the debate in Congress, as well as to engage and empower grassroots advocates across the nation. Our biweekly online advocacy newsletter serves to inform stakeholders on current issues that impact prevention and direct advocates toward opportunities to become effective change agents.

Moving into next year, we will continue our work in advocating for new preventive measures and ensuring all Americans have access to and coverage for the cancer vaccinations and screenings they need.



**Make your voice heard
and join our growing
advocacy network. Help
us make a difference in
cancer prevention and
early detection.**

SUPPORT | ANNUAL SPRING GALA

The 2017 Annual Spring Gala, “Italy: Icon of Innovation,” was held under the honorary patronage of His Excellency, the Ambassador of Italy, Armando Varricchio and Mrs. Varricchio. The Gala was attended by more than 1,000 people and raised nearly \$1.6 million to support cancer research fellowships and community outreach programs.

Gala décor was personally designed by celebrity event planner David Tuter, who is a member of the Foundation’s Board of Directors. The Prevent Cancer Foundation® Annual Spring Gala is repeatedly named by BizBash as one of Washington’s Top 100 Events (#4 in the Benefits category in 2017).

This page, clockwise from top:

His Excellency, the Ambassador of Italy, Armando Varricchio, with (L) Mrs. Varricchio and (R) Carloyn “Bo” Aldigé

(L to R) The Honorable Kevin McCarthy, Hollyn Kidd Schuemann, Jason Van Pelt

(L to R) David Tuter, Slomique Hawrylo, Nii-Quartelai Quartey, Montre’ Burton





5K WALK/RUN AND HEALTH FAIR

Every year hundreds of dedicated runners and walkers show up in their Prevent Cancer green to take steps to better health, while helping to raise funds for the Foundation's community programs. This year's 5k Walk/Run and Health Fair brought in \$287,000 for prevention and early detection programs. The event starts and ends at the Washington Nationals ballpark and follows a course along the beautiful Capitol Riverfront, but the fun doesn't stop there. Participants enjoy the health fair on the stadium concourse, which includes screenings and vaccinations, a walk through the Prevent Cancer Super Colon®, and activities for the whole family, including access to the Nationals' batting cages.

**More than
\$285,000
raised in 2016**



AWESOME GAMES DONE QUICK



“Greetings from England. I don’t have a personal ‘cancer story,’ but I know plenty of people whose lives have been affected by the disease. Let’s make a world where no one has a cancer story.”

— AGDQ donor

\$2.2 million raised in 2017

Awesome Games Done Quick (AGDQ) is a 24/7 video game marathon that is livestreamed around the world in support of the Prevent Cancer Foundation®. Hundreds of video gamers meet in Virginia to “speedrun,” or play games as fast as they can, many of them breaking world records. At the same time, gamers from around the globe tune in online and donate to the Foundation. This year they broke a Foundation event fundraising record, bringing in \$2.2 million dollars to *Stop Cancer Before It Starts!*®

“I lost my father this April to liver cancer....Thank you guys so much for this stream, you don’t know how much it means to those of us that have lost loved ones to cancer.”

— AGDQ donor

BOARD OF DIRECTORS



CAROLYN R. ALDIGÉ
President and Founder



Scott McIntyre
Chairman



GARY LYTLE
Vice-Chairman



JOANN PICCOLO
Vice-Chairman



JAMES MULSHINE,
M.D.
Vice-Chairman,
Scientific Director



KATHRYN WEST, RN
Secretary



BROCK LANDRY
Treasurer



KATHERINE ALLEN



FRANTZ ALPHONSE



JENNIFER CHRISTIE



RON CHRISTIE



VIC FAZIO



DREW FIGDOR



JEREMY HARDY
FITZGERALD



KIMBERLEY FRITTS



JOYCE H. GATES



LILIBET HAGEL



CHARLES S. HOUSER



PETER LEVIN, PH.D.



SHERI PETERSON
MCGRATH



PAWAN SINGH



GEORGE SWYGERT

SUSTAINING DIRECTORS

Betty Alewine
Michael F. Brewer
Ron Doornink
Karen D. Fuller
Gordon (Don) Hutchins, Jr.
Joel Jankowsky
Marcelle Leahy
Jon Mittelhauser
Jean Perin
Andrea Roane
David Tutera
Margaret Vanderhye
Virginia A. Weil

EMERITUS DIRECTORS

David S. Alberts, M.D.
Catherine P. Bennett
Margaret Bush
Marcia Myers Carlucci
Elmer E. Huerta, M.D., MPH
Alexine Clement Jackson

FOUNDING DIRECTORS

Alan P. Dye
The Honorable
Harold M. Keshishian*

*deceased



MEDICAL ADVISORY BOARD

CHAIRMAN

David S. (Dave) Alberts, M.D.
Director Emeritus, University of Arizona
Cancer Center
Regents Professor of Medicine,
Pharmacology, Nutritional Sciences,
Public Health and BIO5

Jasjit S. Ahluwalia, M.D., MPH, MS
Professor, Brown University School of
Public Health

Bart Barlogie, M.D., Ph.D.
Professor of Medicine, Hematology and
Medical Oncology
Ichan School of Medicine, Mount Sinai

Rachel F. Brem, M.D.
Director, Breast Imaging & Interventional
Center
Professor of Radiology, George
Washington University Medical Center

Paul A. Bunn Jr., M.D.
Professor, James Dudley Chair in Cancer
Research
University of Colorado Denver School of
Medicine, Division of Medical Oncology

Donald S. Coffey, Ph.D., D.Sc.
Professor, Urology, Oncology, Pathology,
and Pharmacology
Johns Hopkins University School of
Medicine

Kenneth H. Cowan, M.D., Ph.D.
Director, Fred and Pamela Buffett Cancer
Center
University of Nebraska Medical Center

Riccardo Dalla-Favera, M.D.
Director, Institute for Cancer Genetics
Herbert Irving Comprehensive Cancer
Center
Columbia University Medical Center

William S. Dalton, Ph.D., M.D.
Founding Director, Personalized Medicine
Institute
H. Lee Moffitt Cancer Center & Research
Institute

Andrew Dannenberg, M.D.
Henry R. Erk, MD – Roberts Family
Professor of Medicine
Weill Medical College of Cornell University

**Robert W. Day, M.D., Ph.D.,
M.P.H.**
President & Director Emeritus
Member, Public Health Sciences
Fred Hutchinson Cancer Research Center
Professor, Health Services
School of Public Health and Community
Medicine, University of Washington

Raymond N. DuBois, M.D. Ph.D.
Dean, College of Medicine
Medical University of South Carolina

H. Shelton (Shelley) Earp III, M.D.
Director Emeritus
Lineberger Comprehensive Cancer Center
University of North Carolina

Stephen B. Edge, M.D.
Vice President, Healthcare Outcomes and
Policy
Roswell Park Cancer Institute

Margaret Foti, Ph.D., M.D., (h.c.)
Chief Executive Officer
American Association for Cancer
Research (AACR)

Harold P. Freeman, M.D.
Medical Director, Ralph Lauren Center for
Cancer Care and Prevention

Patricia A Ganz, M.D.
Professor, UCLA Schools of Medicine and
Public Health
Director, Division of Cancer Prevention &
Control Research
Jonsson Comprehensive Cancer Center
University of California, Los Angeles

David M. Gershenson, M.D.
Professor and Chair, Department of
Gynecologic Oncology
The University of Texas MD Anderson
Cancer Center

Edward Giovannucci, M.D., Sc.D.
Associate Professor of Nutrition and
Epidemiology
Harvard School of Public Health

Anna R. Giuliano, Ph.D.
Professor and Director of Cancer
Prevention
H. Lee Moffitt Cancer Center & Research
Institute

Gary E. Goodman, M.D., M.S.
Staff Oncologist/Joint Member
Swedish Cancer Institute
Fred Hutchinson Cancer Research Center

Stanley R. Hamilton, M.D.
Professor and Head, Division of Pathology
and Laboratory Medicine
The University of Texas MD Anderson
Cancer Center

**Claudia Henschke, M.D., Ph.D.,
FCCP**
Clinical Professor of Radiology
The Mount Sinai Hospital
Department of Radiology
Mount Sinai School of Medicine

Waun Ki Hong, M.D.
Professor, Department of Thoracic Head
and Neck Medical Oncology
The University of Texas
MD Anderson Cancer Center

Elmer E. Huerta, M.D., M.P.H.
Director, Cancer Preventorium
Washington Cancer Institute, Washington
Hospital Center

Derek M. Huffman, Ph.D.
Assistant Professor of Medicine &
Molecular Pharmacology
Co-Director, Healthy Aging Physiology
Core
Institute for Aging Research
Albert Einstein College of Medicine

Lovell Allan Jones, Ph.D.
Research Faculty
College of Science & Engineering
Texas A&M University Corpus Christi

Ann G. Kulze, M.D.
Dr. Ann & Just Wellness, LLC

**LaSalle D. Leffall, Jr., M.D.,
F.A.C.S.**
Charles R Drew Professor, Department of
Surgery
Howard University Hospital College of
Medicine

Bernard Levin, M.D.
Professor (Emeritus), The University of
Texas MD Anderson Cancer Center

Marc E. Lippman, M.D.
Kathleen & Stanley Glaser Professor
Deputy Director, Sylvester Comprehensive
Cancer Center
Chairman, Department of Medicine
Leonard M. Miller School of Medicine

Scott M. Lippman, M.D.
Director, Moores Cancer Center
University of California, San Diego

Patrick J. Loehrer, Sr., M.D.
Director, Melvin and Bren Simon Cancer
Center, Indiana University

John L. Marshall, M.D.
Associate Professor of Medicine
Chief, Division of Hematology and
Oncology
Lombardi Comprehensive Cancer Center
Georgetown University Hospital

Elena Martinez, M.P.H., Ph.D.
Professor of Family and Preventive
Medicine, Moores Cancer Center
University of California, San Diego

Harold L. Moses, M.D.
Director Emeritus, Vanderbilt-Ingram
Comprehensive Cancer Center

SCIENTIFIC REVIEW PANEL

Larry Norton, M.D.
Deputy Physician in Chief, Breast Cancer Programs
Memorial Sloan-Kettering Cancer Center

Gilbert S. Omenn, M.D., Ph.D.
Professor of Internal Medicine, Human Genetics and Public Health
University of Michigan

Darrell S. Rigel, M.D.
Clinical Professor of Dermatology
New York Medical Center

John C. Ruckdeschel, M.D.
Director, University of Mississippi Cancer Institute

David Schottenfeld, M.D., M.Sc.
John G. Searle Professor Emeritus of Epidemiology and Internal Medicine
University of Michigan School of Public Health, Department of Epidemiology

Paul Talalay, M.D.
John Jacob Abel Distinguished Service Professor
Professor, Department of Pharmacology and Molecular Sciences
Johns Hopkins University School of Medicine

Andrew Weil, M.D.
Founder & Program Director
Program in Integrative Medicine
University of Arizona

George J. Weiner, M.D.
Director, Holden Comprehensive Cancer Center
University of Iowa

Richard C. Wender, M.D.
Chief Cancer Control Officer,
American Cancer Society

Petra Wilder-Smith, D.D.S., Ph.D.
Director of Dental Programs,
Beckman Laser Institute and Medical Clinic
University of California Irvine

Walter C. Willett, M.D., Dr.P.H.
Frederick John Stare Professor of Epidemiology and Nutrition
Chairman, Department of Nutrition
Harvard School of Public Health

Stephen C. Yang, M.D.
Chief, Division of Thoracic Surgery
Associate Professor, Surgery and Oncology
The Johns Hopkins Medical Institution

Robert C. Young, M.D.
President, RCY Medicine

Bernard Levin, M.D. (Co-Chair),
University of Texas, MD Anderson Cancer Center

James L. Mulshine, M.D. (Co-Chair)
Rush Medical College, Rush University

Christopher Albanese, Ph.D.
Lombardi Comprehensive Cancer Center,
Georgetown University Medical Center

Rebecca Ashare, Ph.D.
Perelman School of Medicine,
University of Pennsylvania

Janet Audrain-McGovern, Ph.D.
Perelman School of Medicine,
University of Pennsylvania

Christine D. Berg, M.D.
Johns Hopkins Medicine

David Berrigan, Ph.D., M.P.H.
National Cancer Institute

Robert Clarke, Ph.D., D.Sc.
Lombardi Comprehensive Cancer Center,
Georgetown University Medical Center

Nancy Emenaker, Ph.D., M.Ed., R.D.N
National Cancer Institute

Leena Hilakivi-Clarke, Ph.D.
Georgetown University

Stephen D. Hursting, Ph.D., M.P.H.
Lineberger Comprehensive Cancer Center,
University of North Carolina at Chapel Hill

Brian Lehmann, Ph.D.
Vanderbilt University,
Vanderbilt-Ingram Cancer Center

Mary Beth Martin, Ph.D.
Lombardi Comprehensive Cancer Center,
Georgetown University Medical Center

Carola Neumann, M.D.
University of Pittsburgh Cancer Institute Women's Cancer Research Center, Magee-Womens Research Institute

Marc D. Schwartz, Ph.D.
Lombardi Comprehensive Cancer Center,
Georgetown University Medical Center

Peter G. Shields, M.D.
Wexner Medical Center,
The Ohio State University

Kenneth D. Tew, Ph.D., D.Sc.
Medical University of South Carolina

Danyelle M. Townsend, Ph.D.
Medical University of South Carolina

Bruce J. Trock, Ph.D.
Johns Hopkins University School of Medicine

Kent E. Vrana, Ph.D.
Penn State College of Medicine

Zhen Zhang, Ph.D.
Johns Hopkins Medical Institutions

WAYS TO GIVE

The Prevent Cancer Foundation® relies on donations from supporters like you. Thanks to these donations, we have invested in groundbreaking cancer research in support of our mission for more than three decades. We value your partnership and hope you will continue to support our vision to *Stop Cancer Before It Starts!*®

Here are several ways you can support the Prevent Cancer Foundation® today:



Give Monthly

Recurring gifts provide the Foundation with consistent funds and are easier on your pocketbook.



Direct Giving

Every dollar donated supports our vision to *Stop Cancer Before It Starts!*®



Celebrate a Loved One

Donate in honor of a loved one and help save the lives of others.



Plan a Gift

Help cancer prevention and early detection now and in the years to come.



Give at Work

A simple way to give through your payroll deductions. Our combined federal campaign number is CFC 11074.

prevent**cancer**®
FOUNDATION

Stop Cancer Before It Starts!®

Thank You!

DONOR SPOTLIGHT



John and his wife Karen have been contributing to the Foundation since 2014.

“In an environment where changes happen so quickly; it is vitally important that all sources (big and small) be given the funding and the opportunity to develop their research in the prevention and early detection of cancer. It is equally important that this new information is dispersed to all cancer patients so that no one has to say, ‘If I had only known.’ Prevent Cancer is doing just that.”

— John A. Hanley, cancer survivor

“Cancer is still an ongoing, major disease that affects people regardless of age. Education is paramount to this cause. The Prevent Cancer Foundation® does their part to make it more accessible to the general population.”

— Koo Yuen



Koo and his wife Patricia have been contributing to the Foundation since 2014.

OUR DONORS

THE EDWARD PERRY RICHARDSON LEGACY SOCIETY

Edward Perry Richardson was the father of Carolyn R. Aldigé, president and founder of the Prevent Cancer Foundation. His struggle against cancer inspired her to establish the organization and his memory has sustained Prevent Cancer's mission of saving lives across all populations through cancer prevention and early detection. Members of the Edward Perry Richardson Legacy Society are special friends of the Prevent Cancer Foundation who have committed to ensuring the legacy of Prevent Cancer by naming it as a beneficiary in their will, charitable gift annuity, charitable trust, individual retirement account or life insurance policy, or have made a gift of real estate or tangible personal property.

LEGACY MEMBERS

Mr. Henry Acad*
Mr. and Mrs. James G. Aldigé III
Mrs. Betty C. Alewine
Mr. Dewey Vincent Allen*
Mrs. Florence Atkins*
Mr. Forrest R. Ayers*
Miss Helen U. Baker*
Ms. Margaret Bartel*
Mrs. Lee Lupher Bartruff*
Ms. Reba Cora Bean*

Mr. John A. Beaty*
Mr. Anton J. Befort*
Ms. Alice Elizabeth Behnke*
Ms. Ellen Behrens
Dr. Charles Bessey*
Ms. Elizabeth M. Beylon*
Ms. Elizabeth R. Black*
Mr. Rex A. Bohling*
Mrs. Anne R. Bord*
Ms. Lucille Bowman*
Mrs. Rosa Braun*
Mrs. Lucille Brents*
Ms. Artie Mae Brooks*
Ms. Jenny Brown*
Dr. Victoria Nicolau Busulegas*
Ms. Ettorina M. Cardella*
Ms. Ida T. Cavoli*
Ms. Victoria Conchie*
Mrs. Isabel H. Cosgrove*
Mrs. Jennie R. Craib*
Ms. Martha F. Cromley*
Mr. Richard L. Davies*
Mr. Marvin M. Davis*
Mrs. Idella Church Dean*
Mrs. Katharine S. DeLashmutt*
Ms. Eva Devecsery*
Miss Leslie C. Devereaux
Ms. Irene Diefenbach*
Mrs. Sally Dollinger*
Mrs. Virginia S. Doolittle*
Mrs. Myrtle F. Draffen*
Mrs. Sylvia N. Ehrlich*
Mr. Charles N. Eischen*
Mr. Jerome L. Ellenberg*
Miss Grace M. Elliott*
Ms. A. Irene Emswiler*
Mr. Paul Escalante*
Miss Mollie R. Evin*

Mr. Edward Joseph Fabish*
Ms. Barbara Falltrick*
Ms. Anita M. Farmer*
Ms. Claire Fearnside*
Ms. Teresa Felton*
Mr. Robert I. Fendrich*
Ms. Estelle Filomio*
Mr. and Mrs. Peter J. FitzGerald, Sr.
Mr. Howard E. Foltz*
Mr. Jay B. Foote, Jr.*
Mr. Marion Frank*
Ms. Berta Mae Gallagher*
Ms. Helen M. Galvin*
Mr. Lewis T. Gardiner*
Mr. Harold N. Gilbert*
Mrs. Esther Glendinning*
Ms. Susan L. Goroll*
Ms. Patricia O. Greenwell*
Mr. James T. Grossmann
Mrs. Helen Hall*
Mr. Samuel D. Hall, Jr.*
Ms. Elizabeth Handley*
Mr. and Mrs. Van Buren Hansford*
Ms. J. Harriet Hanson*
Ms. Myrtle Hara*
Ms. Sarah A. Hayat*
Ms. Goldie Herrmann*
Mrs. Ruth Hoare*
Ms. Maria M. Hoemann*
Mrs. Deborah Houlihan
Mr. and Mrs. Charles S. Houser
Mrs. Alexine Clement Jackson
Ms. Stella Jacobs*
Ms. Elizabeth C. Jenne*
Ms. Elsie D. Johnson*
Ms. Hazel Johnson*
Mr. Nahum Joslyn*
Mrs. Leslie A. Karr

Mr. Joseph F. Kelly, Jr.
Mrs. Lenora M. Kerschner*
Ms. Virginia Kintz*
Lt. Col.* and Mrs. William Konze
Ms. Rose Koury*
Ms. Harriet R. Kutik*
Mr. Emil G. Kramer*
Mr. Herbert Kramer*
Mrs. Phyllis Kroeger*
Ms. Lorraine D. Lader*
Ms. Carla Laemmle*
Mr. Brock R. Landry
Ms. Tirzah A. Lassahn*
Mrs. Floy Lehman*
Ms. Jennie C.C. Li*
Ms. Laurie D. Lima*
Mr. and Mrs. Hal Litzius*
Mr. Stanley L. Mackey*
Mr. Gordon L. Mann, Jr.*
Mr. Pasquale A. Maresco*
Mr. Benjamin Marks*
Ms. Blondie L. Marsh*
Ms. Anna Martinese*
Ms. Miriam H. Mason*
Mrs. Mary E. Mathis*
Ms. Barbara Mazur*
Mr. Norman S. McCallister*
Mrs. Virginia N. McConchie*
Mr. Robert Lee McGuire*
Mr. Robert F. McKinley*
Ms. Margaret F.L. McKnight*
Ms. Ezilda T. Michel*
Ms. Irene B. Miller*
Ms. Amy Mitchell*
Mr. and Mrs. Jon E. Mittelhauser
Ms. Diane M. Montini*
Ms. Mary Helen Moorhead*
Mr. Donald Moy*

Ms. Marabelle Nape*
Ms. Claire Nemser*
Mr. and Mrs. Donald R. Neubrecht*
Mrs. Elizabeth H. Newberry*
Mr. Bernard Niewoehner*
Mr. Harvey L. Panzer*
Mrs. Anna Papa*
Ms. Rose Pasternak*
Mrs. Catherine Bond Patterson*
Ms. Lonetta C. Patterson*
Mr. and Mrs. Thomas Perez
Mrs. Josephine Ann Perrella*
Ms. Patricia A. Peterson*
Ms. Sylvia Petters*
Mr. Richard J. Phillips*
Ms. Joann Piccolo and
Mr. Timothy Carmody
Mr. John J. Pikulski*
Mrs. Myrtle Potter*
Mr. John Prigee*
Mrs. Nancy Gray Pyne
Mrs. Josephine Rich*
Ms. Joan L. Rochelle*
Mrs. Zelda B. Rockwell*
Ms. Arlene Rosen*
Mr. Richard T. Russell, Jr.
Mrs. Ida I. Schaefer*
Dr. and Mrs. Daryl R. Schaller
Mrs. Charlotte E. Schneider*
Ms. Marian A. Schwab*
Mr. Glenn E. Selix*
Mrs. Theresa R. Shapiro*
Ms. Eleanor Shelly*
Mr. Alfred J. Shaw*
Ms. Dorothy Singleton*
Mr. Elias Skaaren*
Mrs. Elizabeth Cornell Smith*
Ms. Elvera W. Smith*

Ms. Betty C. Stich*
Ms. Claire Strub*
Ms. Genevieve Suss*
Ms. Mildred Swartzbaugh*
Ms. Ruth Thayer*
Mr. Overton Arnold Thompson*
Mrs. Ione M. Uphoff*
Mr. Nicholaas Van Riesen*
Ms. Colleen Mae Veith*
Dr. Jan P. Vette*
Ms. Margaret Vorous
Ms. Rose Helen Walker*
Mrs. Margery L. Weil*
Mr. Richard Weiss*
Ms. Bertha Wempe*
Ms. Sarah H. West*
Mrs. Laura S. Williams
Mrs. Margaret A. Wilson*
Ms. Kathy Winslowe*
Ms. Victoria Winters*
Mr. James B. Wittrock*
Mr. Murlyn V. Wolstenholm*
Ms. Edith M. Zimmerman*
Ms. Bernice Zuber*
* Deceased

LIFETIME FRIENDS

(\$25,000 and above
in lifetime giving)

INDIVIDUALS

\$1,000,000 and above
The Devereaux Foundation
\$500,000 to \$999,999
Estate of Tirzah A. Lassahn
Estate of Stanley L. Mackey

Estate of Gordon L. Mann, Jr.
Joan L. Rochelle Revocable Trust
Dr. Paul G. Stern

\$100,000 to \$499,999

Dr. and Mrs. Ralph W. Alewine III
Estate of Dewey V. Allen
Estate of Florence Atkins
The Cecile and Fred Bartman Foundation
Estate of Lee Lupher Bartruff
Bohling 1994 Trust
Estate of Anne R. Bord
The Honorable Frank C. Carlucci and Mrs. Marcia Myers Carlucci
James H. Clark Charitable Foundation
Estate of Martha F. Cromley
Estate of Richard Davies
Estate of Marvin M. Davis
Doornink Family Charitable Fund
Robert I. Fendrich Family Trust
Estate of Samuel Hall, Jr.
Mr. and Mrs. Charles F. Holden III
Mr. and Mrs. Don Hutchins, Jr.
Estate of Hazel M. Johnson
Lt. Col. and Mrs. William Konze
Estate of Harriet R. Kutik
Mr. Brock R. Landry and Mrs. Diane M. Casey-Landry
Estate of Jennie C. Li
Laurie D. Lima Trust
Mr. and Mrs. Richard Meyer III
The Neubrecht Family Trust
Estate of Harvey L. Panzer, Jr.
Ms. Jean Perin
Estate of Josephine Ann Perrella
Rogers Rissler Foundation
Estate of Theresa R. Shapiro
Estate of Eleanor Shelly
Estate of Dorothy Singleton
Mrs. Rachel Stern
Estate of Betty C. Stich

Richard and Marianne Stohlman Family Foundation
Estate of Margery L. Weil
Ms. Virginia A. Weil
Estate of Margaret A. Wilson
Estate of Murlyn V. Wolstenholm

\$25,000 to \$99,999

Mr. and Mrs. James G. Aldigé III
The Honorable Hushang Ansary and Mrs. Ansary
Alfred Bartel and Margaret Bartel 1992 Revocable Trust
Estate of John A. Beaty
Ms. Catherine P. Bennett and Mr. Fred Frailey
Mr. and Mrs. John D. Beveridge
Elizabeth R. Black Revocable Trust
Mr. Richard F. Blackburn
Mr. and Mrs. David G. Bradley
Estate of Rosa Braun
Michael Brewer and Janet Brown Charitable Fund
Mr. and Mrs. Marvin P. Bush
Mr. Landon H. Butler
Estate of Ida T. Cavoli
Mr. Scott Cawthon
Ms. Concetta DiLeo
The Max and Victoria Dreyfus Foundation
Mr. and Mrs. Alan P. Dye
Estate of Grace M. Elliott
Estate of Paul Escalante
Ms. Linda K. Eyestone
Estate of Edward Joseph Fabish
Estate of Barbara Falltrick
Estate of Anita M. Farmer
Estate of Claire Fearnside
Mrs. Andrea S. Ferris
Mr. and Mrs. Drew Figdor
Mr. and Mrs. Peter J. FitzGerald, Sr.
Estate of Howard E. Foltz
The Carl M. Freeman Foundation, Inc.

Mrs. Kimberley D. Fritts and Mr. Francis M. Turner
The Honorable and Mrs. Craig Fuller
Mr. and Mrs. Rafe Furst
Helen M. Galvin Charitable Trust
Estate of Lewis T. Gardiner
Mr. Thomas Gardner
Mr. and Mrs. Bruce A. Gates
Mr. and Mrs. Joseph Gleich
Mr. and Mrs. Phil Gordon
Estate of Patricia O. Greenwell
Estate of Mr. and Mrs. Van Buren Hansford
Estate of J. Harriet Hanson
Estate of Sarah A. Hayat
Mr. and Mrs. Phillip Hellmuth, Jr.
Mr. and Mrs. Terry J. Houlihan
Joel & Carol Jankowsky Foundation
Estate of Elsie D. Johnson
Mr. and Mrs. Thomas H. Johnston
Mrs. Leslie A. Karr
Mr. Anthony P. Kavanagh
KBPK Foundation
Virginia J. Kintz Charitable Remainder Trust
Charles A. Kraenzle Colon Cancer Foundation
The Lebensfeld Foundation
Estate of Hal Litzius
Mr. and Mrs. Gary R. Lytle
Ms. Kathryn A. MacLane and Mr. Dan Alcorn
Estate of Pasquale A. Maresco
Mr. and Mrs. Michael McGettigan
Mr. and Mrs. Mark D. McKinnon
Mr. and Mrs. Michael R. Megargee
Irene B. Miller Foundation, Bank of America, N.A., Co-Trustee
Mr. Chris Moneymaker
Estate of Diane M. Montini
Mrs. Angela Moore
Drs. James and Pamela Mulshine
Mr. and Mrs. Arthur H. Nash

Sylvan and Ann Oestreicher Foundation, Inc.
Estate of Lonetta C. Patterson
Mrs. Marjorie F. Perin
Mr. Markus Persson
Peterson Family Foundation
Estate of Sylvia Petters
Mr. Dennis Phillips
Ms. Joann A. Piccolo and Mr. Timothy Carmody
The Lynn R. & Karl E. Prickett Fund
Mrs. Nancy Gray Pyne
Mr. and Mrs. Alfred C. Quenneville
Catherine B. Reynolds Foundation
Rocksprings Foundation
The Juliet Rosenthal Foundation, Inc.
Mr. and Mrs. C. T. Rowe
Ida I. Schaefer Trust
Marian A. Schwab Revocable Trust
Estate of Alfred J. Shaw
Mr. and Mrs. Brian K. Shure
The Honorable and Mrs. Kenneth W. Starr
Mr. and Mrs. Kenneth E. Stinson/Omaha Community Foundation
Ken and Ann Stinson Fund
Estate of Claire B. Strub
Mr. and Mrs. Mark A. Taylor
Estate of Overton Arnold Thompson
Mr. Jonathan M. Topodas
Mr. David Tutera
Estate of Ione M. Uphoff
Mr. and Mrs. Robert A. Vanderhye
Estate of Colleen Mae Veith
Estate of Jan P. Vette
Mr. and Mrs. G. D. Vieth
Mrs. Sharon Borg Wall
Mrs. Irene E. Walters
Mr. Paul Wasicka
Mr. Robert S. Weil, Sr./The Viro Fund
Mr. and Mrs. Anthony Welters
Estate of Sara H. West

Mr. and Mrs. D. Anderson Williams/The Christian Giving Fund
Mr. James B. Wittrock
Mr. Robert H. Zeps
Estate of Edith M. Zimmerman
Estate of Bernice Zuber

ORGANIZATIONS

\$1,000,000 and above

Amgen
Amgen Foundation
AstraZeneca LP
Awesome Games Done Quick
Bristol-Myers Squibb Oncology
Genentech, Inc.
GlaxoSmithKline
Lilly USA, LLC
Merck & Co., Inc.
Novartis Pharmaceuticals Corp.
Pfizer
Pharmacia Corporation
Roche
Sanofi
Susan G. Komen
Walmart Foundation

\$500,000 to \$999,999

Eisai, Inc.
Gilead Sciences
Matthew Hill Foundation
PhRMA

\$100,000 to \$499,999

Abbott Laboratories
AbbVie, Inc.
Akin, Gump, Strauss, Hauer & Feld, L.L.P.
American Cancer Society
American Council for Excellence & Opportunity
American Society of Clinical Oncology
AmerisourceBergen

Astellas/OSI
AT&T
Bank of America
Bayer HealthCare LLC
Beckman Coulter
The Boeing Company
Caesar's Entertainment Group
Celgene Corporation
Comcast Corporation
COMSAT International Holdings
Daimler
Deloitte
EMD Serono, Inc.
Ernst & Young LLP
Exact Sciences Corporation
FedEx Corporation
Ford Motor Company
FoxKiser
General Dynamics Corporation
General Motors Foundation
Georgetown University/Lombardi Comprehensive Cancer Center
The Gloria Heyison Breast Cancer Foundation
Hologic, Inc.
Humble Bundle, Inc.
IBM Employee Services Center
Johnson & Johnson
Kellogg Company
LIVESTRONG Foundation
Living In Pink, Inc.
Lockheed Martin Corporation
Mac Heist
Microsoft Corporation
NACDS Foundation
National Association of Broadcasters
National Race for the Cure
NCTA – The Internet & Television Association
New York Life
Northrop Grumman Corporation

| | | | | | |
|---|---|--|--|--|--|
| Onyx Pharmaceuticals | Allied Domecq Spirits & Wine USA, Inc. | Cardinal Health | Fund to Prevent Cervical Cancer | Nathanson + Hauck LLC | Sunoco, Inc. |
| Otsuka Pharmaceutical, Inc. | Allstate Insurance Company | Cardon Outreach | Game Time Marketing, LLC | National Association of Convenience Stores | Tele-Communications, Inc. |
| PwC | Alston & Bird, LLP | CBS Eco Media | GE Company | National Dialogue On Cancer Foundation | Tesaro |
| Qwest Communications | American Airlines, Inc. | C-Change | General Motors LLC | Nestlé | Teva Pharmaceuticals |
| Salt River Project | American Beverage Association | CenterPoint Energy, Inc. | Genomic Health, Inc. | News Corporation Ltd. | Time Warner Cable |
| SBC Foundation | American Chemistry Council | CenturyLink | Georgia Department of Education School & Community Nutrition | NextEra Energy, Inc. | tinyBuild LLC |
| SBC Telecommunications, Inc. | American College of Radiology | Chicago Mercantile Exchange | Goldman, Sachs & Co. | The Nickles Group LLC | The Travelers Indemnity Company |
| Schering-Plough Corporation | American Express Company | Christus Health | Green Flash Brewing Co. | Nortel Networks | TTR Sotheby's International Realty |
| Southern Company | American Express Foundation | CIGNA | Grocery Manufacturers of America, Inc. | NRA-Institute for Legislative Action | TXU Business Services |
| Takeda Pharmaceuticals International | American Fuel & Petrochemical Manufacturers | Cingular Wireless | G.W. University Hospital's Center for Breast Cancer Services | Nuclear Energy Institute | U.S. Chamber of Commerce |
| TE Connectivity Ltd. | American Gaming Association | Cisco Systems, Inc. | H. J. Heinz Company | Opus East, L.L.C. | Union Pacific Corporation |
| Time Warner, Inc. | American Gastroenterological Association | Citigroup Management Corp. | Harrah's Operating Company, Inc. | Palmetto Peloton Project, Inc. | United Airlines |
| Toyota Motor North America, Inc. | American Insurance Association | Coalition of Cancer Cooperative Groups, Inc. | Helsinn Group | Palms Casino Hotel | United States Steel Corporation |
| Tribune Company | American Medical Association | The Coca-Cola Company | Honeywell International, Inc. | Patton Boggs LLP | United States Telecom Association |
| Tyco | American Society for Radiation Oncology | College of American Pathologists | Hunton & Williams LLP | Personal Care Products Council | United Way Crusade of Mercy |
| United Parcel Service | American-Italian Cancer Foundation | ConAgra Foundation, Inc. | IGH Charitable Foundation, Inc. | The Pfizer Foundation | United Way of Greater Philadelphia & Southern New Jersey |
| United Way of the National Capital Area | AmeriChoice Health Services, Inc. | Corman Construction, Inc. | iHeartMedia, Inc. | PGA Tour Charities, Inc. | United Way of New York City |
| US Oncology | APCO Worldwide | Council of Fashion Designers of America | Instinet | PNC | United We Care |
| Verizon | Apple Inc. | Covidien | International Association for the Study of Lung Cancer | Poker Players Alliance | Universal Music Group |
| Viacom | Arthur Andersen LLP | Covington & Burling | International Physician Networks LLC | Poker Productions | Van Scoyoc Associates |
| The Yetee LLC | Association for Accessible Medicines | CTIA-The Wireless Association | Jack Horner Communications, Inc. | Pokerstars | Vanderbilt University Medical Center |
| \$25,000 to \$99,999 | Aventis Pharmaceuticals, Inc. | Dell Computer Corporation | Ketchum | Progress Energy | Venable Foundation, Inc. |
| 1-800 Contacts, Inc. | B.K. Miller Company, Inc. | Dell Direct Giving | Kiewit Companies Foundation | The Prostate Cancer Foundation | Vodafone U.S. Foundation |
| A&E Television Networks | Baker & Hostetler, LLP | Diageo North America, Inc. | Koch Industries, Inc. | Quest Diagnostics | VP Racing Fuels, Inc. |
| Accenture LLP | Battelle | Discovery Communications | KPMG LLP | Quinn Gillespie & Associates, LLC | Wachovia |
| Active Network | Biotechnology Industry Organization | Dominion Resources Services, Inc. | Ladies Charity Classic of the National Capital Area | Recording Industry Association of America | WEST*GROUP Management LLC |
| Advanced Health Media | Black Entertainment Television | Duke Energy Corporation | Mark Krueger & Associates, Inc. | Reliant Resources, Inc. | Williams & Jensen, PLLC |
| Advanced Medical Technology Association | BlueCross BlueShield Association | Edison Electric Institute | MassMutual | Reuters | Wine and Spirits Wholesalers of America |
| Aetna Foundation, Inc. | BlueCross BlueShield of Nebraska | El Paso Corporation | MasterCard Worldwide | Rockwell Automation | Women's Shooting Sports Foundation of the National Capital |
| Aetna Health Plans | BNSF Railway Company | Emergent BioSolutions | Mayfair Partners, L.P. Boston Market | Ron Ruffennach Golf Classic | World Bank Community Connections Fund |
| Aflac | Boston Scientific Corporation | Endo Pharmaceuticals | Mehlman Castagnetti Rosen Bingel & Thomas, Inc. | Rush University Medical Center | World Reach, Inc. |
| Agir Ltd. | The Brink's Company | Entergy Corporation | Middle-Atlantic Section of the PGA | Schering-Plough Foundation, Inc. | Wyeth |
| Agouron Pharmaceuticals | Brownstein Hyatt Farber Schreck | Exxon Mobil Corporation | The Midtown Group | Shell Oil | |
| Aircraft Owners & Pilots Association | BTIG, LLC | The Financial Services Roundtable | Mortgage Insurance Companies of America | Siemens Corporation | |
| Airlines for America | The Capital Group Companies, Inc. | FLUOR | Motorola | SIFMA | |
| Alaska Poker Association | Capital One Bank | Freddie Mac | The NASDAQ Stock Market, Inc. | Sprint Nextel Corporation | |
| Alberto Culver USA, Inc. | Capitol Counsel | Friedman, Billings, Ramsey, & Co Charitable Foundation, Inc. | | Stohman Volkswagen, Inc. | |
| Alcalde & Fay | Cardinal Bank Community Fund | Full Tilt Services Corporation | | Story Partners | |
| Alexandria Real Estate Equities | | | | Sun Safety Alliance | |

MEMORIAL AND HONOR TRIBUTES

These tributes are special ways to honor friends, loved ones and colleagues. Honor gifts often mark a special occasion like Mother's or Father's Day, bar/bat mitzvahs or a birthday. Many couples also designate the Prevent Cancer Foundation as a recipient of contributions in lieu of wedding or shower gifts. In return, the Foundation sends a card acknowledging these thoughtful donations.

HONOR TRIBUTES

Mr. Joseph Ackerman
Mrs. Carolyn R. Aldigé
Mr. Thomas Bellezza
Ms. Laura Blank
Ms. Dawn Carlson
Ms. Vickey Cassell
Mr. William Chistenberry
Ms. Karen Clark
Mr. Kyriakos Dafnos
Mr. Richard Elliott
Ms. Patricia Elliott
Mrs. Jeremy FitzGerald
Ms. Karen Garcia
Mr. Carl Girolamo
Ms. Winter Girolamo
Mr. Johnathan Goagland
Ms. Susanne Gunter
Ms. Sandra Harpen
Mr. Jerry Helfer
Ms. Becky Helgren
Ms. Pam Hoff
Mr. Don Hutchins
Ms. Shannon Isom

Ms. Deidre Jarrell
Ms. Nicole Jurinek
Dr. Bernard Levin
Ms. Cheri Lyons
Mr. Francis Mastrodonato
Mr. B.C. Mathur
Ms. Sheri McGrath
Ms. Shoshauna Mohlman
Ms. Elizabeth Browder Nibley
Ms. Patricia O'Brien
Mr. Daniel Randolph
Mr. Karthik Reddy
Ms. Sylvia Reina
Ms. Maria Santamaria
Ms. Cynthia Joy Santurio
Ms. Judith Schur
Ms. Julie Simon
Mr. Steve Stone
Ms. Jennifer Sulkin
Mr. Tim Trentman
Mr. Alex Vaca
Mr. Peter Vislocky
Ms. Allison Yount

MEMORIAL TRIBUTES

Mr. G. Allan Acrey
Mr. Ronald Behnke
Ms. Patricia Berg
Mr. Sam Bieno
Ms. Margaret Blinka
Mr. Thomas Bohan
Mr. Edward Boroski
Mr. Christopher Amir Boyd
Mr. Francis Briggs
Mr. Simon P. Brown
Ms. Nancy Butler
Mr. John Cochran
Ms. Mary Conley
Ms. Michele Conley
Mr. Brian C. Craig
Ms. Lauren Csordas
Ms. Deborah T. Cummins

Mr. Carl Delcour
Mr. William Diamond
Mr. Danny Doss
Mr. Joe Dozier, Jr.
Mrs. PJ Edington
Mr. John Ely
Mr. Michael Errecart
Captain Daniel Francis
Mr. Grady Frank
Mr. Ron Fraser
Ms. Linda Gagermeier
Mr. Kenneth Godwin
Mr. Jonathan Goudy
Mr. Howard Grun
Mr. John Lawrence Gust
Ms. Sonia Hamburger
Ms. Georgia Hernandez
Mr. Numa C. Hero, Jr.
Mr. George J. Hoffner, Jr.
Mr. and Mrs. Kenneth Horn
Ms. Janie Houser
Ms. Dicksie Johnson
Ms. Laurel Kamen
Mr. Tom Kinerk
Ms. Sue Kirchner
Mr. Russell Landry
Ms. Lesley Levy
Ms. Catherine Linebarger
Ms. Barbara Lytle
Mr. Richard Le Mahieu
Mr. Barry Martin
Ms. Gail Matheson
Ms. Betty Miller
Ms. Perla Miranda
Ms. June Moy
Ms. Lucretia Nistor
Ms. Ann Northrup
Mr. John Osterbeck
Ms. Sharon Oxford
The Honorable Michael G. Oxley
Ms. Laura Pechacek
Mr. Vincent Pepe

Ms. Katherine M. Pierle
Ms. Maria Rapske
Ms. Lorraine Ravino
Ms. Lorraine Adeline Redlin
Mr. Edward P. Richardson
Mr. Ryan Rogers
Mr. Russ Schaefer
Mr. Kermit C. Schoch
Ms. Charlotte Sensabaugh
Mr. Philip Sigurslid
Mr. Dave Simpson
Ms. Nancy Norling Smith
Ms. Valeria Hicks Smith
Ms. Maria Stefani
Mr. Richard Stohlman
Mrs. Margaret Stohlman Wiegand
Ms. Alice Weatherby
Ms. Rebecca Warren White
Mr. Dain Anderson Williams
Mr. Earle C. Williams
Mr. and Mrs. J.H. Tyler Wilson
Mr. Joseph Zerges

THE DOLL SOCIETY (\$25,000 AND ABOVE)

Sir William Richard Shaboe Doll, a distinguished British physician and epidemiologist, was the first scientist to establish the link between smoking and lung cancer. This singular discovery led scientists to identify a genetic mutation which is caused by chemicals found in tobacco smoke.

INDIVIDUALS

\$50,000 to \$99,999
Estate of Florence Atkins
The Honorable Frank C. Carlucci and Mrs. Marcia Myers Carlucci

The Devereaux Foundation
Mr. and Mrs. Brian K. Shure
\$25,000 to \$49,999
Mr. Scott Cawthon
Robert I. Fendrich Family Trust
Estate of Elsie D. Johnson
Estate of Diane M. Montini
Mr. and Mrs. C. T. Rowe

ORGANIZATIONS

\$1,000,000 and above
Awesome Games Done Quick 2017

\$100,000 to \$999,999
AbbVie, Inc.
Amgen
Genentech, Inc.
Gilead Sciences
Hologic, Inc.
Matthew Hill Foundation, Inc.
Merck
Pfizer Inc.

\$50,000 to \$99,999
Eisai Inc.
Lilly USA, LLC
Novartis Pharmaceuticals Corporation
PwC
The Yetee LLC

\$25,000 to \$49,999
Abbott Laboratories
American Endowment Foundation
Bank of America
Bayer Healthcare
FedEx Corporation
The Financial Services Roundtable
Ford Motor Company
Helsinn Group
Humble Bundle, Inc.
Lockheed Martin
Merck & Co., Inc.

National Association of Broadcasters
Northrop Grumman Corporation
PhRMA
Tesaró

THE BURKITT SOCIETY

(\$10,000 to \$24,999)

Denis Parsons Burkitt was the pioneering British surgeon who first discovered that some cancers could be cured with chemotherapy. He is also known for associating a low-fiber diet with many of the serious diseases in Western society.

INDIVIDUALS

Estate of Henry Acad
Mr. Mikhail Botvinnik
The Carl M. Freeman Foundation, Inc.
Mrs. Kimberley D. Fritts and Mr. Francis M. Turner
Mr. and Mrs. Bruce A. Gates
Mr. Brock R. Landry and Mrs. Diane M. Casey-Landry
Irene B. Miller Foundation, Bank of America, N.A., Co-Trustee
Mr. Ted Okon
Ms. Jean Perin
Mr. Markus Persson
Ms. Joann A. Piccolo and Mr. Timothy Carmody
The Juliet Rosenthal Foundation, Inc.
Mr. Zachary Steltz
Mr. and Mrs. Jonathan M. Topodas
Ms. Virginia A. Weil
Mr. Reid Young
The Yuen Foundation

ORGANIZATIONS

Airlines for America

Akin, Gump, Strauss, Hauer & Feld, L.L.P.
 American Airlines, Inc.
 American Chemistry Council
 American College of Radiology
 American Express Company
 American Medical Association
 AmerisourceBergen
 Association for Accessible Medicines
 Astellas Pharma
 AT&T
 Bloomberg LP
 The Boeing Company
 Brownstein Hyatt Farber Schreck
 BTIG, LLC
 Capital One Bank
 Capitol Counsel
 Celgene Corporation
 Comcast Corporation
 CTIA-The Wireless Association
 Deloitte
 Dropbox
 Edison Electric Institute
 EMD Serono, Inc.
 Faxitron
 Flying Saucer
 General Motors LLC
 Glover Park Group, LLC
 The Goodyear Tire & Rubber Company
 Green Flash Brewing Co.
 Health Care Services Corporation
 Instinet
 LA Kings
 MassMutual
 Microsoft Corporation
 The Midtown Group
 Myriad Genetics, Inc.
 Nathanson + Hauck LLC
 NCTA - The Internet & Television Association

New York Life
 NextEra Energy, Inc.
 Nuclear Energy Institute
 Otsuka America Pharmaceutical, Inc.
 The Ripon Society
 Salt River Project
 Southern Company
 Squire Patton Boggs
 Taiho Oncology
 Takeda Pharmaceuticals International Co.
 TE Connectivity Ltd.
 tinyBuild LLC
 U.S. Chamber of Commerce
 United Parcel Service
 Venable LLP
 Verizon
 Viacom
 VP Racing Fuels, Inc.
 Walmart Stores, Inc.

THE PETO SOCIETY

(\$5,000 to \$9,999)

Sir Richard Peto is a distinguished physician and epidemiologist whose 1981 research at Oxford University with Sir William Doll connected diet and cancer. This work, along with that of other investigators, confirmed that 35 percent of certain cancers may be prevented by eating a healthy diet.

INDIVIDUALS

The Cecile & Fred Bartman Foundation
 Mr. Raphael Brambilla
 The Honorable Victor H. Fazio
 Mr. and Mrs. Peter J. FitzGerald, Sr.
 Mr. and Mrs. Colbert M. Hamels

Mr. and Mrs. Terry J. Houlihan
 Mr. and Mrs. Charles S. Houser
 Mr. Henry Hughes
 Dr. John Hurson
 Mr. and Mrs. Don Hutchins, Jr.
 Mr. Alex Jacobs
 Joel & Carol Jankowsky Foundation
 Ms. Laurie Jelenek
 Mr. Preston Moore
 Mr. Ray Narvaez, Jr.
 Mr. Greg Naso
 Mr. Owen Pitcairn
 Mr. Daniel Ploch
 The Frank J. Romano Foundation Inc.
 Mr. and Mrs. Seth D. Rosen
 Mr. Matthew Speidel
 Mr. Jonathan Spink
 Mr. Jesse Yanocha

ORGANIZATIONS

Aetna Foundation, Inc.
 American Maritime Officers Service
 American Trucking Associations, Inc.
 Biotechnology Industry Organization
 BlueCross BlueShield Association
 Boehringer Ingelheim Pharmaceuticals, Inc.
 CenturyLink
 Epigenomics, Inc.
 Exact Sciences Corporation
 Franklin Square Group
 Goldman, Sachs & Co.
 Guggenheim Securities
 The Home Depot
 IGH Charitable Foundation, Inc.
 iHeartMedia, Inc.
 Inova Health System Foundation
 Insurance Associates
 Jefferies LLC
 Johnson & Johnson
 Lung Cancer Alliance

MasterCard Worldwide
 Monness, Crespi, Hardt & Co., Inc.
 Morgan Stanley & Co., Inc.
 Mylan Laboratories, Inc.
 The NAREIT Foundation
 The Nickles Group LLC
 NRA-Institute for Legislative Action
 Personal Care Products Council
 Pinball Edu Inc
 Pinnacle West Capital Corporation
 PNC
 Quest Diagnostics
 Rockwell Automation
 Serent Capital
 SIFMA
 Tarplin, Downs, and Young, LLC
 TD Securities Inc.
 United First Partners
 Van Scoyoc Associates
 ZD Wines

THE DEVEREAUX SOCIETY

(\$1,000 to \$4,999)

In 1993, Leslie Cameron Devereaux established the Richard C. Devereaux Outstanding Young Investigator Award in memory of her father who died of lung cancer. This grant or fellowship supports promising lung cancer prevention research.

INDIVIDUALS

Mr. and Mrs. James G. Aldigé III
 Mr. and Mrs. Frantz Alphonse
 Mr. Bryce Aona
 Mr. Robert Arciero
 Mr. Patrick Armstrong
 Mr. Aaron Barany

Mr. Kerry Bassett
 Mr. Drew Beierwaltes
 Ms. Catherine P. Bennett and Mr. Fred Frailey
 Mr. Cole Bennett
 Mr. Adam Berry
 Mr. and Mrs. John D. Beveridge
 Mr. Richard Bichler
 Mr. John Bidwell
 Mr. Stefan Bierwagen
 Mr. Arthur Bishop
 Mr. Vern Bittner
 Mr. Chip Black
 Mr. Christopher Black
 Mr. and Mrs. Richard F. Blackburn
 Mr. Max Blair
 Ms. Ashley Blanchard
 Mr. Chris Blume
 Mr. Harvey R. Boltwood
 Mr. Benjamin Bowman
 Mr. Samuel Bowman
 Mr. David Boylan
 Mr. Tim Brennan
 Mr. William Brethauer
 Michael Brewer and Janet Brown Charitable Fund
 Ms. Ashley Brown
 Ms. Lisa Brown
 Mr. and Mrs. Marvin P. Bush
 Mr. Adam Bush
 Mr. and Mrs. James F. Butera
 Mr. Landon H. Butler
 Mr. Jeffrey Carpenter
 Mr. Brian Carr
 Mr. F. Andrew Carroll III
 Mr. Timothy Carver
 Mr. and Mrs. Sean P. Casey
 Mr. Padraic Cashin
 Ms. Christy Cecil
 Mr. Albert Chaulk
 Mr. Luis Hector Chavez
 Mr. Paul Chen

Ms. Marcie M. Coates
 Ms. Meredith L. Cole
 Mr. Jerod Collins
 Mr. Christopher Connett
 Mr. Nicholas Cote
 Mr. Joshua Coulter
 Mr. Jay N. Cranford III
 Mr. Conor Crimmins
 Mr. Andrew Cummings
 Mr. Matthew Danyeur
 Mr. Ed Datri
 Dr. P. J. Wakelyn and Ms. Suzanne C. DeFrancis
 Ms. Stephanie DeLong
 Mr. Jeffrey DeWan
 Mr. Andrew Diamos
 Mr. and Mrs. Ron Doornink
 Mr. and Mrs. Stephen M. Dowicz
 Mr. Daniel Drexler
 Mr. Timothy Durnan
 Mr. and Mrs. Alan P. Dye
 Ms. Julie Eddy Rokala
 Mr. Richard Elliott
 Mr. Drew Fay
 Mr. Clark Fischer
 Mr. Jason Flynn
 Mr. J. J. Foote
 Mr. Corey Frang
 Mr. Brad Gastwirth
 Mr. Sam Geduldig
 Mr. Paul Gerver
 Mr. Shane Gill
 Mr. Jonathan Ginsburg
 Mr. Ben Goldhaber
 Mr. and Mrs. Philip Goldstein
 Mr. Max Gonzalez
 Ms. Maureen Good
 Dr. and Mrs. Gary Gordon
 Mr. Mark Govoni
 Mr. Justin Graham
 Ms. Naomi Gumpel
 Mr. Christopher Gunn

The Honorable and
Mrs. Chuck Hagel
Mr. Cyrus Hall
Mr. and Mrs. John A. Hanley
Ms. Liz Hanpeter
Marilyn A. Harris, Ph.D.
Mr. and Mrs. Itzik Haskel
Ms. Sara Heller
Mr. Dane Henager
Ms. Catherine Hill
Mr. Jeff Hobson
Mr. Ryan Hoes
Mr. Gregory G. Hoffmann
Ms. Melinda Holladay
Ms. Michele E. Holt
Mr. and Mrs. Michael W. Hopke
Mr. Eric Hoplin
Mr. Matt Housh
Mr. and Mrs. John W. Howard, Jr.
Mr. Calvin Hsu
Mr. Christopher Humphrey
Mr. Jeremy Hyrkas
Mr. Willem Jager
Mr. Owen Joe-Strack
Mr. and Mrs. Martin L. Johnson II
Mr. Brian Johnston
Mr. Nathan Jones
Mr. Mark Jordan
Mr. Igor Justino De Souza
Mr. Kevin Kaiser
Mr. Jonathan Karlsson
Mr. and Mrs. Thomas Karr
Mr. Robert Keefe
Mr. Sean Kelly
Mr. and Mrs. Frederick T. Kieferle, Jr.
Mr. John D. Kling II
Mr. Boris Kochergin
Mr. Hans Petter Kragset
Mr. Kevin Lau
Mr. Tom Lawler
Mr. Andrew Lehmer
Mr. Brandon Lennox

Mr. and Mrs. Peter L. Levin
Mr. Steven Lin
Mr. and Mrs. Douglas B. Lowey
Mr. Mark C. Lowham and
Mr. Joseph A. Ruzzo
Mr. and Mrs. Matthew P. Lubman
Mr. and Mrs. Gary R. Lytle
Mr. Matthew Maas
Mr. Gaurav Mangal
Mr. Jackson Marriott
Mr. Zachary Martin
Estate of Anna Martinese
Mr. Benjamin Masius
Mr. Samuel Mathis
Mr. Josiah Matlack
Mr. Ryan Mcauliffe
Mr. Justin McCarthy
Mr. JP McDaniel
Mr. Austin McDonald
Mr. Timothy McGivern
The Honorable and
Mrs. Raymond J. McGrath
Mr. Michael McGuinness
Mr. Palmer Mebane
Mr. Jesse Mercer
Mr. Mike Merin
Mr. Ryan Metante
Ms. Tracy Millar
Mr. Stephen Miller
Mr. and Mrs. Jon E. Mittelhauser
Mr. and Mrs. Jerry B. Moore
Dr. James L. Mulshine and Dr.
Pamela Mulshine
Ms. Emmy Murphy
Mr. and Mrs. Arthur H. Nash
Mr. Berbece Nicolae
Mr. and Mrs. Richard C. Notebaert
Ms. Catlin O'Neill
Mr. Scott O'Reilly
Mr. Jason Oster
Mr. Michael Paley
Mr. Troy Parker

Mr. James Peck
Ms. Chelsea Pfeiffer
Mr. and Mrs. Paul Phaneuf
Mr. and Mrs. James Powers
Mr. Alexander Preston
Mr. and Mrs. Alfred C. Quenneville
Ms. Anne B. Rector
Mr. Alden Redfearn-Eserin
Mr. Thomas Refenes
Mr. Jonas Rehn
Mr. Olivier Renaud
Mr. Buford Richardson
Mr. and Mrs. Daniel W. Riordan
Mr. Michael Robertson
Mr. Jeremy Rodencal
Mr. Jean-Francois Roy
Mr. Andrew Sakai
Mr. Jason Salmon
Mr. Kyle Sampson
Mr. Balaji Sarpeshkar
Mr. Vinay Sarpeshkar
Mr. Ben Sawyer
Mr. Gregory Schaeffer
Elizabeth and Scott Schefrin
Foundation
Mr. Samuel Schetterer
Mr. David Séguin
Ms. Jayden Shagam
Mr. and Mrs. Craig D. Shapero
Mr. Gregory Shepard
Mr. Matthew Sheppard
Ms. Aisha Sheridan
Mr. Edwin A. Sheridan IV
Mr. Jonathan Shoff
Mr. Martin Sørlie
Mr. Steven Southall
Mr. Albert M. Sramek and
Mrs. Jane H. Thorpe
Mr. Michael Staib
The Honorable and
Mrs. Kenneth W. Starr
Mr. Edward Stelmakh

Mrs. Carol Steuart
Mr. Michael Stigall
Ms. Barbara A. Stohlman
Mrs. Marianne Stohlman
Mr. Brian Stringari
Mr. Logan Stromberg
Mr. Derek Suderman
Mr. George Swygert and
Mrs. Lori Jenkins
Mr. Dylan Taylor
Mr. Thomas Teager, Jr.
Mr. and Mrs. J. Timothy Thompson
Mr. Matthew Thorson
Mr. David Tittle
Mr. Patrick Toro
Sami & Annie Totah Family
Foundation
Mr. Carl M. Trevisan
Mr. David Turch
Mr. Matthew Tuttle
Mr. Jacob Underwood
Mr. Robert Vanderhye
Mr. and Mrs. G. D. Vieth
Mr. Michael Villalobos
Mr. William F. Vosbeck
Mr. Joseph West
Mr. Tyler West
Mrs. Laura S. Williams
Mr. Timothy Windingland
Mr. Michael Wisne
Mr. Kenan Yamaner
Mr. Alexander Young
Ms. Kendray Yurtee
Mr. Robert Yu

ORGANIZATIONS

Alexandria Real Estate Equities
Alexandria Toyota
Alloro Collection LLC
American Cancer Society
American University Dance Team
Argent Trust

BGR Foundation, Inc.
Cancer Prevention Institute of
California
The Dennis Meyer Foundation
Dovel Technologies, Inc.
Eureka Restaurant Group LLC
FitzGerald Properties
Frontstream
Georgetown Lombardi
Comprehensive Cancer Center
GHC Associates, Inc.
Greenlight Capital
The Hartford
Hypertrain Digital LTD
Jesse James & Co
Knight Capital Group
Lindsay Management Company LLC
Manheim, Inc.
mindSHIFT Technologies
Pacific Gas & Electric Company
Partners for a Cure
Passport BMW
Patient Advocate Foundation
Ratner Co.
RPS
Signal Group
Simpson Development, Inc.
Skeleton Key
Stohlman Volkswagen, Inc.
Teva Pharmaceuticals
United States Hispanic Chamber of
Commerce
Visionary Consulting Partners LLC
Volkswagen Group of America
Walgreens
Wellness Corporate Solutions
World Bank Community
Connections Fund

THE KESHISHIAN SOCIETY

(\$500 to \$999)

Harold M. Keshishian was a
founding board member of the
Prevent Cancer Foundation. His
leadership and commitment to
Prevent Cancer's mission helped
change the landscape of cancer
prevention and early detection for
generations of individuals affected
by cancer.

INDIVIDUALS

Mr. Joe Abbatiello
Mr. Jonathan Adelstein
Mr. William Anderson
Mr. Josh Appell
Mr. Joshua Arcilla
Mr. Jeff Augustin
Ms. Han Bae
Ms. Emily Baker
V. Max Beard/Lollee Judd
Richardson Trust
Mr. Vincent Bellec
Mr. Hannes Berger
Mr. Adam Berry
Mr. Jonathan Beyer
Mr. Nathaniel Birdsong
Mr. James R. Blinka
Mr. Adam Blonsky
The Honorable and
Mrs. David E. Bonior
Mr. Brett Bonn
Mr. Mitchell Bontrager
The Dorothy C. Boyce Fund
Mr. Michael Breeden
Mr. Thomas Breitenfeldt
Ms. Jan Bresch
Ms. Melanie Brodsky

| | | | | | |
|---|---|---------------------------------|----------------------------------|--|-----------------------------------|
| Mr. Steven Brudenell | Ms. Jessie Dubach-Donahue | Mr. Chris Heavin | Mr. and Mrs. Jonathan M. Kitei | Mr. Joseph McMahan | Mr. Andrew L. Quan |
| Mr. Ian Bruton | Mr. William Duncan | Mr. Mikael Hedberg | Mr. Christopher Knowlton | Mr. Gus Mendoza | Mr. Collin Quinlivan |
| Mr. and Mrs. Thomas Buchanan | Mr. Jeremy Ehret | Mr. Scot Hendricks | Mr. Bradley Koch | Mr. Eric Mickley | Mr. Daniel Reed |
| Mr. Nicholas Byrd | Ms. Janis Eichelberg | Mr. Andrew Herch | Mr. Philip Kollar | Mr. Anthony Mills | Mr. Kevin Regamey |
| Ms. Meghan Cahill | Mr. Anders Ekermo | Mr. Matthew Hesse | Mr. Antti Korhonen | Ms. Melanie Milnes | Ms. Barbara Rehm |
| Mr. Burton J. Carbino | Mr. Jonathon Engstrom | Mr. Seth Hetu | Mr. Zachary Kreiter | Mr. Marc Mischkowsky | Mr. and Mrs. Peter B. Reilly |
| Mr. Scott Carter | Mr. Michael Farcasin | Mr. Douglas Hill | Dr. Ann Kulze and Dr. John Kulze | Mr. Mark Molea | Ms. Joanie Rich |
| Mr. Chris Casto | Mr. James Ferdon | Mr. Drew Hill | Mr. Yuri Kunde Schlesner | Mr. Eric Moll | Mr. Pete Richards |
| Mr. Brian Chau | Mr. William Ferguson | Mr. and Mrs. Scott R. Holden | Mr. Peter Kyrouac | Mr. David Morgan | Mr. Brian Richardson |
| Mr. Zhiwei Chen | Mr. and Mrs. John FitzGerald | Mr. Christopher Holloway | Mr. and Mrs. Matthew Labman | Mr. Jonathan Morrisette | Mr. Nick Ripper |
| Mr. Andrew Chi | Mr. and Mrs. Peter J. FitzGerald, Jr. | Mr. and Mrs. Leo S. Horey III | Mr. John Paul LaFrance | Mr. Patrick Muessel | Mr. Aaron Ritter |
| Mr. David Chialastri | Ms. Caitlin Fitzgibbon | Mr. Jonathan P. Horgan | Ms. Sara Lambert | Mr. and Mrs. Matthew Murrell | Ms. Eriel Rivera |
| Mr. Richard Hans Christ | Mr. Philippe Flamm | Mr. Ethan Horger | Mr. JohnMark Lau | Mr. and Mrs. Michael Najjar | Mr. Timothy Roche |
| The Honorable Jennifer and The Honorable Ronald Christie | Mr. Manuel Fleck | Ms. Anne W. Howard | Mr. and Mrs. Rodney Lawrence | Sis Nash Memorial Fund of the Hampton Roads Community Foundation | Mr. James Rodriguez |
| Mr. David Chuhay | Mr. Mark Fleury | Mr. and Mrs. James P. Howell | Mr. Ryan Lawrence | Mr. Davis Nelson | Mr. Jeremy Roman |
| Mr. Robert Chunn | Ms. Catherine Foltz | Mr. Stephen Howland | Dr. Viet Le | Mr. Markus Niethammer | Mr. Ashton Rose |
| Mr. Brent Clapper | Mr. Matthew Forrester | Mr. Yuting Hsieh | Mr. Soo Young Lee | Mr. Jordan Nowlin | Mr. William Rossi |
| Mr. Eric Coan | Ms. Adoneca Fortier | Mr. Alan Huang | Ms. Yoonjoo Lee | Ms. Amethyst O'Brian | Mr. Oliver Roy |
| Mr. Christopher Cobbold | Dr. Michael Friedlander and Ms. Roberta B. Greenspan | Dr. and Mrs. Herbert M. Hughes | Mr. Phil Leick | Ms. Judith O'Kelley | Ms. Manuela Saenz |
| Mr. Bryce Colbry | Mr. David Fry | Mr. Andrew Hushbeck | Mr. Jeffrey Lewis | Ms. Laura O'Neal | Mr. Haruyoshi Sakai |
| Mr. Daniel Collin | Mr. Mikey Fujiwara | Mr. and Mrs. John P. Hynes, Jr. | Mr. Evan Licht | Mr. Daniel Ortosky | Mr. Omar Saleem |
| Mr. Gavin Conover | Mr. and Mrs. John R. Garrett | Mr. Julian Jäger | Mr. Payne Lichtenberg | Mr. John Padian | Mr. and Mrs. Thomas J. Sargeant |
| Mr. Joseph Coombs | Mr. Seth Garrett | Ms. Lesly Jean-Baptiste | Mr. Morgen Livingston | Mr. Stephen Painter | Mr. Jonathan Sawyer |
| Mr. Derek Cormier | Mr. and Mrs. Peter G. Gartlan | Mr. Mitchell Jeffers | Mr. Connor L. Locke | Mr. Sean Pajot | Mr. Mark Schindel |
| Mr. Daniel Cornelius | Mr. Jason Gingrich | Mr. Scott Jefferson | Mr. Nicholas Loughrey | Mr. William Palocci | Mr. Charles Julien Louis Schmidt |
| Mr. Matthew Couture | Mr. and Mrs. Paul J. Glazer | Mr. John M. Joerger, Sr. | Mr. Beau Luck | Mr. Aaron Paps | Mr. Benjamin Schneider |
| Mr. Gavin Cranston | Mr. Adam Gleitman | Mr. and Mrs. Robert C. Jones | Mr. Spencer Lunbeck | Mr. Joseph Anthony Parrott III | Mr. Daniel Schroeder |
| Mr. David Criminski | Mr. Wade Glenn | Mr. Samuel Jones | Mr. Justin Lux | Mr. Joshua Schussler | Mr. Douglas Schwartz |
| Mr. Robert Culver III | Mr. Philip Golbraikh | Mr. John Jordan | Mr. Jon Lytle | Mr. and Mrs. Delbert W. Parsons | Mr. John Schweers |
| Mr. Fox Cutter | Mr. Jesus Gonzalez | Ms. Helen Joyner | Mr. Alexander Malmberg | Mr. Stephen Patterson | Mr. Brandon Scott |
| Mr. Dave Dale | Mr. Karys Grundman | Mr. Malavarayan Kabilan | Mr. Anand Manu | Mr. Cameron Paul | Mr. David Scott |
| Mr. Jonathan Daniel | Mr. Silva Gunner | Mr. Aaron Kearns | Mr. Greg Alan Margolis | Mr. Kyle Paulsen | Mr. Stephen Scott |
| Mr. and Mrs. Wallace L. Darneille | Mr. Isaac Guthrie | Mr. John Kearsley, IV | Mr. and Mrs. Harry Marlin | Ms. Amanda Pena | Mr. and Mrs. Thomas A. Scully |
| Robert W. Day, M.D. | Mr. Mitchell S. Hailey | Mr. Gerald Keller | Mr. Joshua Martin | Mr. Michael Pena | Mr. Matthew Sell |
| Mr. and Mrs. E. K. Delph | Mr. Andrew Hamilton | Mr. Jonathan Kellner | Mr. Roman Martinello | Mr. Elias Perez | Mr. and Mrs. C. Stephen Shaw, Jr. |
| Mr. Sean DeVarney | Mr. Daniel Hanson | Mr. Ian Kelly | Mr. Jack Mason | Mr. and Mrs. Gerald Perry | Ms. Katie Shaw |
| Mr. Aaron Diehl | Mr. Vlad-Stefan Harbuz | Mrs. Melissa Anne Keshishian | Mr. Jimmy McCarthy | Mr. Stephen Pike | Mr. Michael Shoffeitt |
| Ms. Concetta DiLeo | Mr. Michael Harkins | Mr. Kwang Ketcham | Mr. and Mrs. Patrick J. McCarty | Mr. Brandon Pitman | Mr. and Mrs. Stephen R. Sieke |
| Mr. Aaron Doukas | Mr. Michel Hartzell | Mr. Craig Kirby | Mr. Dave McCurdy | Mr. Kory Ponting | Mr. Alexander Sikora |
| Mr. Jonathan Drobig | Mr. Thomas P. Hasbrouck | Mr. Dave Kirsch | Mr. Brian McHugh | Mr. Michael Poveromo | Mr. Logan Silberg |
| Mr. Joel Drolet | Ms. Martha F. Hay | Mr. Erik Kiss | Mr. Michael McKeon | Mr. Joel Preas | |

Mr. Jonathan Simpson
 Mr. and Mrs. James B. Singerling
 Mr. Ezra Skolnik
 Mr. and Mrs. Paul C. Smith
 Mr. Henry Smith
 Mr. Michael Smith
 Mr. Lawrence Sonntag
 Mr. Daniel Spiers
 Mr. William C. Sprouse
 Mr. Kurtis St. Denis
 Mr. and Mrs. Edward R. Stettinius
 Mr. Cyé Stoner
 Mr. Roland Straehle
 Mr. Stephen Sundberg
 Ms. Victoria Sunesson
 Mr. and Mrs. Robert A. Swearingen
 Mr. Edward Swinson
 Mr. Terry Tai
 Mr. Weijie Tang
 Mr. and Mrs. Robert J. Test
 Mr. Adam Theriault
 Mr. Steven Thomas
 Mr. Matthew Tjeerdsma
 Mr. JD Tomlinson
 Mr. Simon Tóth
 Mr. Peter Tran
 Ms. Megan Turney
 Mr. Stephen Tweedie
 Mr. and Mrs. Gerrit J. Tysse
 Mr. Caleb Veenstra
 Mr. Eryk Vermeulen
 Mr. Joe F. Viar, Jr. and
 Ms. Bonnie Christ
 Mr. Steven Vicharelli
 Mr. Christopher Vincent
 Ms. Julia F. Wade
 Mr. Maximilian Wagner
 Mr. and Mrs. Don Walker
 Mr. Julian Wampfler
 Mr. Adam Ward
 Mr. Adam Waring
 Mr. Samuel Warrian

Mr. and Mrs. Jon Weber
 Mr. Howard Weingrad
 Mr. Marvin Werner
 Mr. Stefan Wichmann
 Mr. Jered Wierzbicki
 Mr. and Mrs. Joseph Williams
 Mr. and Mrs. Ted Williams
 Jon W. Williams, Jr., D.D.S.
 Mrs. June A. Williams
 Mr. Jonathan Wilson
 Mr. Adam Wirtala
 Mr. Clinton Woltering
 Mr. and Mrs. René R. Woolcott
 Mr. Aaron Wright
 Mr. Donald L. Wright
 Ms. Rabia Yazbek
 Dr. and Mrs. Robert C. Young
 Mr. Shiliang Zhang
 Mr. Sean Zimmermann

ORGANIZATIONS

Aldie Glassworks
 Belmont Station
 Budweiser
 CienaCares
 Cindi's Boutique
 Diving Dog Brewhouse
 Fairgrounds LLC
 Fire on the Mountain Buffalo Wings
 Greenstein Delorme & Luchs, P.C.
 MOTE Management Company, Inc.
 Ogle County Sheriff's Office
 PalmerHolland
 Peaks and Pints
 Pershing
 The Virginia Cotillion
 Whiskey Kitchen
 Worldwide Speakers Group

THE PITT SOCIETY

(\$250 to \$499)

Robert H. Pitt was the first chairman of the Foundation's board of directors. His commitment, wisdom and leadership played an instrumental role in the Foundation's growth.

INDIVIDUALS

Mr. Jacob Adams
 Mr. Glen Agar
 Ms. Jessica Aitken
 Mr. Richard A. Alderson
 Mr. and Mrs. James G. Aldigé IV
 Mr. Austin Allen
 Mr. Nicholas Allen
 Mr. Craig Anderson
 Mr. Will Anderson
 Mr. John Anthony
 Mr. James Arbuthnot
 Mr. Marcos Arribas
 Mr. Philip Averill
 Mr. Edmonds Bafford
 Mr. Benjamin Bain
 Mr. and Mrs. Charles W. Ballou
 Ms. Rebecca Baltrusch
 Mr. Robert Baran
 Mr. Cedric Barbez
 Mr. Allan Bard
 Mr. Colin Barrett
 Mr. Steven Barrios
 Mr. Dan Barron
 Mr. Trevor Bart
 Mr. Gabriel Bartee
 Mr. Steven Barto
 Mr. Christopher Baugus
 Mr. Daniel Bauman
 Ms. Sascha Bay

Mr. Samuel Beathard
 Mr. and Mrs. Douglas N. Beatty
 Mr. Gwenhyfar Beaudry
 Mr. Andreas Beckhoff
 Mr. James Bell
 Mr. Marshall Bell
 Mr. Samuel Benner
 Mr. Daniel Bennett
 Mr. Raymond Benson
 Mr. Alexandre Bergeron
 Mr. Ray Bering
 Mr. Josh Berling
 Mr. Adam Biggers
 Mr. David Birks
 Mr. Jarrod Bishop
 Mr. Reid Bixler
 Mr. Bo Bjerregaard
 Mr. Brent Blihovde
 Mr. Ethan Bliss
 Mr. Jackson Bliton
 Mr. Michael Block
 Mr. Benjamin Blum
 Mr. Justin Blum
 Mr. Matthew Blumthal
 Mr. Mark Bocchini
 Mr. Sean Bodwell
 Mr. Michael Boilen
 Mr. Bernhard Bonigl
 Mr. Bob Boring
 Dr. Maarten Bosland
 Mr. Adam Bossart
 Mr. Josh Bothun
 Mr. Louis Boudreaux
 Mr. Michael Bower
 Mr. James Bradfield
 Mr. Alexander Bradley
 Mr. Daniel Bredfeldt
 Mr. Matthew Brenner
 Mr. Charlie Brensinger
 Mr. Kyle Brigman
 Mr. Douglas Britton

Ms. Sherna S. Brody
 Mr. Julien Bross
 Mr. Jason Brown
 Mr. Christopher Bruno
 Mr. Nathaniel Buck
 Mr. John Budorick
 Mr. Eric Buehler
 Mr. Geoffrey Busby
 Mr. Josh Butgereit
 Mr. Tristan C.
 Mr. Brandon Caldwell
 Ms. Elizabeth H. Caldwell
 Mr. Charles Calixto
 Mr. Patrick Callahan
 Mr. and Mrs. Donald R. Calloway, Jr.
 Mr. Charles S. Caminiti
 Mr. James Cantrell
 Mr. Frank Cappelleri
 Mr. Frank Cario
 Mr. Evan Cataldi
 Mr. John Cawthon
 Mr. Jay Chan
 Mr. Justin Chiavacci
 Mr. Bill Clark
 Mr. Edward Clark, Jr.
 Mr. Matthew Clark
 Mr. Michael Clark
 Mr. Stephen B. Clark
 Mr. Brad Clarke
 Mr. Stephen Clouse
 Mr. Erick Cobb
 Mr. Zachary Cogswell
 Mr. H. Colley
 Mr. Nathan Conlon
 Mr. Mark R. Connelly
 Mr. Casey Connor
 Mr. Charles Conrad
 Mr. Michael Cousins
 Mr. James Cregan
 Mr. and Mrs. Kyeson A. Cummings
 Mr. William Dalton

Mr. Xavier Dang
 Mr. Joshua Daniels
 Mr. Robert Danker
 Mr. Greg Danner
 Mr. Eric Dark
 Mr. Brian Davis
 Mr. Wesley Davis
 Mr. Joel Deaguero
 Mr. Donald DeChellis
 Mr. Nathan Deisinger
 Mr. Lawrence F. Del Pizzo
 Mr. Nicholas DeVoll
 Mr. Adam DiFrischia
 Mr. Charles DiLaurenzio
 Mr. Michael Dix
 Mr. Joe Dolan
 Dr. and Dr. Paul C. Domson
 Mr. Bryan Donlan
 Mr. Bryan Donnelly
 Mr. Kyle Dooley
 Mr. Matt Dorner
 Mr. Micah Dowty
 Mr. William Drescher
 Mr. Jérémy Dubut
 Mr. Gregory Dudar
 Mr. and Mrs. William F. Dunbar
 Mr. Leon A. Duncan
 Mr. Neal Dunn
 Mr. Sean Dwyer
 Mr. and Mrs. Edward E. Dyson
 Mr. Andrew Eierman
 Mr. Sharif Elgamal
 Mr. Ryan Elliott
 Mr. Tyler Ellis
 Mr. Devin Engelmann
 Mr. Michael Ennis
 Mr. Andrew Entrekina
 Mr. Damien Erambert
 Mr. W. Kendal Erickson
 Mr. Andrew Ervin
 Mr. Adrian Falcone

| | | | | | |
|---------------------------------|---------------------------------------|---------------------------------|--------------------------------|-------------------------------------|------------------------------------|
| Mr. Steven Falgout | Mr. Bryson Gordey | Mr. Ryan Horlacher | Mr. Joel Kent | Mr. Sam Lawton | Mr. Kevin Marnell |
| Mr. David Falzetti | Mr. Alan Gordon | Ms. Emily Horne | Mr. Jaxon Ketterman | Mr. Jerry Layton | Mrs. Janet A. Martin |
| Mr. Gerald Farmer | Mr. Franck Goudard | Mr. Jeremy Horton | Mr. John Kiffmeyer | Mr. Garrett Leach | Mr. Jesse Martinez |
| Mr. Douglas Fedor | Mr. Jason Grad | Mr. Alex Houston | Mr. Noah Kilian | Mr. Jarno Lehto | Mr. Joshua Martinez |
| Mr. Daniel Fego | Mr. Patrick Gradie | Mr. Sterling Huber | Mr. Daniel Kim | Mr. Matt Leithead | Mr. Joshua Masek |
| Mr. John Fehsenfeld | Mr. Nickolas Grages | Ms. Janet Hudson | Mr. Joseph Kim | Mr. Pascal Leplongeon | Mr. Daniel Masur |
| Mr. Lee Feigenbaum | Mr. and Mrs. Gregory D. Grant | Mr. Christopher Hunt | Mr. Noah Kirby | Mr. Mark Lessard | Ms. Nikita Mathur |
| Mr. Dylan Feldman | Mr. Daniel Grayshon | Mr. David Hunt | Mr. Alexander Kirstein | Ms. Caitlin Leu | Ms. Joan M. Matthews |
| Mr. Michael Fender | Mr. Nicholas Greenly | Mr. and Mrs. Harry I. Hunter | Mr. Ryan Klaproth | Mr. Simon Levasseur | Ms. Kasey Matthews |
| Mr. Sigmund Fidyke | Mr. Richard Griebel | Mr. Brannon Hunter | Mr. Scott Kletzkun | Mr. Jimmy Levesque | Mr. Alex Matuszak |
| Mr. Jeffrey Field | Ms. Tina Grindol | Mr. John Huston | Mr. Chad Knight | Mr. Josh Lewis | Mr. Stephen Mays |
| Mr. Miles Finley | Mr. Karl Guldner | Mr. Michael Ian | Mr. Joseph Knips | Mr. Clinton Lexa | Mr. Terry McCall |
| Mr. John Fischer | Mr. Tyler Gunderson | Mr. Randy Igbinoba | Mr. Zachary Knoles | Mr. Jiaren Li | Mr. Brandon McCannon |
| Mr. Nathan Fitzgerald | Mr. Albin Gustafsson | Ms. Katharina Inzinger | Mr. Chris Knoppert | Mr. Jordan Li | Mr. Philip McClintock |
| Mr. and Mrs. Michael W. Fogarty | Ms. Arin Gutu | Mr. René Isbrecht | Mr. Christopher Knotts | Mr. Anthony LiBrizzi | Mr. Marshall McClure |
| Mr. Stewart Font | Mr. David Guy | Mr. Tom Jackson | Mr. Douglas M. Kocis | Mr. Jacques Lievaux | Mr. Benjamin McCullough |
| Mr. Thomas Foote | Mr. Ronnie Habibian | Mr. David Jacobo | Mr. Antti Kokkonen | Mr. William Litten | Mr. Joseph McDermott |
| Mr. Decklin Foster | Mr. and Mrs. Charles C. Habliston IV | Mr. Brandon Jacobson | Mr. Gabriel Körber | Mr. Jamie Liu | Mr. Michael McDougal |
| Mr. Kenneth Foulston | Mr. Thomas Hahn | Mr. Judah Jacobson | Mr. Britton Kovachevich | Mr. David Lloyd | Mr. Matthew McKay |
| Mr. Landon Fowles | Mr. Stephen Hammack | Mr. Brian Jellison | Mr. Brian Koziel | Mr. Kenneth Long | Mr. Conleth McKeever |
| Mr. Zachary Frasca | Mr. Michael Hanisch | Mr. Brock Jenkins | Mr. Nick Kraayenbrink | Mr. Todd Longendelpher | Mr. Dustin McKenzie |
| Mr. Nick Frigillana | Mr. and Mrs. Bertrand M. Harding, Jr. | Mr. Jeremy Saumen | Mr. Barry Kramer | Mr. Ken Lorraine | Mr. Michael McLaughlin |
| Ms. Kari D. Fry | Mr. and Mrs. William R. Harper, Jr. | Mr. and Mrs. Richard L. Johnson | Mr. Paul Kratt | Mr. Harold Low | Mr. Tim McLennan |
| Mr. Max Führ | Mr. Daniel Harrigan | Mr. Clayton Johnson | Mr. Mark Krawczyk | Mr. Nathan Lowe | Mr. and Mrs. John J. McMackin, Jr. |
| Mr. John Fulmer | Mr. Chris Harris | Mr. Brett Jones | Mr. Gregory Krehely | Mr. Jason Luedtke | Mr. Andrew McMichael |
| Mr. and Mrs. Roger P. Furey | Mr. Joshua Hartwig | Mr. Nicholas Jordan | Mr. Jason Krietsch | Mr. Eugene Luetkenhaus | Mr. Brian McNamara |
| Mr. Kevin Gadd | Mr. Adam Hawk | Mr. Benjamin Kadish | Mr. Ethan Kuperman | Mr. Mike Lundy | Mr. Julius Medrano |
| Mr. Kyle Galloway | Mr. Turner Hayes | Mr. Daniel Kahlfeld | Mr. Matthew L. Lettini | Mr. Michael Lurey | Mr. Phillip Meiser |
| Mr. Dan Gardner | Mr. Marc Heeney | Mr. Jon Kalfayan | Mr. Kael Laan | Mr. Daniel Lyon | Mr. Jason Mellin |
| Ms. Kristina Gardner | Mr. Joshua Heflin | Mr. Cyril Kamowski | Mr. Christopher Ladwig | Mr. Jason Lyons | Ms. Amy Mendel |
| Mr. Peter Garvey | Mr. John Heitmann | Mr. Michael Kamph | Mr. Andrew Laffin | Mr. and Mrs. James B. MacDonald III | Mr. Daniel Mendoza |
| Mr. Jeffrey Gentile | Mr. Michael Hentges | Mr. Andrew Kanciruk | Ms. Cecelia Lance | Mr. Matt Machulskis | Mr. Matthew Menke |
| Mr. Mason George | Ms. Amber Hermanson | Dr. and Mrs. Arthur E. Kane | Mr. and Mrs. Laurent Landau II | Mr. John Mack | Mr. Girish Menon |
| Mr. Christopher Gery | Mr. Andrew Hill | Mr. Peter Kasting | Mr. Steve Landriault | Ms. Rachel Mackenzie | Mr. Matthew Merkle |
| Mr. Ben Glaze | Mr. Jonas Högberg | Mr. Bradley Kearney | Mr. Michael Lang | Mr. Jeffrey MacLellan | Mr. and Mrs. Dennis I. Meyer |
| Mr. Matthieu Glousieau | Mr. David Hohl | Mr. Ira Keener | Mr. Rouven Lange | Mr. Justin Madill | Mr. Alan Meyer |
| Mr. Joel Goetz | Mr. Daniel Holland | Mr. Ben Keilty | Mr. and Mrs. Phillip E. Lantz | Mr. Boris Magnier | Mr. Jeff Meyer |
| Mr. and Mrs. Neil J. Goetzman | Mr. Wesley Holmes | Mr. Michael Kelly | Mr. Will Larsen | Mr. Fredrik Mählström | Mr. and Mrs. Jeffrey S. Mezera |
| Mr. Zachary Goldberg | Mr. Samuel C. O. Holt | Mr. Lawrence Kemp | Mr. Hampus Larsson | Mr. Daniel Mangiarelli | Mr. Michael Mielniczuk |
| Ms. Alexandra Goldman | Mr. and Mrs. Francis J. Hopke | Mr. Patrick Kennedy | Mr. Steven LaRue | Mr. Anthony Manuell | Mr. Nick Milicia |
| Mr. Adam Goldstein | Mr. Jason Hopkins | Mr. Tim Kennedy | Mr. Mark Laubhan | Mr. Brendan Marnell | Mr. Ben Millar |

| | | | | | |
|----------------------------------|-----------------------------------|---|--------------------------------|--|--------------------------------|
| Mr. Aaron Miller | Ms. Yanni Panagiotopoulos | Mr. Sean Robinson | Mr. Joseph Sewell | Mr. Michael Stechele | Mr. Richard Tremblay |
| Mr. Damian Miller | Mr. Sundeep Pandita | Mr. William Robitske | Mr. Brian Sexton | Mr. Kyle Stegner | Mr. Matthew Tropple |
| Mr. Chad Moldon | Mr. Andrew Parent | Ms. Sandra T. Rodriguez and Mr. Roger K. Westerberg | Mr. Jacob Shaak | Mr. Sebastian Stenback Seidel | Mr. Ronald Troyer |
| Mr. Bradley Momberger | Mr. Jae Park | Mr. Jason L. Roelke | Mr. Kevin Sharp | Mr. Kevin Stewart | Mr. Cam Truony |
| Mr. Leo Monelli | Mr. Vishal Patel | Ms. Fil Romero | Ms. Michelle Shepardson | Mr. John A. Stipicevic | Mr. Alex Turkawski |
| Mr. Jonathan Moore | Mr. Sean Patterson | Ms. Alexis Romero Frenzel | Mr. David Sherman | Mr. Richard Stohlman, Jr. | Mr. and Mrs. James Gray Tuttle |
| Mr. Michael Morgan | Ms. Elizabeth C. Patti | Mr. David Rönqvist | Mr. Jarrod Sherwin | Mr. James Stone | Ms. Jane M. Twomey |
| Mr. Liam Morris | Mr. Robert Pavel | Mr. Adam Rosenfield | Mr. Eric Shields | Mr. Tobias Straßhofer | Mr. Darrell Uglean |
| Ms. Jami Morrison | Mr. Benjamin Peake | Mr. Michael Roush | Mr. Youngcheol Shin | Mr. Kevin Strehl | Mr. Robert Ulmet |
| Ms. Madeline Movesian | Mr. Anthony Penta | Mr. and Mrs. Clifford H. Routh | Mr. Jarrod Shrader | Mr. Brandon Struthers | Mr. Chris Umbdenstock |
| Mr. Jacob Muehlberg | Mr. Chris Peters | Mr. Kevin Roy | Mr. Blake Shuster | Mr. David Stuart | Mr. James Vallieres |
| Mr. Thomas Mueller | Mr. Robert Pettys-Baker | Mr. Robert Roy | Mr. Balaji Shyamsundar | Ms. Jules Stuart | Mr. and Mrs. Bill A. Van Wie |
| Ms. Danina Müller | Mr. Michael Piontek | Mr. Aaron Royer | Mr. and Mrs. Calvert Simmons | Mr. James Studt | Mr. Ryan Vanlandingham |
| Mr. Chad Murders | Mr. Samuel Pittman | Mr. Adam Rubin | Mr. John Simon | Mr. Jay R. Sullivan and Ms. Mary George | Mr. Thomas Vartanian |
| Mr. Daniel Murnane | Mr. Jacob Plovanic | Mr. Benjamin Ruby | Ms. Elaine Simone | Mr. and Mrs. Thomas M. Sullivan | Mr. Thomas Vazquez |
| Mr. Grant Murphy | Mr. Jeremy Pluym | Mr. David Rutter | Mr. Christopher Simpson | Mr. William D. Sullivan | Mr. Jacob Vega |
| Mr. Jeremiah Murphy | Mr. Zavian Porter | Mr. Kyle Sakai | Mr. Ethan Simpson | Mr. Steven Sundrud | Mr. Kevin Velado |
| Mr. Daniel Murray | Mr. Michael Potts | Mr. Daniel Saliccioli | Mr. Joshua Singh | Mr. Juha Suvanto | Mr. Vincent E. Verrocchio |
| Mr. Terrence Narayan | Mr. Matthew Putnam | Mr. Brandon Saldanha | Mr. Pawan Singh | Mr. Justin Svetlik | Mrs. Marisa Vertrees |
| Mr. Lothar Narins | Mr. Naram Qashat | Mr. Joel Sampaio | Mr. Ryan Sit | Mr. Wesley Sweeney | Ms. Elizabeth G. Verville |
| Mr. Sharif Nasr | Ms. Zoe Quinn | Mr. William Sanders | Mr. Fredrik Sivertsen | Mr. Robert Tadeo | Mr. Chris Vorndran |
| Mr. Mark Nauta | Ms. Melissa Ralston | Mr. Brent Saner | Mr. Nathanael Skerbin | Mr. Corey Tallman | Mr. Tyler Wade |
| Mr. Michael Neligh | Mr. Jeffrey Rampe | Mr. Manuel Sarter | Mr. Peter Sloan | Mr. Alexandre Tan | Mr. Lewis Wall |
| Mr. Jeff Nelson | Mr. Andrew Ramsay | Ms. Jody Saunder | Mr. Albert Smith | Mr. Patrick Tandler | Mr. David Ward |
| Mr. and Mrs. James New | Mr. Joseph Rard | Mr. James Sayers | Mr. Kristopher Smith | Mr. Adrien Tanguidé | Ms. Nicole Ware |
| Mr. Mike Nielsen | Mr. and Mrs. Heinrich Ratz | Mr. Mark Schaadt | Mr. Josh Smith Cohen | Friends of John Tanner | Mr. Matthew Warner |
| Mr. Mark Niese | Mr. Justin Rawson | Mr. Max Scheinberg | Mr. Joshua Smolow | Mr. Jaymes Taylor | Mr. John Washam-Morgan |
| Mr. Michael Nix | Mr. Scott Redig | Mr. Stephen Schiber | Mr. Jeffrey Soirefman | Mr. Paul Taylor | Mr. Scott Wasserman |
| Mr. Nathan Noble | Mr. Richard Rees | Mr. Eric Schmoeller | Mr. Kyle Solomon | Mr. Roger Tedelind | Mr. Kyle Weber |
| Mr. Dominik Nouvertné | Mr. and Mrs. Thomas L. Regnell | Mr. Jon Schneeweiss | Ms. Kirran Somerlade | Mr. Alex Thaler | Mr. Adam Westall |
| Mr. Jacob Oberman | Mr. and Mrs. Terrence E. Reideler | Mr. Andrew Schoonmaker | Mr. Harald Sonhueter | Mr. William P. Thomas and Ms. Veronique G. Perarnaud | Mr. Benton Whaley |
| Mr. and Mrs. Charles P. O'Connor | Mr. Justin Renga | Mr. Adam Schrader | Mr. Eric Sorcek | Mr. Harry L. Thomas, Jr. | Mr. Clayton Whitelaw |
| Mr. Corey O'Connor | Mr. James Rennie | Mr. Stephen Schreiner | Mr. Bret Sorensen | Mr. Cole Thompson | Mr. Gregory Wicklund |
| Mr. Kevin Oelze | Mr. Jose Reyes Arias | Mr. Collin Schuck | Mr. Joshua Spencer | Mr. Dan Thompson | Mr. Mathias Wilén |
| Mr. Zachary Oldson | Mr. William Reznak | Mr. Cody Schuffelen | Mr. and Mrs. Joseph G. Spitzer | Mr. Iain Thomson | Mr. Samuel Wilkinson |
| Mr. Daniel Ordille | Mr. Robert Richardson | Mr. Benjamin Schwartz | Mr. Brian Scott Spitzer | Mr. James Tobin | Ms. Karen Willey |
| Mr. Justin Owen | Mr. Elliot Rieflin | Mr. Carmen Schwesinger | Mr. Russell Spitzer | Mr. Joshua Tolliver | Mr. Christopher Williams |
| Mr. Mike Owen | Mr. and Mrs. Thomas E. Riley | Mr. Chris Scott | Mrs. Joyce A. Spracklen | Ms. Adrienne Tompkins | Ms. Anne Wilson |
| Mr. Michael Pack | Mr. Paul Riley | Mr. Kelly Scott | Ms. Rebecca Sprang | Ms. Rachel Tougas | Mr. Lindsey Wilson |
| Mr. Adrian Packel | Mr. Walt Rinehart | Ms. Patricia Scrocco | Ms. Christine Starkey | Mr. Linus Trane | Ms. Laura Winfrey |
| Mr. Derek Palecek | Mr. Geoffrey Riutta | Mr. Patrick Secrist | Mr. Roy T. Starry, Jr. | | Mr. Andrew Wise |

Mr. Kevin Wolf
 Mr. Arthur Wong
 Mr. Brian Woodhull
 Ms. Enid Woodward
 Mr. Robert Wooten
 Mr. Daniel Worthy
 Mr. Joel Wurtz
 Mr. Michael Xavier
 Mr. Andrew Yates
 Ms. Ketrina Yim
 Mr. Alex Yoo
 Mr. Jason P. York
 Mr. Reid Young
 Ms. Katie Yuill
 Mr. Jose S. Zaragoza
 Ms. Jan Zollikofer

ORGANIZATIONS

The Abram C. Becker Fund of In
 Faith Community Foundation
 American Bankers Association
 Baird Foundation
 Bank of America Charitable
 Foundation
 Billy Jack's Wing and Draft Shack
 Capitol Beer & Tap Room
 Congregation Ale House
 The Flying Goat
 Freshcraft
 The Happy Gnome
 McEneaney Associates, Inc.
 Red Crow
 Reese, Yeatman & Associates, Inc.
 Tap & Bottle Company LLC

BENEFICIARY EVENTS

Individuals and organizations select the Prevent Cancer Foundation to be the beneficiary of funds raised through an event they organize and host. Beneficiary events vary in size and type, and include everything from lemonade stands, art shows, water ski competition and online video games, to silent auctions.

AEG

Breakaway from Cancer
 Awesome Games Done Quick
 Brandford High School Anime Club
 BTIG, LLC
 Deckerville Community Hospital
 Drivewise Auto
 Figdor "Bad Beat on Cancer" Poker
 Tournament
 iHeartMedia, Inc.
 Jesse James & Co.
 LA Kings
 Mahood Wedding
 Manheim, Inc. Pumpkin Carving
 Contest
 No Shave November
 Palmer Edu, Inc.
 Partners for a Cure
 Patient Advocate Foundation
 Pinball Done Quick
 The Frank J. Romano Foundation
 Volkswagen Group of America
 VP Racing Fuels, Inc.
 ZD Wines

IN-KIND DONORS

The following donors have supported the Prevent Cancer Foundation with in-kind gifts and services during the year.

INDIVIDUALS

His Excellency, the Ambassador of
 Azerbaijan, Elin Suleymanov, and
 Mrs. Suleymanov
 Her Excellency, the Ambassador of
 Hungary, Dr. Réka Szemerkenyi,
 and Mr. Szabolcs Ferencz
 His Excellency, the Ambassador of
 Italy, Armando Varricchio, and
 Mrs. Varricchio
 His Excellency, the Ambassador of
 Liechtenstein, Kurt Jaeger, and
 Mrs. Jaeger
 His Excellency, the Ambassador of
 Portugal, Domingos Fezas Vital,
 and Mrs. Vital
 His Excellency, the Ambassador of
 the Russian Federation, Sergey
 Kislyak, and Mrs. Kislyak
 His Excellency the Ambassador of
 Switzerland, Martin Dahinden, and
 Mrs. Dahinden
 Mr. and Mrs. James G. Aldigé III
 Ms. Catherine P. Bennett and
 Mr. Fred Frailey
 Ms. Jan Bresch
 The Honorable Jennifer and
 The Honorable Ronald Christie
 Mr. and Mrs. Peter J. FitzGerald
 Mr. and Mrs. Craig Fuller
 Mr. and Mrs. Bruce A. Gates
 Mr. Phil Gordon
 Dr. Ann Kulze
 Mr. Michael Leemhuis
 Ms. Deborah Lowham
 Mr. and Mrs. Gary R. Lytle
 Mr. Frank Mermoud and
 Mr. Ned Shannon

Mr. Michael Meyer
 Ms. Joann Piccolo and
 Mr. Timothy Carmody
 The Honorable Pat Roberts
 Mr. David Tuter
 Mr. and Mrs. D. Anderson Williams
 Ms. Gloria Zhang

ORGANIZATIONS

Affordable Signs
 Alton Lane
 Arena Stage
 Athena Water
 Blank Label
 Caesars Entertainment
 College Hunks of NOVA
 DCanter – A Wine Boutique
 Design Cuisine
 The Dylan Amsterdam
 Ermenegildo Zegna
 Everyman Theatre
 Fendi
 Ferrari of Washington
 Flywheel Sports
 Ford's Theatre
 Giant
 The Hamilton DC
 Hermès of Paris
 Hilton McLean Tysons Corner
 Honest Tea
 The Hour
 I Ricchi
 Irene Abdou Photography
 The Jane Goodall Institute
 John Rutledge House Inn
 Lovington Winery
 Marriott Renaissance Harborplace
 Hotel
 Mindy Lam Couture
 Montana Winery
 New Tang Dynasty
 Obelisk DC
 Occasions Caterers
 Old Oak Cellars
 Outside the Lines Pet Photography
 Paradigm Event Management
 PUNI Distillery
 Radiance
 Regione Piemonte
 Renato Miracco
 Reston Limousine
 Ristorante Tosca
 Save the Date, LLC
 Shakespeare Theatre
 Singing Sands Inn
 Southwest Airlines
 The St. Gregory Hotel DC
 Station 4 DC
 Subway
 Thomas D. Mangelsen Gallery
 Toscana Saporita Cooking School
 Total Wine & More
 The W Hotel DC
 Warner Theatre
 Washington Ballet
 Washington Kastles
 Wegmans
 Wells Fargo

FOUNDATION

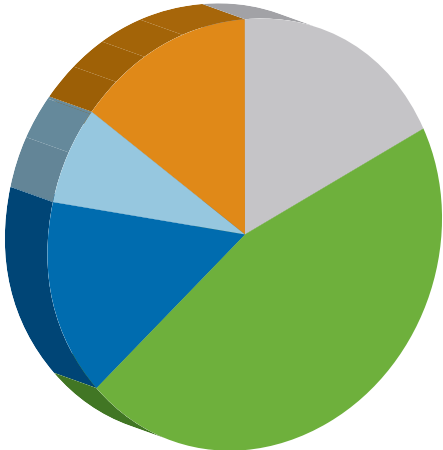


IN THE NEWS



STATEMENT OF FINANCIAL POSITION FOR THE YEAR ENDING JUNE 30, 2017

| | | | |
|---|-------------------|---|-------------------|
| ASSETS | | LIABILITIES | |
| CURRENT ASSETS | | CURRENT LIABILITIES | |
| Cash and Cash Equivalents | 1,991,292 | Accounts Payable and Accrued Expenses | 170,394 |
| Accounts and Pledges Receivable | 157,705 | Deferred Income | - |
| | 2,148,997 | Grants Payable | 1,057,907 |
| | | | 1,228,301 |
| INVESTMENTS | | LONG-TERM LIABILITIES | |
| General | 3,412,373 | Deferred Rent | 12,904 |
| Donor Restricted and Board Designated Funds | 6,560,170 | Charitable Gift Annuities | 59,911 |
| | 9,972,543 | Deferred Compensation | 234,959 |
| | | | 307,774 |
| PROPERTY | | TOTAL LIABILITIES | |
| Office Furniture and Equipment | 184,148 | | 1,536,075 |
| Accumulated Depreciation | (73,344) | NET ASSETS | |
| TOTAL PROPERTY ASSETS | 110,804 | Unrestricted | 9,481,222 |
| | | Temporarily Restricted | 1,902,231 |
| OTHER ASSETS | | Permanently Restricted | 278,413 |
| Prepaid Expenses | 57,376 | | 11,661,866 |
| Deposits | 28,636 | TOTAL LIABILITIES AND NET ASSETS | |
| Charitable Gift Annuities | 190,199 | | 13,197,941 |
| Interest in Remainder Trusts | 454,427 | | |
| Deferred Compensation Plan | 234,959 | | |
| | 965,597 | | |
| TOTAL ORGANIZATION ASSETS | 13,197,941 | | |



STATEMENT OF ACTIVITIES AND CHANGES IN NET ASSETS

| | | | |
|---|------------------|--------------------------------------|-------------------|
| SUPPORT AND REVENUE | | EXPENSES | |
| Contributions | 2,419,540 | Programs | |
| Bequests and Other Income | 238,527 | Research | 1,368,893 |
| Investment Income | 966,956 | Eduaction and Public Awareness | 3,379,908 |
| In-kind Contributions | 297,912 | Community Outreach | 1,138,359 |
| Special Events | 4,235,381 | Management and General | 504,434 |
| Less: Costs of Direct Benefit to Donors | (233,752) | Fundraising | 1,037,515 |
| TOTAL SUPPORT AND REVENUE | 7,924,564 | TOTAL EXPENSES | 7,429,109 |
| | | Change in Net Assets | 495,455 |
| | | Net Assets, Beginning of Fiscal Year | 11,166,411 |
| | | NET ASSETS, END OF YEAR | 11,661,866 |

1600 Duke Street, Suite 500 | Alexandria, VA 22314
Phone: 703.836.4412 | Fax: 703.836.4413 | Toll-free: 800.227.2732
www.preventcancer.org