



2018 ANNUAL REPORT

**STOP CANCER** BEFORE IT STARTS!<sup>®</sup>



***Stop Cancer Before It Starts!®***

## SENIOR STAFF

Carolyn R. Aldigé  
Founder and CEO

Karen Peterson, Ph.D.  
Vice President, Programs

Lisa Berry Edwards  
Managing Director, External Affairs

Janet Hudson  
Managing Director, Development

Amy Sokal  
Managing Director, Finance and Administration

Lisa M. McGovern  
Executive Director, Congressional Families  
Cancer Prevention Program®

## TABLE OF CONTENTS

---

The Prevent Cancer Foundation® is one of the nation's leading voluntary health organizations and the only U.S. nonprofit organization focused solely on cancer prevention and early detection. Founded in 1985, it has catapulted cancer prevention to prominence and fulfills its mission through research, education, outreach and advocacy.

2	BOARD OF DIRECTORS
3	LETTER FROM THE CEO AND BOARD CHAIR
4	WHO WE ARE AND WHY WE'RE HERE
6	RESEARCH Inspiring a New Generation of Research Our Global Reach
14	EDUCATION <i>Think About The Link®</i> Check Your Mate® Quantitative Imaging Workshop Dialogue For Action®
20	ADVOCACY
22	OUTREACH Community Grants <i>¡Celebremos la Vida!</i> Breast Health Education Prevent Cancer Super Colon®
26	SIGNATURE EVENTS Annual Spring Gala Congressional Families Luncheon Awesome Games Done Quick Health Fair and 5K Walk/Run
31	DONOR SPOTLIGHTS
34	WAYS TO GIVE
35	FOUNDATION IN THE NEWS
36	MEDICAL ADVISORY BOARD AND SCIENTIFIC REVIEW PANEL
38	OUR DONORS
Back page	FINANCIAL STATEMENT

## BOARD OF DIRECTORS



Carolyn R. Aldigé  
Founder and CEO



Gary R. Lytle  
Chairman



Joann Piccolo  
Vice-Chairman



James L. Mulshine, M.D.  
Vice-Chairman,  
Scientific Director



Kathryn West  
Secretary



Brock Landry  
Treasurer



The Hon. Ron Christie



Vic Fazio



Drew Figdor



Jeremy Hardy  
FitzGerald



Lilibet Hagel



Charles S. Houser



Joel Jankowsky



Mia Spiker Johnson



Peter Levin, Ph.D.



William Magner



Sheri Peterson  
McGrath



Scott McIntyre

### Sustaining Directors

Betty Alewine  
Michael F. Brewer  
Karen D. Fuller  
Joyce H. Gates  
Gordon (Don) Hutchins  
Marcelle Leahy  
Jean Perin  
Andrea Roane  
George Swygert  
David Tutera  
Margaret Vanderhye  
Virginia A. Weil

### Emeritus Directors

David S. Alberts, M.D.  
Catherine P. Bennett  
Margaret Bush  
Marcia Myers Carlucci  
Elmer E. Huerta, M.D., MPH  
Alexine Clement Jackson

### Founding Directors

Alan P. Dye  
Harold M. Keshishian\*

\*DECEASED



Lynne O'Brien



Pawan Singh



Jason Van Pelt



“As you know, cancer prevention and screening are my passion, despite my training as a medical oncologist in the early 1990s. A lot has changed since those early days when I was a new NCI Cancer Prevention Fellow, the Prevent Cancer Foundation was launched, and it was rather aspirational to put ‘cancer’ and ‘prevention’ in the same sentence.

It is now a tremendously broad and impactful field with huge opportunities in research, clinical care delivery, education/ training, and evidence-based actions implemented at the population-level.”

— Ernest Hawk, MD, MPHVP for Cancer Prevention & Head, Division of Cancer Prevention & Population Sciences  
T. Boone Pickens Distinguished Chair for Early Prevention of Cancer  
The University of Texas MD Anderson Cancer Center

Dear Friends,

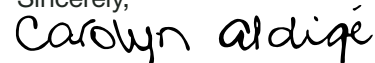
So many lives continue to be affected by cancer—the more than 1.7 million Americans diagnosed each year, along with their caregivers, families, friends and co-workers. We have both personally felt the devastating effects of this disease; each of us was touched directly by the loss of a close family member and each of us honors their memory through our work with the Prevent Cancer Foundation®.

We believe that prevention and early detection must remain at the forefront of the conversation—and result in action.

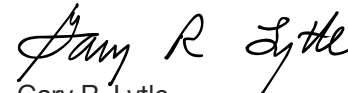
Thanks to your support, we are able to fund early-career researchers at leading medical institutions; community projects from California to Virginia; educational campaigns and materials to reduce health disparities; and international programs that provide critical services in Ghana, Kenya and Mozambique.

When it comes to supporting charities, we know you have many worthy choices, which makes your partnership all the more special to us. We look forward to continuing to work together to *Stop Cancer Before It Starts!*®

Sincerely,



Carolyn R. Aldigé  
Founder and CEO



Gary R. Lytle  
Chairman of the Board

## WHO WE ARE



Our mission is saving lives across all populations through cancer prevention and early detection. Our vision is to *Stop Cancer Before It Starts!*®

The Foundation is at the forefront of cancer prevention and early detection and has been referred to as “the candle that ignited a bonfire.”

## WHY WE'RE HERE

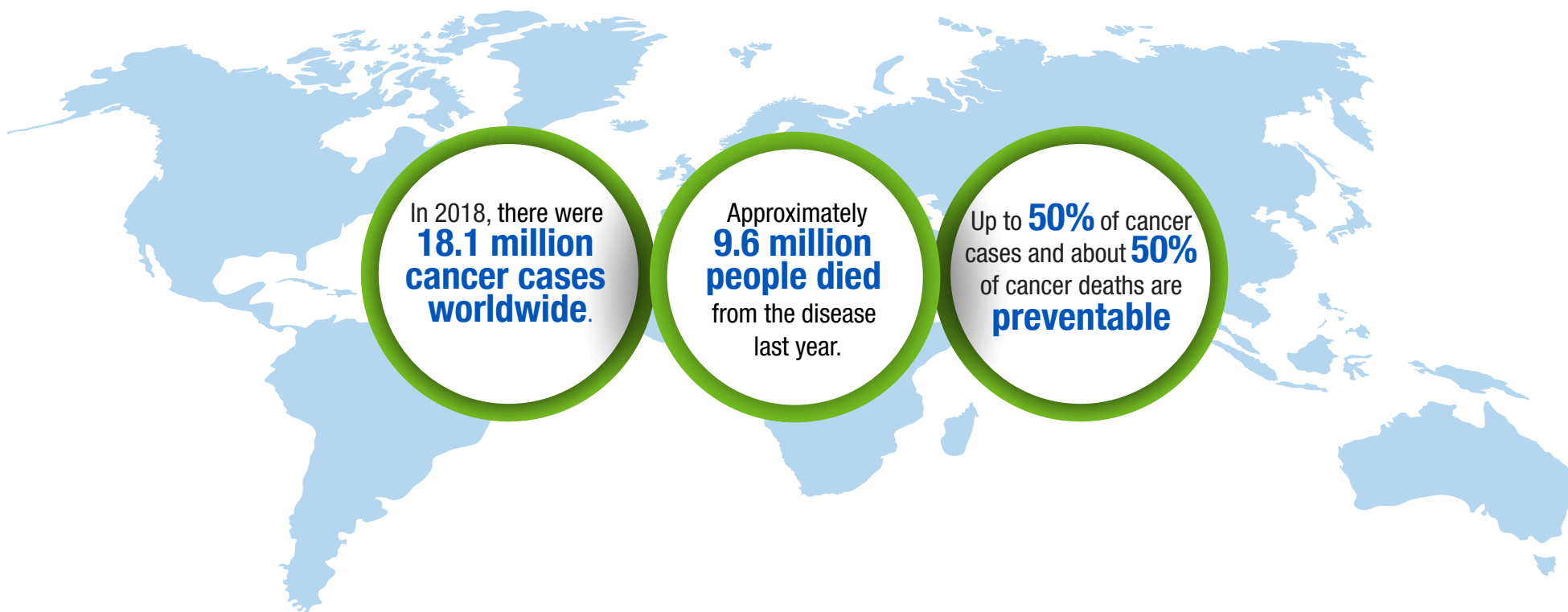
---

Cancer knows no bounds. It is a disease that doesn't discriminate against age or gender. It crosses political lines and socioeconomic levels. It impacts those living in the richest countries and those in the poorest.

In 2018, there were 18.1 million cancer cases worldwide. Approximately 9.6 million people died from the disease last year.

Research shows that up to 50 percent of cancer cases and about 50 percent of cancer deaths are preventable with the knowledge we have right now. We need to prioritize prevention and early detection so that we can decrease cancer incidence and diagnose the disease early, when a successful outcome is more likely.

Together, we can create a future in which cancer no longer claims millions of lives each year.





## INSPIRING A NEW GENERATION OF RESEARCH

### Grantee

Sigrid Carlsson, M.D.

### Named Award

The Marvin Davis Estate  
Research Grant

### Position

Assistant Attending  
Epidemiologist

### Institution

Sloan Kettering Institute for  
Cancer Research, New York, NY

### Project Title

Optimizing prostate cancer screening  
through the electronic health record

Primary care physicians need guidance in talking to patients about “shared decision making” and “smarter” prostate cancer screening in a way that saves lives and avoids treating slow-growing tumors. Dr. Carlsson will develop a computer system tool to help doctors facilitate discussions about the benefits/harms of prostate cancer screening.



### Grantee

Varun Chandrashekar, Ph.D.

### Institution

Joan & Sanford I. Weill  
Medical College of Cornell  
University, New York, NY

### Project Title

Prevention of HNSCC by using  
receptor selective agonists

There is a strong need for better preventive approaches for head and neck cancers. Dr. Chandrashekar's team has shown that one type of retinoid (vitamin A derivative) drug can prevent tumor formation in a mouse model of this cancer. They will explore if a combination of retinoids will have greater cancer preventive effect.





**Grantee**

Sho Kitamoto, Ph.D.

**Named Award**

The Marvin Davis Estate  
Research Grant

**Institution**

University of Michigan,  
Ann Arbor, MI

**Project Title**

The role of oral pathobionts  
in the development of  
colon cancer



Dr. Kitamoto is hoping to clarify whether genotoxic bacteria residing in the oral cavity promote colon cancer development. If successful, the detection/clearance of genotoxic bacteria in the mouth could be useful for the early detection and prevention of colon cancer.

**Grantee**

David C Montrose, Ph.D.

**Named Award**

Prevent Cancer Foundation Board  
of Directors Research Fund

**Institution**

Joan & Sanford I. Weill Medical  
College of Cornell University,  
New York, NY

**Project Title**

Modulating the microbiota and  
metabolome for gastrointestinal  
cancer prevention



Dr. Montrose and his team will investigate whether changing the types of bacteria or the small molecules they produce can prevent the formation of pre-cancerous polyps in the intestine by affecting stem cell function. These studies have the potential to lead to novel approaches for colon cancer prevention.

## INSPIRING A NEW GENERATION OF RESEARCH

### Grantee

Christopher J. Recklitis, Ph.D.

### Named Award

Awesome Games Done Quick  
Research Grant

### Institution

Dana-Farber Cancer Institute,  
Boston, MA

### Project Title

SunSmart: Preventing  
secondary skin cancer in young  
adult cancer survivors



Young adult cancer survivors have an elevated skin cancer risk, but often do not practice sun protection to reduce this risk. By testing SunSmart, a sun protection education intervention targeting young adult cancer survivors, this study can prevent future skin cancers in this high-risk population.

### Grantee

Qinggong Tang, Ph.D.

### Named Award

Awesome Games Done Quick  
Research Grant

### Institution

University of Oklahoma,  
Oklahoma City, OK

### Project Title

Early cancer detection by  
multi-modal endoscopic optical  
system



Colorectal cancer is the third most common form of cancer diagnosed in both men and women in the United States. Dr. Tang and his team are developing an endoscopic multi-modality optical imaging system for early colon cancer detection, which can improve survival rates.

#### Grantee

Trang VoPham, Ph.D.

#### Named Award

The Richard C. Devereaux  
Outstanding Young Investigator

#### Institution

Brigham and Women's Hospital,  
Inc., Boston, MA

#### Project Title

Reducing PM2.5 exposure and  
lung cancer risk using spatial  
data science



Fine particulate matter air pollution (PM2.5) is a known lung cancer risk factor. Using spatial data science, Dr. VoPham and her team will develop a PM2.5 forecasting system and propose an educational and behavioral intervention to reduce personal PM2.5 exposure, reduce lung cancer risk, and ultimately, prevent cancer.

“I was offered a faculty position as Assistant Member (equivalent to Assistant Professor) of Epidemiology at the Fred Hutchinson Cancer Research Center in Seattle, WA! The Fred Hutch was very impressed that I was able to receive a Prevent Cancer Foundation fellowship grant. This grant was one of the reasons that led me to receive this great job offer.”

— Trang VoPham, Ph.D., M.S.

## OUR GLOBAL REACH

The Prevent Cancer Foundation® has partnered with the Union for International Cancer Control (UICC) to fund International Community Leadership Grants. The grants are designed to inspire regional collaborations and provide opportunities to work together to meet the needs of the region.

The first five grants, focusing on Latin America, were awarded in December 2017 to the following select individuals and their organizations:



**Adela Ayensa**

Salvati AC, Mexico

**Host institution**  
FEMAMA, Brazil

**Project Title**  
Your moment to fight (Tu momento de luchar)

**Focus**  
Advocacy for metastatic breast cancer patients



**Alexandra Nuñez**

Asociación Tour Rosa de Costa Rica, Costa Rica

**Host institution**  
Instituto Desiderata, Brazil

**Project Title**  
Project Hope, united against cancer (Proyecto Esperanza unidos contra el cáncer)

**Focus**  
Education, advocacy and policy for early detection and treatment of cancer



**Ana Rodríguez**

Comisión Honoraria de Lucha Contra el Cáncer, Uruguay

**Host institution**  
Asociación Mexicana de Lucha contra el Cáncer, Mexico

**Project Title**  
Improve leadership skills and organizational management

**Focus**  
Organizational management during restructure and improving local, national and international engagement



**Lisseth Ruiz de Campos**

Asociación Salvadoreña para la Prevención del Cáncer (ASAPRECAN), El Salvador

**Host institution**  
Liga Argentina de Lucha Contra el Cáncer (LALCEC), Argentina

**Project Title**  
Learn to grow

**Focus**  
Strengthening fundraising efforts and improving online communication skills



**Neli Padilla**

Asociación Hondureña de Lucha Contra el Cáncer, Honduras

**Host institution**  
Registro Poblacional de Cáncer de Cali, Colombia

**Project Title**  
Knowledge of practices, procedures and methodology of the Cali Population-based Cancer Registry

**Focus**  
Improve data quality in hospital registry



## No woman should die of cervical cancer

In Mozambique, cervical cancer is the number one cause of cancer death in women.

It is a disease that has become much less common in the United States. The development of the Pap test, coupled with the introduction of organized screening programs, has led to a 70 percent decrease in cervical cancer incidence and mortality rates in the last 60 years in the U.S. and other high-income countries. But cervical cancer remains one of the most common cancers among women in low-income countries. A lack of resources and trained specialists means women do not receive the screenings and education that could save their lives.

### That's where Project ECHO® comes in.

This program—which stands for Extension for Community Health Outcomes—provides hands-on training, education and ongoing telementoring to health care providers in Mozambique so they can better educate, screen and treat women for cervical cancer. The Prevent Cancer Foundation® is funding a two-year, \$200,000 grant to make this work possible.

Project ECHO® was developed in 2003 by Dr. Sanjeev Arora, a hepatitis C specialist at the University of New Mexico, to improve provider capacity and access to specialty care for rural and underserved populations. ECHO links multidisciplinary specialist teams with community primary care clinicians through videoconferencing to co-manage patient cases.

This approach has enabled clinicians in medically underserved areas to develop the skills, confidence and knowledge to treat patients with common, complex diseases in their own communities.

The Prevent Cancer Foundation® is proud to partner with Project ECHO® to save lives in Mozambique with cancer prevention and early detection.



**“Cervical cancer is a preventable disease. No woman should die of cervical cancer, yet that is what I see every day in my clinic and what happens around the world. We need to vaccinate our children against HPV and screen every woman to prevent cervical cancer. We are working hard to educate and train health care providers and policy makers to make this happen.”**

—Kathleen Schmeler, M.D., Department of Gynecologic Oncology & Reproductive Medicine at The University of Texas MD Anderson Cancer Center

## OUR GLOBAL REACH

The Foundation funds a series of Technical Fellowships focusing on rapid transfer of knowledge and technology in cancer prevention and early detection. The program was initiated through a partnership with the Union for International Cancer Control (UICC), an international nonprofit organization. The majority of awarded fellows come from low- and middle-income countries.



**Dr. Aroor Bhagyalaxmi**

B. J. Medical College  
India

**Area of study**

Prevention of initiation of smokeless tobacco consumption among rural children of Gujarat, India

**Host institution**

Johns Hopkins University, Bloomberg School of Public Health, United States



**Bayan Hosseini**

Tehran University of Medical Sciences  
Iran

**Area of study**

Occupational exposure and risk of lung cancer

**Host institution**

International Agency for Research on Cancer, France



**Dr. Bettina Meiser**

University of New South Wales  
Australia

**Area of study**

Culturally-sensitive decision tools for genetic testing for breast/ovarian cancer

**Host institution**

Cancer Research Malaysia, Malaysia



**Dr. Christos Nikolaidis**

University of Basel  
Switzerland

**Area of study**

Cascade screening for Lynch Syndrome

**Host institution**

Ohio State University Comprehensive Cancer Center, Arthur G. James Cancer Hospital and Richard J. Solove Research Institute of the Wexner Medical Center, United States



**Dr. Georgia Ambada Ndzengue**

Chantal Biya International Reference Center  
Cameroon

**Area of study**

The importance of immunophenotyping in the diagnostics and treatment of hemato-oncologies in Cameroon

**Host institution**

University Hospital Center, Geneva, Switzerland



**Dr. Patumrat Sripan**

Chiang Mai University  
Thailand

**Area of study**

Cervical and breast  
cancer screening in  
Northern Thailand

**Host institution**

Agency for Research on  
Cancer (IARC), France



**Dr. Louis Ngendahayo**

Kamenge University  
Hospital Center  
Burundi

**Area of study**

Capacity building in  
diagnostics and cancer  
immunohistochemistry  
techniques

**Host institution**

University Hospital  
Center in Cocody,  
Ivory Coast



**Dr. Sambit  
Manoranjan Nanda**

Galaxy CARE  
Laparoscopy Institute  
India

**Area of study**

Diagnosis and  
treatment of ovarian  
cancers

**Host institution**

Justic-Liegig University  
Giessen, Germany



**Olalekan Abisola Ajayi**

Department of  
Community Medicine,  
Ladoke Akintola  
University of Technology  
Teaching Hospital  
Nigeria

**Area of study**

Androgen and epidermal  
growth factor receptors in  
breast cancer patients

**Host institution**

University Hospitals  
Birmingham NHS  
Foundation Trust, Queen  
Elizabeth Hospital  
Birmingham,  
United Kingdom



**Mr. Joshua Menang**

Cameroon Laboratory  
& Medicine Foundation  
Health Centre  
Cameroon

**Area of study**

Breast Cancer  
Awareness in female  
Cameroon teenagers and  
women

**Host institution**

University of Colorado  
Anschutz Medical  
Campus, United States



**Dr. Tung Thanh Pham**

Hanoi Medical University  
Vietnam

**Area of study**

Physical activity  
guidelines and  
intervention in cancer  
patients

**Host institution**

Harvard School of Public  
Health, United States



### Alejandro Escovedo on tour

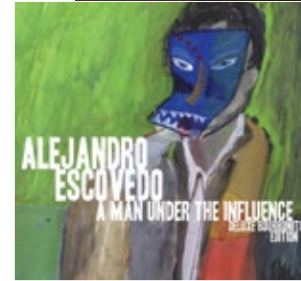
A passion for music and cancer prevention collided when *Think About the Link*® spokesperson and musical artist **Alejandro Escovedo** launched a 14-city concert tour. The tour showcased his 2001 album, *A Man Under the Influence*, in its entirety, providing the audience with a memorable musical experience that included an educational twist—raising awareness of viruses that can lead to cancer.

Alejandro seamlessly wove his personal battle with hepatitis C into his performance. He didn't shy away from sharing the agonizing details of his 20-year battle with the virus, which intensified due to his lack of medical insurance at that time, and his road to recovery. Alejandro never developed cancer, but he is one of the fortunate ones—hepatitis C is a leading cause of liver cancer.

Now cured of his hepatitis C (“hep C free”), Alejandro is using his music to spread the word about getting tested and treated for hepatitis C to prevent cancer. Now that's something to sing about!



Alejandro Escovedo shared his story of survival at the Prevent Cancer Annual Spring Gala. Pictured here with his wife Nancy and Carolyn Aldigé.





## Marissa Jaret Winokur lights up Times Square

Tony Award-winning actress and cervical cancer survivor Marissa Jaret Winokur continues to serve as a spokesperson for *Think About the Link*®. Now cancer-free, her mission is to educate people about the importance of the HPV vaccine to prevent cancer.

“When I was young, the HPV vaccine wasn’t available, and neither was the HPV test,” she says. “People today can protect themselves from cancer, but they have to know their options. That’s why I tell everyone about the link between HPV and cancer, and to speak with your doctor about getting vaccinated and screened so you don’t have to go through what I did.”

Marissa was featured on a digital billboard in the summer of 2018, strategically positioned in the heart of Times Square Plaza, also known as “The Gateway to New York.” Her message reached more than a million people each day!



### Calling on health care professionals to take the pledge

The Prevent Cancer Foundation® and *Think About the Link*® are calling on all health care professionals to take the pledge and talk to their patients about the HPV vaccine to prevent cancer. More than 60 percent of parents surveyed say their children's pediatricians have not stressed the importance of getting the HPV vaccine.

Research shows that health care professionals have significant influence on a patient's decision to get the HPV vaccine for cancer prevention, or in the case of young patients, the parents' decision. However, many health care professionals are not recommending the HPV vaccine to all their patients who meet the CDC guidelines.

**Take the pledge.**

**Let's Stop Cancer Before It Starts!®**

**Learn more at [www.thinkgaboutthelink.org/pledge](http://www.thinkgaboutthelink.org/pledge)**

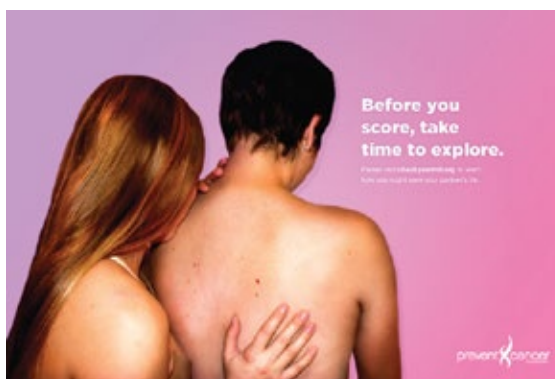
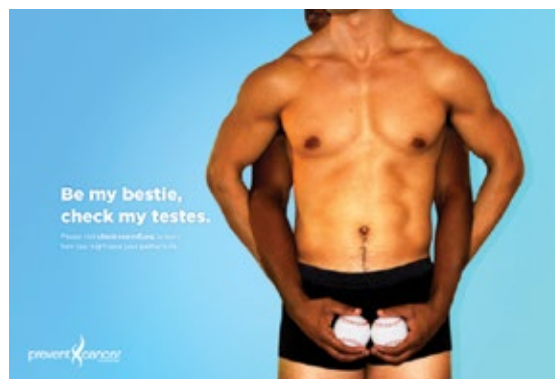
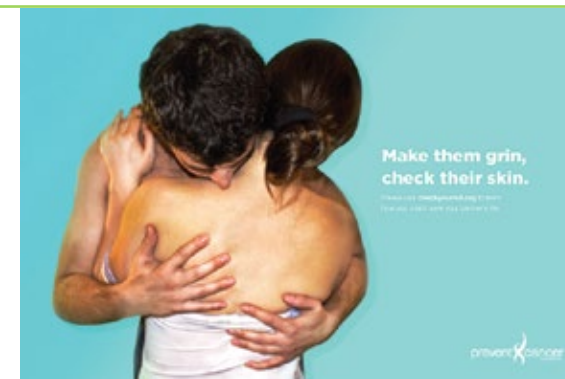


## Check Your Mate®

Check Your Mate began as a social media campaign that encouraged people to check their partners' bodies for signs of breast, skin or testicular cancer.

Since launching on Valentine's Day in 2014, the campaign has received millions of impressions. It has gone viral on social media, appeared on billboards in Times Square and been covered by major media outlets, including MSN, Forbes and Shape magazine.

**Your partner may know your body better than you do. Don't forget to Check Your Mate for any irregularities that could be early signs of cancer.**







### **Quantitative Imaging Workshop XIV: Lung cancer, COPD and cardiovascular disease**

The Quantitative Imaging Workshop is a multi-disciplinary forum where experts explore how to advance the integration of quantitative imaging for the detection and management of early lung cancer.

Two major developments were presented at the Workshop that have the potential to greatly improve CT image quality for lung cancer screening:

- 1) A new low-cost phantom (reference object) has been developed and is being disseminated internationally, which greatly simplifies the verification of CT image quality for quantitative measurement of solid lung nodules. There is also new automated cloud-based software to help quickly obtain information on image quality. This combined low-cost phantom and automated phantom analysis will make lung cancer imaging more accurate.
- 2) The second CT Lung Cancer Screening Protocol Challenge is requesting clinical sites to verify and optimize their CT lung cancer screening image quality performance every three months for a period of one year. This will lead to improved recommendations for lung imaging, including screening for lung cancer, COPD and coronary artery disease.

Dr. James Mulshine and Ms. Carolyn Aldigé present the James L. Mulshine, M.D., National Leadership Award to Sue Walsh Ferro. Ms. Ferro accepted the award on behalf of the late John W. Walsh, founder of the COPD Foundation.





Pictured left to right: Erica Harding, MA, Rear Admiral Retired Boris D. Lushniak, M.D., MPH and Edith Mitchell, M.D.

## Dialogue for Action® on cancer screening and prevention

Nothing represents the Prevent Cancer Foundation's convening power quite like the annual Dialogue for Action® conference.

The 20th annual Dialogue engaged a diverse and committed audience, representing 41 states, 12 American Indian/Alaska Native tribes and organizations, the District of Columbia, Puerto Rico, Guam and Saipan. The conference was held April 11-13, 2018, in McLean, Virginia.

### Opening Keynote: How to Democratize Medical Knowledge and Bring Best Practice Care to One Billion People by 2025

Erica Harding, MA, presented the audience with two big problems in cancer and beyond. First: billions of people lack access to high quality health care at the right place and the right time. Second: although medical knowledge is growing exponentially, it is not being widely shared—and thus is not being put into practice around the

globe. Harding explained how the Project ECHO® (Extension for Community Health Outcomes) model can change that situation by revolutionizing medical education and increasing workforce capacity to reduce health disparities.

### Closing Keynote: Visions for the Future of Cancer Prevention

This year's closing keynote featured a panel of visionaries: Rear Admiral Retired Boris D. Lushniak, M.D., MPH; Edith P. Mitchell, M.D., FACP, FCPP; and Elaine Schattner, M.D., MA. The panel was moderated by Susan Dentzer, president and CEO of The Network for Excellence in Health Innovation. Each emphasized the need for communities to work together to tackle cancer prevention. "What will be the ten great public health achievements of the 21st century?" Dr. Lushniak asked. He and all the panelists emphasized a need for people to work together to tackle cancer prevention as a community endeavor.



## 2018 HPV Legislative Report Card

This report card is a snapshot of each state's efforts to enact or introduce HPV vaccine legislation to improve education and awareness, or provide access to the HPV vaccine. Please see the criteria below outlining the **most recent action** taken by states to address HPV education, awareness and vaccinations:

<b>A</b>	States receiving an A have enacted legislation to require the HPV vaccine for public school entry for <u>both ages</u> , <u>Alabama</u> .	<b>Rhode Island**</b>
<b>B</b>	States receiving a B have enacted legislation to require the HPV vaccine for public school entry <u>for ages 11-12</u> .	<b>District of Columbia</b> <b>Virginia</b>
<b>C</b>	States receiving a C do not have an HPV vaccine requirement for public school entry, but they have <u>passed</u> HPV vaccine legislation to improve education and awareness, or access to the HPV vaccine.	<b>Colorado</b> <b>Illinois</b> <b>Indiana</b> <b>Iowa</b> <b>Louisiana</b> <b>Maine</b> <b>Maryland</b> <b>Michigan</b> <b>Minnesota</b> <b>Missouri</b> <b>Nebraska</b> <b>Nevada</b> <b>New Jersey</b> <b>New Mexico</b> <b>New York</b> <b>North Carolina</b> <b>North Dakota</b> <b>Oregon</b> <b>Pennsylvania</b> <b>South Dakota</b> <b>Tennessee</b> <b>Texas***</b> <b>Utah</b> <b>Washington</b>
<b>D</b>	States receiving a D do not have an HPV vaccine requirement for public school entry, but they have <u>passed</u> HPV vaccine legislation (either currently or in a previous session) to improve education and awareness, or access to the HPV vaccine.	<b>Alabama</b> <b>Arizona</b> <b>Arkansas</b> <b>California</b> <b>Connecticut</b> <b>Florida</b> <b>Georgia</b> <b>Hawaii</b> <b>Kansas</b> <b>Kentucky</b> <b>Massachusetts</b> <b>Mississippi</b> <b>Ohio</b> <b>Oklahoma</b> <b>South Carolina</b> <b>Vermont</b> <b>West Virginia</b> <b>Wisconsin</b>
<b>F</b>	States receiving an F have <u>never enacted or introduced</u> any HPV vaccine legislation to improve education and awareness, or access to the HPV vaccine.	<b>Alaska</b> <b>Delaware</b> <b>Idaho</b> <b>Montana</b> <b>New Hampshire</b> <b>Wyoming</b>

\*As of 2011, the CDC recommends the HPV vaccine for boys ages 11-12. It has been recommended for girls ages 11-12 since 2006. In addition to causing most cervical, vaginal and vulvar cancers in women, HPV is associated with some cancers in men (i.e., anal, oropharyngeal and penile cancers).

\*\*Rhode Island's vaccination requirement was put in place by the Department of Health, which does not require legislative approval.

\*\*\*In 2007, Texas governor Rick Perry passed an executive order to require HPV vaccinations for public school entry for girls only, but it was later repealed by the Texas House of Representatives (H.R. 1000).

THINK ABOUT THE LINK

The Prevent Cancer Foundation® released the 2018 HPV Legislative Report Card on Capitol Hill, providing a snapshot of each state's efforts to enact or introduce HPV vaccine legislation to improve education and awareness, or provide access to the HPV vaccine.

The Foundation's advocacy and policy efforts seek to raise elected officials' and policymakers' awareness of the importance of cancer prevention. Our goal is to increase access to preventive services and quality health care, reduce barriers to individual health and wellness and ensure adequate funding for cancer prevention and early detection research and programs.

## Cervical cancer co-testing

Each year more than 12,000 women in the U.S. are diagnosed with cervical cancer. Research shows that routine cervical cancer testing with both a Pap test and HPV test (co-testing) identifies more cases of cancer than either the HPV or Pap test alone. What's more, co-testing identifies cancer in earlier stages, when successful treatment is more likely. That's why the Foundation was alarmed when the U.S. Preventive Services Task Force (USPSTF) released new draft recommendations for cervical cancer screening in 2017 that did not include co-testing, putting access to comprehensive cervical cancer screening at risk for millions of women.

**So we fought back.** Founder and CEO Carolyn Aldigé took to the media with an op-ed in *U.S. News & World Report* outlining the gravity of the issue. The Foundation, in conjunction with our *Think About the Link*® campaign, held a briefing on Capitol Hill featuring two-time cervical cancer survivor Kara Million, who shared her personal story to show the importance of screening and early detection. We also brought Kara to meet with several members of the House of Representatives.

Soon after, members of Congress from both sides of the aisle took action. **Reps. Rosa DeLauro** (Conn.) and **Martha Roby** (Ala.) helped raise awareness among their congressional colleagues, and **Reps. David Young** (Iowa) and **Terri Sewell** (Ala.) led the effort to formally raise the issue with HHS Secretary Alex Azar. Rep. Young pressed the importance and urgency of this issue, with the support of Rep. DeLauro, and added language to an appropriations bill requiring co-testing recommendations stay in place until 2022.

What's more—the USPSTF heard our call and changed their recommendations. The final recommendations released in late summer 2018 retained co-testing for women ages 30-65. This change will save lives!

**Here are some other issues we focused on this year:**

### **HPV vaccination rates**

The human papillomavirus (HPV) can cause least six types of cancer. HPV vaccination, which has been reduced from three doses to two, is recommended for all girls and boys ages 11-12, but vaccination rates in the U.S. are shockingly low.

The advocacy team released an “HPV Legislative Report Card,” a snapshot of each state’s efforts to enact or introduce HPV vaccine legislation to improve education and awareness, or provide access to the HPV vaccine. Only Rhode Island received an A grade, and only Virginia and the District of Columbia earned Bs. This piece is a wake-up call to elected officials to prioritize cancer prevention policies.

### **Prevention and Public Health Fund**

The advocacy program continues to support the Prevention and Public Health Fund, which is routinely targeted to reallocate resources to other federal initiatives. This fund provides community grants across the country that support smoking cessation programs, health education for underserved communities, immunization programs, cancer screenings and more. The Prevention and Public Health Fund saves lives, and we will continue to fight to protect it.

### **The Advocacy Workshop: Health care disparities and their impact on prevention**

The Foundation held its annual Advocacy Workshop in April, focusing on health care disparities across disease states. Advocates representing cancer, diabetes, heart disease, arthritis and more came together to talk about common risk factors and preventive measures for chronic conditions and diseases. Dialogue centered on the growing need for more robust screening measures and approaches to help reduce risk in vulnerable populations. We plan to continue these conversations and seek partnerships to elevate the role of prevention in public health and policy.



Deanna Darlington, Director of Patient Advocacy and Allied Development at Amgen, discusses health disparities in chronic disease prevention at the annual Advocacy Workshop.



# OUTREACH

## Community Grants

Through its community grants program, the Prevent Cancer Foundation® is proud to support 12 projects focused on increasing cancer prevention and early detection in communities across the U.S. The projects were selected through a competitive grants process, and each program received a one-year, \$25,000 grant.

The projects focus on a variety of education and screening goals for breast, liver, lung, colorectal and cervical cancers, as well as HPV vaccination and hepatitis testing to prevent cancers linked to these viruses. The grants will have a direct impact on underserved populations.

Since 2007, the Foundation has awarded more than \$1.6 million in community grants, in 33 states, as well as several tribes and territories.

## Community Grants Locations

St. Vincent Foundation  
Los Angeles, CA

Hepatitis B Foundation  
Doylestown, PA

Asian Health Coalition  
Chicago, IL

Iowa Harm Reduction Coalition  
Iowa City, IA

Hitting Cancer Below the Belt  
Midlothian, VA

University of Southern California  
Los Angeles, CA

The Regents of the University of  
New Mexico, Albuquerque, NM

Spectrum Health Foundation  
Grand Rapids, MI

Planned Parenthood of Wisconsin, Inc.  
Milwaukee, WI

OhioHealth Foundation  
Columbus, OH

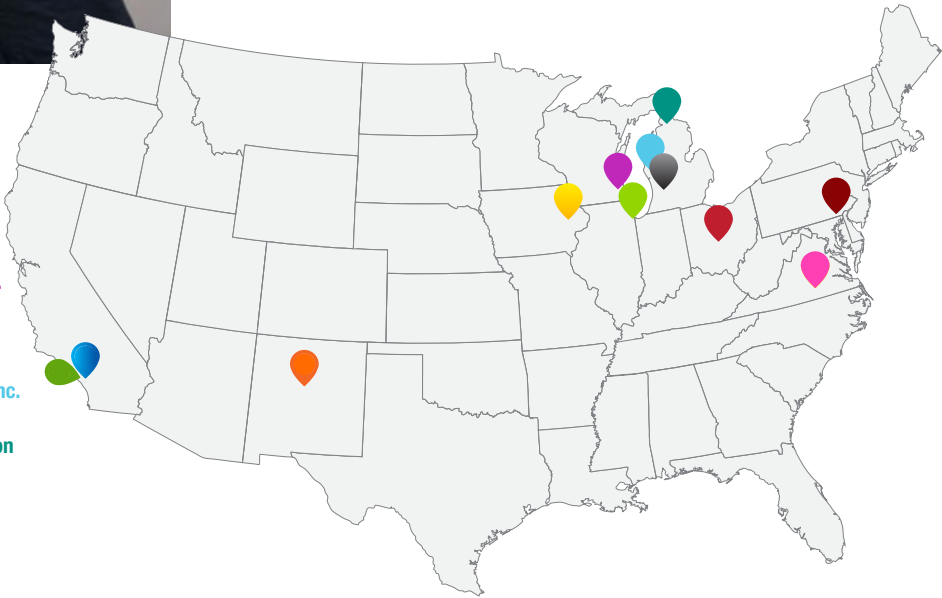
Northwest Michigan Health Services Inc.  
Shelby, MI

McLaren Northern Michigan Foundation  
Petoskey, MI



The University of New Mexico in Albuquerque will expand their Breast Health Pláticas project to offer breast health education classes to at least 300 Hispanic women/Latinas in three additional counties. Working with 38 community partners, the project aims to provide education and navigation services to reduce barriers to screening and conduct follow-up with participants. The project’s goal is to increase breast cancer knowledge by 80 percent among participants.

University of Southern California – Keck School of Medicine in Los Angeles aims to provide lung cancer education and screening and smoking cessation services to the surrounding Korean-American community. Working with community partners, the project will provide tailored education to 300 people and lung cancer screening at no cost to 100 high-risk individuals. Participants will receive comprehensive navigation services for any necessary follow-up care and treatment.







## ***¡Celebremos la Vida!*** **(Let's Celebrate Life!)**

*¡Celebremos la Vida!* is a breast and cervical cancer education and early detection program for medically underserved women in the Hispanic community in the District of Columbia and McHenry County, Illinois. *¡Celebremos la Vida!* provides participants with free, comprehensive health education and screenings in a setting that is culturally appropriate and nurturing.

Since its inception, the *Celebremos* program has provided over 15,800 screening and diagnostic mammograms and more than 10,300 Pap tests. More than 15,600 *Celebremos* participants and accompanying friends and family members have received health education.

To date, 54 women have been diagnosed with cancer, and all have received treatment. Your support has made this possible—thank you.



## Breast Health Education

*The Breast Health Education for Young Women Facilitator's Guide* was developed to increase young women's knowledge about breast health and encourage information sharing with female relatives who are age appropriate for screening.

"They all could relate," said Toni Stevenson, President of Womanhood Training, who recently used the Guide with a group of girls ages 12-17. "Something came to life for them, and you saw the lightbulb come on."

The *Guide* is available for free download in English and Spanish, and so far it has been downloaded in 49 states, the District of Columbia, five U.S. territories and 37 countries.

To download your free copy or see more about Womanhood Training's experience using the *Guide*, visit [www.preventcancer.org/breasthealthguide](http://www.preventcancer.org/breasthealthguide).

Girls from Womanhood Training, an African-centered rites of passage program for young girls, recently did a session on breast health. Here the girls represent the one in eight women who will be diagnosed with breast cancer. "You don't think that things could happen to you, but the fact that it could...like, one of eight, that was just crazy to me," said one of the participants.





## Super Colon®

The Prevent Cancer Super Colon® is an interactive educational tool that travels to communities across America with the message that colorectal cancer is: **Preventable. Treatable. Beatable!®**

Visitors walk through the giant, inflatable colon to get an up-close and personal look at:

- Healthy colon tissue
- Tissue with non-malignant colorectal disease, such as Crohn's and colitis
- Colorectal polyps
- Various stages of colorectal cancer



# SIGNATURE EVENTS



## Annual Spring Gala

The Prevent Cancer Foundation® held its 24th annual spring gala, “Sensations of Singapore,” under the honorary patronage of Singapore Ambassador, His Excellency Ashok Mirpuri, and Mrs. Gouri Mirpuri. The event raised a record \$1.7 million to support the Foundation’s mission and programs.

Singer-songwriter Alejandro Escovedo shared his story during the “Lighting The Way to Prevention” pledge drive. Escovedo was diagnosed with hepatitis C in 1996. At the time, he did not know that hepatitis C is a leading cause of liver cancer. Fortunately, he was tested and treated for the virus before he developed cancer, and is now hep-C cured.

“I was told there was a strong chance that I wouldn’t be here to tell my story, sing my songs and hold my children and loved ones,” Escovedo said. “I am a lucky and grateful man.”

The Prevent Cancer Foundation® Annual Spring Gala is consistently recognized as one of Washington’s top 100 Events by BizBash (ranked #4 in the benefits category in 2017). Gala décor was inspired by the Republic of Singapore and personally designed by TV personality and weddings and celebrations expert David Tutera, who is a member of the Foundation’s board.

The Foundation honored Senators Roy Blunt and Patty Murray with the 2018 Cancer Champion awards for their leadership in increasing funding for the National Institutes of Health (NIH).



This page, counter clockwise from the top:

His Excellency, the Ambassador of Singapore, Ashok Mirpuri, and Mrs. Gouri Mirpuri with Carolyn “Bo” Aldigé

Board Members William Magner and Lynne O’Brien and their guests

Gala Co-Chairs Rai Downs and Angela Riemer with Cancer Champion Sen. Roy Blunt





## SIGNATURE EVENTS

### Congressional Families Cancer Prevention Program® – Action for Cancer Awareness Luncheon

A bipartisan, bicameral group of cancer prevention supporters gathered to celebrate the silver anniversary of the Congressional Families Cancer Prevention Program's *Action for Cancer Awareness Awards Luncheon*. The unique event annually recognizes congressional spouses, distinguished journalists and leading advocates for using their respective platforms to help educate the public on cancer prevention.

The theme of “Catch the Wave of Prevention” illustrates the momentum that can result from the sharing of knowledge, inspiration and action on cancer prevention and wellness. This year's honorees exemplify the positive impact of this force: **Sarah Hospodor-Pallone** (spouse of Rep. Frank Pallone, D-NJ), **Marie Royce** (spouse of Rep. Edward Royce, R-CA), **Laurie McGinley**, health/medical reporter for *The Washington Post*, and **Sun Bum®**.

Twenty members of Congress and more than 40 congressional and diplomatic spouses attended, as well as several ambassadors. The Congressional Families Cancer Prevention Program® works throughout the year to host seminars, webinars and events that encourage dialogue and equip members and spouses with the tools to bring the message of cancer prevention and early detection back to their communities and constituents.



Top:  
Lisa McGovern, Tom Rinks of  
Sun Bum, Carolyn “Bo” Aldigé,  
Paula Zahn.

Bottom:  
Sarah Hospodor-Pallone,  
Laurie McGinley, Marie Royce.





**\$2.4 million**  
raised in 2018

## Awesome Games Done Quick

The 2018 Awesome Games Done Quick (AGDQ) video gaming marathon broke fundraising and attendance records, raising a whopping \$2.4 million with more than 1,800 gamers from around the world attending in person and millions of viewers streaming live via Twitch. Funds raised from the annual marathon are supporting important research globally, funding community programs to provide education and screenings to the poorest populations, and providing fellowships to physicians, clinicians and researchers that allow them to receive hands-on training at some of the top cancer centers and medical institutions in the world.



## SIGNATURE EVENTS

### Prevent Cancer Health Fair and 5k Walk/Run

Where can you go to see behind the scenes at a Major League ballpark, get a cancer screening, watch a former president ride a bicycle and help support cancer prevention research and education, all before 11 a.m.? The annual Prevent Cancer Health Fair and 5k Walk/Run!

Families, friends and colleagues came together at Nationals Park in Washington, D.C. to raise a record-breaking \$287,000 for cancer prevention and early detection. That means we can fund more research grants, screening programs and educational efforts to help millions *Stop Cancer Before It Starts!*® Together, we can reduce the number of people who are diagnosed with cancer each year.

The highlight of the day was the Health Fair, where participants could get oral cancer screenings, flu shots, healthy snacks, health information and more. More than 30 companies participated in the Health Fair this year.

**More than  
\$287,000  
raised in 2017**







### Julie and Bill Howard

“Sarah Howard was full of joy, with a sweet disposition and abundant capacity for happiness. When she died of cancer at age 11, we decided to honor her memory by supporting childhood cancer research. To date we have raised and awarded more than \$600,000 in grants in this underfunded area. We have been proud to partner with the Prevent Cancer Foundation to ensure that only the highest-quality peer-reviewed grants receive support from the Sarah Howard Fund.”

## DONOR SPOTLIGHTS

---



### Mia and Martin Johnson

“I have been an admirer of the Prevent Cancer Foundation for many years, so I was thrilled when I was asked to be on the board. I have tried my best to participate in all facets of board work – attending meetings, serving on committees, raising funds, making personal donations and generating ideas for new partnerships and events.”



### Leslie Cameron Devereaux

“Carolyn Aldigé and I have so much in common (our birthday, being named for our fathers, our love of reading and wildlife conservation) but the most important thing we share is a devotion to the Prevent Cancer Foundation and its mission of saving lives across all populations through cancer prevention and early detection. I am proud to have supported the Foundation for more than 25 years and to have given many young scientists the boost they needed to establish their careers.”



### The Hill Family

“An important aspect of cancer awareness that I think people forget about is prevention. We’ve chosen Prevent Cancer Foundation as a beneficiary of No-Shave November to help get the word out about cancer before a diagnosis. It’s not a bad thing to talk about cancer—especially if you are talking about all the ways you can make healthier choices and prevent it.”



## WAYS TO GIVE

The Prevent Cancer Foundation® relies on donations from supporters like you. Thanks to these donations, we have invested in groundbreaking cancer research in support of our mission and innovative cancer prevention and early detection programs and education. We value your partnership and hope you will continue to support our vision to *Stop Cancer Before It Starts!*®

Here are some ways you can support the Prevent Cancer Foundation® today:



### Give monthly

Recurring gifts provide the Foundation with consistent, reliable funds and are easier on your wallet.



### Make a direct donation

Every dollar you give supports our mission and saves lives.



### Celebrate a loved one

Donate in honor or memory of a loved one and make a difference in the lives of others.



### Plan a gift

Support cancer prevention and early detection now and in the years to come.



### Give at work

A simple way to give is through a payroll deduction. Our combined federal campaign CFC number is 11074.



*Stop Cancer Before It Starts!*®

## Thank You!

The ASCO Post

ABOUT • NEWS • MEETINGS • TOPICS • VIDEOS

### Managing Low-Dose CT Screening for Lung Cancer

Workshop explores implementation, quality assurance, and integration of COPD and cardiovascular disease findings.

By Caroline Mihal  
December 10, 2017

On November 10, 2017, the annual Quantitative Imaging workshop, convened by the Prevent Cancer Foundation, provided a forum to exchange ideas on quantitative CT imaging for early disease management, as well as on policy and advocacy for lung cancer, COPD, and cardiovascular screening. "There are many different edges—different perspectives and challenges," said Carolyn McGill, President and Founder of the Foundation. "We're talking about a world that doesn't exist yet, utilities that are just nascent. It is incredibly challenging."

Screening is a demanding, complex management process," said James L. Whitlatch, MD, of Rush University Medical Center, opening the Link Quantitative Imaging Workshop in Washington, DC. This year's workshop explored successful strategies to streamline the management process and overcome obstacles, encouraging integration of low-dose CT screening by the larger medical community, creating an infrastructure designed to ensure the quality of images obtained from various screening instruments, and effectively managing tobacco-related findings on low-dose CT scans, including early signs of chronic obstructive pulmonary disease (COPD) and cardiovascular disease.

The annual Quantitative Imaging workshop, convened by the Prevent Cancer Foundation, provides a forum to exchange ideas on quantitative CT imaging for early disease management, as well as on policy and advocacy for lung cancer, COPD, and cardiovascular screening. "There are many different edges—different perspectives and challenges," said Carolyn McGill, President and Founder of the Foundation. "We're talking about a world that doesn't exist yet, utilities that are just nascent. It is incredibly challenging."

Screening is a demanding, complex management process," said James L. Whitlatch, MD, of Rush University Medical Center, opening the Link Quantitative Imaging Workshop in Washington, DC. This year's workshop explored successful strategies to streamline the management process and overcome obstacles, encouraging integration of low-dose CT screening by the larger medical community, creating an infrastructure designed to ensure the quality of images obtained from various screening instruments, and effectively managing tobacco-related findings on low-dose CT scans, including early signs of chronic obstructive pulmonary disease (COPD) and cardiovascular disease.

The annual Quantitative Imaging workshop, convened by the Prevent Cancer Foundation, provides a forum to exchange ideas on quantitative CT imaging for early disease management, as well as on policy and advocacy for lung cancer, COPD, and cardiovascular screening. "There are many different edges—different perspectives and challenges," said Carolyn McGill, President and Founder of the Foundation. "We're talking about a world that doesn't exist yet, utilities that are just nascent. It is incredibly challenging."

Screening is a demanding, complex management process," said James L. Whitlatch, MD, of Rush University Medical Center, opening the Link Quantitative Imaging Workshop in Washington, DC. This year's workshop explored successful strategies to streamline the management process and overcome obstacles, encouraging integration of low-dose CT screening by the larger medical community, creating an infrastructure designed to ensure the quality of images obtained from various screening instruments, and effectively managing tobacco-related findings on low-dose CT scans, including early signs of chronic obstructive pulmonary disease (COPD) and cardiovascular disease.

18. Prevent Cancer Foundation's Spring Gala

David Tutera designed a modern Italian ambience for the Prevent Cancer Foundation's Spring Gala in March with tables of white and silver topped with cloud-shaped arrangements of babies breath. The event took place at the National Building Museum in Washington.

prevent cancer

THINK ABOUT THE LINK

Marlene Janet Winslow wants you to Think About the Link!

523 views

Prevent Cancer Foundation  
Presented on Sep 10, 2017

Tony Award-winning Broadway star and Think About the Link! spokesperson, Marlene Janet Winslow, was diagnosed with cervical cancer at the young age of 31. Now cancer-free, Winslow is committed to spreading the word about the link between the human papillomavirus (HPV) and cancer.

Reader's Digest

HEALTH • FOOD • SERVICE • CULTURE • TRAVEL STORIES • JONES • CONTENTS

### 15 Things Cancer Doctors Do to Avoid Cancer

Charlotte Hilson Anderson

These experts definitely practice what they preach. Here's how you can make these simple changes to prevent cancer too.

"I get regular check-ups too"

THINK ABOUT THE LINK

THINK ABOUT THE LINK

Best Health Education for Young Women

©2018-2019

The San Diego Union-Tribune

START YOUR OWN NEWS

LOG IN

Column | Nothing staged about Tony-winning 'Hairspray' actress's cancer crusade

News / News Columns / Share Bell

THINK ABOUT THE LINK

Actress Marlene Janet Winslow was an Oscar for her Broadway performance as the vibrant Tracy Turnblad in "Hairspray" in 2005. At the time she was secretly battling cervical cancer. (Photo by Morgan Mayne)

US NEWS CIVIC

Co-Test for Cervical Cancer

Reject new guidelines that delay comprehensive women's health screenings.

By Gordon K. Akmal, Senior Contributor  
Nov 6, 2017 at 11:45 AM

Stop cancer before it starts. 30 (PHOTO BY JOE MAGALIA/GETTY IMAGES)

SCREENING FOR CERVICAL cancer is one of health care's greatest success stories. Once one of the most common causes of cancer death for American women, mortality rates in the U.S. have been cut by more than half in the last four decades.

Each year, more than 12,000 women are diagnosed with invasive cervical cancer because of the Pap test (also called Pap smear), or Pap test combined with the test for the human papillomavirus, or HPV. Current medical guidelines recommend that women 30 to 65 years be co-tested with both every five years. This combination has proven critical to identifying cervical cancer and saving lives.

But in September, the U.S. Preventive Services Task Force, a group convened by the U.S. Agency for Healthcare Research & Quality, issued new proposed guidelines for cervical cancer screening. Under these guidelines, women between the ages of 21 and 65 would be screened by Pap alone every three years, and women between 30 and 65 would be screened by Pap tests every three years or receive testing for high-risk HPV every five years. Co-testing is not included in the recommendations.

David Tutera @DavidTutera · 28 Nov 2017

I have been involved with PCF for nearly 20 years today is #GivingTuesday! After #BlackFriday & #CyberMonday, it feels good to give back. Join me & donate to @preventcancer, the only U.S. nonprofit dedicated solely to cancer prevention & early detection. [preventcancer.org/donate](http://preventcancer.org/donate)

1 6 34

Twitter

DALLAS NEWS

Life • Cooking • Home • Gardening • Travel • Better Living • Texana • Style

### 'I dodged the bullet by a hair,' Texas rocker Alejandro Escovedo says of his hepatitis C ordeal

Don't miss a story. Like us on Facebook. Like Us

Since collapsing onstage in 2005 in the throes of hepatitis C, Alejandro Escovedo has spent almost as much time talking about his health during interviews as he's spent talking about music.

But these days, his voice is upbeat and even joyful. Finally cured of the potentially deadly viral infection, the acclaimed Texas rocker, 67, is touring on behalf of the Prevent Cancer Foundation and its mission of making people aware of the connection between viruses and cancer.

"I dodged the bullet by a hair," he says. "When you go through something like that -- and when you watch so many of your friends die from cancer -- Last year, Escovedo was named a national spokesman for "Think About the Link," the Foundation's prevention and education campaign that focuses on three viruses linked to cancer: hepatitis B, hepatitis C and human papillomavirus (HPV).

He's filmed a public-service announcement, and last month he launched a 12-city "Think About the Link" concert tour that brings him to the Kessler Theater on Feb. 8.

Alejandro Escovedo

THINK ABOUT THE LINK



## MEDICAL ADVISORY BOARD

### CHAIRMAN

**David S. Alberts, M.D.**

Director Emeritus, University of Arizona Cancer Center  
Regents Professor of Medicine, Pharmacology, Nutritional Sciences, Public Health and BIO5

**Jasjit S. Ahluwalia, M.D., MPH, MS**

Professor, Brown University School of Public Health

**Bart Barlogie, M.D., Ph.D.**

Professor of Medicine, Hematology and Medical Oncology  
Icahn School of Medicine, Mount Sinai

**Monica M. Bertagnolli, M.D.**

President, American Society of Clinical Oncology; Chief, Division of Surgical Oncology at Dana-Farber and Brigham and Women's Cancer Center; Professor of Surgery, Harvard Medical School; Associate Surgeon, Brigham and Women's Hospital and Dana-Farber Cancer Institute

**Rachel F. Brem, M.D.**

Director, Breast Imaging and Interventional Center; Professor of Radiology; George Washington University Medical Center

**Paul A. Bunn Jr., M.D.**

Professor, James Dudley Chair in Cancer Research; University of Colorado Denver School of Medicine

**Philip Castle, Ph.D., M.P.H.**

Professor, Albert Einstein College of Medicine and Global Coalition Against Cervical Cancer

**Sigrid Carlsson, M.D., Ph.D., M.P.H.**

Assistant Attending Epidemiologist  
Memorial Sloan Kettering Cancer Center

**Kenneth H. Cowan, M.D., Ph.D.**

Director, Fred and Pamela Buffett Cancer Center; University of Nebraska Medical Center

**Riccardo Dalla-Favera, M.D.**

Director, Institute for Cancer Genetics  
Irving Cancer Research Center  
Columbia University Medical Center

**William S. Dalton, Ph.D., M.D.**

Founding Director, Personalized Medicine Institute; H. Lee Moffitt Cancer Center & Research Institute

**Andrew Dannenberg, M.D.**

Henry R. Erk, MD – Roberts Family Professor of Medicine  
Weill Medical College of Cornell University

**Raymond N. DuBois, M.D. Ph.D.**

Dean, College of Medicine  
Medical University of South Carolina

**H. Shelton Earp III, M.D.**

Director Emeritus; Lineberger Comprehensive Cancer Center  
University of North Carolina

**Stephen B. Edge, M.D.**

Vice President, Healthcare Outcomes and Policy; Roswell Park Cancer Institute

**Margaret Foti, Ph.D., M.D., (h.c.)**

Chief Executive Officer, American Association for Cancer Research (AACR)

**Harold P. Freeman, M.D.**

Chairman Emeritus and Founder  
Ralph Lauren Center for Cancer Care and Prevention

**Patricia A Ganz, M.D.**

Professor, UCLA Schools of Medicine and Public Health; Director, Division of Cancer Prevention & Control Research; Jonsson Comprehensive Cancer Center  
University of California, Los Angeles

**David M. Gershenson, M.D.**

Professor and Chair, Department of Gynecologic Oncology  
The University of Texas MD Anderson Cancer Center

**Edward Giovannucci, M.D., Sc.D.**

Associate Professor of Nutrition and Epidemiology  
Harvard School of Public Health

**Anna R. Giuliano, Ph.D.**

Professor and Director of Cancer Prevention  
H. Lee Moffitt Cancer Center and Research Institute

**Gary E. Goodman, M.D., M.S.**

Staff Oncologist/Joint Member  
Swedish Cancer Institute  
Fred Hutchinson Cancer Research Center

**Garth Graham, M.D., M.P.H.**

President, Aetna Foundation

**Stanley R. Hamilton, M.D.**

Professor and Head, Division of Pathology and Laboratory Medicine  
The University of Texas MD Anderson Cancer Center

**Claudia Henschke, M.D., Ph.D., FCCP**

Clinical Professor of Radiology  
The Mount Sinai Hospital, Department of Radiology, Mount Sinai School of Medicine

**Waun Ki Hong, M.D.**

Professor, Department of Thoracic Head and Neck Medical Oncology  
The University of Texas MD Anderson Cancer Center

**Elmer E. Huerta, M.D., M.P.H.**

Director, Cancer Preventorium  
Washington Cancer Institute, Washington Hospital Center

**Derek M. Huffman, Ph.D.**

Assistant Professor of Medicine and Molecular Pharmacology; Co-Director, Healthy Aging Physiology Core  
Institute for Aging Research  
Albert Einstein College of Medicine

**Lovell Allan Jones, Ph.D.**

Research Faculty  
College of Science & Engineering  
Texas A&M University Corpus Christi

**Karen E. Kim, M.D., M.S.**

Office of Community Engagement and Cancer Disparities  
University of Chicago

**T. Peter Kingham, M.D., FACS**

Associate Attending Surgeon, Hepatopancreatobiliary Service  
Department of Surgery  
Director, Global Cancer Disparity Initiatives  
Memorial Sloan Kettering Cancer Center

**Ann G. Kulze, M.D.**

Dr. Ann & Just Wellness, LLC

**Charles Landen, Jr., M.D., M.S.**

Associate Professor, University of Virginia Health System  
University of Virginia

**LaSalle D. Leffall, Jr., M.D., FACS**

Charles R Drew Professor of Surgery  
Howard University Hospital College of Medicine

**Bernard Levin, M.D.**

Professor (Emeritus)  
The University of Texas MD Anderson Cancer Center

**Marc E. Lippman, M.D.**

Professor of Oncology and Medicine  
Georgetown Lombardi Comprehensive Cancer Center

**Scott M. Lippman, M.D.**

Director, Moores Cancer Center  
University of California, San Diego

**Patrick J. Loehrer, Sr., M.D.**

Director, Melvin and Bren Simon Cancer Center, Indiana University

**John L. Marshall, M.D.**

Professor of Medicine  
Chief, Division of Hematology and Oncology, MedStar Georgetown University Hospital; Professor of Medicine and Oncology, Lombardi Comprehensive Cancer Center

**Elena Martinez, M.P.H., Ph.D.**

Professor of Family and Preventive Medicine, Moores Cancer Center  
University of California, San Diego



## SCIENTIFIC REVIEW PANEL

### Harold L. Moses, M.D.

Director Emeritus, Vanderbilt-Ingram Comprehensive Cancer Center

### Larry Norton, M.D.

Deputy Physician-in-Chief, Breast Cancer Programs, Memorial Sloan Kettering Cancer Center

### Gilbert S. Omenn, M.D., Ph.D.

Professor of Internal Medicine, Human Genetics and School of Public Health University of Michigan

### Darrell S. Rigel, M.D.

Clinical Professor of Dermatology New York Medical Center

### John C. Ruckdeschel, M.D.

Director, University of Mississippi Cancer Institute

### Kathleen Schmeler, M.D.

Associate Professor, Department of Gynecologic Oncology and Reproductive Medicine; Director, M.D. Anderson Cancer Center and Lyndon B. Johnson Hospital Colposcopy Clinics

### David Schottenfeld, M.D., M.Sc.

John G. Searle Professor Emeritus of Epidemiology and Internal Medicine University of Michigan School of Public Health Department of Epidemiology

### Karen Sfanos, M.S., Ph.D.

Associate Professor of Pathology Johns Hopkins Medicine

### Erich Sturgis, M.D., M.P.H.

Professor, M.D. Anderson Cancer Center and University of Texas

### Paul Talalay, M.D.

John Jacob Abel Distinguished Service Professor; Professor, Department of Pharmacology and Molecular Sciences Johns Hopkins University School of Medicine

### Thomas K. Weber, M.D., FACS

Director of Surgical Oncology Services Northern Westchester Hospital

### George J. Weiner, M.D.

Director, Holden Comprehensive Cancer Center, University of Iowa

### Richard C. Wender, M.D.

Chief Cancer Control Officer American Cancer Society

### Petra Wilder-Smith, D.D.S., Ph.D.

Director of Dental Programs Beckman Laser Institute and Medical Clinic, University of California Irvine

### Walter C. Willett, M.D., Dr.P.H.

Frederick John Stare Professor of Epidemiology and Nutrition Chairman, Department of Nutrition Harvard University

### Stephen C. Yang, M.D.

Chief, Division of Thoracic Surgery; Associate Professor, Surgery and Oncology The Johns Hopkins Medical Institution

### Robert C. Young, M.D.

President, RCY Medicine NCCN Foundation Board of Directors

### Bernard Levin, M.D. (Co-Chair)

Professor Emeritus, University of Texas, MD Anderson Cancer Center

### James L. Mulshine, M.D. (Co-Chair)

Vice-Chairman, Scientific Director, Prevent Cancer Foundation®, Professor Emeritus, Rush Medical College, Rush University

### Christopher Albanese, Ph.D.

Professor, Departments of Oncology and Pathology Director, Preclinical Imaging Research Laboratory (PIRL) Lombardi Comprehensive Cancer Center Georgetown University Medical Center

### Rebecca Ashare, Ph.D.

Assistant Professor, Center for Interdisciplinary Research on Nicotine Addiction, Perelman School of Medicine University of Pennsylvania

### Janet Audrain-McGovern, Ph.D.

Associate Professor, Department of Psychiatry Perelman School of Medicine, University of Pennsylvania

### David Berrigan, Ph.D., M.P.H.

Behavioral Research Program, Division of Cancer Control and Population Sciences, National Cancer Institute

### Robert Clarke, Ph.D., D.Sc.

Dean for Research, Professor of Oncology Lombardi Comprehensive Cancer Center Georgetown University Medical Center

### Nancy Emenaker, Ph.D., M.Ed., R.D.N., L.D., F.A.N.D.

Program Director, National Cancer Institute, Nutritional Science Research Group, Division of Cancer Prevention

### Leena Hilakivi-Clarke, Ph.D.

Professor, Oncology, Georgetown University

### Stephen D. Hursting, Ph.D., M.P.H.

Professor, Department of Nutrition and Nutrition Research Institute; Director, Division of Nutritional Biochemistry Member, Lineberger Comprehensive Cancer Center University of North Carolina at Chapel Hill

### Brian Lehmann, Ph.D.

Research Assistant Professor, Vanderbilt University, Vanderbilt-Ingram Cancer Center

### Mary Beth Martin, Ph.D.

Professor, Departments of Oncology, Biochemistry and Molecular Biology, Lombardi Comprehensive Cancer Center Georgetown University Medical Center

### Carola Neumann, M.D.

Associate Professor, Department of Pharmacology and Chemical Biology, UPMC Hillman Cancer Center, Magee-Women's Research Institute

### Pierre P. Massion, M.D.

Professor of Medicine, Vanderbilt University Medical Center

### Marc D. Schwartz, Ph.D.

Professor, Oncology, Associate Director for Population Science, Co-Director, Fisher Center for Hereditary Cancer and Clinical Genomics Research, Georgetown University

### Peter G. Shields, M.D.

Deputy Director, Comprehensive Care Center Professor, College of Medicine, Julius F. Stone Chairman in Cancer Research, James Cancer Hospital, The Ohio State University, Wexner Medical Center

### Kenneth D. Tew, Ph.D., D.Sc.

John C. West Chair in Cancer Research, Chairman, Department of Cell and Molecular Pharmacology and Experimental Therapeutics, Medical University of South Carolina

### Danyelle M. Townsend, Ph.D.

Assistant Professor, Department of Drug Discovery and Biomedical Sciences; Director, Analytical Redox Biochemistry, Medical University of South Carolina

### Bruce J. Trock, Ph.D.

Director, Division of Epidemiology, Brady Urological Institute Frank Hinman, Jr. Professor of Urology, Professor of Epidemiology and Oncology, Johns Hopkins University School of Medicine

### Kent E. Vrana, Ph.D.

Elliot S. Vesell Professor Chair, Department of Pharmacology Penn State College of Medicine

### Zhen Zhang, Ph.D.

Associate Professor, Department of Pathology and Oncology, Johns Hopkins Medical Institutions

## 2018 DONOR HONOR ROLL

### THE EDWARD PERRY RICHARDSON LEGACY SOCIETY

Edward Perry Richardson was the father of Carolyn R. Aldigé, founder and CEO of the Prevent Cancer Foundation®. His struggle against cancer inspired her to establish the organization and his memory has sustained the Foundation's mission of saving lives across all populations through cancer prevention and early detection. Members of the Edward Perry Richardson Legacy Society are special friends of the Prevent Cancer Foundation® who have committed to ensuring the legacy of the Foundation by naming it as a beneficiary in their will, charitable gift annuity, charitable trust, individual retirement account or life insurance policy, or have made a gift of real estate or tangible personal property.

#### LEGACY MEMBERS

Mr. Henry Acad\*  
Mr. and Mrs. James G. Aldigé III  
Mrs. Betty C. Alewine  
Mr. Dewey Vincent Allen\*  
Mrs. Florence Atkins\*  
Mr. Forrest R. Ayers\*  
Miss Helen U. Farmer\*  
Ms. Margaret Bartel\*  
Mrs. Lee Lupher Bartruff\*  
Ms. Reba Cora Bean\*  
Mr. John A. Beaty\*  
Mr. Anton J. Befort\*  
Ms. Alice Elizabeth Behnke\*  
Ms. Ellen Behrens  
Dr. Charles Bessey\*

Ms. Elizabeth M. Beylon\*  
Ms. Elizabeth R. Black\*  
Mr. Rex A. Bohling\*  
Mrs. Anne R. Bord\*  
Ms. Lucille Bowman\*  
Mrs. Rosa Braun\*  
Mrs. Lucille Brents\*  
Ms. Artie Mae Brooks\*  
Ms. Jenny Brown\*  
Dr. Victoria Nicolau Busulegas\*  
Ms. Ettorina M. Cardella\*  
Ms. Ida T. Cavoli\*  
Ms. Victoria Conchie\*  
Mrs. Isabel H. Cosgrove\*  
Mrs. Jennie R. Craib\*  
Ms. Martha F. Cromley\*  
Mr. Richard L. Davies\*  
Mr. Marvin M. Davis\*  
Mrs. Idella Church Dean\*  
Mrs. Katharine S. Delashmutter\*  
Ms. Eva Devecsery\*  
Miss Leslie C. Devereaux  
Ms. Irene Diefenbach\*  
Mrs. Sally Dollinger\*  
Mrs. Virginia S. Doolittle\*  
Mrs. Myrtle F. Draffen\*  
Mrs. Sylvia N. Ehrlich\*  
Mr. Charles N. Eischen\*  
Mr. Jerome L. Ellenberg\*  
Miss Grace M. Elliott\*  
Ms. A. Irene Emswiler\*  
Mr. Paul Escalante\*  
Miss Mollie R. Evin\*  
Mr. Edward Joseph Fabish\*  
Ms. Barbara Falltrick\*  
Ms. Anita M. Farmer\*  
Ms. Claire Fearnside\*  
Ms. Teresa Felton\*  
Mr. Robert I. Fendrich\*  
Ms. Estelle Filomio\*  
Mr. and Mrs. Peter J. FitzGerald, Sr.  
Mr. Howard E. Foltz\*  
Mr. Jay B. Foote, Jr.\*  
Mr. Marion Frank\*

Ms. Berta Mae Gallagher\*  
Ms. Helen M. Galvin\*  
Mr. Lewis T. Gardiner\*  
Mr. Harold N. Gilbert\*  
Mrs. Esther Glendinning\*  
Ms. Susan L. Goroll\*  
Ms. Patricia O. Greenwell\*  
Mr. James T. Grossmann  
Mrs. Helen Hall\*  
Mr. Samuel D. Hall, Jr.\*  
Ms. Elizabeth Handley\*  
Mr. and Mrs. Van Buren Hansford\*  
Ms. J. Harriet Hanson\*  
Ms. Myrtle Hara\*  
Ms. Sarah A. Hayat\*  
Ms. Goldie Herrmann\*  
Mrs. Ruth Hoare\*  
Ms. Maria M. Hoemann\*  
Mrs. Deborah Houlihan  
Mr. and Mrs. Charles S. Houser  
Mrs. Alexine Clement Jackson  
Ms. Stella Jacobs\*  
Ms. Elizabeth C. Jenne\*  
Ms. Elsie D. Johnson\*  
Mrs. Hazel Johnson\*  
Mr. Nahum Joslyn\*  
Mrs. Leslie A. Karr  
Mr. Joseph F. Kelly, Jr.  
Ms. Rosemary Kelly\*  
Mrs. Lenora M. Kerschner\*  
Ms. Virginia Kintz\*  
Lt. Col.\* and Mrs. William Konze  
Ms. Rose Koury\*  
Ms. Harriet R. Kutik\*  
Mr. Emil G. Kramer\*  
Mr. Herbert Kramer\*  
Mrs. Phyllis Kroeger\*  
Ms. Lorraine D. Lader\*  
Ms. Carla Laemmle\*  
Mr. Brock R. Landry  
Ms. Tirzah A. Lassahn\*  
Mrs. Floy Lehman\*  
Ms. Jennie C.C. Li\*  
Ms. Laurie D. Lima\*

Mr. and Mrs. Hal Litzius\*  
Mr. and Mrs. Gary Lytle  
Mr. Stanley L. Mackey\*  
Mr. Gordon L. Mann, Jr.\*  
Mr. Pasquale A. Maresco\*  
Mr. Benjamin Marks\*  
Ms. Blondie L. Marsh\*  
Ms. Anna Martinese\*  
Ms. Miriam H. Mason\*  
Mrs. Mary E. Mathis\*  
Ms. Barbara Mazur\*  
Mr. Norman S. McCallister\*  
Mrs. Virginia N. McConchie\*  
Mr. Robert Lee McGuire\*  
Mr. Robert F. McKinley\*  
Ms. Margaret F.L. McKnight\*  
Ms. Ezilda T. Michel\*  
Ms. Irene B. Miller\*  
Ms. Amy Mitchell\*  
Mr. and Mrs. Jon E. Mittelhauser  
Ms. Diane M. Montini\*  
Ms. Mary Helen Moorhead\*  
Mr. Donald Moy\*  
Ms. Marabelle Nape\*  
Ms. Claire Nemser\*  
Mr. and Mrs. Donald R. Neubrecht\*  
Mrs. Elizabeth H. Newberry\*  
Mr. Bernard Niewoehner\*  
Mr. Harvey L. Panzer\*  
Mrs. Anna Papa\*  
Ms. Rose Pasternak\*  
Mrs. Catherine Bond Patterson\*  
Ms. Lonetta C. Patterson\*  
Mr.\* and Mrs. Thomas Perez\*  
Mrs. Josephine Ann Perrella\*  
Ms. Patricia A. Peterson\*  
Ms. Sylvia Petters\*  
Mr. Richard J. Phillips\*  
Ms. Joann Piccolo and  
Mr. Timothy Carmody  
Mrs. Doreen L. Pietraszkiewicz\*  
Mr. John J. Pikulski\*  
Mrs. Myrtle Potter\*  
Mr. John Prigee\*  
Mrs. Nancy Gray Pyne

Mrs. Josephine Rich\*  
Ms. Joan L. Rochelle\*  
Mrs. Zelda B. Rockwell\*  
Ms. Arlene Rosen\*  
Mr. Richard T. Russell, Jr.\*  
Mrs. Ida I. Schaefer\*  
Dr. and Mrs. Daryl R. Schaller  
Mrs. Charlotte E. Schneider\*  
Ms. Marian A. Schwab\*  
Mr. Glenn E. Selix\*  
Mrs. Theresa R. Shapiro\*  
Ms. Eleanor Shelly\*  
Mr. Alfred J. Shaw\*  
Ms. Dorothy Singleton\*  
Mr. Elias Skaaren\*  
Mrs. Elizabeth Cornell Smith\*  
Ms. Elvera W. Smith\*  
Ms. Betty C. Stich\*  
Ms. Claire Strub\*  
Ms. Genevieve Suss\*  
Ms. Mildred Swartzbaugh\*  
Ms. Ruth Thayer\*  
Mr. Overton Arnold Thompson\*  
Mrs. Ione M. Uphoff\*  
Mr. Nicolaas Van Riesen\*  
Ms. Colleen Mae Veith\*  
Dr. Jan P. Vette\*  
Mr. Stanley Vomacka\*  
Ms. Margaret Vorous  
Ms. Rose Helen Walker\*  
Mrs. Margery L. Weil\*  
Mr. Richard Weiss\*  
Ms. Bertha Wempe\*  
Ms. Sarah H. West\*  
Mrs. Laura S. Williams  
Mrs. Margaret A. Wilson\*  
Ms. Kathy Winslowe\*  
Ms. Victoria Winters\*  
Mr. James B. Wittrock\*  
Mr. Murlyn V. Wolstenholm\*  
Ms. Edith M. Zimmerman\*  
Ms. Bernice Zuber\*

\* Deceased

### LIFETIME FRIENDS

Lifetime Friends (\$25,000 and above in lifetime giving)

#### INDIVIDUALS

##### \$1,000,000 and above

The Devereaux Foundation

##### \$500,000 to \$999,999

Mr. Frank C. Carlucci III and  
Mrs. Marcia Myers Carlucci  
Estate of Tirzah A. Lassahn  
Estate of Stanley L. Mackey  
Estate of Gordon L. Mann, Jr.  
Joan L. Rochelle Revocable Trust  
Dr. Paul G. Stern

##### \$100,000 to \$499,999

Dr. and Mrs. Ralph W. Alewine III  
Estate of Dewey V. Allen  
Estate of Florence Atkins  
Mrs. Cecile C. Bartman  
Estate of Lee Lupher Bartruff  
Bohling 1994 Trust  
Estate of Anne R. Bord  
James H. Clark Charitable  
Foundation  
Estate of Martha F. Cromley  
Estate of Richard L. Davies  
Estate of Marvin M. Davis  
Mr. and Mrs. Ron Doornink  
Robert I. Fendrich Family Trust  
Mr. and Mrs. Peter J. FitzGerald, Sr.  
Estate of Jay B. Foote, Jr.  
Mr. and Mrs. Bruce A. Gates  
Mr. Samuel Hall, Jr.  
Mr. and Mrs. Charles F. Holden III  
Mr. and Mrs. Don Hutchins, Jr.  
Estate of Hazel M. Johnson  
Lt. Col. and Mrs. Alice S. Konze  
Estate of Harriet R. Kutik  
Mr. Brock R. Landry and Mrs. Diane  
M. Casey-Landry

Estate of Jennie C. Li  
Laurie D. Lima Trust  
Mr. and Mrs. Richard Meyer III  
The Neubrecht Family Trust  
Estate of Harvey L. Panzer, Jr.  
Ms. Jean Perin  
Estate of Josephine Ann Perrella  
Mrs. Nancy G. Pyne  
Rogers Rissler Foundation  
Mr. and Mrs. C. T. Rowe  
Estate of Theresa R. Shapiro  
Estate of Eleanor Shelly  
Shure Family Charitable Foundation  
Estate of Dorothy Singleton  
Mrs. Rachel Stern  
Estate of Betty C. Stich  
Mrs. Marianne Stohlman  
Estate of Stanley Vomacka  
Estate of Margery L. Weil  
Ms. Virginia A. Weil  
Estate of Margaret A. Wilson  
Estate of Murlyn V. Wolstenholm

#### **\$25,000 to \$99,999**

Mr. and Mrs. James G. Aldigé III  
The Honorable Hushang Ansary and  
Mrs. Ansary  
Alfred Bartel and Margaret Bartel  
1992 Revocable Trust  
Estate of John A. Beaty  
Ms. Catherine P. Bennett and  
Mr. Fred Frailey  
Mr. and Mrs. John D. Beveridge  
Elizabeth R. Black Revocable Trust  
Mr. Richard F. Blackburn  
Mr. and Mrs. David G. Bradley  
Estate of Rosa Braun  
Michael Brewer and Janet Brown  
Charitable Fund  
Mr. and Mrs. Marvin P. Bush  
Mr. Landon H. Butler and  
Ms. Noa C. Gimelli  
Estate of Ida T. Cavoli  
Mr. Scott Cawthon  
The Honorable Jennifer and  
The Honorable Ronald Christie

Ms. Concetta DiLeo  
Max and Victoria Dreyfus Foundation  
Mr. and Mrs. Alan P. Dye  
Miss Grace M. Elliott  
Estate of Paul Escalante  
Ms. Linda K. Eyestone  
Estate of Edward Joseph Fabish  
Ms. Barbara Falltrick  
Estate of Anita M. Farmer  
The Honorable and Mrs.  
Victor H. Fazio  
Estate of Claire Fearnside  
Mrs. Andrea S. Ferris  
Mr. and Mrs. Drew Figdor  
Estate of Howard E. Foltz  
The Carl M. Freeman Foundation, Inc.  
Mrs. Kimberley D. Fritts and  
Mr. Francis M. Turner  
The Honorable Craig Fuller and  
Mrs. Fuller  
Mr. and Mrs. Rafe Furst  
Helen M. Galvin Charitable Trust  
Lewis T. Gardiner Estate  
Mr. Thomas Gardner  
Mr. and Mrs. Joseph Gleich  
Mr. Phil Gordon  
Estate of Patricia O. Greenwell  
Estate of Mr. and  
Mrs. Van Buren Hansford  
Estate of J. Harriet Hanson  
Estate of Sarah A. Hayat  
Mr. and Mrs. Phillip Hellmuth, Jr.  
Mr. and Mrs. Terry J. Houlihan  
Mr. and Mrs. Charles S. Houser  
Joel & Carol Jankowsky Foundation  
Estate of Elsie D. Johnson  
Mr. and Mrs. Thomas H. Johnston  
Mrs. Leslie A. Karr  
Mr. Anthony P. Kavanagh  
KBPK Foundation  
Virginia J. Kintz Charitable  
Remainder Trust  
Charles A. Kraenzle Colon Cancer  
Foundation  
The Lebensfeld Foundation

Estate of Hal Litzius  
Mr. and Mrs. Gary R. Lytle  
Ms. Kathryn A. MacLane and  
Mr. Dan Alcorn  
Estate of Pasquale A. Maresco  
Mr. and Mrs. Michael McGettigan  
Mr. and Mrs. Mark D. McKinnon  
Mr. and Mrs. Michael R. Megargee  
Irene B. Miller Foundation, Bank of  
America, N.A., Co-Trustee  
Mr. Chris Moneymaker  
Estate of Diane M. Montini  
Mrs. Angela Moore  
Dr. James L. Mulshine and  
Dr. Pamela Mulshine  
Mr. and Mrs. Arthur H. Nash  
Mr. and Mrs. Greg O'Brien  
Sylvan and Ann Oestreicher  
Foundation, Inc.  
Estate of Lonetta C. Patterson  
Mrs. Marjorie F. Perin  
Mr. Markus Persson  
Peterson Family Foundation  
Estate of Sylvia Petters  
Mr. Dennis Phillips  
Ms. Joann A. Piccolo and  
Mr. Timothy Carmody  
Estate of Doreen L. Pietraszkiewicz  
The Lynn R. & Karl E. Prickett Fund  
Mr. and Mrs. Alfred C. Quenneville  
Mr. and Mrs. Rollee Quinn  
Catherine B. Reynolds Foundation  
Rocksprings Foundation  
The Juliet Rosenthal Foundation, Inc.  
Ida I. Schaefer Trust  
Marian A. Schwab Revocable Trust  
Estate of Alfred J. Shaw  
The Honorable and  
Mrs. Kenneth W. Starr  
Mr. and Mrs. Kenneth E. Stinson  
Ken and Ann Stinson Fund  
Estate of Claire B. Strub  
Mr. and Mrs. Mark A. Taylor  
Estate of Overton Arnold Thompson  
Mr. and Mrs. Jonathan M. Topodas

Mr. David Tintera and Mr. Joey Toth  
Estate of Ione M. Uphoff  
Mr. and Mrs. Robert A. Vanderhye  
Estate of Colleen Mae Veith  
Estate of Jan P. Vette  
Mr. and Mrs. G. D. Vieth  
Mrs. Sharon Borg Wall  
Mrs. Irene E. Walters  
Mr. Paul Wasicka  
Mr. Robert S. Weil, Sr.  
Mr. and Mrs. Anthony Welters  
Estate of Sara H. West  
Mrs. Laura S. Williams  
Mr. James B. Wittrock  
The Yuen Foundation  
Mr. Robert H. Zeps  
Estate of Edith M. Zimmerman  
Estate of Bernice Zuber

#### **ORGANIZATIONS**

##### **\$1,000,000 and above**

Amgen  
Amgen Foundation  
AstraZeneca LP  
Awesome Games Done Quick  
Bristol-Myers Squibb Oncology  
Genentech, Inc.  
Gilead Sciences  
GlaxoSmithKline  
Lilly USA, LLC  
Matthew Hill Foundation, Inc.  
Merck & Co., Inc.  
Novartis Pharmaceuticals  
Corporation  
Pfizer Inc.  
Pharmacia Corporation  
Roche  
Sanofi  
Susan G. Komen  
Walmart Foundation  
**\$500,000 to \$999,999**  
Eisai Inc.  
National Association of Broadcasters  
PhARMA

##### **\$100,000 to \$499,999**

Abbott Laboratories  
AbbVie, Inc.  
Akin, Gump, Strauss, Hauer & Feld,  
L.L.P.  
American Cancer Society  
American Council for Excellence &  
Opportunity  
American Society of Clinical  
Oncology  
AmerisourceBergen  
Astellas Pharma  
AT&T  
Bank of America  
Bayer Healthcare  
Beckman Coulter  
The Boeing Company  
Caesar's Entertainment Inc.  
Celgene Corporation  
Comcast Corporation  
COMSAT International Holdings  
Daimler  
Deloitte  
EMD Serono, Inc.  
Ernst & Young LLP  
Exact Sciences Corporation  
FedEx Corporation  
Ford Motor Company  
FoxKiser  
General Dynamics Corporation  
General Motors Foundation  
Georgetown Lombardi  
Comprehensive Cancer Center  
The Gloria Heyison Breast Cancer  
Foundation  
Helsinn Group  
Hologic, Inc.  
Humble Bundle, Inc.  
IBM Employee Services Center  
Johnson & Johnson  
Kellogg Company  
The Lance Armstrong Foundation  
Living In Pink, Inc.  
Lockheed Martin  
Mac Heist  
Microsoft Corporation

NACDS Foundation  
National Race for the Cure  
NCTA - The Internet & Television  
Association  
New York Life  
Northrop Grumman Corporation  
Onyx Pharmaceuticals Inc  
Otsuka America Pharmaceutical, Inc.  
PwC  
Qwest Communications  
Salt River Project  
SBC Foundation  
SBC Telecommunications, Inc.  
Schering-Plough Corporation  
Schering-Plough Legislative  
Resources L.L.C.  
SIFMA  
Southern Company  
Takeda Pharmaceuticals  
International Co.  
TE Connectivity Ltd.  
Time Warner, Inc.  
Toyota Motor North America, Inc.  
Tribune Company  
Twitch Interactive, Inc.  
Tyco International  
United Parcel Service  
United Way of the National Capital  
Area  
US Oncology  
Verizon  
Viacom  
The Yetee LLC

##### **\$25,000 to \$99,999**

1-800 Contacts, Inc.  
A&E Television Networks  
Accenture LLP  
Active Network  
Advanced Medical Technology  
Association  
Aetna Foundation, Inc.  
Aetna Health Plans  
Aflac  
Agir Ltd.  
Agouron Pharmaceuticals



Aircraft Owners & Pilots Association  
Airlines for America  
Alaska Poker Association  
Alberto Culver USA, Inc.  
Alcalde & Fay  
Alexandria Real Estate Equities  
Allied Domecq Spirits & Wine USA, Inc.  
Allstate Insurance Company  
Alston & Bird, LLP  
American Airlines, Inc.  
American Beverage Association  
American Chemistry Council  
American College of Radiology  
American Express Company  
American Express Foundation  
American Fuel & Petrochemical Manufacturers  
American Gaming Association  
American Gastroenterological Association  
American Insurance Association  
American Medical Association  
American Society for Radiation Oncology  
American-Italian Cancer Foundation  
AmeriChoice Health Services, Inc.  
Annapurna Games  
APCO Worldwide  
Apple Inc.  
Arthur Andersen LLP  
Association for Accessible Medicines  
Aventis Pharmaceuticals, Inc.  
B.K. Miller Company, Inc.  
Baker & Hostetler, LLP  
Battelle  
Biotechnology Industry Organization  
Black Entertainment Television  
BlueCross BlueShield Association  
BlueCross BlueShield of Nebraska  
BNSF Railway Company  
Boston Scientific Corporation  
The Brink's Company  
Brownstein Hyatt Farber Schreck  
BTIG, LLC  
The Capital Group Companies, Inc.  
Capital One Bank  
Capitol Counsel  
Cardinal Health

Cardon Outreach  
CBS Eco Media  
C-Change  
CenterPoint Energy, Inc.  
CenturyLink  
Chicago Mercantile Exchange  
Christus Health  
CIGNA  
Cingular Wireless  
Cisco Systems, Inc.  
Citigroup Management Corp  
Coalition of Cancer Cooperative Groups, Inc.  
The Coca-Cola Company  
College of American Pathologists  
ConAgra Foundation, Inc.  
Corman Construction, Inc.  
Council of Fashion Designers of America  
Covidien  
Covington & Burling  
CTIA-The Wireless Association  
Dell Computer Corporation  
Dell Direct Giving  
Devolver Digital  
Diageo North America, Inc.  
Discovery Communications  
Dominion Resources Services, Inc.  
Dropbox  
Duke Energy Corporation  
Edison Electric Institute  
El Paso Corporation  
Emergent BioSolutions  
Endo Pharmaceuticals  
Entergy Corporation  
Exxon Mobil Corporation  
Facebook  
Fangamer  
The Financial Services Roundtable  
FLUOR  
The Focus Foundation  
Freddie Mac  
Friedman, Billings, Ramsey, & Co-Charitable Foundation, Inc.  
Full Tilt Services Corporation  
Fund to Prevent Cervical Cancer  
Game Time Marketing, LLC  
GE Company  
General Motors LLC

Genomic Health, Inc.  
Georgia Department of Education  
Glover Park Group, LLC  
Goldman, Sachs & Co.  
Green Flash Brewing Co.  
Grocery Manufacturers of America, Inc.  
GW University Hospital's Center for Breast Cancer Services  
H. J. Heinz Company  
Harrah's Operating Company, Inc.  
Health Care Services Corporation  
Hilton Washington Dulles Airport  
Honeywell International, Inc.  
Hunton & Williams LLP  
IGH Charitable Foundation, Inc.  
iHeartMedia, Inc.  
Instinet  
International Association for the Study of Lung Cancer  
International Physician Networks LLC  
Jack Horner Communications, Inc.  
Ketchum  
Kiewit Companies Foundation  
Koch Industries, Inc.  
KPMG LLP  
Ladies Charity Classic of the National Capital Area  
Lung Cancer Alliance  
Mark Krueger & Associates, Inc.  
MassMutual  
MasterCard Worldwide  
Mayfair Partners, L.P., Boston Market  
Mehlman Castagnetti Rosen Bingel & Thomas, Inc.  
Middle-Atlantic Section of the PGA  
The Midtown Group  
Mortgage Insurance Companies of America  
Motorola  
Mylan Laboratories, Inc.  
Myriad Genetics, Inc.  
The NASDAQ Stock Market, Inc.  
Nathanson + Hauck LLC  
National Association of Convenience Stores  
National Dialogue On Cancer Foundation  
Nestlé  
News Corporation Ltd.

NextEra Energy, Inc.  
The Nickles Group LLC  
Nortel Networks  
NRA-Institute for Legislative Action  
Nuclear Energy Institute  
Opus East, L.L.C.  
Palmetto Peloton Project, Inc.  
Palms Casino Hotel  
Patton Boggs LLP  
Personal Care Products Council  
The Pfizer Foundation  
PGA Tour Charities, Inc.  
PNC  
Poker Players Alliance  
Poker Productions  
Pokerstars  
Progress Energy  
The Prostate Cancer Foundation  
Quest Diagnostics  
Quinn Gillespie & Associates, LLC  
Recording Industry Association of America  
Reliant Resources, Inc.  
Reuters  
Rockwell Automation  
Ron Ruffennach Classic  
Rush University Medical Center  
Schering-Plough Foundation, Inc.  
Shell Oil  
Siemens Corporation  
Sprint Nextel Corporation  
Stohman Volkswagen, Inc.  
Story Partners  
Sun Safety Alliance  
Sunoco, Inc.  
Taiho Oncology  
Tarplin, Downs, and Young, LLC  
Tele-Communications, Inc.  
Tesaro  
Teva Pharmaceuticals  
Time Warner Cable  
tinyBuild LLC  
The Travelers Indemnity Company  
TTR Sotheby's International Realty  
TXU Business Services  
U.S. Chamber of Commerce  
Union Pacific Corporation  
United Airlines

United States Steel Corporation  
United States Telecom Association  
United Way Crusade of Mercy  
United Way of Greater Philadelphia & Southern New Jersey  
United Way of New York City  
United We Care  
Universal Music Group  
Van Scoyoc Associates  
Vanderbilt University Medical Center  
Venable Foundation, Inc.  
Vodafone U.S. Foundation  
VP Racing Fuels, Inc.  
Wachovia  
WEST\*GROUP Management LLC  
Williams & Jensen, PLLC  
Wine and Spirits Wholesalers of America  
Women's Shooting Sports  
Foundation of the National Capital  
World Bank Community Connections Fund  
World Reach, Inc.  
Wyeth

Ms. Jeasica Bowman  
Ms. Effie Brant Evans  
Ms. Nancy J. Butler  
Mr. William Carriere  
Ms. Adriana Chuparosa  
Mr. and Mrs. Michael Comella  
Ms. Rosalie Lazzara Cooper  
Mrs. Christine Destefano  
Ms. Audrey Deuel  
Mr. Damien Diehl  
Ms. Joyce R. Edwards  
Mr. Ezzat Ekladios  
Ms. Carolyn Emond  
Mrs. Christina Falck Armstrong  
Ms. Eileen FitzGerald  
Mr. and Mrs. Peter J. FitzGerald, Sr.  
Ms. Linda Fonticella  
Ms. Juliana Franco  
Ms. Regina M. Frau  
Mr. James Y. Gaines  
Ms. Karen Gilyard  
Mr. Chris Gray  
Mr. Herb Gross  
Ms. Patty Gunderson  
Ms. Casey Harvan  
The Hawkins Family  
Ms. Colleen Heising  
Ms. Valeria Hicks Smith  
Mr. Steve Hiebner  
Mr. Harry Holloway  
Ms. Lillie V. Howell  
Mr. John Lavieri and Ms. Sara Hunter  
Mr. Don Hutchins  
Mr. Ryann Irvin  
Mr. Lars Johansson  
Ms. Kelly Johnston  
Ms. Lissa Kelley  
Ms. Tammy Kingman  
Ms. Kathy Kreidler  
Ms. Florence Lambert  
Mr. Roland Lavallee  
Ms. Fong S. Lee  
Mr. Dale "Hoss" Lewis  
Ms. Jessica Lopez-Kerns  
Ms. Gina Mack  
Ms. Connie McDonald  
The Honorable and  
Mrs. Raymond J. McGrath

---

---

## MEMORIAL AND HONOR TRIBUTES

These tributes are special ways to honor friends, loved ones and colleagues. Honor gifts often mark a special occasion like Mother's or Father's Day, Bar/Bat Mitzvahs or birthdays. Many couples also designate the Prevent Cancer Foundation® as a recipient of contributions in lieu of wedding or shower gifts. In return, the Foundation sends a card acknowledging these thoughtful donations.

## HONOR TRIBUTES

Mr. and Mrs. James G. Aldigé III  
Mr. Bruce Bates  
Ms. Katie Belcher

Mr. Bob McKenzie  
 Mr. Charlie McKinney  
 Mr. Roger Mettenburg  
 Ms. Danielle Milazzo  
 Ms. Monika Morrow  
 Ms. Paula Moss  
 Mr. Jeff Moyer  
 Mr. Maurice Mussafer  
 Ms. Marian Nardi  
 The Neely Family  
 Mr. Erol Ozdemir  
 Mr. and Mrs. Bill Pearce  
 Mr. Richard Pettingell  
 Ms. Edwina Rising  
 Ms. Ann Rothblatt  
 Ms. Mary A. Sagdahl  
 Ms. Irene Salpeter  
 Ms. Joan Marie Sapienza  
 Mr. John Daurelle Schambough  
 Mr. Robert Schmidt, III  
 Ms. Rachna Sharma  
 Ms. Julie Werner Simon  
 Mr. and Mrs. Joe Tejido  
 Ms. Susan Vanatter  
 Mr. Jiagui Wang and  
 Ms. Minxia Yang  
 Mr. Norman Weaver

## MEMORIAL TRIBUTES

Ms. Susan Acerba  
 Mr. Sione Tui'tupou Ahokovi  
 Mr. Charlie Anderson  
 Mrs. Maria Araujo  
 Mr. John "TotalBiscuit" Bain  
 Ms. Mary Baumann  
 Ms. Liz Bender  
 Ms. Nancy Bender  
 Mr. Jordan Bender  
 Ms. Patricia Berg  
 Mr. Richard Berkenfeld  
 Mr. Clarence A. Beutel  
 Mr. Robert Blake, Sr.  
 Ms. Margaret Blinka  
 Ms. Adrea Anne Bregman  
 Mrs. Claudius P. Brownley III  
 Mr. Manuel A. Claro  
 Mr. Jimmy Collins

Mr. Alphonsus J. Commane  
 Ms. Mary Conley  
 Ms. Michele Conley  
 Ms. Kelly Mae Cook  
 Mr. Dennis Crounse  
 Ms. Lauren McAdam Csordas  
 Mr. Travis Cumberland  
 Mr. Tom Deback  
 Mr. Keith Donnelly  
 Ms. Liz Donohue  
 Mr. Danny Doss  
 Ms. Jocelyn Edison  
 Ms. Mary Edmonds  
 Mr. Michael T. Errecart  
 Ms. Kim Esterman  
 Ms. Phillippa Faulconer  
 Mr. Bill Faunce  
 Mr. Sanford K. Figdor  
 Mr. Garth Reynolds Fisher  
 Mr. Will Foppiano  
 Mr. Leslie Forrest, Jr.  
 Mr. Joseph D. Franchitti  
 Ms. Toni Frazin  
 Mr. Gilbert Frazin  
 Ms. Harriet Gamache  
 Ms. Frances Garcia  
 Ms. Sheila Goldberg  
 Ms. Geraldine Gordon  
 Mr. Fred Graybill  
 Ms. September Harkey  
 Mr. James W. Harris, Sr.  
 Mr. Willie Hassell  
 Ms. Frances Janice Horn  
 Mr. Dennis W. Hutchison  
 Mr. Kenneth Jenkins  
 Mrs. Laurel B. Kamen  
 Ms. Karen Krayank  
 Mr. Russell Landry  
 Mr. Yonggun Lee  
 Ms. Lesley Levy  
 Mr. Joseph W. Levy  
 Dr. Kun Frank Lu  
 Mr. Bandit Luce  
 Ms. Patricia A. Lusch  
 Ms. Barb Lynch  
 Mrs. Barbara Lytle

Ms. Andie Gail Marcus  
 Ms. Bev McCormick  
 Mr. Christopher D. McTarsney  
 Dr. Martin Melchers  
 Ms. Peggy Mitchell  
 Mr. John C. Noel III  
 Mr. Mike Noorani  
 Ms. Ann Olmstead  
 Mr. Kenneth R. Osler  
 The Honorable Michael G. Oxley  
 Mr. Peter Pagano, Sr.  
 Mr. Fotis Papadopoulos  
 Ms. Gale Parish  
 Mr. Pasquale Patruno  
 Mr. Roland D. Pelletier  
 Ms. Sharon Prinz  
 Ms. Lucy Ramirez  
 Mr. Adonis "Rick" Rickett  
 Mr. Eugene Santoro  
 Mr. John Schaffer  
 Ms. Nancy Schelling  
 Mr. Aaron Schmidt  
 Ms. Patricia Schnell  
 Ms. Joan Schwartz  
 Ms. Lynn Landry Smith  
 Mr. Stanley Smith  
 Mr. Tunc Sozerman  
 Mr. William A. Stark  
 Ms. Margaret Fox Steger  
 Ms. Harmonie Stone  
 Ms. Margaret Ann T. Stuart  
 Mrs. Rita Sullivan  
 Ms. Shirley Terrell  
 Ms. Leigh Thackaberry  
 Ms. Barbara Jean Tice  
 Mr. Bruce Wallace  
 Ms. Mary Weightman  
 Ms. Elizabeth Ann Buckley Welch  
 Ms. DeAnna Whittington  
 Ms. Anne H. Whittle  
 Mr. Walter Wayne Wilde  
 Mr. Dain Anderson Williams  
 Ms. Dawn Wooten  
 Ms. Sandy H. Zeek

## THE DEVEREAUX SOCIETY (\$25,000 AND ABOVE)

In 1993, Leslie Cameron Devereaux established the Richard C. Devereaux Outstanding Young Investigator Award in memory of her father who died of lung cancer. This grant or fellowship supports promising lung cancer prevention research.

## INDIVIDUALS

### \$100,000 to \$999,999

Estate of Jay B. Foote, Jr.  
 Matthew Hill Foundation, Inc.  
 Estate of Stanley Vomacka

### \$50,000 to \$99,999

Mr. Frank C. Carlucci III and  
 Mrs. Marcia Myers Carlucci  
 Miss Leslie Devereaux  
 Shure Family Charitable Foundation  
 Mr. David Tutera and Mr. Joey Toth

### \$25,000 to \$49,999

Mr. and Mrs. Greg O'Brien

## ORGANIZATIONS

### \$1,000,000 and above

Awesome Games Done Quick

### \$100,000 to \$999,999

AbbVie, Inc.  
 Amgen  
 Genentech, Inc.  
 Gilead Sciences  
 Hologic, Inc.  
 Twitch Interactive, Inc.  
 The Yatee LLC

### \$50,000 to \$99,999

Devolver Digital  
 Eisai Inc.

Living In Pink, Inc.  
 Novartis Pharmaceuticals Corporation  
 Pfizer Inc.  
 PWC

### \$25,000 to \$49,999

Abbott Laboratories  
 Aflac  
 Annapurna Games  
 Bank of America  
 Bristol-Myers Squibb Oncology  
 Facebook  
 Fangamer  
 Ford Motor Company  
 Helsinn Group  
 Hilton Washington Dulles Airport  
 Humble Bundle, Inc.  
 Merck & Co., Inc.  
 Mylan Laboratories, Inc.  
 National Association of Broadcasters  
 PhRMA  
 Tesaro  
 Walmart Stores, Inc.

## THE CARLUCCI SOCIETY (\$10,000 TO \$24,999)

Marcia Myers Carlucci and Frank C. Carlucci III\* have been longtime friends of the Prevent Cancer Foundation®. A supporter of the Foundation for more than two decades, Marcia Carlucci served as the Foundation board chair for six years, and continues to serve as chair emerita and generous supporter of research grants and fellowships.

## INDIVIDUALS

The Cecile & Fred Bartman Foundation  
 The Honorable Jennifer and  
 The Honorable Ronald Christie  
 The Carl M. Freeman Foundation, Inc.

Mr. and Mrs. Bruce A. Gates  
 Mr. and Mrs. Charles S. Houser  
 Mr. Joseph Hrapek  
 Mr. Boris Kochergin  
 Sachiko Kuno Foundation, Inc.  
 Mr. Brock R. Landry and  
 Mrs. Diane M. Casey-Landry  
 Mr. Edward Lasley  
 Ms. Jean Perin  
 Ms. Joann A. Piccolo and  
 Mr. Timothy Carmody  
 Mr. David Pratt  
 The Juliet Rosenthal Foundation, Inc.  
 Mr. and Mrs. Jonathan M. Topodas  
 Ms. Virginia A. Weil  
 Estate of Kathy Winslowe  
 The Yuen Foundation

## ORGANIZATIONS

Advanced Medical Technology Association  
 Aetna Health Plans  
 Akin, Gump, Strauss, Hauer & Feld, L.L.P.  
 Alexandria Real Estate Equities  
 American Airlines, Inc.  
 American Chemistry Council  
 American College of Radiology  
 American Express Company  
 American Fuel & Petrochemical Manufacturers  
 AmerisourceBergen  
 Anonymous  
 Association for Accessible Medicines  
 Astellas Pharma  
 The Boeing Company  
 Capital One Bank  
 Capitol Counsel  
 Celgene Corporation  
 CenturyLink  
 Chevron  
 Comcast Corporation  
 Community Oncology Alliance, Inc.  
 CTIA-The Wireless Association  
 Darice, Inc.  
 Deloitte  
 Disruptor Capital  
 Dropbox

\* Deceased

Edison Electric Institute  
 EMD Serono, Inc.  
 Exact Sciences Corporation  
 Exxon Mobil Corporation  
 Glenmark Pharmaceuticals  
 Glover Park Group, LLC  
 The Goodyear Tire & Rubber Company  
 Green Flash Brewing Co.  
 Health Care Services Corporation  
 The Home Depot  
 Husch Blackwell Strategies  
 International Association for the Study of Lung Cancer  
 Level Brands  
 Mallinckrodt Pharmaceuticals  
 Mehlmán Castagnetti Rosen Bingle & Thomas, Inc.  
 The Michaels Companies, Inc.  
 Michigan Rod Products  
 The Midtown Group  
 Myriad Genetics, Inc.  
 The NASDAQ Stock Market, Inc.  
 Nathanson + Hauck LLC  
 NCTA - The Internet & Television Association  
 New York Life  
 Northrop Grumman Corporation  
 Omaze Inc.  
 Oracle Corporation  
 Otsuka America Pharmaceutical, Inc.  
 SIFMA  
 Southern Company  
 Stohlman Volkswagen, Inc.  
 Super Meat Boy  
 Susan G. Komen  
 Taiho Oncology  
 Tarplin, Downs, and Young, LLC  
 U.S. Chamber of Commerce  
 Verizon  
 Viacom  
 VP Racing Fuels, Inc.  
 Williams & Jensen, PLLC

## THE MULSHINE SOCIETY (\$5,000 TO \$9,999)

James L. Mulshine, M.D., is internationally recognized as a leader in lung cancer research. For more than 25 years, he has shared his expertise with the Foundation, serving as Vice Chairman and Scientific Director of the Board of Directors, Co-Chair of the Scientific Review Panel and Chairman of the Steering Committee for the annual Quantitative Imaging Workshop.

### INDIVIDUALS

Estate of Florence Atkins  
 Mr. Stacey Blackburn  
 Ms. Nicole Currie  
 The Honorable and Mrs. Victor H. Fazio  
 Mr. and Mrs. Marvin S. Fertel  
 Mr. and Mrs. Peter J. Fitzgerald, Sr.  
 Dr. and Mrs. Michael T. Gocke  
 The Honorable and Mrs. Chuck Hagel  
 Mr. Henrik Elstad Hodne  
 Mr. and Mrs. Don Hutchins, Jr.  
 Joel & Carol Jankowsky Foundation  
 Ms. Stephanie Kanwit  
 Mr. Andrii Korotkov  
 Estate of Phyllis K. Kroeger  
 Estate of Carla Laemmle  
 Ms. Sharisse Leacock  
 Laurie D. Lima Trust  
 Mr. Vincent Liu  
 Mr. and Mrs. Gary R. Lytle  
 Mr. and Mrs. William F. Magner III  
 Mr. and Mrs. Rafat Mahmood  
 Mr. Preston Moore  
 Dr. James L. Mulshine and Dr. Pamela Mulshine  
 Mr. Ray Narvaez, Jr.  
 Mr. Glen O'Neill  
 Mr. and Mrs. Paul Phaneuf  
 Estate of Doreen L. Pietraszkiewicz  
 Mr. Daniel Ploch

Mr. Bruce Pyenson  
 Mr. and Mrs. Rollie Quinn  
 Rogers Rissler Foundation  
 Mr. Vinay Sarapeshkar  
 Ms. Michelle Silva  
 Mr. and Mrs. Martin L. Johnson  
 Mr. Robert Zaslo  
 Mr. Joseph A Daywalt

### ORGANIZATIONS

Alston & Bird, LLP  
 Amgen Cycling Club  
 Arconic  
 AT&T  
 Biotechnology Industry Organization  
 Broome County Sheriff's Department  
 BTIG, LLC  
 Citigroup Inc.  
 CoStar Group  
 Crossroads Strategies  
 The Delaney Bay Fund  
 Duberstein Group  
 Epigenomics, Inc.  
 Express Scripts  
 FLUOR  
 Gulf Coast Regional Medical Center  
 iHeartMedia, Inc.  
 Insurance Associates  
 Johnson & Johnson  
 Los Angeles Galaxy  
 Lung Cancer Alliance  
 MasterCard Worldwide  
 Microsoft Corporation  
 NextEra Energy, Inc.  
 Nuclear Energy Institute  
 Personal Care Products Council  
 PNC  
 Quest Diagnostics  
 Rockwell Automation  
 Rush University Medical Center  
 The San Francisco Foundation  
 Takeda Pharmaceuticals International Co.  
 TE Connectivity Ltd.  
 TTR Sotheby's International Realty  
 Tucker Consulting

## THE LEVIN SOCIETY (\$1,000 TO \$4,999)

Bernard Levin, M.D. is a gastroenterologist and leading expert in cancer prevention and early detection. A Professor (Emeritus) at the MD Anderson Cancer Center, he serves as Co-Chair of the Foundation's Scientific Review Panel, generously devoting his time to ensure research grant proposals are assessed through a rigorous peer review.

### INDIVIDUALS

Mr. and Mrs. James G. Aldigé III  
 Mr. and Mrs. James G. Aldigé IV  
 Anonymous  
 Mr. Bryce Aona  
 Mr. Omer Aru  
 Mr. Robert Audet  
 Mr. Michael Aylward  
 Mr. Kevin Bailey  
 Ms. Diane Baker  
 Mr. Anthony Baldocchi  
 Mr. Aaron Barany  
 Mr. Dan Barron  
 Mr. William Bartig  
 Mr. Timothy Barton  
 Mr. Patrick Basham  
 Mr. Brandon Beckwith  
 Mr. Drew Beierwaltes  
 Mr. Vincent Bellec  
 Ms. Catherine P. Bennett and Mr. Fred Frailey  
 Mr. Nicolae Berbece  
 The Honorable and Mrs. Jack Bergman  
 Mr. David Bernard  
 Mr. and Mrs. John D. Beveridge  
 Mr. John Bidwell  
 Mr. Robert Bingham  
 The Blackburn Foundation Inc.  
 Mr. Max Blair  
 Mr. Chris Blume  
 Mr. Harvey R. Boltwood  
 Ms. Lanni Boyd  
 Mr. David Boylan  
 Ms. Karen Bralley-Triplett  
 Mr. Raphael Brambilla  
 Ms. Jan Bresch  
 Michael Brewer and Janet Brown Charitable Fund  
 Mr. Ryan Burke  
 Mr. and Mrs. Marvin P. Bush  
 Mr. Landon H. Butler and Ms. Noa C. Gimelli  
 Ms. Meghan Cahill  
 Mr. Brendan Cain  
 Mr. Vincent Cali  
 Mr. Gary Campbell  
 Mr. Joran Carroll  
 Mr. Timothy Carver  
 Mr. and Mrs. Sean P. Casey  
 Mr. Allan Cecil  
 Mr. Arnold Cha  
 Mr. Theodore Chao  
 Mr. Luis Hector Chavez  
 Mr. Sean Chiplock  
 Ms. Sylvie Cierpucha  
 Mr. Charles Clark and Mrs. Patricia Franco  
 Mr. Philip Cohn-Cort  
 Ms. Kelsey Collado  
 Mr. Christopher Connett  
 Mr. Joseph Coombs  
 Mr. Jay N. Cranford III  
 Ms. Christine Csizmadia  
 Mr. Jonathan Daniel  
 Mr. Christopher Danks  
 Mr. Matthew Danyeur  
 Mr. Tim Day  
 Dr. P. J. Wakelyn and Ms. Suzanne C. DeFrancis  
 Mr. Alexandre Delphin  
 Mr. Nicholas DeTommaso  
 Mr. Andrew Damos  
 Ms. Gloria Dittus  
 Mr. Nathan Dols  
 Mr. and Mrs. Stephen M. Dowicz  
 Mr. Philip Downey  
 Mr. Andrew Drake  
 Mr. Doug Drewry

Mr. Ken Duberstein  
 Mr. Sean Dwyer  
 Mr. and Mrs. Alan P. Dye  
 Ms. Melissa E. Edwards  
 Mr. Steven Eisner  
 Mr. Ralph El Hage  
 Mr. and Mrs. Richard Elliott, Jr.  
 Mr. Michael Ennis  
 Mr. Ammaar Esmailjee  
 Mr. Ed Falkowitz  
 Mr. Michael Farcasin  
 Mr. Anthony Fariello  
 Mr. Jason Flynn  
 Ms. Ann K. Flynn-Terrell  
 Ms. Catherine Foltz  
 Mr. J. J. Foote  
 Dr. Richard A. Frank  
 Mr. Kyle Franz  
 Mr. Gavin Free  
 Mr. Kurt Gallagher  
 Ms. Kelsey Gardner  
 Mr. Christopher Gears  
 Mr. Sam Geduldig  
 Mr. Maiké Geng  
 Mr. Shane Gill  
 Mr. Ben Goldhaber  
 Mr. Max Gonzalez  
 Dr. and Mrs. Gary Gordon  
 Mr. Patrick Gradie  
 Ms. Cara Grayer Johnson  
 Ms. Kayla Green  
 Mr. and Mrs. Brian J. Griffin  
 Mr. John Gross  
 Mr. Christopher Gunn  
 Ms. Danielle Hagen  
 Mr. Matt Hammerly  
 Mr. and Mrs. John A. Hanley  
 Dr. Marilyn A. Harris  
 Mr. Zeke Harris  
 Mr. Christopher Hegedus  
 Mr. Michael Heiberg  
 Mr. Kyle Higgins  
 Ms. Melinda Holladay  
 Mr. Eric Holmes  
 Mr. and Mrs. Michael W. Hopke  
 Mr. Justus Hörberg  
 Mr. and Mrs. Terry J. Houlihan  
 Mr. Matt Housh



Mr. and Mrs. John W. Howard, Jr.  
 Mr. Sawyer Hrdlicka  
 Mr. Calvin Hsu  
 Mr. Henry Hughes  
 Mr. and Mrs. John P. Hynes, Jr.  
 Mr. Cyrille Imbert  
 Mr. Jeremy Ir  
 Mr. Jeffrey Irwin  
 Mr. Willem Jager  
 Mr. Samuel Jones  
 Mr. Igor Justino De Souza  
 Ms. Yildiz Kabaran  
 Mr. Malavarayan Kabilan  
 Mr. Maksim Kaliada  
 Mrs. Leslie A. Karr  
 Ms. Deborah Kaufman  
 Mr. Jason Kellagher  
 Mr. Ian Kelly  
 Mr. Clark Kerr  
 Mr. and Mrs. Frederick T. Kieferle, Jr.  
 Mr. Michael King  
 Mr. John D. Kling II  
 Ms. Jessica Kosmowski  
 Mr. Gregory Kownacki  
 Mr. Sebastian Kronlund  
 Mr. and Mrs. Phillip E. Lantz  
 Mr. and Mrs. Mathew Lapinski  
 Mr. and Mrs. Thomas M. Lawler, Jr.  
 Mr. and Mrs. Rodney Lawrence  
 Mr. Brian Lawson  
 Mr. Matthew Lee  
 Mr. Andrew Lehmer  
 Dr. and Mrs. Peter L. Levin  
 Mr. Jason Lewis  
 Mr. Michael G. Littlefield  
 Mr. Simon Lövgren  
 Mr. Matthew Maas  
 Mr. Michael Marquardt  
 Mr. Jared Masterson  
 Mr. Justin McCarthy  
 Mr. and Mrs. Patrick J. McCarty  
 The Honorable and  
 Mrs. Raymond J. McGrath  
 Mr. Michael McGuinness  
 Ms. Joanna McIntosh  
 Mr. and Mrs. Scott McIntyre  
 Ms. Nan McRaven  
 Ms. Kathleen Merlo

Mr. and Mrs. Daniel P. Meyer  
 Mr. James E. Millar and Mrs. Tracy  
 Hitt Millar  
 Mr. Stephen Miller  
 Mr. Marc Mischkowsky  
 Ms. Stephanie Misson  
 Mr. Scott Mitchell  
 Ms. Mikaela Molina  
 Estate of Diane M. Montini  
 Mr. and Mrs. Jerry B. Moore  
 Mr. Anthony Morfitt  
 Mr. Jared Mueller  
 Mr. Ryan Myers  
 Mr. and Mrs. Arthur H. Nash  
 Mr. Davis Nelson  
 Mr. Christian Neumeister  
 Mr. Greg Nickerson  
 Mr. Robert Nix  
 Mr. and Mrs. Richard C. Notebaert  
 Mr. John O'Connell  
 Mr. Ted Okon  
 Mr. Robert O'Leary  
 Mr. Benjamin Peake  
 Mr. Nicholas Pena  
 Mr. Philip Pestinger  
 Mr. and Mrs. Alfred C. Quenneville  
 Mr. Tyler Reeves  
 Mr. Harry E. Rhoads, Jr.  
 Mr. Buford Richardson  
 Mr. Benjamin Ridgway  
 Ms. Andrea R. Roane and  
 Mr. Michael E. Skehan  
 Ms. Franny Rock  
 Mr. Jeremy Rodencal  
 The Frank J. Romano Foundation Inc.  
 Dr. and Mrs. Ryan Roop  
 Mr. Jean-Francois Roy  
 Mr. Mark Rutledge  
 Mr. Andrew Sakai  
 Mr. Kyle Sampson  
 Mr. David Sapery and  
 Ms. Lisa Campi-Sapery  
 Mr. Jon Sargent  
 Mr. Balaji Sarpeshkar  
 Mr. Matthew Sawyer  
 Mr. Patrick Scarborough  
 Mr. Samuel Schetterer  
 Mr. and Mrs. David J. Schiappa

Ms. Nicole Schlorke  
 Mr. Edward Schmidt  
 Mr. Benjamin Schneider  
 Mr. Walter Christopher Sczudlo  
 Mr. Maxime Serrano  
 Mr. and Mrs. Shaun M. Sheehan  
 Mr. Edwin A. Sheridan IV  
 Mr. Preston Shimek  
 Mr. Jonathan Shoff  
 Mr. Jarrod Shrader  
 Mr. and Mrs. Brian K. Shure  
 Mr. Alexander Sikora  
 Mr. Pawan Singh  
 Mr. and Mrs. Charles Smith  
 Mr. Justin Smith  
 Mr. Steven Southall  
 Ms. Patricia Sowick  
 Mr. Nathan Spencer  
 Ms. Tracy Spicer  
 Mr. Mike Sramek  
 Mr. Michael Staib  
 Mr. Charles Stanianas  
 The Honorable and  
 Mrs. Kenneth W. Starr  
 Steele Family Foundation  
 Steele Foundation LLC  
 Mr. Charles Stellar  
 Mrs. Carol Steuart  
 Mrs. Marianne Stohlman  
 Mr. Brian Stringari  
 Mr. Steven Sundrud  
 Mr. Aaron Teague  
 Mr. and Mrs. Robert J. Test  
 Mr. Stefan Thomas  
 Mr. and Mrs. J. Timothy Thompson  
 Sami & Annie Totah Family  
 Foundation  
 Mr. Carl M. Trevisan  
 Mr. Benjamin Truymen  
 Ms. Megan Turney  
 Mr. Irfaan Umarji  
 Mr. and Mrs. Robert A. Vanderhye  
 Mr. Jacob Vega  
 Mr. Daniel Victor  
 Mr. Jacob Visotski  
 Mr. James Vogel  
 Mr. William F. Vosbeck  
 Mr. John Wachsman

Mr. Justin Wainscott  
 Mr. Lewis Wall  
 Mr. Gary Weasel  
 Mr. Alexander Webb  
 Mr. Fabien Wegh  
 Mr. Joseph West  
 Mr. James Westbury  
 Mr. and Mrs. Mark A. White  
 Mrs. Laura S. Williams  
 Mr. and Mrs. Ted Williams  
 Mr. Scott Wilson  
 Mr. Zachary Wilson  
 Ms. Kimberly Wineland  
 Mr. Alexander Young  
 Mr. Michael Young  
 Mr. Robert Yu  
 Ms. Amber Yust  
**ORGANIZATIONS**  
 AmazonSmile  
 American Cancer Society  
 American University Dance Team  
 Angel Eyes Productions, Inc  
 APCO Worldwide  
 Avenue Solutions  
 Boehringer Ingelheim  
 Pharmaceuticals, Inc.  
 Catholic Central High School of  
 Detroit  
 Clark Construction  
 Clark Geduldig Cranford & Nielsen  
 Craftworks Foundation  
 Dovel Technologies, Inc.  
 Elekta  
 Franklin Square Group  
 Franklin Templeton Investments  
 Fresenius Medical Care  
 Georgetown Lombardi  
 Comprehensive Cancer Center  
 Greene County Medical Society  
 Hopcat Lincoln  
 IBM Employee Services Center  
 Jeffrey J. Kimbell & Associates  
 Lindsay Management Company LLC  
 MercuryGate  
 Mercy Hospital Springfield  
 Northern Capital Insurance Group  
 NorthWest Pipe Company  
 Oro Valley Police

Passport BMW  
 Peterson Wilmarth and  
 Robertson LLP  
 Ratner Companies  
 Reese, Yeatman & Associates, Inc.  
 Sanford Police Department  
 SELA Roofing and Remodeling  
 Simpson Development, Inc.  
 TAI Charitable Foundation  
 The Hartford  
 Thorn Run Partners, LLC  
 TRUIST  
 Turl Street Ventures LLC  
 United Way of Greater Philadelphia &  
 Southern New Jersey  
 United Way of Rhode Island  
 Vanderbilt University Medical Center  
 Wells Fargo Advisors, LLC  
 World Bank Community  
 Connections Fund  
 XL Catlin Political Risk, Credit  
 and Bond

## THE KESHISHIAN SOCIETY (\$500 TO \$999)

Harold M. Keshishian was a founding  
 board member of the Prevent Cancer  
 Foundation®. His leadership and  
 commitment to the Foundation's  
 mission helped change the  
 landscape of cancer prevention and  
 early detection for generations of  
 individuals affected by cancer.

## INDIVIDUALS

Mr. Jameson Achuff  
 Mr. Jacob Adams  
 Mr. Mark Adams  
 David S. Alberts, M.D.  
 Mr. Dino Alvarado  
 Mr. Frederiksen Anders  
 Mr. Daniel Andersen  
 Mr. Peter Ankowitsch  
 Anonymous  
 Mr. Joshua Arcilla  
 Mr. Caleb Atherton

Mr. Samuel August  
 Mr. Jim Avery  
 Mr. Christopher Backer  
 Mr. Vincent Baier  
 Mr. Trevor Bart  
 Mr. Kerry Bassett  
 Mr. Amol Batra  
 Mr. Daniel Bauman  
 V. Max Beard/Lollee Judd Richardson  
 Trust  
 Mr. Lucas Beattie  
 The Abram C. Becker Fund of In  
 Faith Community Foundation  
 Mr. Joshua Bennett  
 Ms. Linda K. Berdine  
 Mr. Christopher Berg  
 Mr. Alexandre Bergeron  
 Mr. and Mrs. Jonathan Bergner  
 Ms. Audrey Besse  
 Ms. Jade Bilkey  
 Mr. Bryan Bishop  
 Mr. Vern Bittner  
 Mr. Joshua Blair  
 Mr. Hans Blom Pedersen  
 Mr. Joshua Bollinger  
 The Honorable and  
 Mrs. David E. Bonior  
 Mr. Michael Bowling  
 The Dorothy C. Boyce Fund  
 of the T. Rowe Price Program for  
 Charitable Giving  
 Ms. Anne Bradbury  
 Ms. Roberta Bregstone  
 Mr. Thomas Breitenfeldt  
 Mr. Timothy Brightbill  
 Mr. John Brooks  
 Mr. Michael Brooks  
 Mr. Bryan Brown  
 Mr. Steven Brudenell  
 Mr. John Buckley  
 Mr. Sean Buckley  
 Mr. Steve Bursten  
 Mr. Joseph Cable  
 Ms. Claudia Callaway  
 Mr. Domenic Callocchia  
 Mr. Jose L. Cardenas  
 Mr. Alexander Chace  
 Mr. Joseph Charlot

Mr. Brian Chau	Ms. Barbara L. Furst	Mr. and Mrs. Leo S. Horey III	Mr. Steven Lin	Mr. Matthew Park	Mr. William Sanders
Mr. Fong Chih	Mr. Jason Gaby	Mr. Ethan Horgor	Mr. Mike Lorbetske, Jr.	Mr. Troy Parker	Mr. Manuel Sarter
Mr. Brian Christoffel	Mr. Dmitry Garanin	Mr. Stephen Horrocks	Mr. Michael Macintosh	Mr. Jonathan Parkes	Mr. David Sassen
Mr. Wilson Chu	Mr. and Mrs. Peter G. Gartlan	Mr. James Hotz	Mr. Ryan Mackman	Mr. Jordan Parkin	Mr. Thomas Scanlon
Mr. David Chuhay	Mr. Nickolas Gellerman	Mr. and Mrs. William B. Howard	Mr. Nicolas Maguin	Mr. Anay Patel	Mr. Eduard Schmidt
Mr. Stephen B. Clark	Mr. Nicholas Gerlock	Ms. Elizabeth A. Hoy	Mr. Alexander Malmberg	Mr. Michael Patkoske	Mr. Daniel Schroeder
Mr. Brad Clarke	Ms. Julia Ghafouri	Ms. Janet Hudson	Mr. and Mrs. James Maloney	Mr. Robert Pavel	Mr. Joseph Schulz
Mr. Matthew Claypotch	Mr. Joshua Gladstone	The Dr. and Mrs. Herbert Hughes Fund	Mr. Phillip Mann	Mr. Loren Peace	Mr. Douglas Schwartz
Mr. Donald Clemens	Mr. Adam Gleitman	Mr. Abraham Hunt	Mr. Gerrit Marsch	Mr. Johnson Peng	Mr. Christopher Scott
Mr. Daniel Collin	Mr. Wade Glenn	Mr. David Hunt	Mr. Antonio Martinez	Mr. Brian Pereira	Mr. Curtis Seeman
Mr. Benjamin Cooley	Mr. Michael Glover	Mr. David Hunter	Ms. Ellen McCarthy	Mr. Cody Perschbacher	Mr. Peter Segall
Mr. Daniel Cornelius	Mr. and Mrs. Neil J. Goetzman	Mr. Shane Iler	Ms. Cheryl McGuire	Mr. Jonathon Pham	Mr. Matthew Sell
Mr. Noel Cower	Mr. Charles Goldhaber	Mr. Tom Jackson	Mr. Brian McHugh	Mr. Johannes Piehler	Mr. Chad Serrant
Mr. David Criminski	Mr. Charles-Henri Gourdon	Ms. Sierra James	Mr. Samuel McLaughlin	Mr. Stephen Platt	Mr. Jacob Shaak
Mr. Xavier Dang	Mr. Lance Grady	Mr. Henry Jetmore	Mr. Thomas McLaughlin	Mr. Stephen Polacek	Mr. and Mrs. C. Stephen Shaw, Jr.
Mr. Benjamin Daniel	Mr. Robert L. Graveline	Mr. Steven Jose	Mr. Keegan McMaster	Ms. Christine Pollack	Mr. Steven Sherrill
Mr. and Mrs. Wallace L. Darneille	Mr. James Gregor	Mr. Eric Joseph	Mr. Robert L. Menefee	Mr. Rajesh Pradhan	Mr. Eric Shields
Mr. Donovan Daumé	Mr. Daniel Griffen	Ms. Shabnam Kazmi	Mr. Advay Mengle	Ms. Marianne Prendergast	Mr. Raymond Short
Mr. Dick Davis	Mr. Jeremy Griggs	Mr. John Kearsley IV	Mr. Christopher Menthe	Mr. Alexander Preston	Mr. and Mrs. Stephen R. Sieke
Mr. Christopher Dayringer	Mr. Tom Guest	Mr. Christopher Keates	Mr. Brandon Meyer	Mr. Matt Prince	Mr. John Silvestri
Mr. Patrick Delaney	Mr. and Mrs. Joseph M. Guiffre	Mr. Ira Keener	Mr. Kyle Michaels	Mr. Thomas R. Graves	Ms. Meredith Simpson
Mr. and Mrs. E. K. Delph	Mr. Tony Gutowski	Mr. Gerald Keller	Mr. Gregory Miller	Mr. Peter Raymond	Mr. Jacob Skarphol
Mr. Kunal Desai	Mr. Mitchell S. Hailey	Ms. Wendy Kelly	Mr. James Monaco	Mr. David Rebarchak	Mr. and Mrs. Steven Skonberg
Mr. Xavier Desclaux	Mr. Cody Hall	Mrs. Melissa Anne Keshishian	Mr. Thomas Moore	Ms. Christina Reed	Mr. Benjamin Smith
Mr. Sean DeVarney	Mr. Robert Hall	Mr. Kristopher Kirkland	Mr. Edward Mullen	Mr. Daniel Reed	Mr. Michael Smith
Mr. Andrew Dickman	Mr. Daniel Hamann	Mr. Erik Kiss	Mr. Andy Murray	Mr. Bobbey Reese	Mr. Jeff Snow
The Honorable and Mrs. Norman D. Dicks	Mr. Ronald Hampton	Mr. Rupert Klopfer	Mr. Don Myers	Mr. Kevin Regamey	Mr. and Mrs. Peter Snyder
Mr. Daniel Nico Diehl	Mr. Daniel Hanson	Mr. Michael Knechtel	Mr. Kenneth Naishtat	Mr. and Mrs. Terrence E. Reideler	Mr. James Soliman
Mr. Brian Diffell	Mr. Jan Erik Hanssen	Mr. Justin Koehler	Sis Nash Memorial Fund of the Hampton Roads Community Foundation	Mr. and Mrs. Peter B. Reilly	Ms. Ashley Soucar
Ms. Elizabeth Difiore	Mr. Daniel Harrigan	Ms. Jennifer Konrad	Mr. Mark Nauta	Mr. Michael Reinke	Mr. and Mrs. Kenneth P. Spain
Ms. Concetta DiLeo	Mr. Julian Harttung	Mr. James Kostiuk	Mr. Fabien Rendu	Mr. Fabien Rendu	Mr. Daniel Spiers
Mr. Thomas Dixon	Mr. Thomas P. Hasbrouck	Ms. Caitlin Koury	Mr. William Reznak	Mr. William Reznak	Mr. William C. Sprouse
Mr. Sean Dohring	Mr. Donald Hay	Mr. Paul Kratt	Mr. Derek Richard	Mr. Derek Richard	Mr. Kurtis St. Denis
Ms. D. Chris Downey	Ms. Martha F. Hay	Mr. Zak Kreiter	Mr. Nick Ripper	Mr. Nick Ripper	Mr. Anders Stenervall
Mrs. Raissa Downs	Ms. Jessica Heath	Mr. Mark Kupferschmidt	Ms. Mary H. Rippert	Ms. Mary H. Rippert	Mr. and Mrs. Edward R. Stettinius
Ms. Nancy W. Duncan	Mr. Noah Heck	Mr. Chase Kustra	Mr. Aaron Ritter	Mr. Aaron Ritter	Ms. Laura Stewart
Mr. Philip Dwyer	Ms. Stacey Heins	Mr. Jordan LaCrosse	Mr. Justin Robb	Mr. Justin Robb	Mr. John A. Stipicevic
Mr. Zachary Edwards	Mr. Aaron Henner	Mr. Dean Laganieri	Ms. Holly Robinson	Ms. Holly Robinson	Ms. Barbara A. Stohlman
Mr. Anders Ekermo	Mr. Michael Hentges	Mr. Jeremy Lambert	Ms. Frances Rock	Ms. Frances Rock	Mr. Cye Stoner
Mr. Marvin Engel	Mr. Drew Hill	Mr. Tipper Langseth	Mr. Kyle Roeschley	Mr. Kyle Roeschley	Mr. Kirtis Stork
Mr. Maximilian Ensikat	Mr. Lukas Hlous	Mr. JohnMark Lau	Mr. Jeremy Roman	Mr. Jeremy Roman	Mr. Daniel Stroj
Mr. Damien Erambert	Mr. Gregory G. Hoffmann	Mr. Joseph Lawson	Mr. and Mrs. Seth D. Rosen	Mr. and Mrs. Seth D. Rosen	Mr. Colin Stryker
Mr. Steven Fackler	Mr. Albin Hofmeijer	The Honorable and Mrs. Patrick J. Leahy	Mr. Michael Ruiz	Mr. Michael Ruiz	Mr. and Mrs. Thomas M. Sullivan
Mr. James Ferdon	Mr. David Hohl	Mr. Andrew Lenning	Mrs. Catherine Stohlman Rusnak	Mrs. Catherine Stohlman Rusnak	Mr. Matthew Swasey
Mr. Sigmund Fidyke	Mr. and Mrs. Charles F. Holden III	Mr. Ethan Leslie	Mr. David Rutter	Mr. David Rutter	Mr. Edward Swinson
Mr. and Mrs. Michael A. Fife	Ms. Michele E. Holt	Ms. Elma Levy	Mr. Matthew Ryan	Mr. Matthew Ryan	Ms. Dafna Tapiero
Mr. and Mrs. Peter J. Fitzgerald, Jr.	Mr. and Mrs. John C. H. Hooff, Jr.		Ms. Jennifer Sagerman	Ms. Jennifer Sagerman	Ms. Amy Tejral
			Mr. Jefferson Saiz Cassins, Jr.	Mr. Jefferson Saiz Cassins, Jr.	Mr. Harry L. Thomas, Jr.

Mr. Frederick Thompson  
 Mr. Logan Thompson  
 Mr. Travis Thorwald  
 Ms. Diane Tilton  
 Mr. Matthew Tjeerdsma  
 Mr. Daniel Todd  
 Mr. JD Tomlinson  
 Ms. Adrienne Tompkins  
 Mr. Peter Tran  
 Mr. Ronald Troyer  
 Ms. Donna Tucker  
 Mr. Arsen Tufankjian  
 Mr. Ryan Turner  
 Mr. Stephen Tweedie  
 Mr. Robert Van Der Veen  
 Mr. Charles C. Venus  
 Mr. Christopher Vincent  
 Mr. Livio von Büren  
 Ms. Julia F. Wade  
 Mr. Maximilian Wagner  
 Mr. Michael Wainwright  
 Mr. and Mrs. Don Walker  
 Ms. Anne E. Wall  
 Ms. Tammy Weeks  
 Mr. Istvan H. Weimann  
 Mr. Justin Weiss  
 Mr. Nicholas Weiss  
 Mr. Christoph Wergen  
 Mr. Benton Whaley  
 Mr. Aldridge Wilder  
 Mr. Christopher Williams  
 Mr. Mark Williams  
 Mrs. Terese T. Williams  
 Mrs. Adrian N. Wilson  
 Mr. Trevor Wilson  
 Mr. Andrew Wissler  
 Mr. Clinton Woltering  
 Mr. Mikhail Woltering  
 Mr. Jeffrey Wong  
 Mr. and Mrs. René R. Woolcott  
 Mr. Jeff Yamarik  
 Mr. Dennis Yatras  
 Mr. Daniel O. Young  
 Dr. and Mrs. Robert C. Young  
 Ms. Kendray Yourtee  
 Mr. Derek Yu  
 Mr. Scott Zadigian  
 Mr. Philip Zahoruyko

Dr. and Mrs. Tom Zorc  
 Mr. Mike Zweers

**ORGANIZATIONS**

AK Steel Corporation  
 Chaumont Law Inc  
 Coastal Community Foundation  
 CSRA  
 eSport.US  
 Fire On The Mountain Buffalo Wings  
 The GE Foundation  
 Jamison & Sullivan, Inc.  
 MOTE Management Company, Inc.  
 Rare Patient Voice, LLC  
 Station 2  
 Thurson Jewelers, Inc.  
 UBS  
 The Virginia Cotillion  
 Walker & Dunlop LLC  
 Xcel Energy

## THE PITT SOCIETY (\$250 TO \$499)

Robert H. Pitt was the first chairman of the Foundation's board of directors. His commitment, wisdom and leadership played an instrumental role in the Foundation's growth.

## INDIVIDUALS

Mr. Jonathan A. Williams  
 Mr. Eric Abbott  
 Mr. Walker Adams  
 Mr. Moshe Adato  
 Mr. Michael Aden  
 Mr. Jeffrey Akers  
 Mr. Richard A. Alderson  
 Mr. Nicholas Allen  
 Ms. Elizabeth Anderson  
 Mr. David Ang  
 Mr. Mark Angelo  
 Mr. Ariel Anzore  
 Mr. Jerome Arnal  
 Mr. Noah Ashby

Mr. Bryan Askins  
 Mr. Matthew At Lee  
 Mr. Teemu Aulanko  
 Ms. Tanya Auzenne  
 Mr. Philip Averill  
 Mr. Timothy Baccus  
 Mr. Drew Bachman  
 Mr. Ted Bacinski  
 Mr. Jordan Back  
 Mr. Thomas-Kevin Bahler  
 Ms. Emily Baker  
 Mr. Jake Baker  
 Mr. Cameron Balch  
 Mr. and Mrs. Charles W. Ballou  
 Mr. David Balls  
 Mr. John Bangert  
 Mr. Marty Barbella  
 Mr. Steven Barrios  
 Mr. Filipe Barroqueiro  
 Mr. Steven Barto  
 Mr. Simon Basilien  
 Ms. Lauren Bassett  
 Mr. Aaron Beal  
 Mr. Jonathan Beal  
 Mr. Luc Bednarek  
 Mr. Karsten Behrmann  
 Mr. Gildor Bélanger  
 Mr. James Bell  
 Mr. Justin Bergen  
 Dr. Barry Berger  
 Mr. David Bergman  
 Mr. Brandon Bergren  
 Mr. Arduino Bertrand  
 Mr. Drew Besse  
 Mr. Alexander Biggs  
 Mr. Jeffrey Billings  
 Mr. Nathaniel Birdsong  
 Mr. Jarrod Bishop  
 Mr. Curt Black  
 Mr. Geoffrey Blake  
 Mr. James R. Blinka  
 Mr. Karsten Bock  
 Mr. Michael Boilen  
 Mr. Benjamin Boit  
 Mr. Bernhard Bonigl  
 Mr. Mitchell Bontrager  
 Mr. Erik Boots  
 Dr. Maarten Bosland

Mr. Adam Bossart  
 Mr. David Bourque  
 Mr. Benjamin Boven  
 Mr. Michael Bower  
 Ms. Emily Bowman  
 Mr. Lawrence Boyer  
 Mr. James Bradfield  
 Ms. Shailaja Brady  
 Mr. Paul Braem  
 Ms. Carrie Brandt  
 Mr. Daniel Bredfeldt  
 Mr. Roger Bredecke  
 Mr. Charlie Brensinger  
 Mr. Cody Brewer  
 Ms. Sarah Brimm  
 Mr. Douglas Britton  
 Ms. Meredith Broadbent  
 Ms. Melanie Brodsky  
 Ms. Sherna S. Brody  
 Mr. Adam Brostowicz  
 Mr. Andrew Brown  
 Mr. Jason Brown  
 Mr. David Broyles  
 Mr. Matthew Brubaker  
 Mr. Clinton E. Brush IV  
 Mr. Ian Bruton  
 Mr. John Bryan  
 Mr. Eric Budensiek  
 Mr. John Budorick  
 Mr. Eric Buehler  
 Mr. Harold Bukoski  
 Mr. Christopher Burkett  
 Mr. Teagan Butler  
 Mr. William Butler  
 Mr. Nicholas Byrd  
 Mr. Darren Caddy  
 Ms. Elizabeth H. Caldwell  
 Mr. and Mrs. Donald R. Calloway, Jr.  
 Mr. Michael Caputo  
 Mr. David Carmichael  
 Mr. Nick Carosi  
 Mr. F. Andrew Carroll III  
 Mr. Scott Carter  
 Mr. Evan Cataldi  
 Mr. Pablo Cervantes  
 Ms. Gloria Chambers  
 Mr. Russell Champoux  
 Mr. Joshua Chaney

Mr. Griffin Charyn  
 Mr. Richard Chatterton  
 Mr. Thomas Chavaudra  
 Mr. Danny Chen  
 Mr. Paul Chen  
 Mr. Andrew Chesley  
 Mr. William Childs  
 Mr. Kyle Christensen  
 Mr. Marc Chu  
 Mr. Robert Chunn  
 Mr. Matthew Clang  
 Mr. Dylan Clardy  
 Mr. August Clark  
 Ms. Melissa Clayton  
 Mr. Winthrop C. Cobb  
 Mr. Christopher Cobbold  
 Mr. Neal Coelho  
 Mr. Kyle Colantonio  
 Mr. Aaron Collier  
 Mr. Larry Collins  
 Mr. Rodger Combs  
 Mr. Matthew Conforti  
 Mr. Mark R. Connelly  
 Mr. Casey Connor  
 Mr. Blake Contreras  
 Ms. Stefanie Contreras  
 Ms. D'Arcy Cook  
 Ms. Shawn Cooke  
 Mr. Shawn Cordell  
 Mr. Aymar Cornut  
 Mr. Brian Correia  
 Mr. Chris Costes  
 Ms. Helen Cox  
 Mr. Robert R. Coyne  
 Mr. Jeff Craft  
 Ms. Rachel Creary  
 Mr. Cyrille Crespy  
 Mr. Cameron Crockrom  
 Mr. Emmanuel Cron  
 Mr. Dakota Crowder  
 Ms. Sheila Cullen  
 Mr. Paul Curran  
 Mr. Christopher Curry  
 Mr. Steven Cutri  
 Mr. Bradley Dail  
 Mr. Bear Damen  
 Ms. Erin Darling  
 Mr. Tristan Darricau

Mr. Brian Davis  
 Mr. Kevin Davis  
 Mr. Ryan Davis  
 Mr. Evan DeFilippo  
 Mr. Travis DeFluiter  
 Mr. Nathan Deisinger  
 Mr. Henry Denoux  
 Mr. Jeffrey DePassio  
 Mr. Nicholas Depinet  
 Mr. and Mrs. J. Caulley Deringer  
 Mr. James Detrick  
 Mr. Nick Detweiler  
 Mr. Benjiman Deyo  
 Ms. Linda Dival  
 Mr. Michael Dix  
 Mr. Jonathan Dodson  
 Mr. Marc Dominjon  
 Mr. Bryan Donnelly  
 Mr. John Donnelly  
 Mr. Samuel Donow  
 Mr. Patrick Doody  
 Mr. Thomas Dow  
 Mr. Timothy Doyle  
 Mr. William Drescher  
 Mr. Dajun Duan  
 Mr. Paul Ducko  
 Mr. and Mrs. Waller T. Dudley  
 Mr. Alex Dudman  
 Mr. Matthew Dufresne  
 Mr. Andrew Dugal  
 Mr. Florian Dumas  
 Mr. and Mrs. William F. Dunbar  
 Mr. Sion Duncan  
 Mr. Charlie Duncan-King  
 Mr. and Mrs. Edward E. Dyson  
 Mr. William Eckert  
 Mr. William H. Edington  
 Mr. Andrew Eierman  
 Ms. Wendy Elie  
 Mr. Isaac Ellsworth  
 Mr. Mark Elrod  
 Mr. David Emerson  
 Ms. Karen Engel  
 Mr. Devin Engelmann  
 Mr. Branden Entinger  
 Mr. Michael Erick  
 Mr. Tim Ernsberger  
 Mr. Jonathan Ethridge



Mr. Kyle Fairchild	Mr. David Grimes	Mr. and Mrs. Francis J. Hopke	Mr. Darren Karakaedos	Mr. Anthony LiBrizzi	Mr. Chris McNeil
Mr. Douglas Fedor	Mr. Artur Grochowski	Mr. Gasper Horvat	Mr. Matthew Karashin	Mr. Patrick Lingafelter	Mr. and Mrs. Robert C. McNutt
Mr. Christian Feigel	Mr. Alex Gruber	Mr. Alex Houston	Mr. Peter Kasting	Mr. John Link	Ms. Tina McPherson
Mr. Dan Fine	Mr. Manuel Guerra	Mr. Ryan Howard	Mr. Matthew Kava	Mr. William Litten	Mr. Brian T. McVay
Mr. Lucas Fischer	Mr. Isaac Guthrie	Mr. Paul Howden	Mr. Erik Keller	Mr. James Loe	Mr. Girish Menon
Mr. Philippe Flamm	Ms. Arin Gutu	Mr. Gary Hudson	Mr. Mike Kellogg	Mr. Connor Logan	Mr. Mike Merin
Ms. Joan Flippin	Mr. and Mrs. Charles C. Habliston IV	Mr. Thomas Hudson	Mr. Wesley Kempton	Mr. Henri Long	Mr. and Mrs. Dennis I. Meyer
Mr. Gary Flowers	Mr. Thomas Hahn	Mr. Joshua Huffman	Mr. Jonas Ketelsen	Mr. Todd Longendelpher	Mr. Jeff Meyer
Mr. Sean Fluster	Mr. Danish Haider	Mr. Christopher Hunt	Mr. Nasir Khan	Mr. Richard R. Loucks	Mr. Shaun Meyer
Mr. and Mrs. Michael W. Fogarty	Mr. Charles Haik	Mr. Oliver Hunt	Mr. Doug Kieselbach	Mr. Zac Lovoy	Mr. Andrew Meyers
Mr. Thomas Foote	Mr. Christopher Halbach	Mr. and Mrs. Harry I. Hunter	Mr. John Kim	Mr. Beau Luck	Mr. Mike Micheau
Mrs. Mary Jane Frahm	Ms. Lesley Hall	Mr. Evan Hurley	Mr. Matthew Kinzelman	Mr. Howard Luck	Mr. Michael Mielniczuk
Mr. Paul Francis	Mr. Jonas Halvarsson	Mr. Andrew Hushbeck	Mr. Joseph Kirwen	Mr. Jesse Luehrs	Mr. Phillip Miller
Mr. Alexander Freedman	Mr. Stephen Hammack	Mr. David Huston	Mr. Joseph Knips	Mr. Jason Lynch	Mr. Anthony Mills
Mr. and Mrs. Roger P. Furey	Mr. Christian Hammond	Ms. Cindy Hutchings	Mr. Zachary Knoles	Mr. Dominic Macaluso	Dr. and Mrs. Wayne Minami
Mr. Sam Gafkjen	Mr. and Mrs. Bertrand M. Harding, Jr.	Mr. Eric Iseneker	Ms. Sarah Koch	Mr. Andrew MacDonald	Mr. Gregory Minjack
Mr. Brian Gagnon	Mr. Michael Harkins	Mr. Thierry Isler	Mr. Dylan Kozicki	Mr. and Mrs. James B. MacDonald III	Mr. David Mitchell
Ms. Quiana Gainey	Mr. Bruce Harris	Mr. Jason Jack	Mr. Nick Kraayenbrink	Mr. Justin Madill	Mr. Donald Mitchell
Mr. Jonathan Galluzzi	Mr. Zachary Harris	Mr. Nathan Jackson	Mr. Steffen Kristiansen	Mr. Robert Magee	Mr. Nick Mitrano
Mr. Tyler Garding	Mr. James Harrison	Ms. Sara Jackson	Mr. Michael Kunze	Mr. Marc Magruder	Ms. Elizabeth Mixer
Mr. Allan Gardner	Mr. Jeremy Harvie	Mr. and Mrs. Leo C. Jardot	Mr. Ethan Kuperman	Mr. Fredrik Mählström	Mr. Bradley Momberger
Mr. David E. Gardner	Mr. Wa'el Hashad	Mr. Erik Järlemyr	Mr. Hannes Küsel	Mr. Dan Maiorano	Mr. Leo Monelli
Mr. William Gardner	Mr. William Hatcher	Mr. Eric Jarman	Ms. Mary Kutka	Mr. Gregg Majikas	Mr. Eric Moore
Mr. Philipp Gerber	Ms. Rashanda Hathaway	Ms. Karla Jaundoo	Mr. Peter Kyrouac	Mr. Thomas Mancini	Mr. Eddie Morgan
Mr. Maximilian Gerlock	Mr. James Haughney	Mr. Baptiste Jeannot	Mr. Josh Kytta	Mr. James Manley-Buser	Mr. Jonathan Morrisette
Mr. Antoine Gersant	Ms. Karole Head	Mr. Mychal Jefferson	Ms. Heidi-Susanna Laitinen	Mr. Seastian Manthey	Mr. Cody Morton
Mr. Thomas Gibbons	Ms. Cindy Hedgers	Mr. Franklin Jen	Mr. David Lampenschferf	Mr. Daniel Marino	Mr. Jonathan Moss
Mr. Cole Giene	Mr. Derek Heiner	Mr. David Jenkins	Ms. Cecelia Lance	Mr. Tyler Marklyn	Ms. Madeline Movesian
Ms. Fiona Glaser	Mr. Eric Hellen	Mr. Robert Jenkins	Mr. James LaPlant	Mr. and Mrs. Harry Marlin	Mr. Steven Mowery
Mr. Philip Golbraikh	Mr. David Hendler	Mr. John Jenks	Mr. Olov Larson Lundberg	Mr. Jackson Marriott	Ms. Kristin Murphy
Mr. Dario Gomez	Mr. Iain Hendry	Mr. John M. Joerger, Sr.	Mr. Michael Lau	Mr. Alexander Martens	Mr. Daniel Murray
Mr. Luis Goncalves	Ms. Gail Hennek	Mr. Austin Johnson	Mr. Garrett Leach	Mr. Joshua Martin	Mr. Steven Murray
Mr. Nate Gonzalez	Mr. Matthew Henschel	Mr. Ben Johnson	Mr. Brendan Leahey	Mr. Colin Masterson	Mr. Jason Myers
Mr. Richard T. Gould	Mr. Thorsten Herbert	Mr. Chris Johnson	Mr. Christopher Lee	Mr. Ben Mathews	Mr. James Nance
Mr. Nickolas Graczyk	Mr. Andrew Herch	Mr. Thomas Johnson	Mr. Ethan Lee	Mr. Joseph Matteucci	Mr. Sharif Nasr
Mr. Jason Grad	Mr. Steven Herzog	Mr. Kim Johnsson	Mr. Theodore R. Legler	Mr. Loic Matthey	Mr. Wilfred Navarro
Mr. Cody Grahman	Mr. Christopher Hill	Mr. Brandon Jones	Ms. Mercedes Legrand	Mr. Kyler Mauldin	Mr. Kevin Nee
Mr. Mark Grandi	Mr. Orrin Hill	Mr. Jackson Jones	Mr. Max Leisgen	Mr. Ryan May	Mr. Theodore Needham
Ms. Lynn Gray	Mr. Ryan Hobbs	Mr. and Mrs. Robert C. Jones	Mr. Daniel Lemcke	Mr. Joseph Mazeika	Mr. Michael Neligh
Mr. Gerard Green	Mr. Neil Hodgson	Mr. Stephen Jones	Mr. Cody Lenfest	Mr. Robert McCall	Mr. Jeffrey Nelson
Mr. Jacob Green-Racette	Mr. Adam Hoefler	Mr. Alexander Jordan	Mr. Philip Lennon	Mr. Marshall McClure	Ms. Jenna Netland
Mr. Arno Greiler	Mr. Daniel Hoekstra	Mr. Benjamin J. Kacher	Mr. Christopher Leonard	Mr. Braden McCrillis	Mr. Clayton Newman
Mr. Adam Grenier	Mr. Ryan Hoes	Mr. and Mrs. Marc A. Kahn	Ms. Kay Leseure	Mr. Robert McGaughey	Mr. Joseph Newman
Mr. and Mrs. Michael C. Gribbon	Mr. Paul Holsberger	Mr. Albert Kallis	Ms. Caitlin Leu	Mr. Richard McIntyre	Mr. Andy Nibley
Mr. Andreas Griebbaum	Mr. Brad Holsclaw	Ms. Joan Kanatas	Ms. Marcia Levi	Mr. Matthew McMahon	Mr. and Mrs. Stuart B. Nibley
Mr. Damon Griggs	Mr. Logan Holzwarth	Dr. and Mrs. Arthur E. Kane	Mr. and Mrs. H. F. Levy	Mr. Vincent McNamar	Mr. Christopher Nilan

Mr. Robert Nobles	Mr. Jeremy Pluym	Mr. Stuart Rosenfeld	Mr. Brian Sherlock	Mr. Andrew Telepak	Mr. Tao Wang
Mr. David Noel	Mr. Kris Pomphrey	Mr. Adam Rosenfield	Mr. Jarrod Sherwin	Mr. Josh Terasaki	Mr. Adam Ward
Mr. Lukas Nordin	Mr. Thomas Pomponio	Mr. William Rossi	Mr. Kyle Sherwood	Mr. Bob Thomas	Mr. Matthew Warner
Mr. Shawn Noyes	Mr. Kory Ponting	Mr. Sebastian Rost	Mr. Joshua Shiflett	Mr. Kelly Thomas	Mr. John Washam-Morgan
Ms. Sarah Null	Mr. Anthony Poon	Mr. and Mrs. Donald Rothblatt	Mr. David Short	Mr. and Mrs. Robert D. Thomas	Mr. Christopher Watford
Mr. Jacob Oberman	Mr. Zavian Porter	Mr. Brandon Rourke	Mr. Isaac Short	Mr. William P. Thomas and Ms. Veronique G. Perarnaud	Mr. Bryan Weaver
Mr. John Oberreuter	Mr. John Portwood	Mr. and Mrs. Clifford H. Routh	Mr. Keith Shusterman	Mr. Alex Thompson	Mr. Xander Webb
Mr. Collin O'Brien	Mr. Scott Posey	Mr. Jérémie Roy	Mr. Zachary Silk	Mr. Brian Thompson	Dr. Louis M. Weiner
Dr. and Mrs. Michael O'Connell	Mr. Michael Potts	Mr. Gregory Ruby	Mr. Jose-Manuel Silva	Mr. Matthew Thompson	Mr. David Weiss
Mr. and Mrs. Charles P. O'Connor	Mr. Michael Poveromo	Mr. James Rukstalis	Mr. Malte Simonsen	Mr. Robert Thompson	Mr. Lucas Wells
Mr. Corey O'Connor	Ms. Anna Powell	Mr. Peter Ryszkiewicz	Mr. James Sirard	Mrs. Dolores M. Timmons	Mr. Adam M. Welsh
Mr. Casey Odell	Mr. Sam Pöyhönen	Mr. Sivasankar Sabapathy	Mr. Peter Sloan	Mr. Robert Tissot	Mr. Adam Westall
Mr. Jonathan Odne	Mr. Elliot Price	Mr. Jas Sajjan	Mr. Louis Sloven	Mr. Karsten J. Tjernagel	Mr. Jens Weyen
Mr. Matthew Okopinski	Mr. Abraham Pringle	Mr. Omar Saleem	Mr. and Mrs. Carson B. Smith	Ms. Stephanie Tomasso	Mr. Andrew White
Mr. Zachary Oldson	Mr. Naram Qashat	Ms. Sarah Salpeter	Mr. Joshua Smolow	Mr. Matthew Toner	Mr. and Mrs. Kenneth White
Ms. Colleen O'Malley	Mr. and Mrs. Frank J. Quirk	Mr. Gage Salzano	Mr. Jan Smrcina	Mr. Alastair Torrance	Mr. Oscar Whizar
Mr. Christoph Ordelheide	Ms. Katherine Rahmes	Mr. Carlos Sandoval	Mr. Joshua Snow	Mr. Thomas Townsend	Mr. Alexander Widerström
Ms. Ashley O'Sullivan	Mr. Emilio Ramos	Mr. Erik Sandström	Mr. Kenneth So	Mr. Volker Treff	Mr. Finley Wiese
Mr. Mike Owen	Mr. Ian Ramsey	Mr. Brent Saner	Mr. Siyu Song	Mr. Ryan Tripp	Mr. Zachary Wikholm
Mr. Adrian Packel	Mr. Jonathon Ratski	Mr. Aaron Schaer	Mr. Chris Sonnier	Bruce J. Trock, Ph.D.	Mr. Benjamin Wiles
Mr. Sundeeep Pandita	Mr. Anthony Paul Raymond	Mr. Steven Schalek	Mr. Seth A. Sosbee	Mr. Karl Tronnes	Mr. Daniel Wilkinson
Mr. Vincent Paquette	Mr. Micah Reedy	Mr. Dan Scheetz	Mr. John Speights	Mr. Matthew Tropicano	Mr. Dave Wilkinson
Mr. David Parady	Mr. John Reeske	Mr. Hayden Schiff	Mr. Brian Scott Spitzer	Mr. Nikolai Troubetzkoy	Mr. Alexander Williams
Mr. Stuart Parry	Mr. and Mrs. Thomas L. Regnell	Mr. James Schifflin	Mr. and Mrs. Joseph G. Spitzer	Mr. Alden Truby	Mr. Dennis Williams
Mr. Stephen Parsons	Mr. Grant Reid	Mr. Brad Schmidt	Mr. Roy T. Starry, Jr.	Ms. Helen Tsitsouli	Ms. Ellen Williams
Ms. Sonal Patel	Mr. James Rennie	Ms. Judith G. Schmidt	Ms. Helen Stefan	Mr. Andre Twupack	Dr. Jon W. Williams, Jr.
Mr. Justin Patrin	Mr. David Reynolds	Mr. and Mrs. Donald W. Schneider	Mr. Kyle Stegner	Mr. Daniel Underwood	Mr. Jonathan Wilson
Mr. Kyle Paulsen	Mr. Nicholas Riccio	Mr. Brian Scholes	Mr. Arthur F. Stern	Mr. Jason B. Van Pelt	Mr. John Witting
Mr. Tyler Pausma	Mr. Malcolm Richardson	Mr. Andrew Schoonmaker	Mr. Kevin Stewart	Ms. Cicely Vaughn	Mr. BJ Witts
Ms. Sylvia Peddycord	Mr. Mitchell Richardson	Mr. David Schuetz	Mr. Richard Stohlman, Jr.	Mr. Kevin Velado	Mr. Adam Wolf
Mr. William Pellen	Mr. Patrick Riley	Mr. Cody Schuffelen	Ms. Patrick Stokes	Ms. Nicola Ventura	Mr. Eli Woods
Mr. Jeremie Pelletier	Mr. Walt Rinehart	Mr. Georg Schürz	Mr. Ellen Strain	Mr. Jacob Versprille	Mr. Charles R. Wooten
Mr. Devin Peltier-Robson	Mr. and Mrs. Daniel W. Riordan	Mr. Joshua Schussler	Mr. and Mrs. Robert A. Swearingen	Mr. Arie Verstoep	Mr. Robert Wooten
Mr. Nicholas Peper	Mr. Seamus Riordan	Mr. Jay Schwab	Mr. Chad Swenson	Mr. Ricardo Verwoert	Mr. James Wordelman
Mr. Eric Perret	Mr. Geoffrey Riutta	Mr. Kelly Scott	Mr. Terry Tai	Mr. Sean Vickery	Mr. Aaron Wright
Mr. Bret Petonquot	Mr. Eric G. Rizzo	Mr. Patrick Secrist	Mr. Chris Talbert	Mr. Bertrand Vidal	Mr. Donald L. Wright
Mr. Nathaniel Pettis	Mr. Andrew Roach	Mr. David Séguin	Ms. Rebecca Tallent	Mr. Benjamin Villain	Ms. Christina Wuest
Mr. Jeremy Petty	Mr. Brenton Roberts	Mr. Andrew Severs	Ms. Collette Tamez	Ms. Roni Vismanen	Mr. Jonathon Wyza
Mr. Jonathan Phippen	Mr. Chris Robichaud	Mr. Brian Sexton	Mr. Tim Tanason	Mr. Kevin Vognar	Mr. Justin Xu
Mr. Jacob Piatek	Mr. Sean Robinson	Ms. Sheila Shaffer	Mr. Patrick Tandler	Mr. Eric Von Hagen-Jamar	Mr. Andrew Yates
Mr. Matthew Piazza	Mr. Jeffrey Rodencal	Mr. Brandon Shalander	Friends of John Tanner	Mr. Thorben Vornholz	Mr. David Yeung
Mr. Mark Pielemeier	Mr. James Rodriguez	Mr. Jarad Shannon	Mr. Stephen Tanner	Mr. Mitchell Wade	Mr. Jason P. York
Mr. Quentin Pierre	Ms. Sandra T. Rodriguez and Mr. Roger K. Westerberg	Mr. Connor Sharpe	Mr. Brandon Tattersall	Mr. Hendrik Wagemann	Mr. Matthew Young
Mr. Robert Pike	Mr. Kristian Røen	Mr. David Sharpe	Mr. Eric Taylor	Mrs. Selma J. Wakeham	Mr. Eli Youngs
Mr. Samuel Pittman	Mr. Nicholas Roget-King	Mr. William Shedd	Mr. and Mrs. R. Dawson Taylor	Ms. Sascha Walter	Mr. Andrey Zakharenko
Ms. Sandra L. Plummer		Ms. Michelle Shepardon	Mr. Guli Tefferi		Mr. Andre Zatta

Mr. Nicolas Zehnder  
Mr. Ruoxuan Zhu  
Mr. Chris Zoeterman  
Mr. Trevor Zuck  
Mr. Damien Zufferey  
Mr. Thomas Zukas

## ORGANIZATIONS

Arlington Heating and Air  
Conditioning, Inc.  
The Caminiti Insurance Group, LLC  
Churchill  
Clarendon Animal Care  
EMC Insurance Companies  
Falling Rock  
Latham Centers  
New River Taphouse  
Racketboy Charity  
Sam's Quick Shop, Inc.  
United States Cold Storage  
United Way of Central Maryland  
United Way of the National Capital  
Area  
Vine & Barley Stuart  
World of Beer  
Young Basile

## BENEFICIARY EVENTS

Individuals and organizations select the Prevent Cancer Foundation® to be the beneficiary of funds raised through events they organize and host. Beneficiary events vary in size and type, and include lemonade stands, art shows, water ski competitions, online video games, silent auctions and more.

9Round Fitness Kick Event  
Awesome Games Done Quick  
Barb Lynch Fencing Tournament  
Breakaway from Cancer  
BTIG Charity Day  
Champion Awareness

Christin and Steve Vitalie's Wedding  
El Paso Craft  
Gordon Biersch  
Latham Craft Fair  
Martinis Matter  
No-Shave November  
Resolute Tattoo  
Rock & Run 5k  
Rock Fit  
Strike Out Cancer  
Time to Thrive  
VP Racing Fuels  
Wendy and Erick's Wedding  
Young Basile

## IN-KIND DONORS

The following donors have supported the Prevent Cancer Foundation® with in-kind gifts and services during the year.

## INDIVIDUALS

H.E., the Ambassador of Azerbaijan,  
Elin Suleymanov, and  
Mrs. Lala Surat  
H.E., the Ambassador of Greece,  
Haris Lalacos, and  
Mrs. Anna Michalopolou  
H.E., the Ambassador of Hungary, Dr.  
László Szabó, and  
Dr. Ivonn Sveverényi  
H.E., the Ambassador of Ireland,  
Daniel Mulhall, and  
Mrs. Greta Mulhall  
H.E., the Ambassador of Mexico,  
Gerónimo Gutiérrez, and  
Ms. Irasema Infante Barbosa  
H.E., the Ambassador of Portugal,  
Domingos Fezas Vital, and  
Mrs. Isabel Vital  
H.E., the Ambassador of Singapore,  
Ashok Mirpuri, and  
Mrs. Gouri Mirpuri  
H.E., the Ambassador of Switzerland,  
Martin Dahinden, and Mrs. Anita  
Dahinden  
Mr. and Mrs. Bruce Allen

Ms. Catherine Bennett and  
Mr. Fred Frailey  
Mr. and Mrs. Alejandro Escovedo  
Mr. and Mrs. Peter J. FitzGerald  
Mr. and Mrs. Craig Fuller  
Dr. Kristi Funk  
Mr. and Mrs. Bruce A. Gates  
Ms. Perry Guy  
Mr. and Mrs. Joel Jankowsky  
Dr. Ann Kulze  
Ms. Deborah Lowham  
Mr. and Mrs. Gary R. Lytle  
Mr. and Mrs. William F. Magner III  
Mr. Frank Mermoud and  
Mr. Ned Shannon  
Mr. Michael Meyer  
Mr. Renato Miracco  
The Honorable Pat Roberts  
Mr. David Tuter  
Ms. Laurie Williams

## ORGANIZATIONS

Affordable Signs  
Alton Lane  
Arena Stage  
Athena Water  
Blank Label  
Caesars Entertainment  
College Hunks of NOVA  
DCanter – A Wine Boutique  
Design Cuisine  
The Dylan Amsterdam  
Ermenegildo Zegna  
Everyman Theatre  
Fendi  
Ferrari of Washington  
Flywheel Sports  
Ford's Theatre  
Giant  
The Hamilton DC  
Hermès of Paris  
Hilton McLean Tysons Corner  
Honest Tea  
The Hour  
I Ricchi  
Irene Abdou Photography

The Jane Goodall Institute  
John Rutledge House Inn  
Lovington Winery  
Marriott Renaissance Harborplace  
Hotel  
Mindy Lam Couture  
Montana Winery  
New Tang Dynasty  
Obelisk DC  
Occasions Caterers  
Old Oak Cellars  
Outside the Lines Pet Photography  
Paradigm Event Management  
PUNI Distillery  
Radiance  
Regione Piemonte  
Renato Miracco  
Reston Limousine  
Ristorante Tosca  
Save the Date, LLC  
Shakespeare Theatre  
Singing Sands Inn  
Southwest Airlines  
The St. Gregory Hotel DC  
Station 4 DC  
Subway  
Thomas D. Mangelsen Gallery  
Toscana Saporita Cooking School  
Total Wine & More  
The W Hotel DC  
Warner Theatre  
Washington Ballet  
Washington Kastles  
Wegmans  
Wells Fargo



## STATEMENT OF FINANCIAL POSITION FOR THE YEAR ENDING JUNE 30, 2018

### ASSETS

#### CURRENT ASSETS

Cash and Cash Equivalents	1,330,542
Accounts and Pledges Receivable	178,832
	<u>1,509,374</u>

#### INVESTMENTS

General	4,443,585
Donor Restricted and Board Designated Funds	6,693,016
	<u>11,136,601</u>

#### PROPERTY

Office Furniture and Equipment	204,940
Accumulated Depreciation	(106,090)

#### TOTAL PROPERTY ASSETS

98,850

#### OTHER ASSETS

Prepaid Expenses	78,007
Deposits	22,636
Charitable Gift Annuities	184,335
Interest in Remainder Trusts	316,308
Deferred Compensation Plan	276,038
	<u>877,324</u>

#### TOTAL ORGANIZATION ASSETS

13,622,149

### LIABILITIES

#### CURRENT LIABILITIES

Accounts Payable and Accrued Expenses	132,211
Deferred Income	-
Grants Payable	886,373
	<u>1,018,584</u>

#### LONG-TERM LIABILITIES

Deferred Rent	67,093
Charitable Gift Annuities	55,011
Deferred Compensation	276,038
	<u>398,142</u>

#### TOTAL LIABILITIES

1,416,726

#### NET ASSETS

Unrestricted	10,377,135
Temporarily Restricted	1,549,875
Permanently Restricted	278,413
	<u>12,205,423</u>

#### TOTAL LIABILITIES AND

#### NET ASSETS

13,622,149

## STATEMENT OF ACTIVITIES AND CHANGES IN NET ASSETS

### SUPPORT AND REVENUE

Contributions	2,307,955
Bequests and Other Income	390,952
Investment Income	533,497
In-kind Contributions	172,812
Special Events	4,471,305
Less: Costs of Direct Benefit to Donors	(290,437)

#### TOTAL SUPPORT AND REVENUE

7,586,084

### EXPENSES

Program	
Research	1,336,271
Eduaction and Public Awareness	2,753,072
Community Outreach	1,115,900
Management and General	660,597
Fundraising	1,176,687

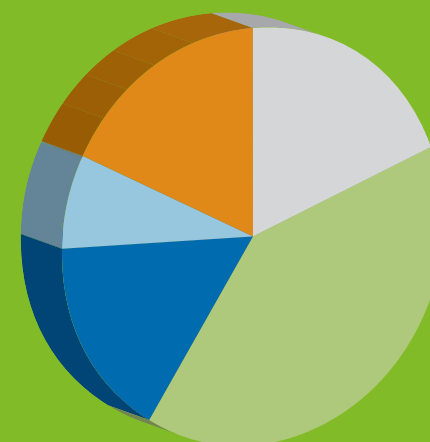
#### TOTAL EXPENSES

7,042,527

Change in Net Assets	543,557
Net Assets, Beginning of Fiscal Year	11,661,866

#### NET ASSETS, END OF YEAR

12,205,423



### Expenses by percentage

- 39% Education and Public Awareness
- 19% Research
- 17% Fundraising
- 16% Community Outreach
- 9% Management and General

*A charity you can trust!*



1600 Duke Street, Suite 500 | Alexandria, VA 22314  
Phone: 703.836.4412 | Fax: 703.836.4413 | Toll-free: 800.227.2732

[www.preventcancer.org](http://www.preventcancer.org)