



Stop Cancer Before It Starts!®

■ 2019 ANNUAL REPORT ■



Stop Cancer Before It Starts!®

SENIOR STAFF

Carolyn R. Aldigé
Founder and CEO

Jody Hoyos
Senior Vice President

Karen Peterson, Ph.D.
Vice President, Programs

Lisa Berry Edwards
Managing Director, External Affairs

Lisa M. McGovern
Executive Director, Congressional Families
Cancer Prevention Program®

Amy Sokal
Managing Director, Finance and Administration

Janet Hudson
Managing Director, Development

Erica Childs Warner
Senior Director, Evaluation and Outreach

2	BOARD OF DIRECTORS
3	LETTER FROM THE CEO AND BOARD CHAIR
4	WHO WE ARE: Grantor, Convener, Educator, Innovator
6	GRANTOR
	Research Results
	Current Research Grants
	UICC Technical Fellowships
	Community Grants
14	CONVENER
	Advocacy
	Dialogue For Action®
	Congressional Families Cancer Prevention Program®
	Quantitative Imaging Workshop
19	EDUCATOR
	Think About the Link®
	Breast Health Education for Young Women
	¡Celebremos La Vida! (Let's Celebrate Life!)
	Super Colon
	Too Young For This Sh*t
24	INNOVATOR
	Awesome Games Done Quick
	Technology In Cancer Screening
26	SIGNATURE EVENTS
	Annual Spring Gala
	Health Fair and 5k Walk/Run
29	FOUNDATION IN THE NEWS
30	SUPPORT
	Donor Spotlights
	Ways to Give
	Honor Roll of Donors
46	MEDICAL ADVISORY BOARD AND SCIENTIFIC REVIEW PANEL
48	FINANCIAL STATEMENT



Stop Cancer Before It Starts!®

The Prevent Cancer Foundation® is one of the nation's leading voluntary health organizations and the only U.S. nonprofit organization focused solely on cancer prevention and early detection. Founded in 1985, it has catapulted cancer prevention to prominence and fulfills its mission through research, education, outreach and advocacy.

Board of Directors



Carolyn R. Aldigé
Founder and CEO



Gary R. Lytle
Chairman



Joann Piccolo
Vice-Chairman



James L. Mulshine, M.D.
Vice-Chairman,
Scientific Director



Jeremy Hardy
FitzGerald
Secretary



Paul Phaneuf
Treasurer



Diane Casey Landry



Ron Christie



The Hon. Victor Fazio



Drew Figdor



Joxel Garcia, M.D.



Charles S. Houser



Joel Jankowsky



Mia Spiker Johnson



Shabnam Kazmi



Peter Levin, Ph.D.



William Wagner



Scott McIntyre



Lynne O'Brien



Hollyn Schuemann



Brian Shure



Pawan Singh



Jason Van Pelt

Sustaining Directors

Betty Alewine
Michael F. Brewer
Karen D. Fuller*
Joyce H. Gates
Lilibet Hagel
Gordon (Don) Hutchins
Brock Landry
Marcelle Leahy
Jean Perin
Andrea Roane
George Swygert
David Tintera
Margaret Vanderhye
Virginia A. Weil

Emeritus Directors

David S. Alberts, M.D.
Catherine P. Bennett
Margaret Bush
Marcia Myers Carlucci
Elmer E. Huerta, M.D., MPH
Alexine Clement Jackson

Founding Directors

Alan P. Dye
Harold M. Keshishian*

*Deceased

Dear Friends,

As we look back on the past year, it is our honor and pleasure to take this time to say thank you.

Thank you for your dedication to creating a world where cancer is not only treated, but is oftentimes prevented. Your commitment to our mission of saving lives across all populations through cancer prevention and early detection is reflected in the time and financial resources you invest in the Prevent Cancer Foundation® each year.

Thank you for your trust. We know that there are many worthy charities to support and that you value where and how your contributions are spent. Thank you for trusting us to fund high-risk, high-reward research, educate the public in new and innovative ways, reach out to our most vulnerable and underserved communities, and advocate for laws that support cancer prevention and early detection access and funding.

Thank you for your sharing your stories. We have both been deeply and personally affected by cancer through the loss of a close family member—and we know many of you have experienced this same loss. Thank you for sharing your stories with us to remind us each day why the work we do together is so important.

And thank you for believing in our vision to *Stop Cancer Before It Starts!*®

Sincerely,

Carolyn R. Aldigé
Carolyn R. Aldigé
Founder and CEO

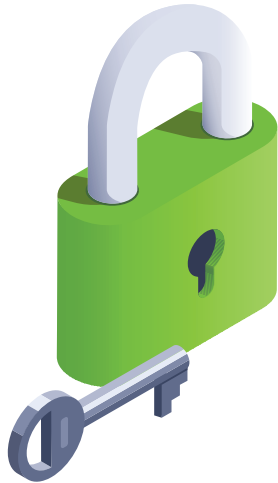
Gary R. Lytle
Gary R. Lytle
Chairman of the Board



Who We Are

Grantor, Convener, Educator, Innovator

The Prevent Cancer Foundation® has four primary identities that support our mission of saving lives across all populations through cancer prevention and early detection.



GRANTOR

- >> Funds early-career scientists and high-risk, high-reward research
- >> Builds an international network of scientists who share cancer prevention and early detection science and knowledge
- >> Supports community programs focused on cancer screening and prevention

CONVENER

- >> Brings together experts from science, academia and non-profit sectors to share knowledge
- >> Influences leaders in the U.S. to promote laws and funding that prioritize prevention and support the needs of cancer patients and their families
- >> Organizes symposia, roundtables and other events to address emerging issues related to cancer prevention and early detection

EDUCATOR

- >> Creates, distributes and publicizes important, lifesaving information regarding cancer prevention and early detection
- >> Curates and disseminates information to at-risk audiences
- >> Serves as a trusted advisor to underserved communities

INNOVATOR

- >> Provides seed money for breakthrough research and innovation
- >> Supports new, unique and bold efforts to spread cancer prevention and early detection information and raise funds to support lifesaving programs and projects



Stop Cancer Before It Starts!®



Grantor

Research Results

Dr. Andrew Dannenberg

The Prevent Cancer Foundation® is committed to making the most of your support by funding high-risk, high-reward research in cancer prevention and early detection. The Foundation began funding Dr. Andrew Dannenberg when he was an early-career scientist and has continued to support his work. In 2015, you helped fund Dr. Dannenberg with a two-year award to validate a blood-based biomarker of fatty tissue inflammation, which might lead to a blood test to identify patients with an increased risk of cancer. It might also be used to assess the effectiveness of interventions aimed at reversing the harmful effects of fatty tissue inflammation to prevent cancer.

Thank you for helping to fund researchers like Dr. Dannenberg, who just might find the next big breakthrough in cancer screening or prevention.

“Doing research is very expensive. The federal government funds roughly one in ten grants, sometimes less. That means that an awful lot of excellent research is going unfunded. That’s why supporters of the Prevent Cancer Foundation are so critical in stopping cancer before it starts.”

– Dr. Andrew Dannenberg





“Lung cancer is a terrible disease that affects so many people, so I feel an immense sense of urgency to find ways to reduce lung cancer death. The support of the Prevent Cancer Foundation is enabling me to take on an ambitious project to sequence the genomes of lung [cancers] from women that never smoked.”

- Dr. Alice Berger

Grantor

Current Research Grants

With your help, the Prevent Cancer Foundation® supports research grants & fellowships for cancer prevention and early detection.

The application process is competitive and proposals are assessed through an external peer review. Our focus is on early-career researchers and high-risk, high-reward projects.



Grantee: Alice Berger, Ph.D.

Named Award: Devereaux Outstanding Young Investigator

Institution: Fred Hutchinson Cancer Research Center, Seattle, WA

Project Title: Understanding The Etiology of Lung Cancer in Never-Smokers

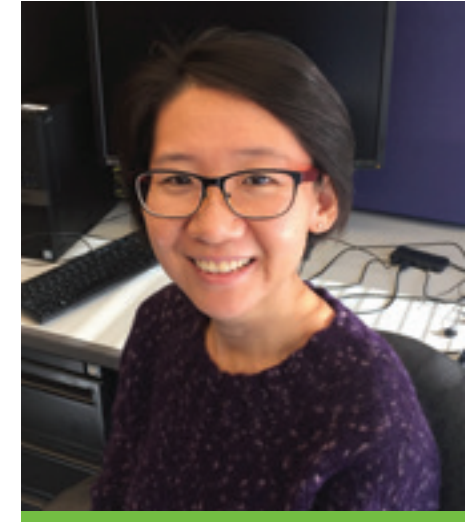


Grantee: Andrea Branch, Ph.D.

Named Award: The Shure Family Charitable Foundation

Institution: Icahn School of Medicine at Mount Sinai, New York, NY

Project Title: Reversing Drivers of Liver Cancer: Focus on Inflammation and Repair



Fellow: Cheng Peng, Sc.D.

Named Award: Awesome Games Done Quick

Institution: Brigham and Women's Hospital, Boston, MA

Project Title: Dietary Prevention of Breast Cancer Among High-Risk Individuals





Fellow: Heini Natri, Ph.D.

Named Award: Marcia and Frank Carlucci Charitable Foundation

Institution: Arizona State University Foundation for a New American University, Tempe, AZ

Project Title: Sex-Specific Genetic Mechanisms Underlying Cancer Susceptibility

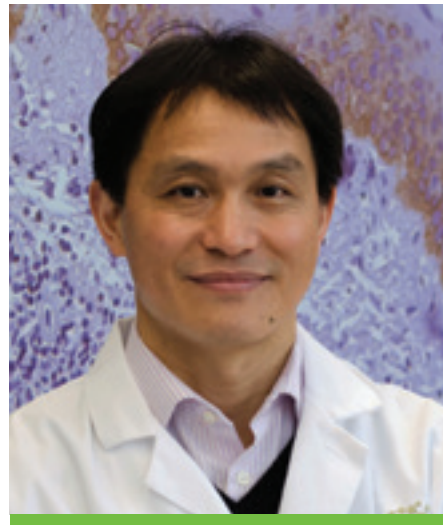


Grantee: John McDonald, Ph.D.

Named Award: Michele and Drew Figdor Award

Institution: Georgia Institute of Technology, Atlanta, GA

Project Title: Noninvasive Test for the Detection of Type I and Type II Ovarian Cancer



Grantee: Liang Liu, Ph.D.

Named Award: Awesome Games Done Quick

Institution: University of Minnesota, Austin, MN

Project Title: A Novel UV Signature for Assessing Skin UV Damage and Cancer Risk



Grantee: Darren Mays, Ph.D.

Named Award: The Sanford Figdor Award in Melanoma Research

Institution: Georgetown University, Washington, D.C.

Project Title: A Mobile Text Messaging Intervention for Indoor Tanning Addiction



Grantor

UICC Technical Fellowships

The Prevent Cancer Foundation® has again partnered with the Union for International Cancer Control (UICC) to fund Technical Fellowships, which promote the rapid transfer of knowledge and innovative technology in cancer prevention and early detection. Most awarded fellows are focused on advancing cancer prevention and early detection in low- and middle-income countries.



Ms. Oumou Souley mou Boukari
Laboratory of Anatomy and Pathological Cytology of the Departmental Hospital of Borgou; Benin
Host institution: Laboratory of Cancer Surveillance; Algeria



Dr. Sabiha Bouzbid
University Hospital Center of Annaba; Algeria
Host institution: Association for the Screening of Cancers in the Rhone; France



Dr. Naveen Khargekar
Homi Bhabha Cancer Hospital; India
Host institution: National Cancer Institute, Division of Cancer Epidemiology and Genetics, National Institutes of Health; United States



Dr. Kunal Oswal
Tata Education Development Trusts; India
Host institution: International Agency for Research on Cancer (IARC); France



Ms. Florence Manjuh
Cameroon Baptist Convention Health Services; Cameroon
Host institution: Information and Research Center, King Hussein Foundation; Jordan



Mr. Mbiydzennyuy Ferdinant Sonyuy
Cameroon Baptist Convention Health Services; Cameroon
Host institution: Information and Research Center - King Hussein Foundation; Jordan



Dr. Pamela Armela Gwladys Moussavou Boundzanga
International Medical Research Center of Franceville; Gabon
Host institution: Nuclear Organization and Oncogenesis Unit; France

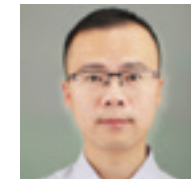


Dr. Akhilanand Chaurasia
King George's Medical University; India
Host institution: Guy's, King's and St Thomas School of Medicine and Dentistry; United Kingdom



Ms. Srabani Mittal*
Cancer Foundation of India; India
Host institution: International Agency for Research on Cancer, France

*Deceased



Dr. Rongshou Zheng
National Central Cancer Registry; China
Host institution: International Agency for Research on Cancer (IARC); France

Grantor

Community Grants

Thanks to your contributions, the Prevent Cancer Foundation® is proud to support 10 community-level projects focused on increasing cancer prevention and early detection. These projects were selected through a highly competitive review process, and each program received a one-year, \$25,000 grant.

Since 2007, you have helped the Foundation award nearly \$2 million in community grants in 31 states, as well as in American Samoa and to the Washoe Tribe.

2019 COMMUNITY GRANTEES

African Services Committee New York, NY

Viral hepatitis education, screening and vaccination to prevent liver cancer

Alliance Community Services Salt Lake City, UT

Breast cancer screening, patient navigation and education for Hispanic women

Esperanza Health Centers Chicago, IL

Culturally sensitive and language-appropriate breast health education, mammography and care coordination

Friends of Mercy Foundation Bakersfield, CA

Bilingual breast cancer education and awareness

Health Care for the Homeless Baltimore, MD

Better access to colorectal and cervical cancer screenings for homeless population

Kokua Kalihi Valley Comprehensive Family Services Honolulu, HI

Hepatitis B screening and immunizations during perinatal care to prevent liver cancer

Nueva Vida Towson, MD

Breast, cervical and colorectal cancer education, screening and navigation for uninsured Latino immigrants

University of New Mexico Albuquerque, NM

Breast health education, patient navigation and follow-up for Latina women

Vietnamese American Cancer Foundation Fountain Valley, CA

Culturally sensitive and language-appropriate outreach, education and early detection and treatment services for hepatitis B and C in the Vietnamese American community

Virginia Harm Reduction Coalition Roanoke, VA

Peer-based, mobile outreach for hepatitis C testing to prevent liver cancer in the Appalachian region of southwestern Virginia



**Impact:
Michigan**
(2018-2019
Community
Grant projects)

538 patients screened for lung cancer with low-dose CT scans through McLaren Northern Michigan Foundation grant project

265 mammograms and 172 tomosynthesis exams provided to underserved community members through Spectrum Health Foundation grant project

1,128 community members reached with education about cancer screening through Northwest Michigan Health Services, Inc. grant project



Convener

Advocacy

The advocacy and policy program seeks to increase access to quality health care, reduce barriers to individual health and wellness and ensure adequate funding for cancer prevention and early detection research and programs.

New and improved Advocacy Toolkit

The new edition of the Advocacy Toolkit is a resource to help you engage with your elected officials. The streamlined content provides simple, concise messaging so advocating for change with your senators and representatives is as easy as possible.



Download: preventcancer.org/advocacy/toolkit

Here are some of the issues we focused on this year:

Electronic and combustible cigarettes

The Foundation engaged with other patient advocacy organizations to call for Congress and the Food and Drug Administration (FDA) to limit the sale and accessibility of e-cigarettes to children and teens, and has supported measures to increase the smoking age for combustible cigarettes to 21.

Prevention and Public Health Fund

The Prevention and Public Health Fund (PPHF) is routinely used to divert resources to other federal programs. Fortunately, Senator Richard Blumenthal (D-CT) and Representative Doris Matsui (D-CA) introduced the *Public Health Funding Restoration Act*, which reaffirms the need for

prevention and public health programs and restores its full original funding. The Prevention and Public Health Fund saves lives, and we will continue to fight to protect it.

Colorectal cancer screening

The Foundation joined other patient advocacy organizations in support of the *Removing Barriers to Colorectal Cancer Screening Act* (H.R. 1570 in the House and S. 668 in the Senate). This important legislation would eliminate the coinsurance requirement for Medicare patients who have polyps or abnormal tissue removed during a colonoscopy.

Make your voice heard

Sign up for advocacy news action alerts at preventcancer.org/advocacy/take-action/#/signup/go

Advocacy Workshop: Economic Factors and Their Impact on Prevention

The Foundation hosted its annual Advocacy Workshop, focusing on access barriers and the economic impact of preventive services.

Keynote speaker **Sharon Y. Eubanks**, Lead Counsel in the landmark tobacco case *United States vs. Phillip Morris USA*, gave participants insight into how the case was developed and the legal conclusions that happened as a result.

“It may seem crazy, but we had to prove that smoking caused cancer,” she said.

Eubanks also discussed the current landscape of tobacco use in the U.S.—including movement on e-cigarettes and menthol cigarettes. “This is history. It will repeat itself. Be aware of it,” she said.

Following Eubanks’ address, attendees heard a panel on access barriers in care delivery with **Lindsay Houff** of National Coalition for Cancer Survivorship, **Anna Hyde** of Arthritis Foundation and **Kristen Santiago** of LUNgevity, moderated by **Chad Ramsey** of Ovarian Cancer Research Alliance.

In the afternoon, there was a discussion on the economics of prevention with **Bruce Pyenson** of Milliman, Inc., facilitated by **Dr. Jim Mulshine** of Rush University Medical Center.



Pictured left to right: Chad Ramsey, Ovarian Cancer Research Alliance; Anna Hyde, Arthritis Foundation; Kristen Santiago, LUNgevity; Lindsay Houff, National Coalition for Cancer Survivorship.

Convener

Dialogue for Action®



2019 Dialogue for Action® on Cancer Screening and Prevention

The 21st annual Dialogue for Action® conference convened a diverse and committed audience, representing 39 states, 7 American Indian/Alaska Native tribes and organizations, the District of Columbia and Brazil. The conference covered issues related to mandated cancer screenings driven by guidelines for colorectal, cervical, breast and lung cancers, as well as and other cancer screenings and evidence-based cancer prevention strategies.

Participants of the conference had overwhelmingly positive responses to the conference:

- >> Over 96% reported they were very satisfied or satisfied with the 2019 conference.
- >> Over 79% said their top reason for attending the Dialogue was to get the information on current trends, innovations and updates on this subject.
- >> Over 57% intend to implement change at their workplaces or in their communities as a result of attending the conference.

The Dialogue conference specifically focused on underserved populations through nine presentations and break-out groups directly addressing challenges and solutions for greater inclusion in cancer screening and prevention of American Indians/Alaska Natives, African Americans, Asian Americans and rural populations. There was also an exploration of the relationship between technology and disparities.



Mitch Zeller, J.D., Center for Tobacco Products, Food and Drug Administration (FDA), discusses the FDA's comprehensive approach to tobacco and nicotine.

Convener

Congressional Families Cancer Prevention Program®

The Prevent Cancer Foundation® convenes a bipartisan network of spouses of members of the House, Senate, Administration, Supreme Court and diplomatic community who share your interest in saving lives through cancer prevention and early detection.



**CONGRESSIONAL FAMILIES
CANCER PREVENTION PROGRAM®**
of the Prevent Cancer Foundation®



ACTION FOR CANCER AWARENESS AWARDS

This annual awards luncheon honors congressional spouses, journalists and other advocates for using their respective platforms to educate the public on cancer prevention and early detection.

A bipartisan, bicameral audience of congressional members and spouses, as well as leaders in the cancer community, joined to celebrate the 2018 honorees.

CONGRESSIONAL FAMILIES LEADERSHIP AWARD

Helen Green, spouse of Rep. Gene Green (TX)
Kasey Crowley, spouse of Rep. Joe Crowley (NY)

DISTINGUISHED SERVICE IN JOURNALISM

Norah O'Donnell, "CBS This Morning"
Represented by her parents, Dr. Frank and Mrs. Norah O'Donnell

EXCELLENCE IN CANCER AWARENESS

Phil Kessel, NHL hockey player

Convener

Quantitative Imaging Workshop

Quantitative Imaging Workshop XV: Lung Cancer, COPD and Cardiovascular Disease - Quality is a Gateway to Deep Learning

At the 15th annual Quantitative Imaging Workshop (QIW), leading experts in lung cancer, COPD and cardiovascular disease explored how a revolution in biomedical imaging can be leveraged to improve outcomes in managing early lung cancer.

GOAL

To introduce robust approaches that allow the measurement of the volume (volumetric analysis) of pulmonary nodules over time, as this has been shown to be an accurate way to select which pulmonary nodules are appropriate for diagnostic work-up due to a higher probability of being early lung cancers.

PROGRESS

Lung cancer screening adoption is slow but rising. Progress with the efficiency and safety of early lung cancer management has been remarkable. Speakers discussed the 10-year follow-up for the major Dutch/Belgian Lung Cancer Screening study (NELSON Trial), which showed an overall lung cancer mortality reduction benefit of 26% in men and up to 61% at 8-years in women.

James Mulshine, M.D., moderates a panel on the value of quantitative chest imaging, which includes (L to R) Andrea McKee, M.D., Lahey Hospital and Medical Center; Anita McGlothlin, Lung Cancer Alliance; Robert J. Nordstrom, Ph.D., National Cancer Institute; Bruce Pyenson, FSA, MAAA, Milliman, Inc.; Albert Rizzo, M.D., FACP, FACC, American Lung Association

CHALLENGE

The most efficient screening results have been reported with groups that use volumetric analysis to select large pulmonary nodules for diagnostic work-up of invasive lung cancer. However, a validated tool to assess nodule volume in regular clinic settings is not yet available. New commercial imaging tools to assist radiologists in reliably detecting all lung cancer nodules are also just emerging onto the market. This should increase the productivity of radiologists as more people seek lung cancer screening.

RESULTS

As a result of the groundwork done at the Workshop, the Food and Drug Administration (FDA) has developed new regulatory processes for evaluation of imaging devices, software and imaging biomarkers for safety and effectiveness.



Educator

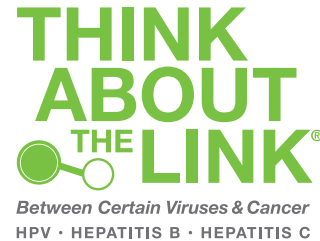
Think About The Link®

In 2015, the Prevent Cancer Foundation® commissioned a survey to study the landscape of certain viruses—human papillomavirus (HPV), hepatitis B and hepatitis C—that can lead to cancer.

As a result of those findings, we launched *Think About the Link®* to spread the message about how to protect yourself against these viruses and prevent cancer.

Nearly four years later, we took a look at how the Foundation has helped to move the needle on getting vaccinated, tested and treated to *Stop Cancer Before It Starts!®*

This is great progress, but we aren't done yet! Join us by telling your friends, families, and co-workers to Think About the Link® between certain viruses and cancer.



HPV is linked to cervical, anal, penile, vulvar, vaginal and oropharyngeal (back of throat) cancers.

- >> 15% increase in parents who have had their children vaccinated against HPV
- >> 8% increase in health care professionals who recommend the HPV vaccine to all their patients

Hepatitis B is a leading cause of liver cancer.

- >> 5% increase in Asian patients (who are at increased risk of hepatitis B) who have been vaccinated
- >> 7% increase in health care professionals who recommend the hepatitis B vaccine to all their patients

Hepatitis C is a leading cause of liver cancer.

- >> 8% increase in health care professionals with hepatitis C patients who say their patients ultimately received treatment
- >> 8% increase in health care professionals who indicate their baby boomer patients are aware they are at increased risk of cancer caused by hepatitis C

Educator

Breast Health Education for Young Women: Facilitator's Guide

This Guide is a user-friendly educational tool to increase young women's knowledge about breast health. It is available free of charge in English and Spanish.



To date, the Guide has been downloaded in all 50 U.S. states, the District of Columbia, five U.S. territories and 47 other countries.

This year, there were nearly 200 downloads of the Guide in more than 20 countries.

The Guide has been used in places like:

- >> The Maplewood Housing for the Visually Impaired in Illinois
- >> The Iowa State University Extension and Outreach
- >> Sistaah Talk, Inc. in Florida
- >> The Civil Society for Cancer Eradication in Nigeria

Educator

¡Celebremos la Vida! (Let's Celebrate Life!)

This longstanding program developed and supported by the Prevent Cancer Foundation® partners with three clinics to provide education and breast and cervical cancer screening to Hispanic women.

This year, with your help, we provided:

441 Pap tests

758 Mammograms

946 Educational group sessions for women

PLUS

Patient navigation through medical follow-up and treatment for

363 women



Educator

Super Colon

Where in the world is the Prevent Cancer Super Colon®?

For nearly 15 years, visitors to the Super Colon have explored this interactive education tool to learn about healthy colon tissue, tissue with non-malignant colorectal disease, colorectal polyps and various stages of colorectal cancer.

Here are some highlights of the Super Colon's past year:

Washington, District of Columbia

The Super Colon took part in Art All Night DC, an all-night art festival attended by more than 50,000 people.



Gray, Tennessee

The Super Colon participated in a two-day “pop-up” clinic for hard-to-reach, underserved populations in Appalachia.

Bay Mills, Michigan

The Inter-Tribal Council of Michigan, Inc. invited the Super Colon to the Cancer Awareness Health Fair to raise awareness and provide education for the American Indian population.

Kalispell, Montana

“Spring into Safety Kids Day” featured the Super Colon, which was visited by nearly 250 parents and grandparents.

Petoskey, Michigan

The Super Colon was part of the 12th annual health fair and pow wow at the Mina Mskiki Gumik Little Traverse Bay Bands Health Center.

Chelan, Washington

The Super Colon was featured at the Prevention Fair hosted by Lake Chelan Community Hospital at the Chelan Fire Department.

Educator

Too Young For This Sh*t

Most people think that colorectal cancer affects only older adults—but today, new cases of colorectal cancer are on the rise in younger people, and younger patients are more likely to be diagnosed at later stages than older patients.

People under 50 who are diagnosed with colorectal cancer are more likely to:

- >> Be diagnosed at a later stage
- >> Have to see two or more doctors before getting diagnosed
- >> Have a family history of colorectal cancer

The Prevent Cancer Foundation® wants you to educate yourself about colorectal cancer prevention and early detection, and the signs and symptoms of the disease—even if you think you're too young for this sh*t.

Learn more at

www.tooyoungforthis.org.

HAVEN'T GONE IN DAYS?

You may think you're **too young for this sh*t**, but colorectal cancer is on the rise in younger adults.

tooyoungforthis.org preventcancer®

RUNNING TO THE BATHROOM MULTIPLE TIMES A DAY?

You may think you're **too young for this sh*t**, but colorectal cancer is on the rise in younger adults.

tooyoungforthis.org preventcancer®

TURNING 45 THIS YEAR?

You may think you're **too young for this sh*t**, but colorectal cancer is on the rise in younger adults.

tooyoungforthis.org preventcancer®

BLOOD IN YOUR SH*T?

You may think you're **too young for this sh*t**, but colorectal cancer is on the rise in younger adults.

tooyoungforthis.org preventcancer®

Innovator

Awesome Games Done Quick

When others said “no,” the Prevent Cancer Foundation® said “yes!”

As a result, we’ve been proud to partner with Awesome Games Done Quick for more than a decade. This annual “speedrunning” video game marathon was the first of its kind and has given rise to a new category of fundraising for nonprofits.

In the late hours of the 2019 marathon, Twitch users started a donation train, calling for everyone to donate \$5 at once. Your momentum paid off—donations flooded in, pushing the fundraising total from \$1.86 million past the \$2 million mark in a matter of minutes.

After 160 hours, the event wrapped up with a whopping \$2.4 million raised for the Prevent Cancer Foundation®. To date, Awesome Games Done Quick has raised more than \$11.3 million to fund research, technology transfer and community grants in the U.S. and internationally, and cancer prevention and early detection education and outreach.

With innovation and hard work, this is what we can do together.



“The support of the Prevent Cancer Foundation and Awesome Games Done Quick has allowed me to redirect my career and incorporate implementation science in our cancer prevention and control toolkit. I believe the Foundation’s support will play a significant role in the development of effective, locally-tailored colorectal cancer screening programs in Mexico.”

- Dr. Martin Lajous, National Institute of Public Health of Mexico

Innovator

Technology in Cancer Screening



Dr. Lekan Olasehinde (right) attended an iBreastExam workshop in Kenya, and then trained community nurses in Nigeria on how to use the device.

Mammograms can be hard to come by in remote areas, due to expense, a lack of basic resources (like electricity) or a dearth of radiologists. The implications of this portable, battery-powered device for breast cancer early detection are significant, and it's all thanks to you.

In Nigeria, a nurse holds a small device and prepares her patient for breast cancer screening.

This is the iBreastExam, a handheld, radiation-free breast cancer screening device that enables health care providers to check for small lumps that could be early signs of breast cancer. Mammograms can be hard to come by in remote areas, due to expense, a lack of basic resources (like electricity) or a dearth of radiologists.

The implications of this portable, battery-powered device for breast cancer early detection are significant, and it's all thanks to you. With your support, the Prevent Cancer Foundation® is funding a clinical trial led by Dr. Victoria Mango of Memorial Sloan Kettering Cancer Center. The trial is training community nurses in Nigeria to test the iBreastExam tool in low-resource settings.

Our hope is that this device will increase access to breast cancer early detection in areas where it is difficult to get a mammogram or other type of breast cancer screening. The iBreastExam is already in use in Asia, Mexico and Africa, and is rolling out in certain U.S. cities.

With innovations like this—and with your support—we can continue to turn the tide on cancer prevention and early detection.

Signature Events

Annual Spring Gala



The Prevent Cancer Foundation® hosted its 25th Annual Spring Gala on May 9, 2019, at the National Building Museum.

SALUTED

Switzerland; its Ambassador, His Excellency, Martin Dahinden and Mrs. Anita Dahinden served as honorary patrons of the event, which had the theme “Switzerland: Postcard Perfect.”



HONORED

Senators Bill Cassidy and Mazie Hirono were honored as the 2019 Cancer Champions.

DESIGNED

Gala décor was personally designed by weddings and celebrations expert David Tuter, who is a member of the Foundation’s Board.





RAISED

\$1.5 million to *Stop Cancer Before It Starts!*®

“Anyone who has experienced this type of news knows very well how painful and overwhelming it can be for the person and for the family. We stood by her side the entire time, through the mastectomy, six cycles of chemo, 36 cycles of radiation and lots of health education.”

— Dorys Lizama and Carmela Miglionico
on serving patients through the Foundation’s
breast and cervical cancer screening program



Signature Events

Prevent Cancer Health Fair and 5k Walk/Run ... by the numbers

“...events like the 5K and organizations like the Prevent Cancer Foundation that give me hope that someday others won’t have to go through the battle we have.”

— Emma Jacques



10

The number of years this event has been taking place

30

The number of health and fitness partners who offered free services, healthy snacks, health screenings and more

7' 7"

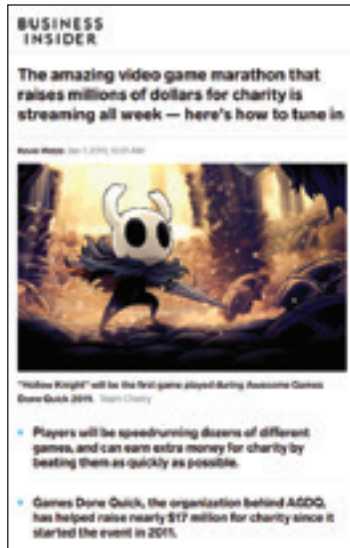
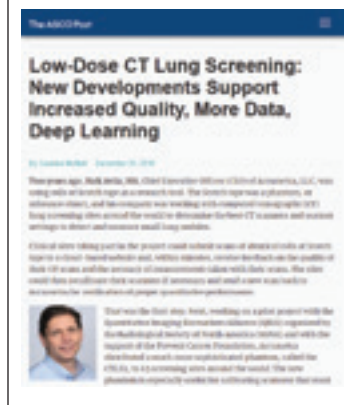
The height of honorary chair Gheorghe Mureșan, former player for the Washington Bullets (now Washington Wizards) and the tallest player in NBA history

\$200,000

Record amount raised for lifesaving cancer prevention and early detection programs



Foundation in the News



Support

Donor Spotlights



Mark Leoncyk

“Since I started streaming back in December of 2017, I’ve always had the idea of doing some sort of charity event. They always seemed fun, but it wasn’t until [my cousin] Steven’s cancer got worse that I fully realized that I needed to. The three-day marathon came to a close around 4 a.m., with more than \$5,500 raised for the Prevent Cancer Foundation. I couldn’t believe it.

At one point during the planning, I thought \$500 would be a good goal. Then when we set it to \$1,000, I thought, ‘Nah, that’s too high. We’re not reaching that.’ The generosity people have within the gaming community is absolutely insane.”

— Mark Leoncyk



Shabnam Kazmi

“At 15, I lost my best friend to cervical cancer. Now, the Prevent Cancer Foundation strives to prevent such tragic loss through programs like Think About the Link, which emphasizes screening for and vaccinating against HPV. This virus is the cause of most cervical cancer cases. I am deeply grateful to be able to support the Foundation in saving precious lives through research, education, outreach and advocacy. Please join us in this mission.”

– Shabnam Kazmi

“...the Prevent Cancer Foundation strives to prevent such tragic loss through programs like Think About the Link, which emphasizes screening for and vaccinating against HPV.”

Support

Donor Spotlights

Emma Jacques

“My husband and I have been participating in the Prevent Cancer 5K Walk/Run for the past three years and plan on returning this year! The event means a lot to me because my dad has been battling kidney cancer since 2012 and was originally told by his doctors that he would be lucky to watch me graduate high school in 2016—the same year I attended my first 5k.

After multiple surgeries and treatments from a cancer trial, my dad is still here, and the cancer shows no signs of growth. For him to have been given a four-year prognosis and to have lived well beyond that is truly a miracle. These past seven years have been extremely stressful and full of heartache for my family, especially for my mom, since she lost her mother to breast cancer when she was 24. It's events like the 5K and organizations like the Prevent Cancer Foundation that give me hope that someday others won't have to go through the battle we have.”

— Emma Jacques



Tom Childs

“It came as more than a shock that my family and I could lose my wife, Ferne, after 55 years of marriage, in a five-week period. A rare bile duct cancer surfaced as Stage 4, and she never had a chance to fight.

After the death of my wife, my daughters said to me, ‘Dad, you need to find something to do.’ But my standards were high—I wanted to be able to do something that added value and would make a difference.

Working with the Prevent Cancer Foundation has given me the opportunity to raise money for research on the early detection of cancer and cancer prevention. The medical research is targeted to specific cancers on a grant basis to focus on expectations and accountability. The Foundation is one of the very few to do this.

Suddenly, I had the spirit and courage to approach anyone and tell them about my new venture. I could comfortably ask them to consider the Prevent Cancer Foundation as one of their choices in charitable donations—and my daughters were excited to see me back in the game.”

– Tom Childs



“Working with the Prevent Cancer Foundation has given me the opportunity to raise money for research on the early detection of cancer and cancer prevention. “

Support

Ways To Give



Only through your generosity can we fulfill our mission of saving lives across all populations through cancer prevention and early detection. Every donation makes a difference. Your support is invaluable, and we hope you continue contributing to the Foundation.

Here are some ways to support the Prevent Cancer Foundation® today:



- >> **Give monthly:** With less stress on your wallet, recurring gifts provide the Foundation with consistent and reliable funds to save lives.
- >> **Make a direct donation:** Every dollar you give furthers our vision and mission.
- >> **Celebrate a loved one:** Pay tribute in honor or in memory of someone dear to you by helping others.
- >> **Plan a gift:** There is still so much work to do. Support prevention and early detection for generations to come by including the Foundation in your will, trust or estate plans.
- >> **Give at Work:** Payroll deductions are a hassle-free way to give back. Donate to the Foundation through the combined federal campaign (#CFC 11074).

Support

2019 Donor Honor Roll

THE EDWARD PERRY RICHARDSON LEGACY SOCIETY

Edward Perry Richardson was the father of Carolyn R. Aldigé, founder and CEO of the Prevent Cancer Foundation®. His struggle against cancer inspired her to establish the organization and his memory has sustained Prevent Cancer's mission of saving lives across all populations through cancer prevention and early detection. Members of the *Edward Perry Richardson Legacy Society* are special friends of the Prevent Cancer Foundation® who have committed to ensuring the legacy of Prevent Cancer by naming it as a beneficiary in their will, charitable gift annuity, charitable trust, individual retirement account or life insurance policy, or have made a gift of real estate or tangible personal property.

LEGACY MEMBERS

Mr. Henry Acad*
Mr. and Mrs. James G. Aldigé III
Mrs. Betty C. Alewine
Mr. Dewey Vincent Allen*
Mrs. Florence Atkins*
Mr. Forrest R. Ayers*
Miss Helen U. Baker*
Ms. Margaret Bartel*
Mrs. Lee Lupher Bartruff*
Ms. Reba Cora Bean*

Mr. John A. Beaty*
Mr. Anton J. Befort*
Ms. Alice Elizabeth Behnke*
Ms. Ellen Behrens
Dr. Charles Bessey*
Ms. Elizabeth M. Beylon*
Ms. Elizabeth R. Black*
Mr. Rex A. Bohling*
Mr. and Mrs. Steve Borbas
Mrs. Anne R. Bord*
Ms. Lucille Bowman*
Mrs. Rosa Braun*
Mrs. Lucille Brents*
Ms. Artie Mae Brooks*
Ms. Jenny Brown*
Dr. Victoria Nicolau Busulegas*
Ms. Ettorina M. Cardella*
Ms. Ida T. Cavoli*
Ms. Victoria Conchie*
Mrs. Isabel H. Cosgrove*
Mrs. Jennie R. Craib*
Ms. Martha F. Cromley*
Mr. Richard L. Davies*
Mr. Marvin M. Davis*
Mrs. Idella Church Dean*
Mrs. Katharine S. DeLashmutt*
Ms. Eva Devecsery*
Miss Leslie C. Devereaux
Ms. Irene Diefenbach*
Mrs. Sally Dollinger*
Mrs. Virginia S. Doolittle*
Mrs. Myrtle F. Draffen*
Mrs. Sylvia N. Ehrlich*
Mr. Charles N. Eischen*
Mr. Jerome L. Ellenberg*

Miss Grace M. Elliott*
Ms. A. Irene Emswiler*
Mr. Paul Escalante*
Miss Mollie R. Evin*
Mr. Edward Joseph Fabish*
Ms. Barbara Falltrick*
Ms. Anita M. Farmer*
Ms. Claire Fearnside*
Ms. Teresa Felton*
Mr. Robert I. Fendrich*
Ms. Estelle Filomio*
Mr. and Mrs. Peter J. Fitzgerald, Sr.
Mr. Howard E. Foltz*
Mr. Jay B. Foote, Jr.*
Mr. Marion Frank*
Ms. Berta Mae Gallagher*
Ms. Helen M. Galvin*
Mr. Lewis T. Gardiner*
Mr. Harold N. Gilbert*
Mrs. Esther Glendinning*
Ms. Susan L. Goroll*
Ms. Patricia O. Greenwell*
Mr. James T. Grossmann
Mrs. Helen Hall*
Mr. Samuel D. Hall, Jr.*
Ms. Elizabeth Handley*
Mr. and Mrs. Van Buren Hansford*
Ms. J. Harriet Hanson*
Ms. Myrtle Hara*
Ms. Sarah A. Hayat*
Ms. Goldie Herrmann*
Mrs. Ruth Hoare*
Ms. Maria M. Hoemann*
Mrs. Deborah Houlihan
Mr. and Mrs. Charles S. Houser

Mrs. Alexine Clement Jackson
Ms. Stella Jacobs*
Ms. Elizabeth C. Jenne*
Ms. Elsie D. Johnson*
Ms. Hazel Johnson*
Mr. Nahum Joslyn*
Mrs. Leslie A. Karr
Mr. Joseph F. Kelly, Jr.
Ms. Rosemary Kelly*
Mrs. Lenora M. Kerschner*
Ms. Virginia Kintz*
Lt. Col.* and Mrs. William Konze*
Ms. Rose Koury*
Mrs. Harriet R. Kutik*
Mr. Emil G. Kramer*
Mr. Herbert Kramer*
Mrs. Phyllis Kroeger*
Ms. Lorraine D. Lader*
Ms. Carla Laemmle*
Mr. Brock R. Landry
Ms. Tirzah A. Lassahn*
Mr. Philip Lawrence*
Mrs. Floy Lehman*
Ms. Jennie C.C. Li*
Ms. Laurie D. Lima*
Mr. and Mrs. Hal Litzius*
Mr. and Mrs. Gary Lytle
Mr. Stanley L. Mackey*
Mr. Gordon L. Mann, Jr.*
Mr. Pasquale A. Maresco*
Mr. Benjamin Marks*
Ms. Blondie L. Marsh*
Ms. Anna Martinese*
Ms. Miriam H. Mason*
Mrs. Mary E. Mathis*

Ms. Barbara Mazur*
Mr. Norman S. McCallister*
Mrs. Virginia N. McConchie*
Mr. Robert Lee McGuire*
Mr. Robert F. McKinley*
Ms. Margaret F.L. McKnight*
Ms. Ezilda T. Michel*
Ms. Irene B. Miller*
Ms. Amy Mitchell*
Mr. and Mrs. Jon E. Mittelhauser
Ms. Diane M. Montini*
Ms. Mary Helen Moorhead*
Mr. Donald Moy*
Ms. Marabelle Nape*
Ms. Claire Nemser*
Mr. and Mrs. Donald R. Neubrecht*
Mrs. Elizabeth H. Newberry*
Mr. Bernard Niewoehner*
Mr. Harvey L. Panzer*
Mrs. Anna Papa*
Ms. Rose Pasternak*
Mrs. Catherine Bond Patterson*
Ms. Lonetta C. Patterson*
Mrs. Josephine Ann Perrella*
Ms. Patricia A. Peterson*
Ms. Sylvia Petters*
Mr. Richard J. Phillips*
Ms. Joann Piccolo and
Mr. Timothy Carmody
Mrs. Doreen L. Pietraszkiewicz*
Mr. John J. Pikulski*
Mrs. Myrtle Potter*
Mr. John Prigee*
Mrs. Nancy Gray Pyne
Mrs. Josephine Rich*
Ms. Joan L. Rochelle*

Mrs. Zelda B. Rockwell*
 Ms. Arlene Rosen*
 Mr. Richard T. Russell, Jr.*
 Mrs. Ida I. Schaefer*
 Dr. and Mrs. Daryl R. Schaller
 Mrs. Charlotte E. Schneider*
 Ms. Marian A. Schwab*
 Mr. Glenn E. Selix*
 Mrs. Theresa R. Shapiro*
 Ms. Eleanor Shelly*
 Mr. Alfred J. Shaw*
 Ms. Dorothy Singleton*
 Mr. Elias Skaaren*
 Mrs. Elizabeth Cornell Smith*
 Ms. Elvera W. Smith*
 Ms. Betty C. Stich*
 Ms. Claire Strub*
 Ms. Genevieve Suss*
 Ms. Mildred Swartzbaugh*
 Ms. Ruth Thayer*
 Mr. Overton Arnold Thompson*
 Mrs. Ione M. Uphoff*
 Mr. Nicholaas Van Riesen*
 Ms. Colleen Mae Veith*
 Dr. Jan P. Vette*
 Mr. Stanley Vomacka*
 Ms. Margaret Vorous
 Ms. Rose Helen Walker*
 Mrs. Margery L. Weil*
 Mr. Richard Weiss*
 Ms. Bertha Wempe*
 Ms. Sarah H. West*
 Mrs. Laura S. Williams
 Mrs. Margaret A. Wilson*
 Ms. Kathy Winslowe*
 Ms. Victoria Winters*
 Mr. James B. Wittrock*
 Mr. Murlyn V. Wolstenholm*
 Ms. Edith M. Zimmerman*
 Ms. Bernice Zuber*

* Deceased

LIFETIME FRIENDS (\$25,000 AND ABOVE IN LIFETIME GIVING)

INDIVIDUALS

\$1,000,000 and above

The Devereaux Foundation

\$500,000 to \$999,999

The Honorable Frank C. Carlucci and Mrs.
 Marcia Myers Carlucci
 Estate of Tirzah A. Lassahn
 Estate of Stanley L. Mackey
 Estate of Gordon L. Mann, Jr.
 Joan L. Rochelle Revocable Trust
 Dr. Paul G. Stern

\$100,000 to \$499,999

Mrs. Betty C. Alewine
 Estate of Dewey V. Allen
 Estate of Florence Atkins
 Mrs. Cecile C. Bartman
 Estate of Lee Lupher Bartruff
 Bohling 1994 Trust
 Estate of Anne R. Bord
 James H. Clark Charitable Foundation
 Estate of Martha F. Cromley
 Estate of Richard L. Davies
 Estate of Marvin M. Davis
 Mr. and Mrs. Ron Doornink
 Robert I. Fendrich Family Trust
 Mr. and Mrs. Peter J. FitzGerald, Sr.
 Estate of Jay B. Foote, Jr.
 Mr. and Mrs. Bruce A. Gates
 Mr. Samuel Hall, Jr.
 Mr. and Mrs. Charles F. Holden III
 Mr. and Mrs. Don Hutchins, Jr.
 Estate of Hazel M. Johnson
 Estate of Alice S. Konze
 Estate of Harriet R. Kutik

Mr. Brock R. Landry and
 Mrs. Diane M. Casey-Landry
 Estate of Jennie C. Li
 Laurie D. Lima Trust
 Mr. Richard Meyer III
 The Neubrecht Family Trust
 Estate of Harvey L. Panzer, Jr.
 Ms. Jean Perin
 Estate of Josephine Ann Perrella
 Mrs. Nancy G. Pyne
 Rogers Rissler Foundation
 Mr. and Mrs. C. T. Rowe
 Estate of Theresa R. Shapiro
 Estate of Eleanor Shelly
 Shure Family Charitable Foundation
 Estate of Dorothy Singleton
 Mrs. Rachel Stern
 Estate of Betty C. Stich
 Mrs. Marianne Stohlman
 Mr. David Tuter
 Estate of Stanley Vomacka
 Ms. Virginia A. Weil
 Estate of Margery L. Weil
 Estate of Margaret A. Wilson
 Estate of Murlyn V. Wolstenholm

\$25,000 to \$99,999

Mr. and Mrs. James G. Aldigé III
 The Honorable Hushang Ansary and
 Mrs. Ansary
 Alfred Bartel and Margaret Bartel 1992
 Revocable Trust
 The Cecile & Fred Bartman Foundation
 Estate of John A. Beaty
 Ms. Catherine P. Bennett and Mr. Fred Frailey
 Mr. and Mrs. John D. Beveridge
 Elizabeth R. Black Revocable Trust
 Mr. Richard F. Blackburn
 Mr. and Mrs. David G. Bradley
 Estate of Rosa Braun
 Michael Brewer and Janet Brown
 Charitable Fund

Mr. and Mrs. Marvin P. Bush
 Mr. Landon H. Butler
 Estate of Ida T. Cavoli
 Mr. Scott Cawthon
 The Honorable Jennifer and
 The Honorable Ronald Christie
 Ms. Concetta DiLeo
 Max and Victoria Dreyfus Foundation
 Mr. and Mrs. Alan P. Dye
 Miss Grace M. Elliott
 Estate of Paul Escalante
 Ms. Linda K. Eyestone
 Estate of Edward Joseph Fabish
 Ms. Barbara Falltrick
 Estate of Anita M. Farmer
 The Honorable Victor H. Fazio
 Estate of Claire Fearnside
 Mrs. Andrea S. Ferris
 Mr. and Mrs. Drew Figdor
 Estate of Howard E. Foltz
 The Carl M. Freeman Foundation, Inc.
 Mrs. Kimberley D. Fritts and
 Mr. Francis M. Turner
 The Honorable Craig Fuller and Mrs. Fuller
 Mr. and Mrs. Rafe Furst
 Helen M. Galvin Charitable Trust
 Lewis T. Gardiner Estate
 Mr. Thomas Gardner
 Mr. and Mrs. Joseph Gleich
 Mr. Phil Gordon
 Estate of Patricia O. Greenwell
 Estate of Mr. and Mrs. Van Buren Hansford
 Estate of J. Harriet Hanson
 Estate of Sarah A. Hayat
 Mr. and Mrs. Phillip Hellmuth, Jr.
 Mr. and Mrs. Terry J. Houlihan
 Mr. and Mrs. Charles S. Houser
 Joel & Carol Jankowsky Foundation
 Estate of Elsie D. Johnson
 Mr. and Mrs. Thomas H. Johnston
 Mrs. Leslie A. Karr

Mr. Anthony P. Kavanagh
 KBPK Foundation
 Virginia J. Kintz Charitable Remainder Trust
 Charles A. Kraenzle Colon Cancer Foundation
 The Lebensfeld Foundation
 Estate of Hal Litzius
 Mr. and Mrs. Gary R. Lytle
 Ms. Kathryn A. MacLane and Mr. Dan Alcorn
 Mr. and Mrs. William F. Magner III
 Estate of Pasquale A. Maresco
 Mr. and Mrs. Michael McGettigan
 Mr. and Mrs. Mark D. McKinnon
 Mr. and Mrs. Michael R. Megargee
 Irene B. Miller Foundation, Bank of America,
 N.A., Co-Trustee
 Mr. Chris Moneymaker
 Estate of Diane M. Montini
 Mrs. Angela Moore
 James L. Mulshine, M.D.
 Mr. and Mrs. Arthur H. Nash
 Mr. and Mrs. Greg O'Brien
 Sylvan and Ann Oestreicher Foundation, Inc.
 Estate of Lonetta C. Patterson
 Mrs. Marjorie F. Perin
 Mr. Markus Persson
 Peterson Family Foundation
 Estate of Sylvia Petters
 Mr. Dennis Phillips
 Ms. Joann A. Piccolo and
 Mr. Timothy Carmody
 Estate of Doreen L. Pietraszkiewicz
 The Lynn R. & Karl E. Prickett Fund
 Mr. and Mrs. Alfred C. Quenneville
 Mr. and Mrs. Rollie Quinn
 Catherine B. Reynolds Foundation
 Rocksprings Foundation
 Mr. and Mrs. Seth D. Rosen
 The Juliet Rosenthal Foundation, Inc.
 Ida I. Schaefer Trust
 Marian A. Schwab Revocable Trust
 Estate of Alfred J. Shaw

The Honorable and Mrs. Kenneth W. Starr
 Mr. and Mrs. Kenneth E. Stinson
 Ken and Ann Stinson Fund
 Estate of Claire B. Strub
 Mr. and Mrs. Mark A. Taylor
 Estate of Overton Arnold Thompson
 Mr. Jonathan M. Topodas
 Estate of Ione M. Uphoff
 Mr. and Mrs. Robert A. Vanderhye
 Estate of Colleen Mae Veith
 Estate of Jan P. Vette
 Mr. and Mrs. G. D. Vieth
 Mrs. Sharon Borg Wall
 Mrs. Irene E. Walters
 Mr. Paul Wasicka
 Mr. Robert S. Weil, Sr.
 Mr. and Mrs. Anthony Welters
 Estate of Sara H. West
 Mrs. Laura S. Williams
 Estate of Kathy Winslowe
 Mr. James B. Wittrock
 The Yuen Foundation
 Mr. Robert H. Zeps
 Estate of Edith M. Zimmerman
 Estate of Bernice Zuber

ORGANIZATIONS

\$1,000,000 and above

Amgen
 Amgen Foundation
 AstraZeneca LP
 Awesome Games Done Quick
 Bristol-Myers Squibb Oncology
 Genentech, Inc.
 Gilead Sciences
 GlaxoSmithKline
 Lilly USA, LLC
 Matthew Hill Foundation, Inc.
 Merck & Co., Inc.
 Novartis Pharmaceuticals Corporation

Pfizer Inc.
 Pharmacia Corporation
 Roche
 Sanofi
 Susan G. Komen
 Walmart Foundation
\$500,000 to \$999,999
 Abbott Laboratories
 Eisai Inc.
 Hologic, Inc.
 National Association of Broadcasters
 PhRMA
 The Yetee, LLC
\$100,000 to \$499,999
 AbbVie, Inc.
 Akin, Gump, Strauss, Hauer & Feld, L.L.P.
 American Cancer Society
 American College of Radiology
 American Council for Excellence & Opportunity
 American Society of Clinical Oncology
 AmerisourceBergen
 Astellas Pharma
 AT&T
 Bank of America
 Bayer Healthcare
 Beckman Coulter
 The Boeing Company
 Caesar's Entertainment Inc.
 Celgene Corporation
 Comcast Corporation
 COMSAT International Holdings
 Daimler
 Deloitte
 EMD Serono, Inc.
 Ernst & Young LLP
 Exact Sciences Corporation
 FedEx Corporation
 Ford Motor Company
 FoxKiser

General Dynamics Corporation
 General Motors Foundation
 Georgetown Lombardi Comprehensive Cancer Center
 The Gloria Heyison Breast Cancer Foundation
 Helsinn Group
 Humble Bundle, Inc.
 IBM Employee Services Center
 Johnson & Johnson
 Kellogg Company
 The Lance Armstrong Foundation
 Living In Pink, Inc.
 Lockheed Martin
 Mac Heist
 Microsoft Corporation
 NACDS Foundation
 National Race for the Cure
 NCTA - The Internet & Television Association
 New York Life
 Northrop Grumman Corporation
 Onyx Pharmaceuticals Inc
 Otsuka America Pharmaceutical, Inc.
 PwC
 Qwest Communications
 Salt River Project
 SBC Foundation
 SBC Telecommunications, Inc.
 Schering-Plough Corporation
 Schering-Plough Legislative Resources L.L.C.
 SIFMA
 Southern Company
 Takeda Pharmaceuticals International Co.
 TE Connectivity Ltd.
 Time Warner, Inc.
 Toyota Motor North America, Inc.
 Tribune Company
 Twitch Interactive, Inc.
 Tyco
 U.S. Chamber of Commerce
 United Parcel Service

United Way of the National Capital Area
 US Oncology
 Verizon
 Viacom
\$25,000 to \$99,999
 1-800 Contacts, Inc.
 A&E Television Networks
 Accenture LLP
 Active Network
 Advanced Medical Technology Association
 Aetna Foundation, Inc.
 Aetna Health Plans
 Aflac
 Agir Ltd.
 Agouron Pharmaceuticals
 Aircraft Owners & Pilots Association
 Airlines for America
 Alaska Poker Association
 Alberto Culver USA, Inc.
 Alcalde & Fay
 Alexandria Real Estate Equities
 Allied Domecq Spirits & Wine USA, Inc.
 Allstate Insurance Company
 Alston & Bird, LLP
 American Airlines, Inc.
 American Beverage Association
 American Chemistry Council
 American Express Company
 American Express Foundation
 American Fuel & Petrochemical Manufacturers
 American Gaming Association
 American Gastroenterological Association
 American Insurance Association
 American Medical Association
 American Society for Radiation Oncology
 American-Italian Cancer Foundation
 AmeriChoice Health Services, Inc.
 Annapurna Games
 APCO Worldwide

Apple Inc.
 Arthur Andersen LLP
 Association for Accessible Medicines
 Aventis Pharmaceuticals, Inc.
 B.K. Miller Company, Inc.
 Baker & Hostetler, LLP
 Battelle
 Becton, Dickinson & Company
 Biotechnology Industry Organization
 Black Entertainment Television
 Bloomberg LP
 BlueCross BlueShield Association
 BlueCross BlueShield of Nebraska
 BNSF Railway Company
 Boehringer Ingelheim Pharmaceuticals, Inc.
 Boston Scientific Corporation
 The Brink's Company
 Brownstein Hyatt Farber Schreck
 BTIG, LLC
 The Capital Group Companies, Inc.
 Capital One Bank
 Capitol Counsel
 Cardinal Health
 Cardon Outreach
 CBS Eco Media
 C-Change
 CenterPoint Energy, Inc.
 CenturyLink
 Chicago Mercantile Exchange
 Christus Health
 CIGNA
 Cingular Wireless
 Cisco Systems, Inc.
 Citigroup Management Corp
 Coalition of Cancer Cooperative Groups, Inc.
 The Coca-Cola Company
 College of American Pathologists
 Community Oncology Alliance, Inc.
 ConAgra Foundation, Inc.
 Corman Construction, Inc.

Council of Fashion Designers of America
Covidien
Covington & Burling
CTIA-The Wireless Association
Dell Computer Corporation
Dell Direct Giving
Devolver Digital
Diageo North America, Inc.
Discovery Communications
Dominion Resources Services, Inc.
Dropbox
Duke Energy Corporation
Edison Electric Institute
El Paso Corporation
Emergent BioSolutions
Endo Pharmaceuticals
Entergy Corporation
Epigenomics, Inc.
Exxon Mobil Corporation
Facebook
Fangamer
Faxitron
The Financial Services Roundtable
FLUOR
The Focus Foundation
Freddie Mac
Friedman, Billings, Ramsey, & Co. Charitable
Foundation, Inc.
Full Tilt Services Corporation
Fund to Prevent Cervical Cancer
Game Time Marketing, LLC
GE Company
General Motors, LLC
Genomic Health, Inc.
Georgia Department of Education
Glover Park Group, LLC
Goldman, Sachs & Co.
The Goodyear Tire & Rubber Company
Green Flash Brewing Co.
Grocery Manufacturers of America, Inc.

GW University Hospital's Center for Breast
Cancer Services
H. J. Heinz Company
Harrah's Operating Company, Inc.
Health Care Services Corporation
Hilton Washington Dulles Airport
The Home Depot
Honeywell International, Inc.
Hunton & Williams LLP
IGH Charitable Foundation, Inc.
iHeartMedia, Inc.
Inova Health System Foundation
Instinet
International Association for the Study of
Lung Cancer
International Physician Networks, LLC
Jack Horner Communications, Inc.
Ketchum
Kiewit Companies Foundation
Koch Industries, Inc.
KPMG LLP
Ladies Charity Classic of the National Capital
Area
Lung Cancer Alliance
Mallinckrodt Pharmaceuticals
Mark Krueger & Associates, Inc.
MassMutual
MasterCard Worldwide
Mayfair Partners, L.P. Boston Market
Mehlman Castagnetti Rosen Bingel &
Thomas, Inc.
Middle-Atlantic Section of the PGA
The Midtown Group
Morgan Stanley & Co., Inc.
Mortgage Insurance Companies of America
Motorola
Mylan Laboratories, Inc.
Myriad Genetics, Inc.
The NASDAQ Stock Market, Inc.
Nathanson + Hauck, LLC
National Association of Convenience Stores

National Dialogue On Cancer Foundation
National Retail Federation
Nestlé
News Corporation Ltd.
NextEra Energy, Inc.
The Nickles Group, LLC
Nortel Networks
NRA-Institute for Legislative Action
Nuclear Energy Institute
Opus East, L.L.C.
Palmetto Peloton Project, Inc.
Palms Casino Hotel
Patton Boggs LLP
Personal Care Products Council
The Pfizer Foundation
PGA Tour Charities, Inc.
PNC
Poker Players Alliance
Poker Productions
Pokerstars
Progress Energy
The Prostate Cancer Foundation
Quest Diagnostics
Quinn Gillespie & Associates, LLC
Recording Industry Association of America
Reliant Resources, Inc.
Reuters
Rockwell Automation
Ron Ruffennach Classic
Rush University Medical Center
Schering-Plough Foundation, Inc.
Shell Oil
Siemens Corporation
SoftBank
Sprint Nextel Corporation
Stohlman Volkswagen, Inc.
Story Partners
Sun Safety Alliance
Sunoco, Inc.
Super Meat Boy

Taiho Oncology
Tarplin, Downs, and Young, LLC
Tele-Communications, Inc.
Tesaro
Teva Pharmaceuticals
Time Warner Cable
tinyBuild, LLC
The Travelers Indemnity Company
TTR Sotheby's International Realty
TXU Business Services
Union Pacific Corporation
United Airlines
United States Steel Corporation
United States Telecom Association
United Way Crusade of Mercy
United Way of Greater Philadelphia &
Southern New Jersey
United Way of New York City
United We Care
Universal Music Group
Van Scoyoc Associates
Vanderbilt University Medical Center
Venable Foundation, Inc.
Vodafone U.S. Foundation
VP Racing Fuels, Inc.
Wachovia
WEST*GROUP Management, LLC
Williams & Jensen, PLLC
Wine and Spirits Wholesalers of America
Women's Shooting Sports Foundation of the
National Capital
World Bank Community Connections Fund
World Reach, Inc.
Wyeth

MEMORIAL AND HONOR TRIBUTES

These tributes are special ways to honor friends, loved ones and colleagues. Honor gifts often mark a special occasion like Mother's or Father's Day, bar/bat mitzvahs or a birthday. Many couples also designate the Prevent Cancer Foundation® as a recipient of contributions in lieu of wedding or shower gifts. In return, the Foundation sends a card acknowledging these thoughtful donations.

HONOR TRIBUTES

Mrs. Carolyn R. Aldigé
Ms. Christina Anderson
Ms. Cecilia Barowski
Mr. Jeremy Behrendt
Mr. and Mrs. Irwin Berman
Mr. Ron Bowlen
Mr. Michael Emory Boyd
Ms. Robin Burgess-Ali
Ms. Virginia Caraballo
Ms. Patricia Carter
Mrs. Diane M. Casey-Landry
Ms. Delia Cesena
Ms. Rosalie Lazzara Cooper
Mr. Stephen Edmund
Mr. Bruce Evans
Mr. Paolo Ferrari
Mrs. Jeremy FitzGerald
Dr. Zvi Gamliel
Ms. Jan Gorecki
Ms. Patty Gunderson
Mr. Roy Haney
Ms. Yvonne Herzog
Mr. Bob Howard
Mr. Nevin Kelly and
Ms. Lynn Shepherd

Mr. Conor Castro Lynch
 Mr. Gary Lytle
 Mr. Ronald McFanin
 Ms. Sheri McGrath
 Mr. Daniel Meneses
 Ms. Monica Moreau
 Mr. Steven Ng
 Mr. Richard Ngo
 Ms. Anne V. Nightingale
 Ms. Abigail Northrup
 Ms. Samantha Marie Pelletier
 Mr. Christian Perry
 Mr. and Mrs. Paul Phaneuf
 Mr. Jerry Quah
 Ms. Deborah Rickabaugh
 Ms. Fonda Rothblatt
 Mr. Stephen Smith
 Ms. Caleigh Terlep
 Mr. and Mrs. Ron Thayer
 Ms. Kitty Thorne
 Mr. Steven J. Vitalie and Ms. Christin W. Berry
 Dr. Amy Woolf

MEMORIAL TRIBUTES

Ms. Brenda Ackerman
 Mr. Phillip Amato
 Ms. Patricia Berg
 Ms. Kelly Brodnik
 Mr. Homer Bundrum
 Ms. Laura Calabrese
 Mr. James Casey
 Ms. Ferne Childs
 Mr. Dan Christian
 Mr. Alphonsus J. Commane
 Mrs. Michele A. Conley
 Ms. Esperanza Corona
 Ms. Lauren McAdam Csordas
 Ms. Dawn DeMarco
 Ms. Connie Dreyman
 Ms. Linda Dunson
 Ms. Diane D. Elkerton

Mr. Michael T. Errecart
 Ms. Mary Fickling
 Ms. Diane Furns
 Ms. Linda Gagermeier
 Ms. Lois George
 Ms. Dorothy Gimbut
 Ms. Roxanne Raley Given
 Ms. Esther Miriam Goldfine
 Ms. Geraldine Gordon
 Ms. Pattie Gould
 Mr. Randall J. Haydt
 Ms. Terrie L. Hopper
 Ms. Eva Hotz
 Ms. Janie Houser
 Ms. Maria Inzana
 Mr. John P. Jesmonth
 Ms. Susie Judd
 Mrs. Laurel B. Kamen
 Mrs. Barbara Klausner
 Ms. Michelle Labourdette
 Ms. Alice Lachance
 Mr. Ross Landry
 Mr. Chiswell Dabney Langhorne
 Ms. Kathryn Laughlin
 Mr. Dale “Hoss” Lewis
 Mr. Zachary Lum
 Mrs. Barbara Lytle
 Ms. Rosalyn Machalow
 Ms. Joyce Marks
 Mr. David H. Massey
 Ms. Cecilia Matozzo
 Lady Kaye Matthews
 Mr. John McCain
 Ms. Frances Mello
 Ms. Krista Mitchell
 Mr. Larry Dean Neal
 Mr. John M. Nethery
 Mr. Craig T. Newton
 Mr. Kenneth R. Osler
 Ms. Rachel Owen
 The Honorable Michael G. Oxley

Mr. Tony Perito
 Mr. Dale Peterson
 Ms. Elia Flores Plechaty
 Ms. Jan Ponce
 Mr. Mike Posey
 Mr. Ronald Price
 Mr. Peter W. Rogers
 Mr. Kermit Schoch
 Ms. Patricia Sue Schuman
 Ms. Patricia Scott
 Ms. Lisl Segall
 Mr. Max Oliver Shemwell
 Ms. Sandra L. Siar
 Mr. Stephen G. Smith
 Ms. Lori P. Smith
 Ms. Lynn L. Smith
 Mr. Jerome and Mrs. Carol Stachura
 Mr. Richard Stohlman
 Mr. Stanley and Mrs. Diane Sussman
 Mr. Harry J. Thayer, Jr.
 Mr. David J. Tracey
 Ms. Karen Ellingson Trueheart
 Ms. Fran Van Duyn
 Ms. Caroline Pryce Walker
 Ms. Alison Wauford
 Ms. Kathryn West
 Ms. Margaret Wiegand
 Mr. D. Anderson Williams
 Mr. and Mrs. J. H. Tyler Wilson
 Ms. Abi Nadeau Winsor
 Ms. JoAnn Spohn Wolf
 Mr. Hoke Yin

THE DEVEREAUX SOCIETY (\$25,000 AND ABOVE)

In 1993, Leslie Cameron Devereaux established the Richard C. Devereaux Outstanding Young Investigator Award in memory of her father who died of lung cancer. This grant or fellowship supports promising lung cancer prevention research.

INDIVIDUALS

\$100,000 to \$999,999

Matthew Hill Foundation, Inc.

\$50,000 to \$99,999

Mrs. Marcia M. Carlucci
 The Devereaux Foundation
 Shure Family Charitable Foundation
 Mr. David Tuter and Mr. Joey Toth

\$25,000 to \$49,999

Mr. and Mrs. Richard F. Blackburn
 Estate of Jay B. Foote, Jr.

ORGANIZATIONS

\$1,000,000 and above

Awesome Games Done Quick

\$100,000 to \$999,999

Genentech, Inc.
 Merck & Co., Inc.
 Twitch Interactive, Inc.
 The Yatee, LLC

\$50,000 to \$99,999

Amgen
 Bristol-Myers Squibb Oncology
 Gilead Sciences
 Lilly USA, LLC
 Pfizer Inc.

\$25,000 to \$49,999

Abbott Laboratories

AbbVie, Inc.
 Anonymous
 Bank of America
 Devolver Digital
 Exact Sciences Corporation
 Helsinn Group
 Hologic, Inc.
 Humble Bundle, Inc.
 Mylan Laboratories, Inc.
 National Association of Broadcasters
 National Retail Federation
 Novartis Pharmaceuticals Corporation
 PhRMA
 Sanofi
 SoftBank Group
 Super Meat Boy
 Tesaro
 U.S. Chamber of Commerce
 VP Racing Fuels, Inc.
 Walmart Stores, Inc.

THE CARLUCCI SOCIETY (\$10,000 TO \$24,999)

Marcia Myers Carlucci and Frank C. Carlucci III* have been longtime friends of the Prevent Cancer Foundation®. A supporter of the Foundation for more than two decades, Marcia Carlucci served as the Foundation board chair for six years and continues to serve as chair emerita and generous supporter of research grants and fellowships.

INDIVIDUALS

The Cecile & Fred Bartman Foundation
 Ms. Misha Botvinnik
 Estate of Robert H. Drapeau
 The Honorable and Mrs. Victor H. Fazio
 Mr. Ari Gibson
 Mr. and Mrs. Charles S. Houser

* Deceased

Sachiko Kuno Foundation, Inc.
 Mr. Brock R. Landry and
 Mrs. Diane M. Casey-Landry
 Mr. and Mrs. William F. Magner III
 Mr. and Mrs. Greg O'Brien
 Ms. Jean Perin
 Ms. Joann A. Piccolo and
 Mr. Timothy Carmody
 Mr. Daniel Ploch
 Mr. and Mrs. Seth D. Rosen
 The Juliet Rosenthal Foundation, Inc.
 Mr. Kenny Schelin
 Mr. and Mrs. Jonathan M. Topodas
 Ms. Virginia A. Weil
 Estate of Kathy Winslowe
 The Yuen Foundation

ORGANIZATIONS

Advanced Medical Technology Association
 Akin, Gump, Strauss, Hauer & Feld, L.L.P.
 American Airlines, Inc.
 American Chemistry Council
 American College of Radiology
 AmerisourceBergen
 Association for Accessible Medicines
 Astellas Pharma
 Becton, Dickinson & Company
 Bloomberg LP
 The Boeing Company
 BTIG, LLC
 Capitol Counsel
 CBS Eco Media
 Celgene Corporation
 CenturyLink
 Citigroup Inc.
 Comcast Corporation
 Community Oncology Alliance, Inc.
 CoStar Group
 Daiichi Sankyo
 Darice, Inc.
 Dropbox

Edison Electric Institute
 Eisai Inc.
 EMD Serono, Inc.
 Exxon Mobil Corporation
 Fangamer
 Farragut Partners
 FLUOR
 Goldman, Sachs & Co.
 Guidehouse
 Health Care Services Corporation
 The Home Depot
 InCoStrat
 Innisfree M&A Incorporated
 Instinet
 International Association for the Study of
 Lung Cancer
 LA Kings
 Mallinckrodt Pharmaceuticals
 MasterCard Worldwide
 MedData
 Microsoft Corporation
 The Midtown Group
 Myriad Genetics, Inc.
 NCTA - The Internet & Television Association
 New York Life
 Northrop Grumman Corporation
 Precision X-Ray, Inc.
 Raymond James and Associates, Inc.
 Sazerac Company, Inc.
 SIFMA
 Southern Company
 Stohman Volkswagen, Inc.
 Taiho Oncology
 Tarplin, Downs & Young, LLC
 UNUM Life Insurance Co.

THE MULSHINE SOCIETY (\$5,000 TO \$9,999)

James L. Mulshine, M.D., is internationally recognized as a leader in lung cancer research. For more than 25 years, he has shared his expertise with the Foundation, serving as Vice Chairman and Scientific Director of the Board of Directors, Co-Chair of the Scientific Review Panel and Chairman of the Steering Committee of the annual Quantitative Imaging Workshop.

INDIVIDUALS

Mr. Corry Addison
 Ms. Sandra Brinson
 Mr. John Collingwood
 Mr. and Mrs. Joe Cuniffe
 Mr. and Mrs. Peter J. FitzGerald, Sr.
 The Carl M. Freeman Foundation, Inc.
 Mr. Brad Gastwirth
 Mr. and Mrs. Terry J. Houlihan
 Mr. Henry Hughes
 Mr. and Mrs. Gordon Hutchins, Jr.
 Joel & Carol Jankowsky Foundation
 Ms. Laurie Jelenek
 Ms. Shabnam Kazmi and
 Mr. Ashok Madhavan
 Mr. Mark Leoncyk
 Mr. and Mrs. Gary R. Lytle
 Irene B. Miller Foundation,
 Bank of America, N.A., Co-Trustee
 Mr. Preston Moore
 Dr. James L. Mulshine and
 Dr. Pamela Mulshine
 Mr. and Mrs. Paul Phaneuf
 Rogers Rissler Foundation
 Mrs. Jeanne Weaver Ruesch
 Mr. Vinay Sarpeshkar
 G. Whitney Snyder Charitable Fund

Mr. George C. Sophocles
 Mr. Steven Velema

ORGANIZATIONS

Aetna Health Plans
 Alston & Bird, LLP
 Biotechnology Industry Organization
 Boehringer Ingelheim Pharmaceuticals, Inc.
 Brownstein Hyatt Farber Schreck
 The Columbus Foundation
 Crossroads Strategies
 Epigenomics, Inc.
 Ford Motor Company
 Glover Park Group, LLC
 The Goodyear Tire & Rubber Company
 Gravy Live, Inc.
 Guggenheim Securities
 Haymakers for Hope Inc.
 IGH Charitable Foundation, Inc.
 Johnson & Johnson
 Lung Cancer Alliance
 Market Securities
 Mission Group
 Monness, Crespi, Hardt & Co., Inc.
 Morgan Stanley & Co., Inc.
 Pittsburgh Penguins
 PNC
 Rockwell Automation
 Takeda Pharmaceuticals International Co.
 TD Securities, Inc.
 TE Connectivity Ltd.
 World Bank Community Connections Fund

THE LEVINE SOCIETY (\$1,000 TO \$4,999)

Bernard Levin, M.D. is a gastroenterologist and leading expert in cancer prevention and early detection. A Professor (Emeritus) at the MD Anderson Cancer Center, he serves as Co-Chair for the Foundation's Scientific Review Panel, generously devoting his time to ensure research grant proposals are assessed through as rigorous peer review.

INDIVIDUALS

Mr. Michael Adam
 H.E., the Ambassador of the United Arab
 Emirates, Yousef Al Otaiba
 Mr. and Mrs. Richard A. Alderson
 Mr. and Mrs. James G. Aldigé III
 Mr. Ryan Alfuth
 Mr. Paul Alvarez
 Mr. Timothy Amburgey
 Mr. Bryce Aona
 Mr. Robert Arciero
 Mr. J. Edmonds Bafford, Jr.
 Dr. Francis Collins and Ms. Diane Baker
 Mr. Reid Baldwin
 Mr. Aaron Barany
 Mr. Steven Barrios
 Mr. Travis Bartholomew
 Ms. Carol G. Barton
 V. Max Beard/Lollee Judd Richardson Trust
 Mr. Sean Behounek
 Mr. Drew Beierwaltes
 Mr. Jeffrey G. Bell
 Mr. Chris Berizko
 Mr. and Mrs. John D. Beveridge
 Mr. John Bidwell
 Mr. Kristopher Bisson
 Mr. Max Blair
 Mr. Adam Blinkinsop

Mr. and Mrs. Nathaniel L. Bohrer	Mr. Xavier Dang	Mr. Max Gonzalez	Ms. Alison Jones	Mr. Keith McDonough
Mr. Harvey R. Boltwood	Mr. Jonathan Daniel	Mr. Robert Goodlatte	Mr. Mark Jordan	Mr. Michael McGuinness
Mr. Hessel Bongers	Dr. Phillip J. Wakelyn and Ms. Suzanne C. DeFrancis	Dr. and Mrs. Gary Gordon	Mr. and Mrs. Gerard Joseph	Mr. and Mrs. Scott McIntyre
Mr. Edward Bontempo	Mr. Nicholas DeTommaso	Mr. Charles-Henri Gourdon	Mr. Eric Joseph	Mr. and Mrs. Pat McTigue
Mr. Adam Bossart	Mr. Andrew Damos	Mr. Patrick Gradie	Mr. Logan Jostes	Mr. Jeffrey Mears
Mr. Thierry Boulanger	Anonymous	Ms. Barbara Greenan	Mr. Igor Justino De Souza	Mr. and Mrs. Dennis I. Meyer
Mr. David Boylan	Ms. Gloria Dittus	Mr. Daniel Griffen	Mr. and Mrs. Thomas Karr	Mr. Jeff Meyer
Mr. Raphael Brambilla	Mr. Steven Dodd	Mr. Sean Griffin	Mr. Paul Kehrer	Mr. Frank Miceli
Mr. Andrew Brand	Mr. and Mrs. Stephen M. Dowicz	Mr. Fabian Gula	Mr. and Mrs. Frederick T. Kieferle, Jr.	Mr. Stephen Miller
Mr. Normen Brendahl	Mr. Zachary Doyle	Mr. Christopher Gunn	Ms. Jackie Kircher	Mr. Marc Mischkowsky
Michael Brewer and Janet Brown Charitable Fund	Mr. Andrew Drake	The Honorable and Mrs. Charles Hagel	Mr. John D. Kling II	Mr. Jack Monegan
Mr. Andrew Brick	Mr. Matt Drury	Mr. Christopher Hale	Mr. Adam Koski	Mr. and Mrs. Jerry B. Moore
Ms. Lisa R. Burgess Engelhard	Mr. Jason Dunkelberger	Mr. Tristan Halvorson	Mr. Marios Koutsios	Mr. Daniel Mossburg
Mr. and Mrs. John Burke	Mr. Sean Dwyer	Mr. Matt Hammerly	Mr. Gregory Kownacki	Mr. Ryan Moursund
Mr. and Mrs. Marvin P. Bush	Mr. and Mrs. Alan P. Dye	Mr. and Mrs. John A. Hanley	Mr. Tim Kuhn	Mr. Edward Mullen
Mr. Landon H. Butler	Mr. and Mrs. Craig E. Dyson	Mr. Vlad-Stefan Harbuz	Ms. Veronique La Rue	Mr. Ryan Myers
Mr. Matthew Caddell	Mr. and Mrs. Edward E. Dyson	Marilyn A. Harris, Ph.D.	Mr. and Mrs. Phillip E. Lantz	Mr. and Mrs. Michael E. Najjar
Ms. Meghan Cahill	Mr. and Mrs. Thomas Eckert	Mr. and Mrs. Jonathan Harris	Mr. and Mrs. Thomas M. Lawler, Jr.	Mr. and Mrs. Arthur H. Nash
Mr. Robert Carlson	Mr. William Eckert	Ms. Jennifer Harris	Mr. Jack Lawson	Mr. Davis Nelson
Mr. Timothy Carver	Mr. Nicolas Eliazord	Mr. Cameron Hellmuth	Ms. Kathryn Lazerow	Mr. Steven Ness
Mr. and Mrs. Sean P. Casey	Mr. and Mrs. Richard Elliott, Jr.	Mr. Jonathan Helmandollar	Mr. Matthew Lee	Mr. Christian Neumeister
Mr. and Mrs. Michael Catanzaro	Mr. Jason Ericson	Mr. Steven Herzog	Dr. and Mrs. Peter L. Levin	Mr. Greg Nickerson
Mr. Aaron Cattell	Mr. Ed Falkowitz	Mr. Seth Hetu	Mr. and Mrs. Christopher F. Lindsay	Mr. Nathaniel Niederkorn
Mr. Scott Cawthon	Mr. Michael Farcasin	Mr. Ryan Hibbard	Mr. Matthew Lord	Mr. Robert Nix
Mr. Cedric Charles	Mr. Fred Underwood and Dr. Blair Farr	Mr. L. Stephen Hill	Mr. Louis B. Loughren	Mr. and Mrs. Richard C. Notebaert
Mr. David Chialastri	Mr. and Mrs. Peter Findlay	Ms. Kimberly Hill	Mr. Simon Lövgren	Mr. John O'Connell
Mr. Fong Chih	Mr. Daniel Fisher, Sr.	Ms. Sarah Elstad Hodne	Mr. and Mrs. Matthew P. Lubman	The Honorable Tom O'Halleran
Mr. Thomas L. Childs	Mr. Jamie Fisher	Mr. and Mrs. Philip E. Holladay, Jr.	Mr. Michael Lumish	Mr. Ted Okon
Mr. William Childs	Mr. and Mrs. John FitzGerald	Mr. Eric Holmes	Mr. Matthew Maas	Mr. Zachary Oliver
Mr. Richard Hans Christ	Mr. and Mrs. Peter J. FitzGerald, Jr.	Mr. and Mrs. Michael W. Hopke	Mr. and Mrs. Rafat Mahmood	Mr. Justin Owen
Mr. Andrew Ciania	Mr. Edward Flick	Mr. and Mrs. Leo S. Horey III	Mr. Alexander Malmberg	Ms. Courtney Padua
Mr. Stephen B. Clark	Mr. Dmitri Freeman	Mr. Matt Housh	Mr. Sean Marks	Mr. Stephen Painter
Mr. Donald Clemens	Mr. Drew Gamble	Mr. and Mrs. John W. Howard, Jr.	Mr. Ian Marshall	Mr. Matthew Park
Mr. Christopher Connett	Mr. Timothy Garis	Mr. Alan Huang	Mr. Antonio Martinez	Mr. Aric Parkinson
Mr. John Contant	Mr. and Mrs. Peter G. Gartlan	Mr. John Hunting	Mr. Benjamin Masius	Ms. Elizabeth C. Patti
Mr. Joseph Coombs	Mr. Sam Geduldig	Mr. Paul Iracane	Mr. James Massey	Mr. Matthew Penrose
Mr. Charlie Cox	Mr. Cole Giene	Mr. Alex Jacobs	Mr. Liam McAuliffe	Mr. Philip Pestinger
Mr. Jay N. Cranford III	Mr. James S. Gimbel	Mr. Michael Jasser	Mr. Daniel J. McCarthy	Mr. Jacob Petersen and Mr. John Campbell
Ms. Nicole Currie	Mr. Michael Glover	Mr. John Johnson	Mr. and Mrs. Patrick J. McCarty	Mr. Justin Pfifer
Mr. Christopher Curry	Ms. Julia Gluck	Mr. Samuel Jones	Mr. Andrew McDonough	Mr. Brandon Pitman

Mr. David Pittman
 Mr. Stephen Platt
 Mr. Kory Ponting
 Mr. Trevor Potts
 Ms. Katharine Powers-Freeling
 Mr. Bryan Joseph Radigan
 Mr. Jonas Rehn
 Mr. Alexander Reinhart
 Mr. Rupert Renard
 Mr. John Rizzo
 Ms. Anne Marie Robertson
 Mr. Charles Rosemarino
 Mr. Steve Ross
 Mr. Jean-Francois Roy
 Mr. Andrew Rueckert
 Mr. Brian Ruiz
 Mr. Jake Russell
 Mr. Jeff Ryan
 Mr. Kyle Sampson
 Mr. Balaji Sarpeshkar
 Mr. and Mrs. Ralph Savarese
 Mr. Gregory Schaeffer
 Mr. James Schafer
 Mr. Samuel Schetterer
 Mr. Benjamin Schneider
 Mr. Matthew Schrader
 Mr. and Mrs. Vance W. Schuemann
 Mr. Thomas Schultz
 Mr. Dominik Schuster
 Ms. Sheila Shaffer
 Mr. Kent Sheldon
 Mr. Jarrod Sherwin
 Mr. Eric Shields
 Mr. and Mrs. Brian K. Shure
 Mr. Alexander Sikora
 Mr. Pawan Singh
 Dr. and Mrs. Michael E. Skehan
 Mr. Gregory Smith
 Mr. Kyle Solomon
 Mr. Carl-Eric Sörqvist

Mr. Tyler Spaulding
 Mr. and Mrs. Martin L. Johnson II
 Mr. Brian Spradlin
 Mr. Albert M. Sramek and
 Mrs. Jane H. Thorpe
 Mr. Michael Staib
 The Honorable and
 Mrs. Kenneth W. Starr
 Ms. Helen Stefan
 Mr. James Steven
 Mr. John A. Stipicevic
 Mrs. Marianne Stohlman
 Ms. Barbara A. Stohlman
 Mr. Alexander Strandberg
 Mr. Brian Stringari
 Mr. Michael Stuber
 Mr. Alex Sun
 Mr. George Swygert and
 Mrs. Lori Jenkins
 The Honorable and Mrs. John Tanner
 Mr. Stephen Tanner
 The Honorable Thomas J. Tauke
 Mr. and Mrs. Robert J. Test
 Mr. and Mrs. J. Timothy Thompson
 Mr. Matthew Thorson
 Mr. Nicholas Tomasello
 Sami & Annie Totah Family Foundation
 Mr. Carl M. Trevisan
 Ms. Karen Triplett
 Mr. Daniel Underwood
 Mr. Jason B. Van Pelt
 Mr. and Mrs. Robert A. Vanderhye
 Mr. Moises Vazquez Hernandez
 Mr. James Von Klemperer
 Mr. John Wachsmann
 Mr. Sam Walczak
 Ms. Delia Wang
 Mr. David Watson
 Mr. Gary Weasel
 Ms. Tammy Weeks
 Mr. Chris Weigel

Mr. Jeffrey Weigel
 Ms. Kathryn Weiss
 Mr. Joseph West
 Mr. James Westbury
 Mr. and Mrs. Mark A. White
 Mr. Benjamin Wiles
 Mrs. Laura S. Williams
 Mr. Adam Williamson
 Mr. Scott Wilson
 Mr. Zachary Wilson
 Ms. Eileen A. Wilson
 Mr. Scott S. Winter
 Mr. Brian L. Wolff
 Ms. Candida P. Wolff
 Ms. Marilyn Yager
 Mr. George York
 Ms. Amber Yust
 Mr. and Mrs. Kenneth Ziman

ORGANIZATIONS

Alexandria Children's Dentistry
 Alexandria Toyota
 All Stage & Sound, Inc.
 Altoona Smiles
 AmazonSmile
 American Cancer Society
 American University Dance Team
 APCO Worldwide
 BNP Paribas Securites
 Bungie Foundation
 Dovel Technologies, Inc.
 Faxitron
 Fidelity Charitable Gift Fund
 The Foundation for the Catholic Diocese of
 Arlington, Inc.
 Franklin Square Group
 Frost Lighting of DC
 Geico
 Georgetown Lombardi Comprehensive
 Cancer Center
 GHC Associates, Inc.

The Hartford
 Holden Management Services
 Howard W. Phillips & Company
 IBM Employee Services
 The Independence School
 Inova Health System Foundation
 Jeffrey J. Kimbell & Associates
 Marika Meyer Interiors
 Marvin J Perry, Inc.
 Michigan Rod Products
 MrDodo
 National Capital Bank
 Network for Good
 ONEHOPE Foundation
 Pharmaceutical Care Management
 Association
 Pleasant Valley State Prison
 Ratner Companies
 Sheridan Family Charitable Fund
 Simpson Development, Inc.
 Steele Foundation, LLC
 Thorn Run Partners, LLC
 Todd & Sargent
 Vanderbilt University Medical Center

THE KESHISHIAN SOCIETY (\$500 TO \$999)

Harold M. Keshishian was a founding board member of the Prevent Cancer Foundation®. His leadership and commitment to the Foundation's mission helped change the landscape of cancer prevention and early detection for generations of individuals affected by cancer.

INDIVIDUALS

Mr. Jonathan Acevedo
 Mr. Bradley Acker
 Mr. Christian Adaker
 Mr. Mark Adams

Mr. Tor Eirik Akselsen
 Mr. Paul Albano
 Mr. Michael Albert
 Mr. Damien Allen
 Mr. Douglas Allen
 Mr. Frederiksen Anders
 Mr. Will Anderson
 Mr. Linus Andersson
 Mr. Peter Annin
 Mr. Nicholas Apostolatos
 Mr. Caleb Atherton
 Mr. Joe Auricchio
 Ms. Michelle Auricchio
 Mr. Jim Avery
 Mr. Stefan Barth
 Ms. Megan Batty
 Mr. Aaron Beal
 Mr. Mark Becwar
 Mr. Craig Bender
 Mr. Scott Benson
 The Honorable and
 Mrs. Jack Bergman
 Mr. and Mrs. Jonathan Bergner
 Mr. Matthew Berry
 Mr. Bryan Beukema
 Mr. Robert Bingham
 Ms. Sascha Birk
 Mr. Zachary Blair
 Mr. Erich Blosssey
 Mr. Adam Bodestyne
 The Honorable and Mrs. David E. Bonior
 Mr. Adam Bosen
 Mr. Thomas Bouvier
 Mr. Benjamin Bowen
 The Dorothy C. Boyce Fund of the
 T. Rowe Price Program for Charitable Giving
 Mr. Michael Boyd
 Mr. Benedikt Braatz
 Ms. Anne Bradbury
 Ms. Roberta Bregstone
 Mr. Denny Breitenfeld

Mr. Timothy Brightbill	Mr. Justin Curran	Mr. Nathan Fluevog	Mr. Alex Gunderson	Mr. Brandon Jones
Ms. Molly Broache	Ms. Roxanne Cutchins	Mr. Jason Flynn	Mr. Isaac Guthrie	Mr. Brian Jones
Mr. Alan Brusky	Mr. Christopher Danks	Ms. Catherine Foltz	Ms. Arin Gutu	Mr. Jonathan Jones
Mr. and Mrs. James J. Bruyette	Mr. Joseph Darcy	Ms. Tacie Fox	Mr. and Mrs. Charles C. Habliston IV	Mr. Bryan Jue
Ms. Catherine Bucknam	Mr. and Mrs. Wallace L. Darneille	Mr. Corey Frang	Mr. Mitchell S. Hailey	Mr. Brian Kallenbach
Ms. Katherine Budin	Mr. Jim Davidowitz	Mr. Erik Frank	Mr. Zach Hall	Mr. Michael Kamph
Mr. Miles Budnek	Mr. Dick Davis	Ms. Lauren Friedman	Mr. Jonas Halvarsson	Ms. Deborah Kaufman
Mr. Robert Burgess	Mr. Charles De Clercq	Mr. Thomas Fuchs	Mr. Devin Hanggi	Mr. Christopher Kearney
Ms. Kimberly Butler	Mr. Timothy De Vries	Mr. and Mrs. Roger P. Furey	Mr. Daniel Hanson	Mr. Jonathan Kellner
Mr. David Byard	Ms. Maxime Delord	Ms. Barbara L. Furst	Mr. Daniel Harrigan	Mr. Ian Kelly
Mr. Adam Cake	Mr. and Mrs. Edwin K. Delph	Mr. Michael Furtak	Ms. Erin Hartwell	Mr. Oisin Kelly
Mr. Domenic Callocchia	Mr. George Dertadian	Ms. Quiana Gainey	Ms. Cookab Hashemi	Mr. Patrick Kelly
Mr. Adam Canham	Mr. Kunal Desai	Ms. Clarissa Garvey	Ms. Martha F. Hay	Mr. Sean Kelly
Mr. and Mrs. Donald G. Carlson	Mr. Nick Detweiler	Mr. Ewald Geenen	Mr. Borys Hayda	Mr. Thomas Kern
Mr. Tyler Carlson	Mr. Sean DeVarney	Mr. Philippe Genois	Mr. Alex Headley	Mr. Clark Kerr
Mr. Dustin Carlton	The Deville Foundation	Mr. Gregory Gentry	Mr. Johannes Heckl	Mrs. Melissa Anne Keshishian
Mr. Michael Carns	Ms. Yesenia Diaz Millet	Mr. Alexander Gerber	Ms. Lauren Heimbigner	Mr. Jacob Klinker
Mr. Joshua Carr	Mr. Charles DiLaurenzio	Mr. Aldric Giacomoni	Ms. Jennifer Henry	Mr. Ryan Klock
Mrs. Julie Carson	Ms. Concetta DiLeo	Mr. Seth Gibelyou	Mr. Drew Hill	Mr. Joseph Knips
Mr. Carlos Castillo	Mr. Martin Dobler	Mr. Erik Gilling	Mr. Daniel Hillis	Mr. Bogdan Kornik
Mr. Allan Cecil	Mr. Marc Dominjon	Mr. Joshua Gladstone	Mr. Lukas Hlous	Mr. Adam Kornmeyer
Mr. Joseph Chalfant	Mr. Samuel Donow	Mr. Adam Gleitman	Mr. Gregory G. Hoffman	Mr. Paul Kratt
Mr. Doran Chamberlain	Mr. Matt Dörner	Mr. Paul Louis Gleize	Mr. Isaiah Holmes	Mr. Zak Kreiter
Mr. Ka Long Chan	Mr. Zachary Dromsky	Mr. Wade Glenn	Ms. Keri Honea	Mr. and Mrs. John H. Kreutzer
Mr. Ryan Chandler	Mr. Ken Duberstein	Ms. Lynne Goerner	Mr. Robert Hope	Mr. Ethan Kuperman
Mr. Brian Chau	Mr. Christopher Dudley	Mr. and Mrs. Neil J. Goetzman	Mr. Alex Houston	Mr. Caleb Kwan
Mr. Bryan Chudnow	Mr. Alex Dudman	Mr. Todd Goldring	Ms. Elizabeth I. Huffman	Mr. and Mrs. Matthew Labman
Mr. David Chuhay	Mr. and Mrs. William F. Dunbar	Mr. Philip Goldstein	Mr. and Mrs. Timothy A. Hughes	Mr. Andrew Laffin
Mr. Eric Clark	Mr. Michael Ecton	Mr. Bryson Gordey	Mr. Paul Hughes	Mr. Dean Laganieri
Mr. Brad Clarke	Mr. Andrew Eierman	Mr. John Gottlich	Mr. Ryan Humm	Ms. Tricia Lakis
Mr. Matthew Cleveland	Mr. Justin Elder	Mr. Richard T. Gould	Mr. Christopher Hunt	Mr. Daniel Lancaster
Ms. Lindsay Coburn	Mr. Philipp Engstfeld	Mr. Marco Grabinski	Mr. David Hunt	Mr. David Latshaw
Mr. Jacob Collins	Mr. Matthew Evry	Mr. Elliott Gragg	Mr. David Hunter	Mr. JohnMark Lau
Ms. Nichole Connor	Mr. Edward Fan	Mr. Robert L. Graveline	Mr. David Ipsen	Mr. Joseph Lawson
Ms. Dana Conrad	Mr. Nathan Ferguson	Mr. and Mrs. Edward L. Greenberg	Mr. Tom Jackson	Mr. Sam Lawton
Ms. Stefanie Contreras	Mr. Sigmund Fidyke	Mr. Scott Greene	Mr. Lucas Jacobs	Mr. Michael Leach
Ms. D'Arcy Cook	Mr. and Mrs. Michael A. Fife	Mr. David Greer	Ms. Sierra James	Mr. Antoine Leblanc
Mr. Christopher Cordisco	Mr. Jesse Fisher	Mr. James Gregor	Mr. Dominic Jandrain	Mr. Nicolas Legay
Mr. Cyrille Crespy	Ms. Jeremy FitzGerald	Mr. and Mrs. Brian J. Griffin	Mr. Ryan Jenkins	Mr. Marcus Lehto
Mr. Emmanuel Cron	Mr. Philippe Flamm	Mr. John Gross	Mr. David Johnson	Mr. Daniel Lemcke

Mr. Quentin Lepiller	Mr. Joseph McMahan	Ms. Elizabeth O'Connor	Mr. James Redmond	Mr. and Mrs. Thomas A. Scully
Mr. Dorian Letrong	Mr. and Mrs. Daniel P. Meyer	Mr. Blair O'Donovan	Mr. Daniel Reed	Mr. Walter Christopher Sczudlo
Mr. and Mrs. Geoffrey Levin	Mr. Paul Meyer	Mr. Zachary Oldson	Mr. Zachary Regelski	Mr. Mordecai Segall
Ms. Elma Levy	Mr. Kyle Michaels	Mr. Cameron Oliphant	Mr. Steven Regidor-Yanez	Mr. Peter Segall
Mr. Jonathan Lexa	Mr. James E. Millar and Mrs. Tracy Hitt Millar	Ms. Briana Ortega	Mr. and Mrs. Peter B. Reilly	Mr. Paul Seidel
Mrs. Lisa Licht	Ms. Kirsten Miller	Mr. Daniel Ortosky	Mr. Erik Reimers	Mr. Matthew Sell
Mr. and Mrs. Francis Lightly	Philip J. Miller, M.D.	Mrs. Patricia Oxley	Mr. Tony Reiner	Mr. Jacob Shaak
Mr. Hugo Linck	Mr. Anthony Mills	Mr. Adrian Packel	Mr. Adam Reyher	Mr. and Mrs. C. Stephen Shaw, Jr.
Mr. Liwei Liu	Mr. John Milner	Mr. Grant Palmatier	Mr. Ronald Rhinesmith	Ms. Jerre Sherbenou
Mr. Connor L. Locke	Mr. David Mitchell	Mr. Sangjune Park	Mr. Gabriel Rice	Mr. Steven Shine
Mr. Mike Lorbetske Jr	Mr. Donald Mitchell	Mr. Jonathan Parkes	Ms. Laurie Richards	Mr. Steven Simeone
Mr. Steven Losh	Mr. Thomas Mitchell	Mr. Jordan Parkin	Mr. Kevin Richardson	Mr. Ryan Sit
Mr. Harold Low	Ms. Elizabeth Mixer	Mr. Joseph Anthony Parrott III	Ms. Lori Rieley	Mr. and Mrs. Carson B. Smith
Mr. Nigel Lowrie	Mr. Bradley A. Momberger	Mr. Erwin Matthew Patalinghug	Mr. Hugh Riley	Mr. Adam Smith
Ms. Melusine Ma	Mr. James Monaco	Mr. Neil Patel	Mr. Aaron Ritter	Mr. Benjamin Snyder
Ms. Terri MacDougall	Ms. Sarah Moran	Mr. and Mrs. Brett A. Patelsky	Mr. Justin Robb	Mr. James Soliman
Mr. Justin Madill	Ms. Timothy Morita	Ms. Amanda Peck	Mr. William Robitske	Mr. RJ Soni
Mr. Jimmie Maggard	Mr. Michael Morrissey	Mr. Michael Pena	Mr. Aaron Rogers	Mr. Nathan Spencer
Mr. Marc Magruder	Mr. Westley Moss	Mr. Anthony Pensiero	Mr. Denys Rogov	Mr. Daniel Spiers
Mr. James Mahoney	Mr. Eric Mulligan	Mr. Julian Percival	Mr. Jeremy Roman	Mr. William C. Sprouse
Mr. James Manley-Buser	Mr. Andy Murray	Mr. Ciaran Persch	Mr. Doron Rosenberg	Mr. Alexander Stockl
Mr. Stuart Manning	Mr. and Mrs. Matthew Murrell	Mr. Jonathan Peterson	Mr. Alon Rosin	Mr. Cyé Stoner
Ms. Bobbie Marinelli	Mr. Matthew Myers	Peterson Family Foundation	Mr. Spencer Ross	Mr. Hatim Sukhla
Mr. Matthew Mark	Mr. Kenneth Naishtat	Mr. Jeremy Pflug	Mr. Benjamin Rossing	Mr. and Mrs. Thomas M. Sullivan
Mr. Tyler Marklyn	Sis Nash Memorial Fund of the Hampton Roads Community Foundation	Mr. Jonathan Phippen	Mr. Richard Ruffino	Mr. Steven Sundrud
Mr. Gerrit Marsch	Mr. Alvaro Navas Peire	Mr. Johannes Piehler	Mr. Michael Ruiz	Mr. Edward Swinson
Mr. Adam Marshall	Mr. Kevin Nee	Mr. Stephen Polacek	Mr. Steve Rushing	Mr. Glen Takahashi
Mr. Laurent Matheo	Mr. Michael Neligh	Mr. Michael Poveromo	Mr. and Mrs. Michael Rusnak	Mr. Duncan Tauxe
Mr. Joseph Matteucci	Mr. Brandon Nelson	Mr. Cory Powers	Mr. Jack Ryan	Mr. Camden Tayler
Mr. James J. Matthews, Jr.	Mr. Christopher Nelson	Mr. Matt Prince	Mr. James Saba	Mr. John Taylor
Mr. Christian McBride	Mr. John Ness	Ms. Anna Pugh	Mr. Ian Sandler	Mr. Harry L. Thomas, Jr.
Mr. Jacob McCammant	Mr. Trinh Ngo	Mr. Jeff Pulver	Mr. and Mrs. Thomas J. Sargeant	Mr. Matthew Thomas
Mr. James McCarthy	Mr. Mike Nielsen	Mr. Antti Puranen	Mr. David Sassen	Ms. Melissa Thomas
Mr. Kevin McDougall	Mr. Nathan Nightingale	Mr. Daniel Quick	Mr. Matthew Sawyer	Jennifer Lynn Thompson Memorial Foundation
Ms. Ashley McGee	Mr. Ryan Noblett	Mr. Nicholas Ragan	Elizabeth and Scott Scheffrin Foundation	Mr. Greg Thorne
The Honorable and Mrs. Raymond J. McGrath	Mr. Kevin Norman	Mr. Joseph Rajchwald	Mr. and Mrs. David J. Schiappa	Mr. Matthew Tjeerdsma
Mr. Brian McHugh	Ms. Jill Norton	Ms. Anjali Rao	Mr. Jared Schmitz	Mr. Jackson Toeniskoetter
Mr. Liam McKeown	Ms. Amy O'Brien	Mr. Roald Rasmussen	Mr. Andrew Schoonmaker	Mr. JD Tomlinson
Mr. Jordan McKewon	Mr. and Mrs. Patrick M. O'Connor	Mr. David Rebarchak	Mr. Douglas Schwartz	Mr. Lacouette Toutedouce
Mr. Bernard McKinney		Mr. John Reck	Mr. Marc Sciarrino	Mr. Jeffrey Townsley

Mr. Peter Tran
 Bruce J. Trock, Ph.D.
 Mr. Aaron Turner
 Mr. Marius Utheim
 Mr. Caleb Veenstra
 Mr. Andreas Vesterlund
 Mr. Julien Viney
 Mr. Dominick Viramontes
 Mr. Thomas Volkmann
 Mr. Michael Wainwright
 Mr. and Mrs. Don Walker
 Ms. Anne E. Wall
 Mr. Benjamin Weber
 Mr. John Weber
 Louis M. Weiner, M.D.
 David C. Weintritt, M.D.
 Mr. Nicholas Weiss
 Mr. Tyler West
 Mr. Adam Westall
 Mr. Travis Wiertzema
 Mrs. Terese T. Williams
 Mr. and Mrs. Robert M. Willis
 Mr. Jonathan Wilson
 Mr. Trevor Wilson
 Mr. Justin Winkler
 Mr. Andrew Wissler
 Mr. Wayne Witzke
 Mr. Charles Wolfe
 Mr. Clinton Woltering
 Mr. Mitchell Wong
 Mr. Jason Wood
 Mr. and Mrs. René R. Woolcott
 Mr. John Wreford
 Mr. Donald L. Wright
 Ms. Rachel Wright
 Ms. Hallie Wyman
 Mr. Seth Yates
 Ms. Munevver Yolas
 Mr. Matthew Young
 Mr. Robert Yu

Mr. Scott Zadigian
 Mr. Philip Zahoruyko
 Mr. Michael Zehntner
 Mr. John M. Zerbee
 Mr. Bowei Zhang

ORGANIZATIONS

ACE Group
 AEG
 Chain Bridge Bank
 Cindi's Boutique
 Clark Construction
 Ensurise, LLC
 Fairgrounds, LLC
 Fortis Property Group
 Friendship Hospital for Animals
 John Paul II High School
 Peak IT Services, LLC
 United Way California Capital Region
 United Way of Greater Philadelphia & Southern New Jersey

BENEFICIARY EVENTS

Individuals and organizations select the Prevent Cancer Foundation® to be the beneficiary of funds raised through events they organize and host. Beneficiary events vary in size and type, and include lemonade stands, art shows, water ski competition and online video games, silent auctions and more.

/r/leagueoflegends
 Altoona Smiles
 Awesome Games Done Quick
 Breakaway from Cancer
 Lisa Burgess Engelhard
 Champion Awareness

Figdor "Bad Beat on Cancer"
 Poker Tournament
 Fitness Kick
 Haymakers for Hope
 Mikael Hedberg
 Helsinn Reception at J.P. Morgan
 The Independence School Dress Down Day
 LA Kings
 Mark and Friends
 Martinis Matter
 MrDodo
 Nellie's Sports Bar
 Night Shame's Stream to Smash Cancer
 Nomadic Kitchen
 No-Shave November
 Old Dominion Bocce
 Pirates Prevent Cancer
 The Quest to Defeat Cancer:
 Steering Wheel of Time
 Shiloh Missionary Baptist Church
 Source Gaming
 Sunset on the Potomac
 Time to Thrive
 TJHSST Field Hockey Fundraiser
 VP Racing Fuels
 Washington Capitals

IN-KIND DONORS

The following donors have supported the Prevent Cancer Foundation® with in-kind gifts and services during the year.

INDIVIDUALS

H.E., the Ambassador of Azerbaijan,
 Elin Suleymanov, and
 Mrs. Lala Abdurahimova
 H.E., the Ambassador of Hungary,
 Dr. László Szabó, and
 Dr. Ivonn Szeverényi

H.E., the Ambassador of Ireland,
 Daniel Mulhall, and
 Mrs. Greta Mulhall
 H.E., the Ambassador of Monaco,
 Maguy Maccario Doyle
 H.E., the Ambassador of Switzerland,
 Martin Dahinden, and Mrs. Anita Dahinden
 Ms. Catherine Bennett and
 Mr. Fred Frailey
 Alejandro and Nancy Escovedo
 Mr. and Mrs. Peter J. FitzGerald
 Mr. and Mrs. Craig Fuller
 Mr. and Mrs. Bruce A. Gates
 Mr. Don Hutchins
 Ms. Deborah Lowham
 Mr. and Mrs. Gary Lytle
 Mr. Frank Mermoud and
 Mr. Ned Shannon
 Mr. Michael Meyer
 Mr. and Mrs. Paul Phaneuf
 Stefanie Harrington Photography
 Mr. David Tutera
 Ms. Laurie Williams

ORGANIZATIONS

Affordable Signs
 Alexandra Clancy
 Alton Lane
 Athena Water
 Beam Suntory
 Blank Label
 Bradford Portraits
 Breitling Boutique, Oxon Hill
 Capital Hilton
 College Hunks of NOVA
 Design Cuisine
 District Dogs
 The Dolder Grand Hotel
 Far Niente Winery
 Giant
 Glacier Express
 Hall Wines St. Helena

Hartcorn Studios
 Hermès of Paris
 Honest Tea
 Hotel Bellevue Palace
 The Jane Goodall Institute
 Lovington Winery
 Lufthansa Group Airlines
 Mindy Lam Couture
 The Napa Valley Reserve
 National Hockey League
 Ocean Reef Club
 Outside the Lines Pet Photography
 Paradigm Event Management
 Politico
 Robert Campbell Fine Portraiture
 Sazerac Company, Inc.
 Southwest Airlines
 Subway
 Tosca DC
 Toscana Saporita Cooking School
 Total Wine & More
 Trader Joe's
 Vier Waldstättersee
 The Waldhotel Burgenstock Hotels & Resort
 Wegmans
 Whirlpool
 Windows Catering Company
 Wine & Spirits Wholesalers
 of America
 Wine Institute
 Wolf Trap Foundation for the Performing Arts

Support Medical Advisory Board

CHAIRMAN

David S. Alberts, M.D.

Director Emeritus, University of Arizona Cancer Center;
Regents Professor of Medicine, Pharmacology,
Nutritional Sciences, Public Health and BIO5

Jasjit S. Ahluwalia, M.D., M.P.H., M.S.

Professor, Brown University School of Public Health

Bart Barlogie, M.D., Ph.D.

Professor of Medicine, Hematology and Medical
Oncology, Icahn School of Medicine, Mount Sinai
Medical Center

Monica M. Bertagnolli, M.D., FACS, FASCO

Past President, American Society of Clinical Oncology;
Chief, Division of Surgical Oncology at Dana-Farber
Cancer Institute and Brigham and Women's Hospital;
Professor of Surgery, Harvard Medical School;
Associate Surgeon, Brigham and Women's Hospital
and Dana-Farber Cancer Institute

Rachel F. Brem, M.D.

Director, Breast Imaging and Interventional Center;
Professor of Radiology, George Washington University
Medical Center

Paul A. Bunn Jr., M.D.

Professor, James Dudley Chair in Cancer Research,
University of Colorado Denver School of Medicine

Sigrid Carlsson, M.D., Ph.D., M.P.H.

Assistant Attending Epidemiologist, Memorial Sloan
Kettering Cancer Center

Philip Castle, Ph.D., M.P.H.

Professor, Albert Einstein College of Medicine and
Global Coalition Against Cervical Cancer

Kenneth H. Cowan, M.D., Ph.D.

Director, Fred and Pamela Buffett Cancer Center,
University of Nebraska Medical Center

Riccardo Dalla-Favera, M.D.

Director, Institute for Cancer Genetics Irving Cancer
Research Center, Columbia University Medical Center

William S. Dalton, M.D., Ph.D.

Founding Director, Personalized Medicine Institute, H.
Lee Moffitt Cancer Center & Research Institute

Andrew Dannenberg, M.D.

Henry R. Erk, M.D. – Roberts Family Professor of
Medicine, Weill Medical College of Cornell University

Raymond N. DuBois, M.D. Ph.D.

Dean, College of Medicine, Medical University of South
Carolina

H. Shelton (Shelley) Earp III, M.D.

Director Emeritus, Lineberger Comprehensive Cancer
Center, University of North Carolina

Stephen B. Edge, M.D., FACS, FASCO

Vice President, Healthcare Outcomes and Policy,
Roswell Park Cancer Institute

Margaret Foti, Ph.D., M.D., (h.c.)

Chief Executive Officer, American Association for
Cancer Research (AACR)

Harold P. Freeman, M.D.

Chairman Emeritus and Founder, Ralph Lauren Center
for Cancer Care and Prevention

Patricia A. Ganz, M.D.

Professor, UCLA Schools of Medicine and Public
Health; Director, Division of Cancer Prevention &
Control Research, Jonsson Comprehensive Cancer
Center, University of California, Los Angeles

David M. Gershenson, M.D.

Professor and Chair, Department of Gynecologic
Oncology, The University of Texas MD Anderson
Cancer Center

Edward Giovannucci, M.D., Sc.D.

Associate Professor of Nutrition and Epidemiology,
Harvard School of Public Health

Anna R. Giuliano, Ph.D.

Professor and Director of Cancer Prevention, H. Lee
Moffitt Cancer Center and Research Institute

Gary E. Goodman, M.D., M.S.

Staff Oncologist/Joint Member, Swedish Cancer
Institute, Fred Hutchinson Cancer Research Center

Garth Graham, M.D., M.P.H.

President, Aetna Foundation

Stanley R. Hamilton, M.D.

Professor and Head, Division of Pathology and
Laboratory Medicine, The University of Texas MD
Anderson Cancer Center

Claudia Henschke, M.D., Ph.D., FCCP

Clinical Professor of Radiology, The Mount Sinai
Hospital, Department of Radiology, Mount Sinai
School of Medicine

Elmer E. Huerta, M.D., M.P.H.

Director, Cancer Preventorium, Washington Cancer
Institute, Washington Hospital Center

Derek M. Huffman, Ph.D.

Assistant Professor of Medicine and Molecular
Pharmacology, Co-Director, Healthy Aging Physiology
Core, Institute for Aging Research, Albert Einstein
College of Medicine

Lovell Allan Jones, Ph.D.

Research Faculty, College of Science & Engineering,
Texas A&M University Corpus Christi

Karen E. Kim, M.D., M.S.

Office of Community Engagement and Cancer
Disparities, University of Chicago

T. Peter Kingham, M.D., FACS

Associate Attending Surgeon, Hepatopancreatobiliary
Service Department of Surgery; Director, Global
Cancer Disparity Initiatives, Memorial Sloan Kettering
Cancer Center

Ann G. Kulze, M.D.

Founder and CEO, Dr. Ann & Just Wellness, LLC

Charles ("Chip") Landen, Jr., M.D., M.S.

Associate Professor, University of Virginia Health
System, University of Virginia

Patrick J. Loehrer, Sr., M.D.

Director, Melvin and Bren Simon Cancer Center,
Indiana University

John L. Marshall, M.D.

Professor of Medicine; Chief, Division of Hematology
and Oncology, MedStar Georgetown University
Hospital; Professor of Medicine and Oncology and
Associate Director for Clinical Care, Lombardi
Comprehensive Cancer Center

Elena Martinez, M.P.H., Ph.D.

Professor of Family and Preventive Medicine, Moores
Cancer Center, University of California, San Diego

Harold L. Moses, M.D.

Director Emeritus, Vanderbilt-Ingram Comprehensive
Cancer Center

Larry Norton, M.D.

Deputy Physician-in-Chief, Breast Cancer Programs,
Memorial Sloan Kettering Cancer Center

Gilbert S. Omenn, M.D., Ph.D.

Professor of Internal Medicine, Human Genetics and
School of Public Health, University of Michigan

Darrell S. Rigel, M.D.

Clinical Professor of Dermatology, New York Medical
Center

John C. Ruckdeschel, M.D.

Director, University of Mississippi Cancer Institute

Kathleen Schmeler, M.D.

Associate Professor, Department of Gynecologic
Oncology and Reproductive Medicine; Director, M.D.
Anderson Cancer Center and Lyndon B. Johnson
Hospital Colposcopy Clinics

Support Scientific Review Panel

David Schottenfeld, M.D., M.Sc.

John G. Searle Professor Emeritus of Epidemiology and Internal Medicine, University of Michigan School of Public Health

Karen Sfanos, M.S., Ph.D.

Associate Professor of Pathology, Johns Hopkins Medicine

Erich Sturgis, M.D., M.P.H., FACS

Professor, M.D. Anderson Cancer Center and University of Texas

George J. Weiner, M.D.

Director, Holden Comprehensive Cancer Center, University of Iowa

Richard C. Wender, M.D.

Chief Cancer Control Officer, American Cancer Society

Petra Wilder-Smith, D.D.S., Ph.D.

Director of Dental Programs, Beckman Laser Institute and Medical Clinic, University of California Irvine

Walter C. Willett, M.D., Dr.P.H.

Frederick John Stare Professor of Epidemiology and Nutrition; Chairman, Department of Nutrition, Harvard University

Stephen C. Yang, M.D.

Chief, Division of Thoracic Surgery; Associate Professor, Surgery and Oncology, The Johns Hopkins Medical Institution

Robert C. Young, M.D.

President, RCY Medicine, NCCN Foundation Board of Directors

SCIENTIFIC REVIEW PANEL

Bernard Levin, M.D. (Co-Chair)

Professor (Emeritus), University of Texas, MD Anderson Cancer Center

James L. Mulshine, M.D. (Co-Chair)

Vice-Chairman, Scientific Director of the Prevent Cancer Foundation; Professor (Emeritus), Rush Medical College, Rush University; Associate Director, Institute for Translational Medicine, Rush University

Christopher Albanese, Ph.D.

Professor, Departments of Oncology and Pathology; Director, Preclinical Imaging Research Laboratory (PIRL), Lombardi Comprehensive Cancer Center, Georgetown University Medical Center

Rebecca Ashare, Ph.D.

Assistant Professor, Center for Interdisciplinary Research on Nicotine Addiction, Perelman School of Medicine, University of Pennsylvania

Janet Audrain-McGovern, Ph.D.

Associate Professor, Department of Psychiatry, Perelman School of Medicine, University of Pennsylvania

David Berrigan, Ph.D., M.P.H.*

Behavioral Research Program, Division of Cancer Control and Population Sciences, National Cancer Institute

**Dr. Berrigan is serving in his personal capacity.*

Robert Clarke, Ph.D., D.Sc.

Dean for Research, Professor of Oncology, Lombardi Comprehensive Cancer Center, Georgetown University Medical Center

Nancy Emenaker, Ph.D., M.Ed., R.D.N., L.D., F.A.N.D.

Program Director, National Cancer Institute Nutritional Science Research Group, Division of Cancer Prevention

Leena Hilakivi-Clarke, Ph.D.

Professor, Oncology, Georgetown University

Stephen D. Hursting, Ph.D., M.P.H.

Professor, Department of Nutrition and Nutrition Research Institute; Director, Division of Nutritional Biochemistry; Member, Lineberger Comprehensive Cancer Center, University of North Carolina at Chapel Hill

Brian Lehmann, Ph.D.

Research Assistant Professor, Vanderbilt University, Vanderbilt-Ingram Cancer Center

Mary Beth Martin, Ph.D.

Professor, Departments of Oncology, Biochemistry and Molecular Biology, Lombardi Comprehensive Cancer Center, Georgetown University Medical Center

Carola Neumann, M.D.

Associate Professor, Department of Pharmacology and Chemical Biology, UPMC Hillman Cancer Center, Magee-Women's Research Institute

Pierre Massion, M.D.

Professor of Medicine, Vanderbilt University Medical Center

Marc D. Schwartz, Ph.D.

Professor, Oncology; Associate Director for Population Science; Co-Director, Fisher Center for Hereditary Cancer and Clinical Genomics Research, Georgetown University, Georgetown Lombardi Comprehensive Cancer

Peter G. Shields, M.D.

Deputy Director, Comprehensive Care Center; Professor, College of Medicine; Julius F. Stone Chairman in Cancer Research, James Cancer Hospital, The Ohio State University, Wexner Medical Center

Kenneth D. Tew, Ph.D., D.Sc.

John C. West Chair in Cancer Research; Chairman, Department of Cell and Molecular Pharmacology and Experimental Therapeutics, Medical University of South Carolina

Danyelle M. Townsend, Ph.D.

Assistant Professor, Department of Drug Discovery and Biomedical Sciences; Director, Analytical Redox Biochemistry, Medical University of South Carolina

Bruce J. Trock, Ph.D.

Director, Division of Epidemiology, Brady Urological Institute

Frank Hinman Jr. Professor of Urology

Professor of Epidemiology and Oncology, Johns Hopkins University School of Medicine

Kent E. Vrana, Ph.D.

Elliot S. Vesell Professor; Chair, Department of Pharmacology, Penn State College of Medicine

Zhen Zhang, Ph.D.

Associate Professor, Department of Pathology and Oncology, Johns Hopkins Medical Institutions

Statement of Financial Position for the Year Ending June 30, 2019

ASSETS

CURRENT ASSETS

Cash and Cash Equivalents	270,384
Accounts and Pledges Receivable	358,218
	628,602

INVESTMENTS

General	5,625,064
Donor Restricted and Board Designated Funds	7,182,497
	12,807,561

PROPERTY

Office Furniture and Equipment	206,383
Accumulated Depreciation	(135,990)

TOTAL PROPERTY ASSETS 70,393

OTHER ASSETS

Prepaid Expenses	41,784
Deposits	22,636
Charitable Gift Annuities	-
Interest in Remainder Trusts	234,845
Deferred Compensation Plan	303,960
	603,225

TOTAL ORGANIZATION ASSETS 14,109,781

LIABILITIES

CURRENT LIABILITIES

Accounts Payable and Accrued Expenses	133,282
Deferred Income	399
Grants Payable	1,208,321
	1,342,002

LONG-TERM LIABILITIES

Deferred Rent	62,559
Charitable Gift Annuities	-
Deferred Compensation	303,960
	366,519

TOTAL LIABILITIES 1,708,521

NET ASSETS

Unrestricted	10,728,603
Temporarily Restricted	1,394,244
Permanently Restricted	278,413
	12,401,260

TOTAL LIABILITIES AND NET ASSETS 14,109,781

STATEMENT OF ACTIVITIES AND CHANGES IN NET ASSETS

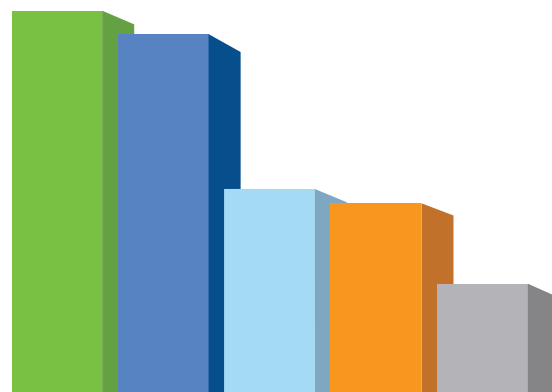
SUPPORT AND REVENUE

Contributions	1,756,351
Bequests and Other Income	251,872
Investment Income	658,769
In-kind Contributions	150,704
Special Events	4,476,979
Less: Costs of Direct Benefit to Donors	(271,212)
TOTAL SUPPORT AND REVENUE	7,023,463

EXPENSES

Programs	
Research	2,105,871
Education and Public Awareness	2,031,822
Community Outreach	1,024,740
Management and General	574,007
Fundraising	1,091,186
TOTAL EXPENSES	6,827,626

Change in Net Assets	195,837
Net Assets, Beginning of Fiscal Year	12,205,423
NET ASSETS, END OF YEAR	12,401,260



EXPENSES BY PERCENTAGE

- 31% Research
- 30% Education and Public Awareness
- 16% Fundraising
- 15% Community Outreach
- 8% Management and General



*Saving lives across all populations through
cancer prevention and early detection.*

A charity you can trust!



1600 Duke Street, Suite 500 | Alexandria, VA 22314

Phone: 703.836.4412 | Fax: 703.836.4413 | Toll-free: 800.227.2732

www.preventcancer.org