



prevent&cancer<sup>®</sup>  
FOUNDATION

**WHEN IT COMES  
TO CANCER,  
WE NEED TIME  
ON OUR SIDE.**

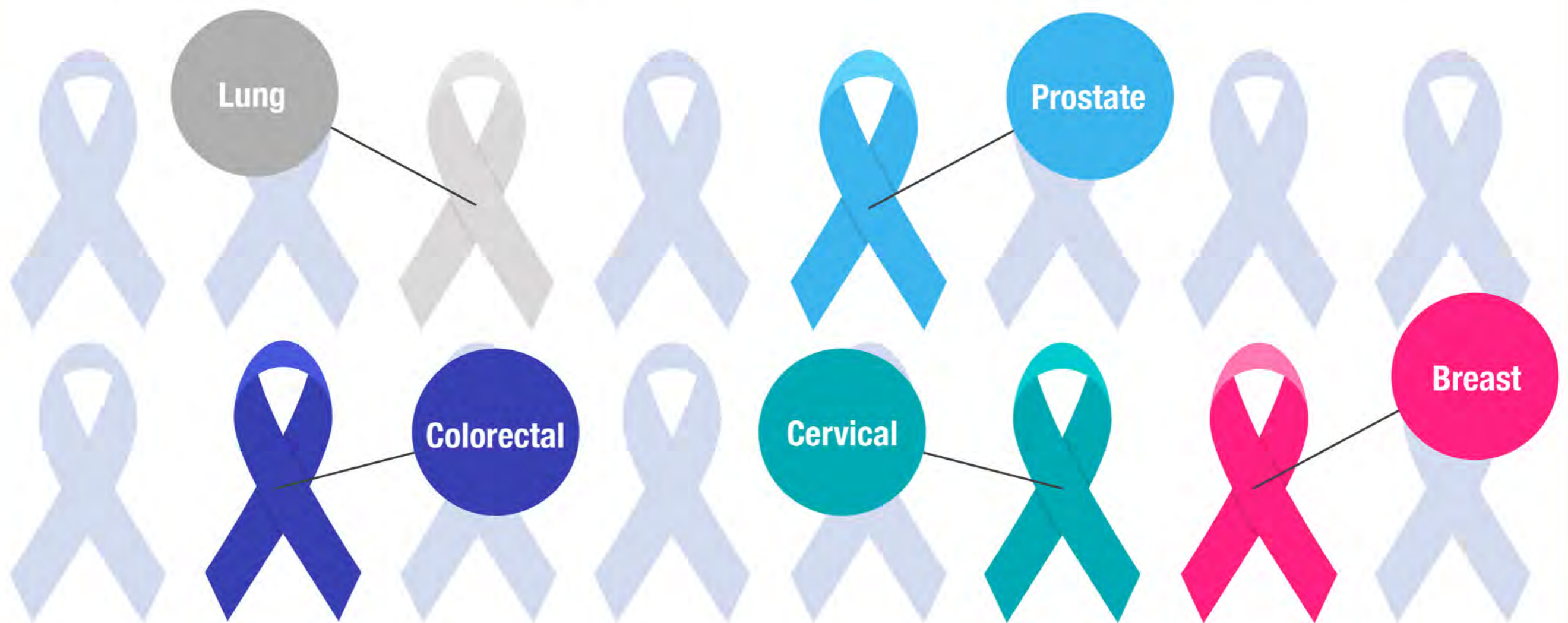
**Finding cancer early provides the best chance for effective treatment and a better quality of life for patients and their loved ones.**



**When cancer is detected early,  
9 in 10 patients will live  
5 years or longer. <sup>1</sup>**

# UNMET NEEDS IN CANCER SCREENING

Routine cancer screening tests covered by Medicare detect **only 5** (of the many) types of cancer:



**There are no routine screenings for other cancers covered by Medicare.**

# Often, screening rates are lower and mortality rates are higher for:



People in racial and ethnic minority groups



People in the LGBTQ+ community



People in rural areas

# WHAT ARE MULTI-CANCER EARLY DETECTION (MCED) TESTS?



MCED tests were developed to **catch more cancers** in early, more treatable stages.

They complement existing screenings and can identify **many cancer types at a time**.

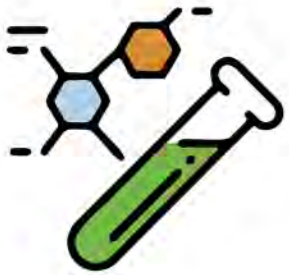
# FAST FACTS ABOUT MCEDs



**Currently available as blood-based screening tests**



**Not currently covered by health insurance plans**



**Are not yet approved by the FDA**



**Use genomic science and machine learning to transform detection**



**Published data indicate that some of these tests can screen for many cancers at the same time, including some rare cancers <sup>2</sup>**



**Created by multiple companies and being studied at the top cancer research institutions in the U.S.**

# LEGISLATION AT A GLANCE



**Without legislation, Medicare beneficiaries may have to wait years until the U.S. Preventive Services Task Force (USPSTF) recommends this test as an “A” or “B,” which would require Medicare coverage.**



**Ample precedent exists for legislative action.**



**400+ organizations support the Medicare Multi-Cancer Early Detection Screening Coverage Act to improve access for older Americans to MCED tests.**



**The legislation will create a pathway at Centers for Medicare & Medicaid Services to determine Medicare’s coverage of these tests only after the tests have been approved by the U.S. Food and Drug Administration.**

**The mission of the Prevent Cancer Foundation is saving lives across all populations through cancer prevention and early detection.**



**For more information on the Prevent Cancer Foundation's ongoing work on multi-cancer early detection, please visit: [preventcancer.org/early](https://preventcancer.org/early)**

**1 Noone AM, Howlader N, Krapcho M, Miller D, Brest A, Yu M, Ruhl J, Tatalovich Z, Mariotto A, Lewis DR, Chen HS, Feuer EJ, Cronin KA (eds). SEER Cancer Statistics Review, 1975-2015, National Cancer Institute. Bethesda, MD, [https://seer.cancer.gov/csr/1975\\_2015/](https://seer.cancer.gov/csr/1975_2015/), based on November 2017 SEER data submission, posted to the SEER web site, April 2018.**

**2 Several studies are available at <https://www.preventcancer.org/multi-cancer-early-detection/overview/>**